



SMARTSENS

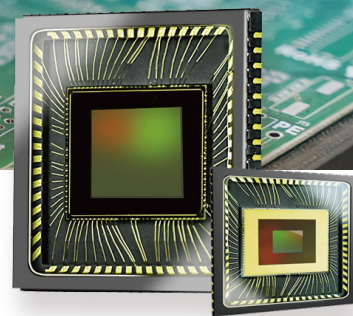
CMOS图像传感器

CMOS IMAGE SENSOR

SCI30GS 产品单页

SCI30GS Product Flyer

- 基于背照式工艺的全局快门技术
Global Shutter based on BSI technology
- 致力于工业机器视觉和高端AI应用
Dedicated to industrial machine vision & high-end AI applications



公司简介 | Company Profile

思特威(上海) 电子科技股份有限公司 (Smartsens Technology) 是一家从事CMOS 图像传感器芯片产品研发、设计和销售的高新技术企业,总部设立于中国上海,在多个城市及国家设有研发中心。

自成立以来,思特威始终专注于高端成像技术的创新与研发,凭借性能优势在同质化竞争中脱颖而出,得到了更多客户的认可和青睐。作为致力于提供多场景应用、全性能覆盖的CMOS 图像传感器产品企业,公司产品已覆盖了安防监控、机器视觉、智能车载电子等多场景应用领域的全性能需求。

公司持续拓展产品的应用领域,以创新的图像传感器技术助推各产业智能化转型和发展,助力集成电路产业国产化替代。

SmartSens Technology (Shanghai) Co., Ltd. is a high-performance CMOS image sensor (CIS) chip design company. It is headquartered in Shanghai and has research centers in many cities around the world.

SmartSens has been dedicated to pushing forward the frontier of imaging technology and growing in popularity among customers since it was established. SmartSens' CMOS image sensors provide advanced imaging solutions for a broad range of areas such as surveillance, machine vision, automotive and cellphone cameras.

SmartSens is committed to continuous innovation of products and fueling growth in numerous industries by delivering a more comprehensive portfolio of image sensors.

规格说明 | Specifications

项目 Item	参数 Parameters
Resolution	1.3MP
Pixel Array	1288H x 1032V
Pixel Size	4.0µm x 4.0µm
Optical Format	1/2.7" (6.56mm)
Max Frame Rate	1280H x 1024V @240fps
Output Interface	10/8 bit DVP
	10/8 bit 1/2/4 lane MIPI
	10/8 bit 1/2/4 lane LVDS
Output Format	RAW/MONO/RGB
CRA	0°
Sensitivity	8,000mV/Lux-s
Dynamic Range	Linear Mode 60dB
SNR	40dB
Operation Temperature Range	-30°C to +85°C
Best IQ Temperature	-20°C to +60°C
Power Supply	Analog = 3.3V
	Digital = 1.5V
	I/O = 1.8V~3.3V
Package	64 pin CLCC
Package Size	13mm x 13mm

产品特性 | Features

- 基于背照式工艺的全局快门技术
Global Shutter Based on BSI Pixel Technology
- 240fps 高帧率
High Frame Rate @240fps
- 出色的快门效率
Excellent Shutter Efficiency
- 支持多种接口 (DVP/MIPI/LVDS)
Multiple Interfaces (DVP/MIPI/LVDS)

应用场景 | Applications

- 机器视觉系统
Machine Vision Systems
- 智能零售系统
Intelligent Retail Systems
- 智能交通系统
ITS Systems
- 物流读码器
FA/Logistics Bar Code Readers
- 物联网摄像头
IoT Cameras
- 物流机器人
Logistics Robots



WeChat



LinkedIn

Website www.smartsensotech.com
E-mail CS@smartsensotech.com

■ 上海办公室
上海市闵行区田林路889号绿洲四期8号楼
Building 8, Shanghai Business Park IV, No. 889 Tianlin Road,
Minhang District, Shanghai
Tel: 021-6485-3570

■ 深圳办公室
深圳市龙岗区坂田街道雅宝路1号 星河WORLD B座2801室
B2801, Building B, Galaxy WORLD, No.1 Yabao Road,
Bantian Street, Longgang District, Shenzhen
Tel: 0755-2373-9713

■ 北京办公室
北京市经济技术开发区荣华南路2号大族广场T6座2201室
Room 2201, Building T6, Dazhu Plaza, No.2, South Ronghua
Road, Economic-Technological Development Area, Beijing
Tel: 010-6786-3626

■ 香港办公室
香港观塘鸿图道21号讯科中心10楼F室
RM F, 10/F, INFOTECH CENTRE, 21 HUNG TO RD

■ 美国 (圣何塞)
加利福尼亚州圣何塞市史蒂文森克里克大道4340号280室
4340 Stevens Creek Blvd, Suite 280, San Jose CA95129
Tel: +1 408 981 6626