



SMARTSENS

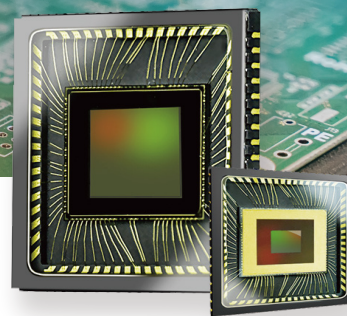
CMOS图像传感器

CMOS IMAGE SENSOR

SC031GS 产品单页

SC031GS Product Flyer

- 基于背照式工艺的全局快门技术
Global Shutter based on BSI technology
- 主流AI应用最具性价比的VGA CIS
The most cost-effective VGA CIS for common AI applications



公司简介 | Company Profile

思特威(上海)电子科技股份有限公司(SmartSens Technology)是一家从事CMOS图像传感器芯片产品研发、设计和销售的高新技术企业,总部设立于中国上海,在多个城市及国家设有研发中心。

自成立以来,思特威始终专注于高端成像技术的创新与研发,凭借自身性能优势得到了众多客户的认可和青睐。作为致力于提供多场景应用、全性能覆盖的CMOS图像传感器产品企业,公司产品已覆盖了安防监控、机器视觉、智能车载电子、智能手机等多场景应用领域的全性能需求。

思特威将秉持“以前沿智能成像技术,让人们更好地看到和认知世界”的愿景,以客户需求为核心动力,持续推动前沿成像技术升级,拓展产品应用领域,与合作伙伴一起助推未来智能影像技术的深化发展。

SmartSens Technology (Shanghai) Co., Ltd. is a high-performance CMOS image sensor (CIS) chip design company. It is headquartered in Shanghai and has research centers in many cities around the world.

SmartSens has been dedicated to pushing forward the frontier of imaging technology and growing in popularity among customers since it was established. SmartSens' CMOS image sensors provide advanced imaging solutions for a broad range of areas such as surveillance, machine vision, automotive and cellphone cameras.

SmartSens is committed to continuous innovation of products and fueling growth in numerous industries by delivering a more comprehensive portfolio of image sensors.

规格说明 | Specifications

项目 Item	参数 Parameters
Resolution	0.3MP
Pixel Array	640H x 480V
Pixel Size	3.75µm x 3.75µm
Optical Format	1/6"
Max Frame Rate	Non-HDR:
	10bit 180fps
	HDR:
Output Interface	10bit 90fps
	12/10/8 bit DVP
	12/10/8 bit 1/2 lane MIPI
Output Format	12/10/8 bit 1/2 lane LVDS
	RAW MONO
CRA	33°
Sensitivity	6,500mV/Lux-s
Dynamic Range	HDR Mode up to 100dB
	Linear Mode 56dB
SNR	38dB
Operation Temperature Range	-30°C to +85°C
Best IQ Temperature	-20°C to +60°C
Power Supply	Analog = 2.8V
	Digital = 1.5V
	I/O = 1.8V
Package	32 pin CSP
Package Size	3.70mm x 3.07mm

产品特性 | Features

- **基于背照式工艺的全局快门技术**
Global Shutter Based on BSI Pixel Technology
- **高灵敏度的3.75µm背照式全局快门像素**
High Sensitivity with 3.75µm BSI GS Pixel
- **180fps 高帧率**
High Frame Rate @180fps
- **支持单帧HDR**
Single-Frame HDR
- **支持多种接口 (DVP/MIPI/LVDS)**
Multiple Interfaces (DVP/MIPI/LVDS)

应用场景 | Applications

- **扫码器**
Code Scanners
- **扫地机器人**
Robotic Vacuums
- **无人机避障系统**
Drone Object Avoidance Systems
- **VR/AR/MR系统**
VR/AR/MR Systems
- **手势识别系统**
Gesture Recognition Systems



WeChat



LinkedIn

■ **上海办公室**
上海市闵行区田林路889号绿洲四期8号楼
Building 8, Shanghai Business Park IV, No. 889 Tianlin Road,
Minhang District, Shanghai
Tel: 021-6485-3570

■ **深圳办公室**
深圳市龙岗区坂田街道雅宝路1号 星河WORLD B座2801室
B2801, Building B, Galaxy WORLD, No.1 Yabao Road,
Bantian Street, Longgang District, Shenzhen
Tel: 0755-2373-9713

■ **北京办公室**
北京市经济技术开发区荣华南路2号大族广场T6座2201室
Room 2201, Building T6, Dazhu Plaza, No.2, South Ronghua
Road, Economic-Technological Development Area, Beijing
Tel: 010-6786-3626

■ **香港办公室**
香港观塘鸿图道21号讯科中心10楼F室
RM F, 10/F, INFOTECH CENTRE, 21 HUNG TO RD

■ **美国 (圣何塞)**
加利福尼亚州圣何塞市史蒂文森克里克大道4340号280室
4340 Stevens Creek Blvd, Suite 280, San Jose CA95129
Tel: +1 408 981 6626