

BOMAR[®]

Operating Instructions for Band Saw

STG 330 GA



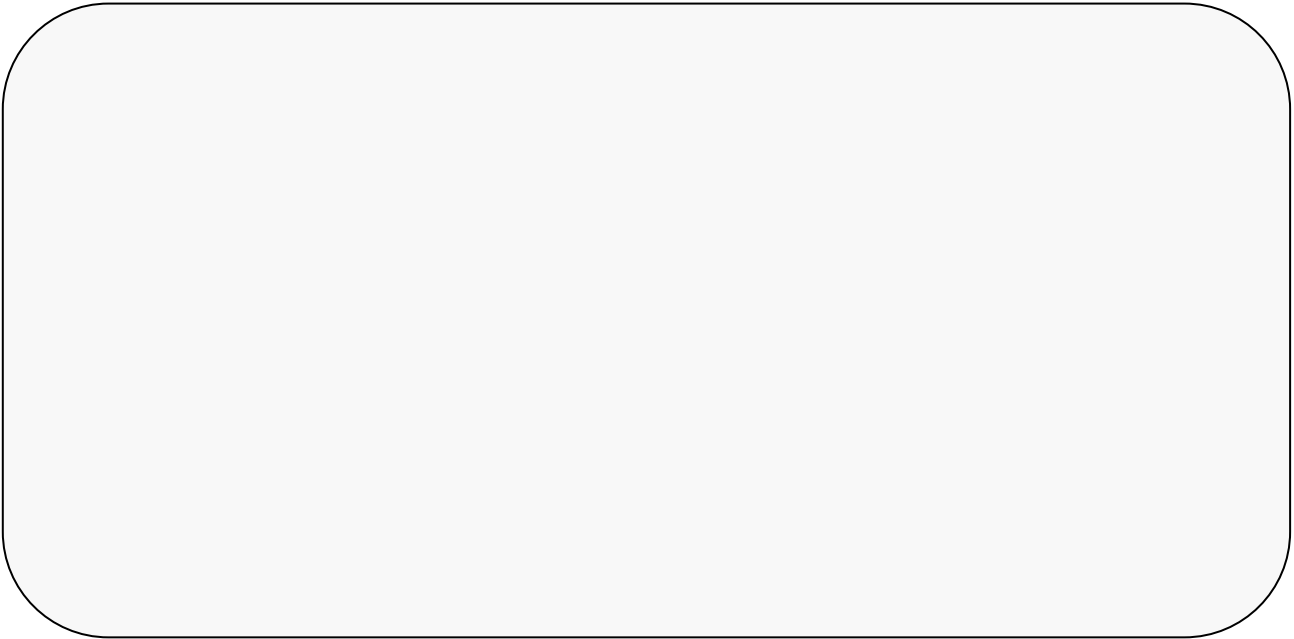
Before transporting and using the machine please read the instructions thoroughly!

Serial number:



Service and Information

In case of technical difficulties or spare parts order, please contact your dealer:



Or contact Bomar, spol. s r.o. directly:

BOMAR, spol. s r.o.

*Lazaretní 7
61500 Brno
CZECH REPUBLIC*

Telephone: +420 – 545 152 336

Telephone: +420 – 545 152 338

Fax: +420 – 545 152 514

e-mail: info@bomar.cz

WWW: http://www.bomar.cz

We are available Mondays to Fridays from 7⁰⁰ to 16⁰⁰.

Version 1.05 / June 2003

BOMAR, spol. s r.o. © - Errors and changes are excepted

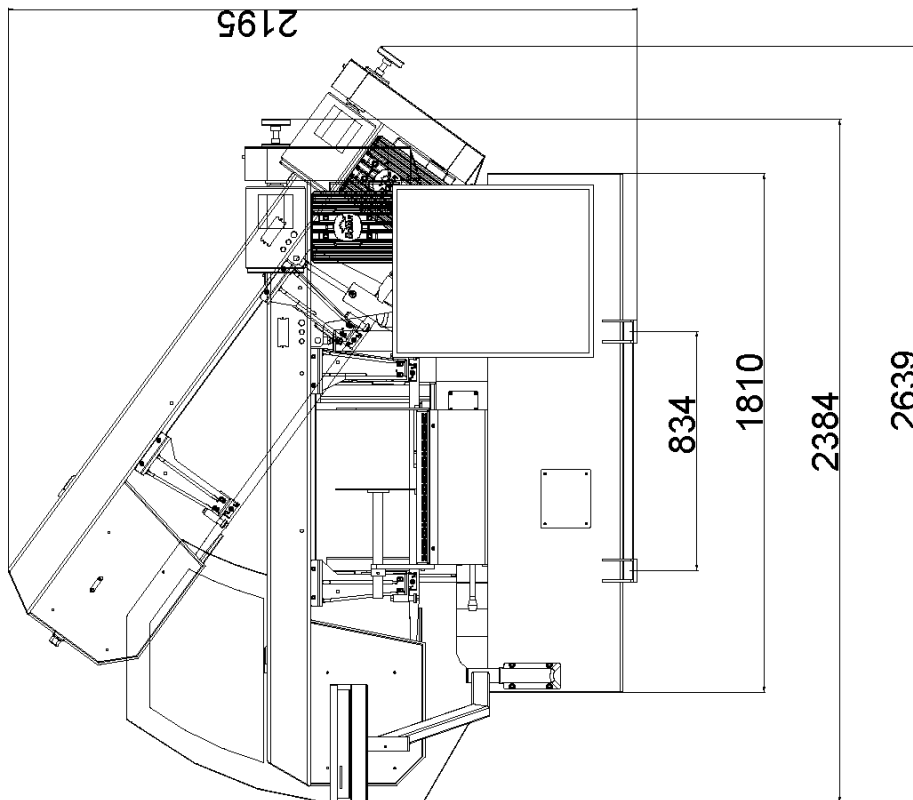
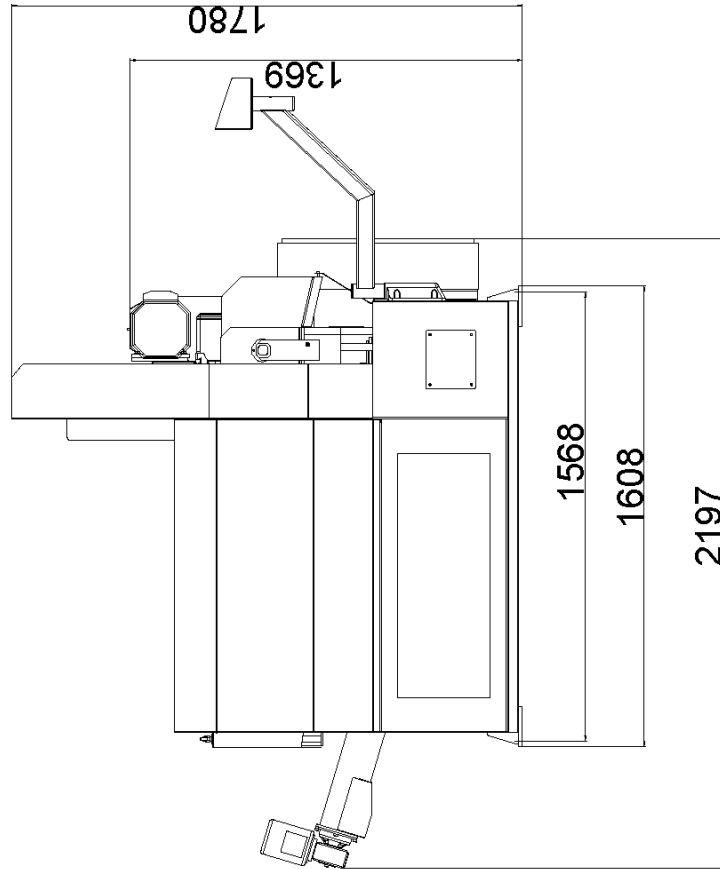
Content

1. INTRODUCTION	4
2. BAND SAW USING.....	4
3. TECHNICAL DATA	5
4. SAFETY NOTES	6
4.1. GENERAL	6
4.2. PROTECTIVE SUIT AND PERSONAL SAFETY	6
4.3. SAFETY NOTES FOR MACHINE OPERATOR	7
4.4. SAFETY NOTES FOR THE SERVICING AND REPAIRS	8
4.5. SAFETY MACHINE ACCESSORIES	8
5. TRANSPORTATION AND STOCKING	10
5.1. CONDITIONS FOR TRANSPORTATION AND STOCKING	10
5.2. SAFETY NOTES.....	10
5.3. TRANSPORT AND STOCKING PREPARATIONS	10
5.4. TRANSPORT AND STOCKING	11
6. ACTIVATION.....	12
6.1. MACHINE WORKING CONDITIONS	12
6.2. MACHINE INSTALLING AND LEVELLING.....	12
6.3. ELECTRICAL CONNECTION	13
6.4. FILLING OF THE COOLING SYSTEM	14
6.5. CHECK MACHINE FUNCTIONS	15
7. MATERIAL INSERTION.....	16
7.1. SAFETY NOTES.....	16
7.2. MATERIAL INSERTION.....	16
8. MACHINE OPERATION.....	17
8.1. SAFETY NOTES FOR MACHINE OPERATION	17
8.2. MAIN CONTROL PANEL - DESCRIPTION	18
8.3. SETTING OF ANGULAR CUT.....	20
8.4. OPTIMAL ADJUSTING OF THE GUIDE CUBES SPAN	20
8.5. CUTTING SPEED ADJUSTMENT	21
8.6. ADJUSTING THE AUTOMATIC DOWNFEED REGULATOR.....	22
8.7. SET MODE.....	23
8.8. SEMI-AUTOMATIC MODE.....	25
8.9. BREAKING OF THE SEMI – AUTOMATIC CYCLE.....	26
8.10. AUTOMATIC MODE.....	27
8.11. BREAKING OF THE AUTOMATIC CYCLE	29
8.12. SHUTTING THE MACHINE DOWN	29
9. SELECTION AND REPLACEMENT OF THE SAW BAND	30
9.1. SAFETY NOTES	30
9.2. SAW BAND SELECTION	30
9.3. SAW BAND RUNNING - IN	32
9.4. SAW BAND DISMANTLING.....	33
9.5. SAW BAND INSTALLATION.....	34

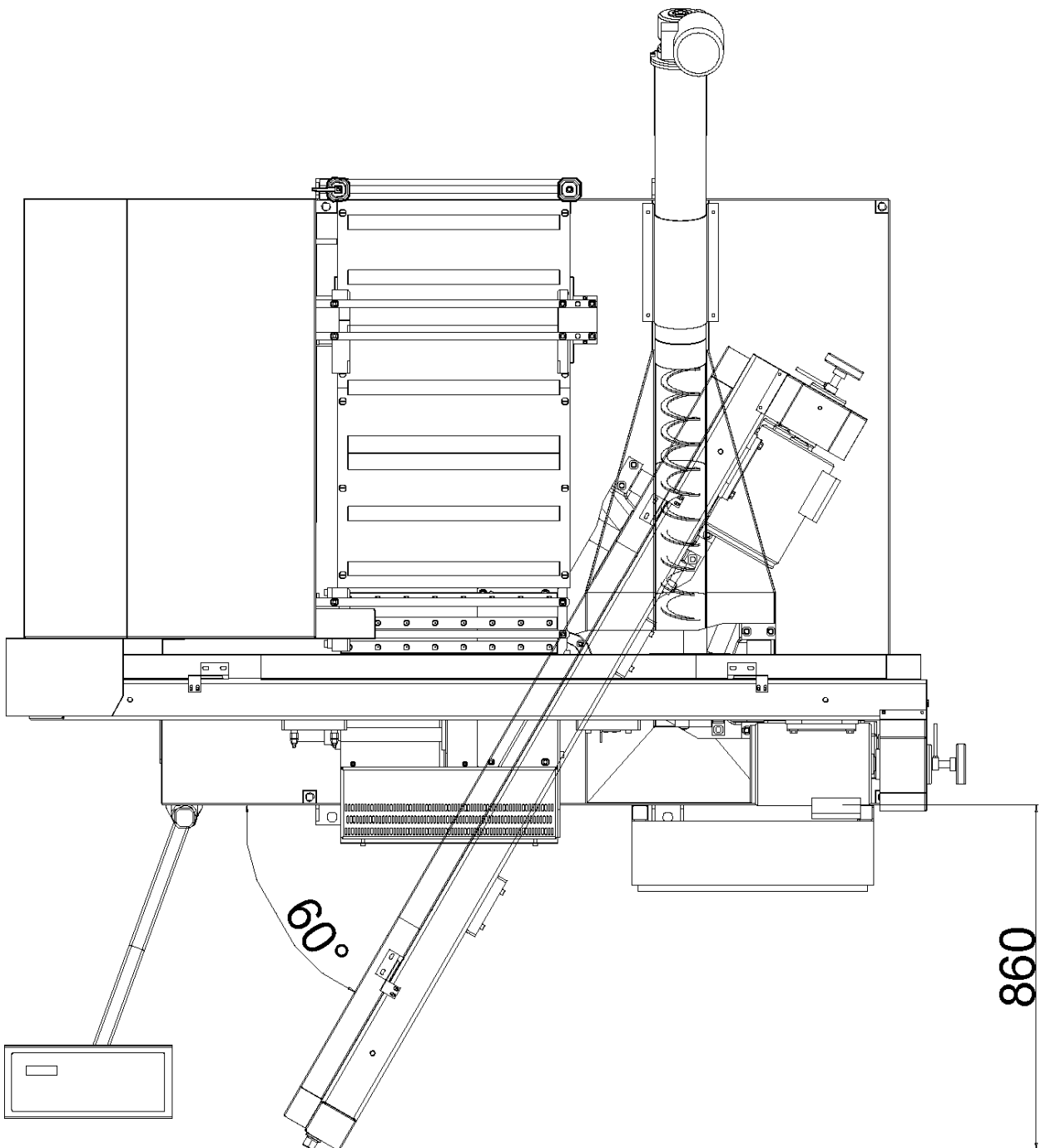
9.6.	SAW BAND STRETCHING AND INSPECTION.....	35
10.	COOLING AGENTS AND CHIPS DISPOSAL	36
10.1.	SAFETY NOTES	36
10.2.	COOLING LIQUID PREPARATION	36
10.3.	COOLANT DEVICE INSPECTION.....	37
10.4.	CHIPS DISPOSAL	38
11.	GEARBOX AND HYDRAULIC OILS.....	39
	GEARBOX OILS.....	39
	HYDRAULIC OILS	39
	SERVICING AND ADJUSTMENT	40
I.	GUIDING CUBES ADJUSTMENT.....	40
II.	HARD METAL GUIDES ADJUSTMENT	40
III.	SAW BAND RUN ADJUSTMENT ON STRETCHING WHEEL	41
IV.	BRUSH ADJUSTMENT	42
V.	ADJUSTING OF THE LIMIT SWITCH OF THE SAW BAND STRETCHING	43
VI.	SAW FRAME LOWER POSITION STOP ADJUSTMENT	43
VII.	LIMIT SWITCH ADJUSTMENT OF THE SAW FRAME LOWER POSITION	43
VIII.	ADJUSTMENT OF THE SECURING CUBE OF THE TURNING LEVER	44
IX.	PRESSURE SWITCH ADJUSTMENT	45
X.	PRESSURE ADJUSTMENT OF THE HYDRAULIC SYSTEM	46
XI.	ADJUSTMENT OF THE REGULATING PRESSURE TO THE CUT	47
	WORN PIECES REPLACEMENT	48
XII.	HARD METAL GUIDES REPLACEMENT	48
XIII.	PUSHING BEARING REPLACEMENT	50
XIV.	FIXED BEARING REPLACEMENT OF THE SAW BAND GUIDING	52
XV.	SAW BAND GUIDING PULLEYS REPLACEMENT	53
XVI.	BRUSH REPLACEMENT	55
XVII.	VARIATOR BAND REPLACEMENT.....	56
XVIII.	STRETCHING WHEEL REPLACEMENT	58
XIX.	DRIVING WHEEL REPLACEMENT.....	60
XX.	COOLING PUMP REPLACEMENT	61
	INSTALLATION DIAGRAMS	62
	INSTALLATION DIAGRAM I	62
	INSTALLATION DIAGRAM II	63
	WIRING DIAGRAMS	64
	WIRING DIAGRAM I	64
	WIRING DIAGRAM II	65
	WIRING DIAGRAM III	66
	WIRING DIAGRAM IV	67
	WIRING DIAGRAM V	68
	WIRING DIAGRAM VI	69
	WIRING DIAGRAM VII	70
	WIRING DIAGRAM VIII	71
	WIRING DIAGRAM IX	72
	WIRING DIAGRAM X	73
	WIRING DIAGRAM XI	74
	WIRING DIAGRAM XII	75
	WIRING DIAGRAM XIII	76
	WIRING DIAGRAM XIV.....	77
	HYDRAULIC DIAGRAM.....	78

HYDRAULIC DIAGRAM	78
DRAWING ASSEMBLIES FOR SPARE PARTS ORDER.....	80
TURNING CONSOLE	80
SAW FRAME	82
STRETCHING.....	84
LIFTING CYLINDER	86
SAW BAND GUIDING	88
RIGHT GUIDING CUBE	90
LEFT GUIDING CUBE	92
BRUSH.....	94
BRUSH SHEAVE	96
FEEDING VICE	98
ROLLER CONVEYOR.....	100
MAIN VICE.....	102
CLAMPING CYLINDER	104
CYLINDER OF THE FEEDER.....	106
TROUBLESHOOTING TABLE	109
SPECIAL ACCESSORY.....	112
BUNDLING SYSTEM.....	112
VICE PRESSURE REGULATION	112
FREQUENCY CONVERTER	112
MICRONISER	112
TENZOMAT	113
ROLLER CONVEYORS AND ACCESSORIES	114
ROLLER CONVEYORS.....	114
ROLLER CONVEYORS PREPARED FOR POWERING	114
POWER AND CONTROL UNITS FOR POWERED CONVEYORS	115
CONNECTION PARTS.....	116
COVERS	116
ACCESSORIES OF ROLLER CONVEYORS.....	117
CONNECTION SCHEMA OF ROLLER CONVEYOR WITH BAND SAW	118
DECLARATION OF CONFORMITY.....	121

Installation diagrams

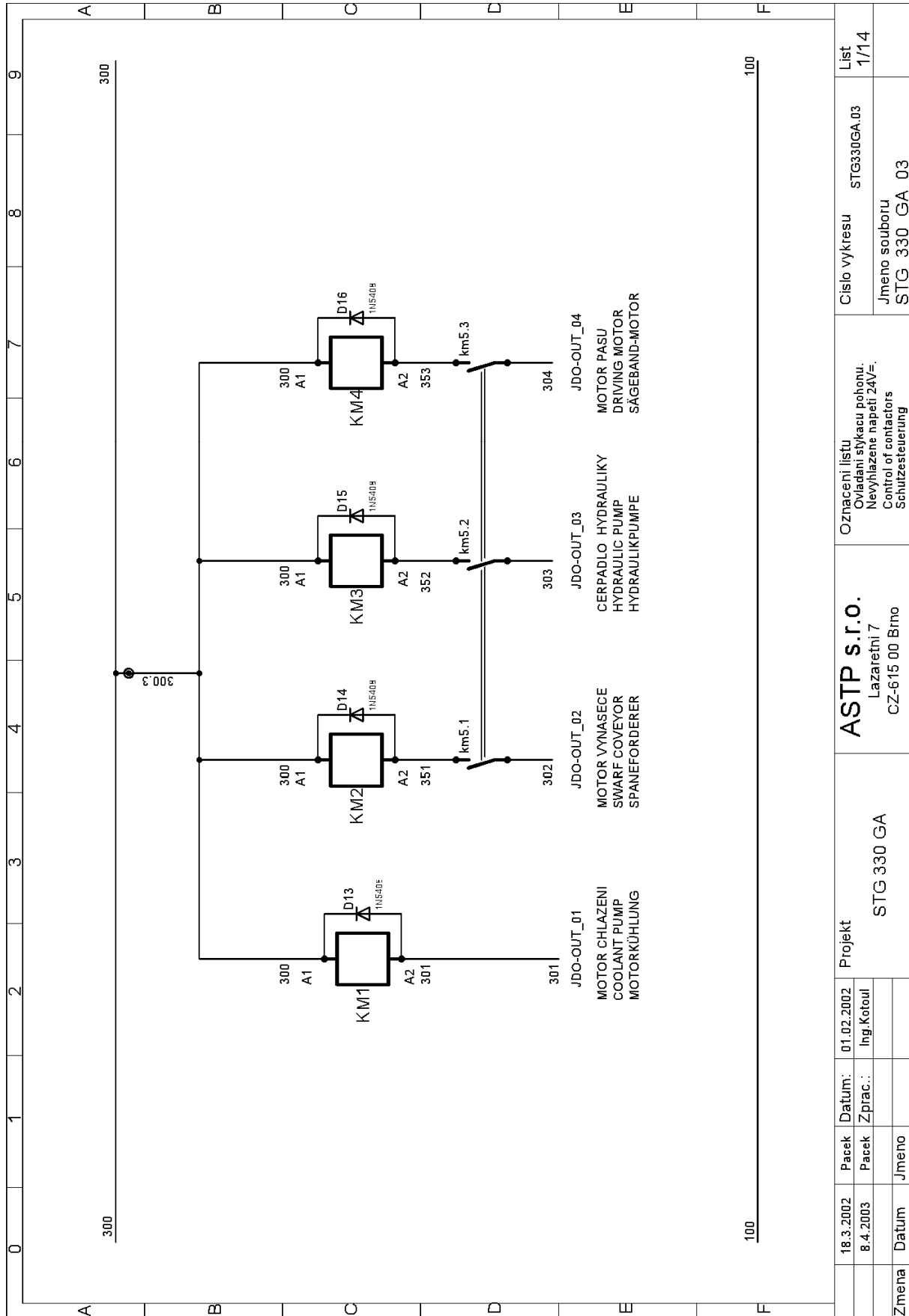


Installation diagram I



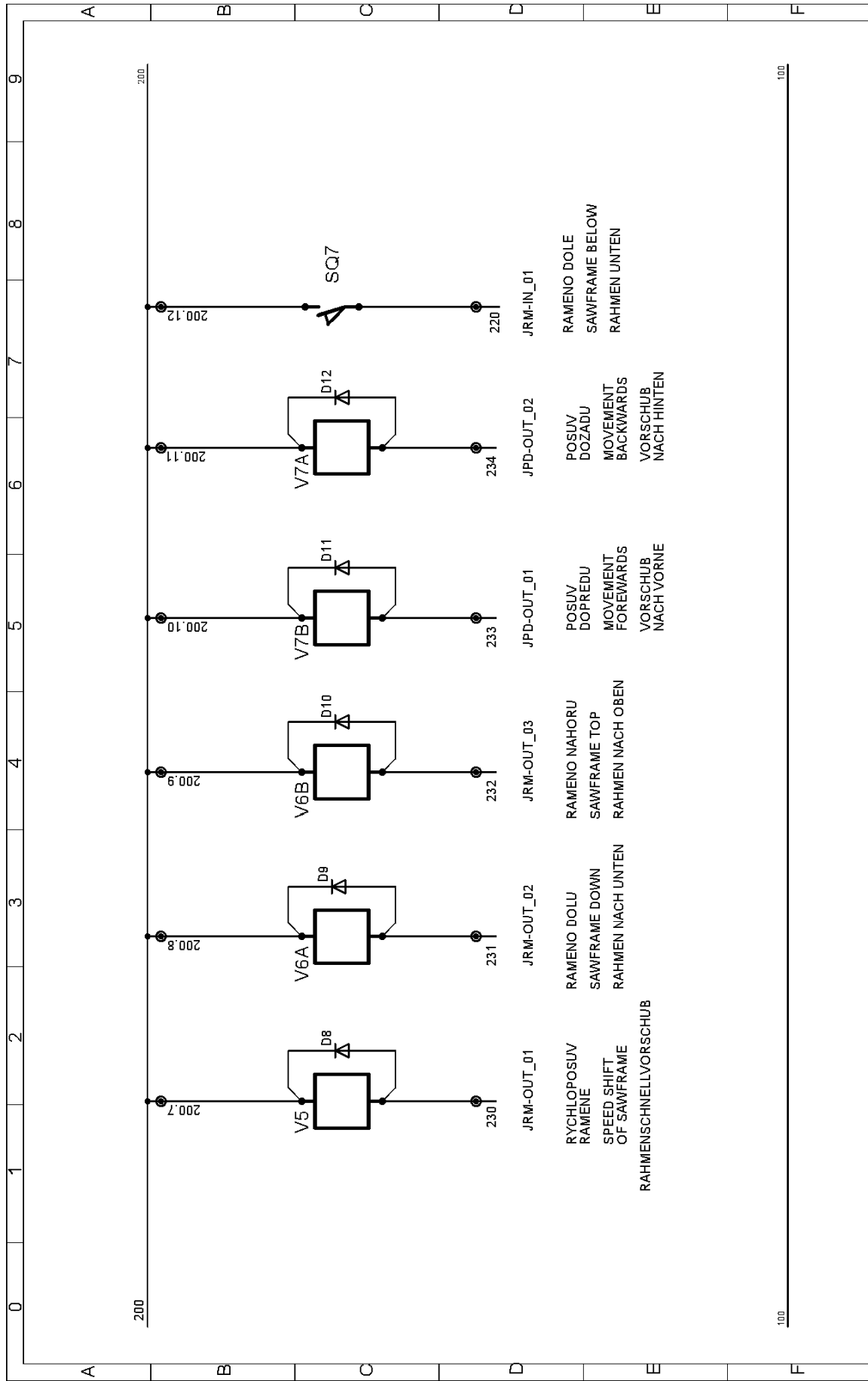
Installation diagram II

Wiring diagrams



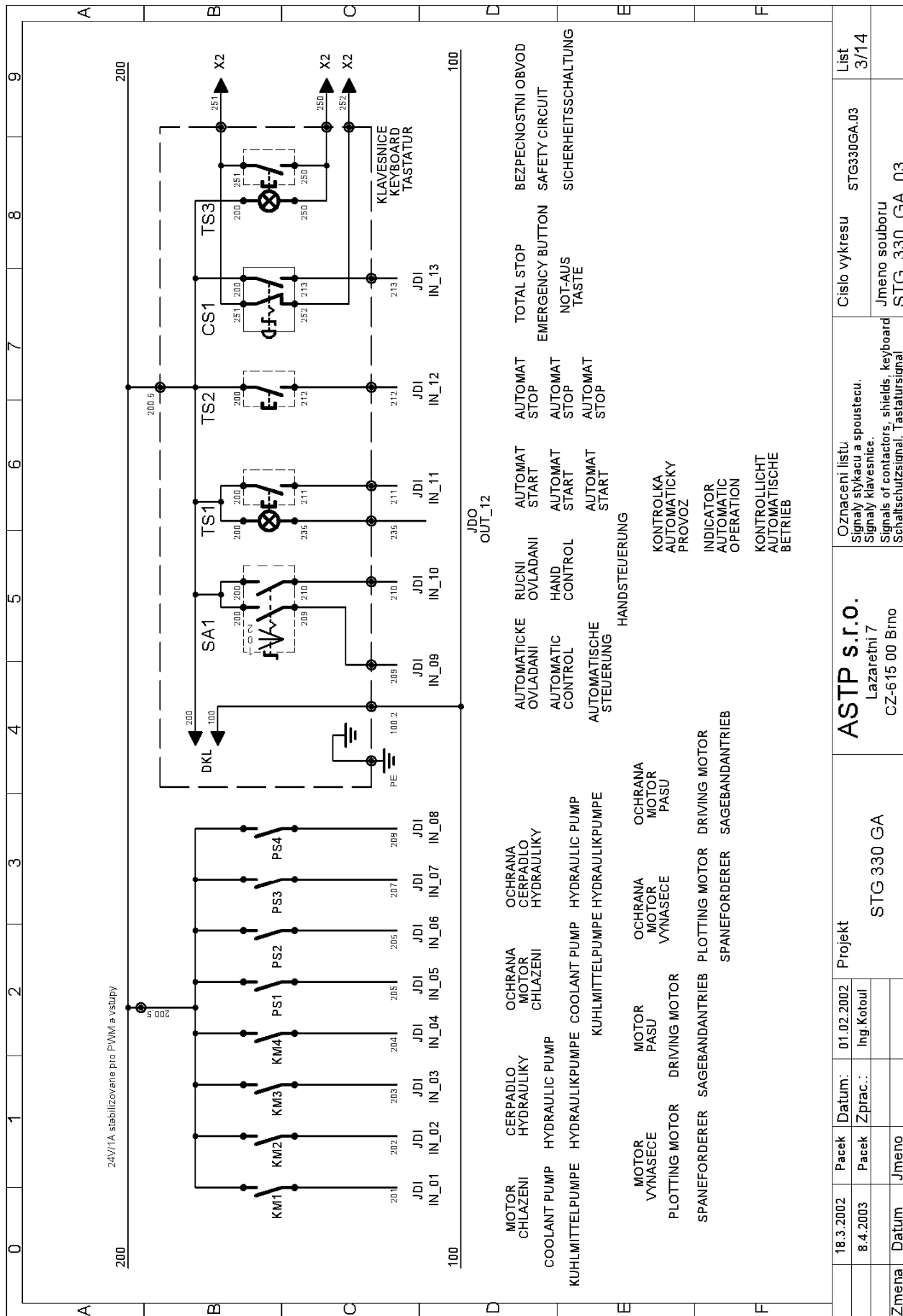
Wiring diagram I

18.3.2002	Pacek	Datum:	01.02.2002	Projekt	STG 330 GA	ASTP s.r.o. Lazaretní 7 CZ-615 00 Brno	Oznaceni listu Ovladani stykacu pohonu. Nevyhlazene napeti 24V±. Control of contactors Schutzsteuerung	Cislo vykresu STG330GA.03	List 1/14
8.4.2003	Pacek	Zprac.:	Ing. Kotoul	Jmeno souboru STG_330_GA_03					
Zmena	Datum	Jmeno							

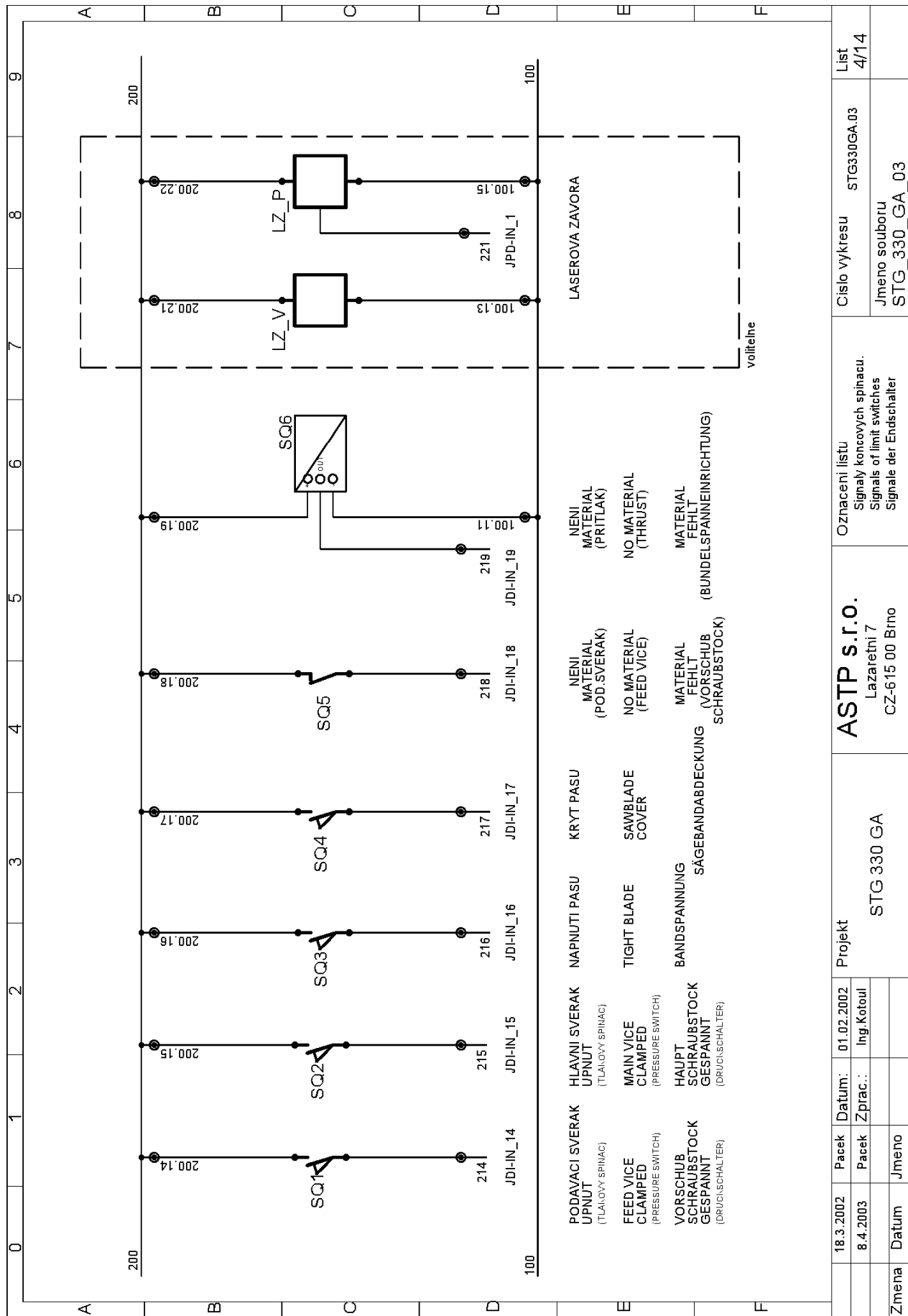


18.3.2002	Pacek	Datum:	01.02.2002	Projekt	STG 330 GA	ASTP s.r.o. Lazaretní 7 CZ-615 00 Brno	Oznaceni listu Napajeni proporcionalnich ventilu ramene a podavace.Stabil. 20V/- Feeding of sawframe valves Versorgung der Proportionalventile	Cislo vykresu STG330GA.03	List 2/14
8.4.2003	Pacek	Zprac.:	Ing.Kotoul		Jmeno souboru STG_330_GA_03				
Zmena	Datum	Jmeno							

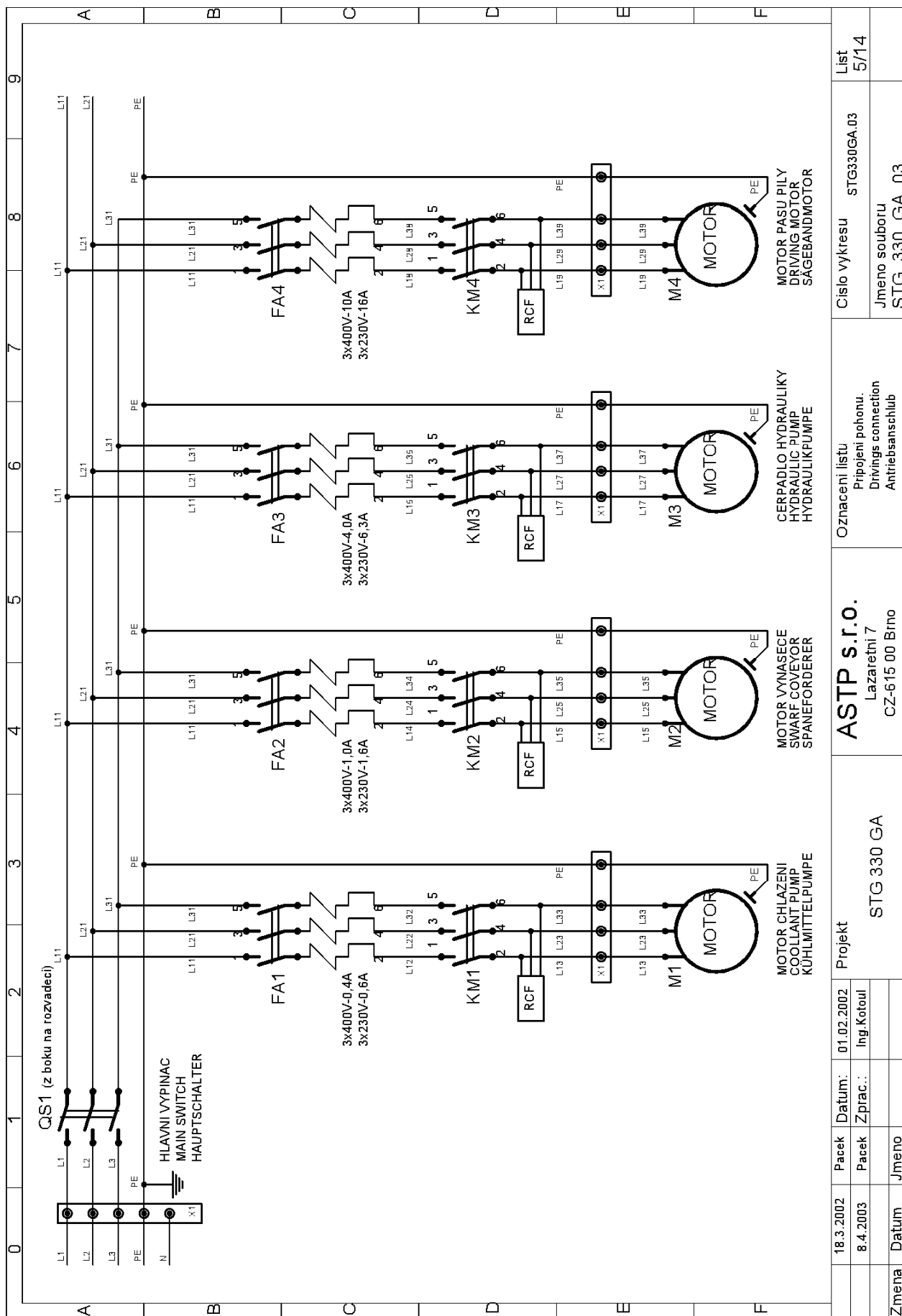
Wiring diagram II



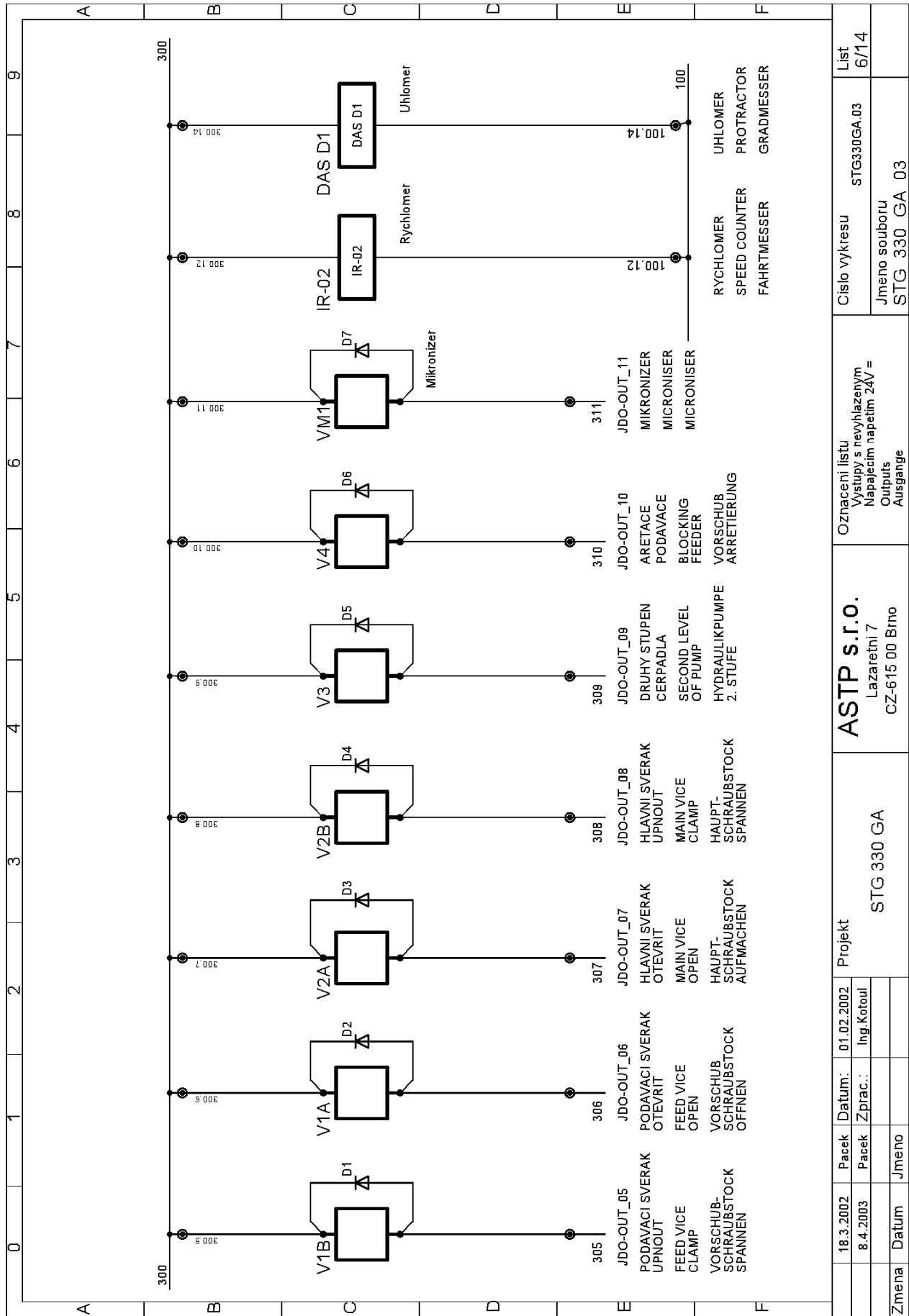
Wiring diagram III



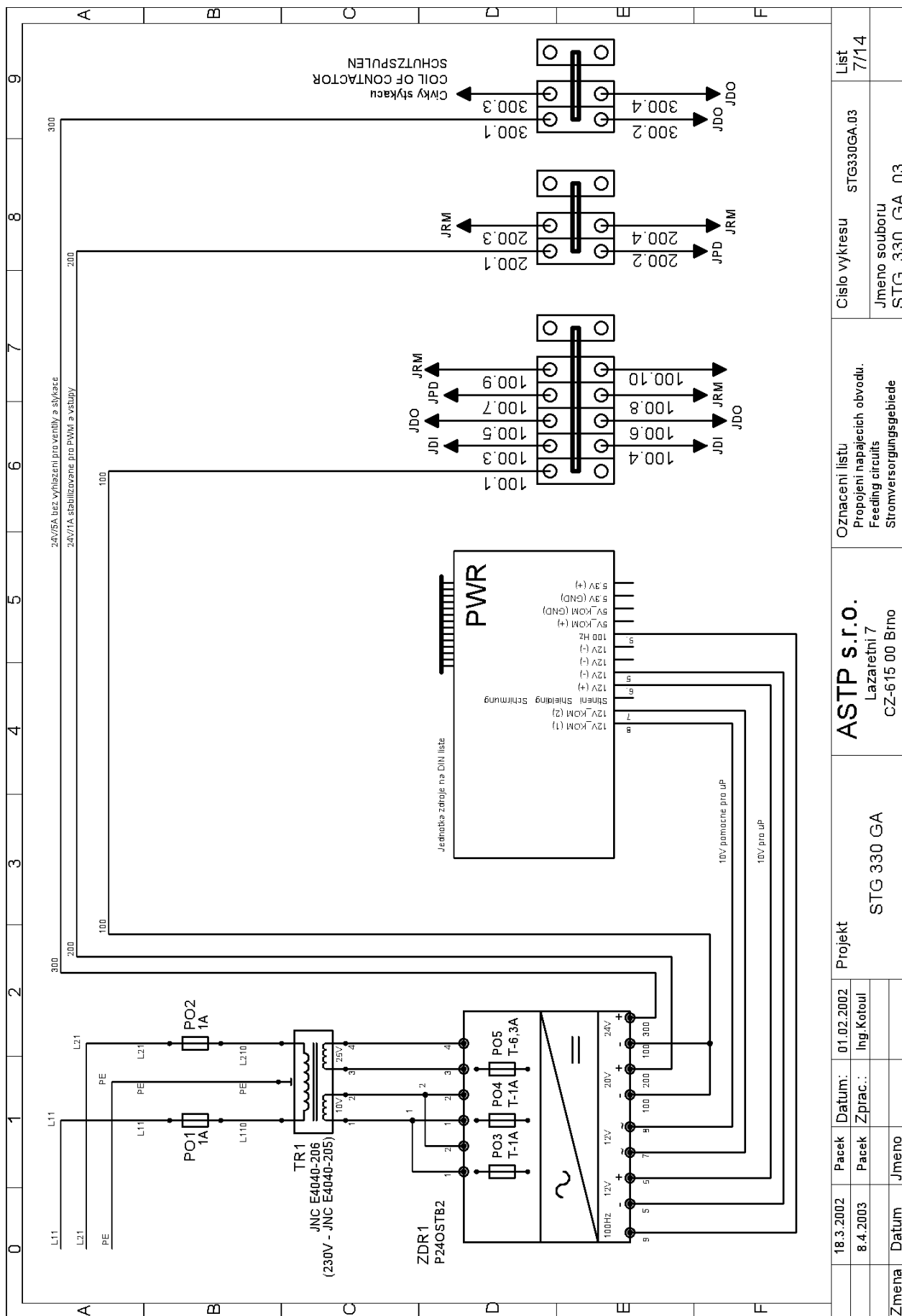
Wiring diagram IV



Zmena	Datum	Jmeno	Projekt STG 330 GA	ASTP s.r.o. Lazaretni 7 CZ-615 00 Brno	Oznaceni listu Pripojeni pohonu. Drivings connection Antriebsanschluß	Cislo vykresu STG330GA.03	List
	Datum	Jmeno					Jmeno souboru STG 330 GA 03

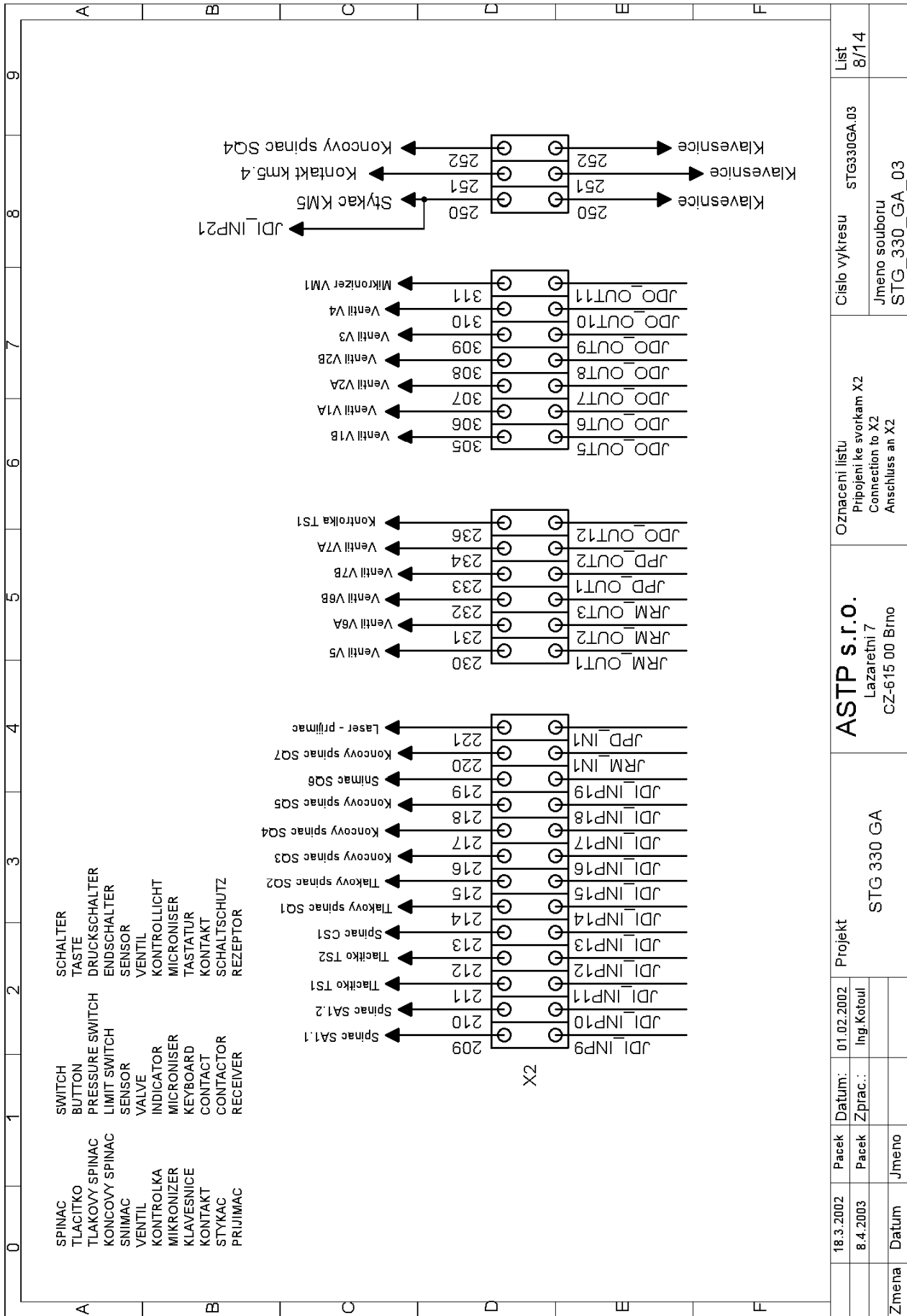


Wiring diagram VI

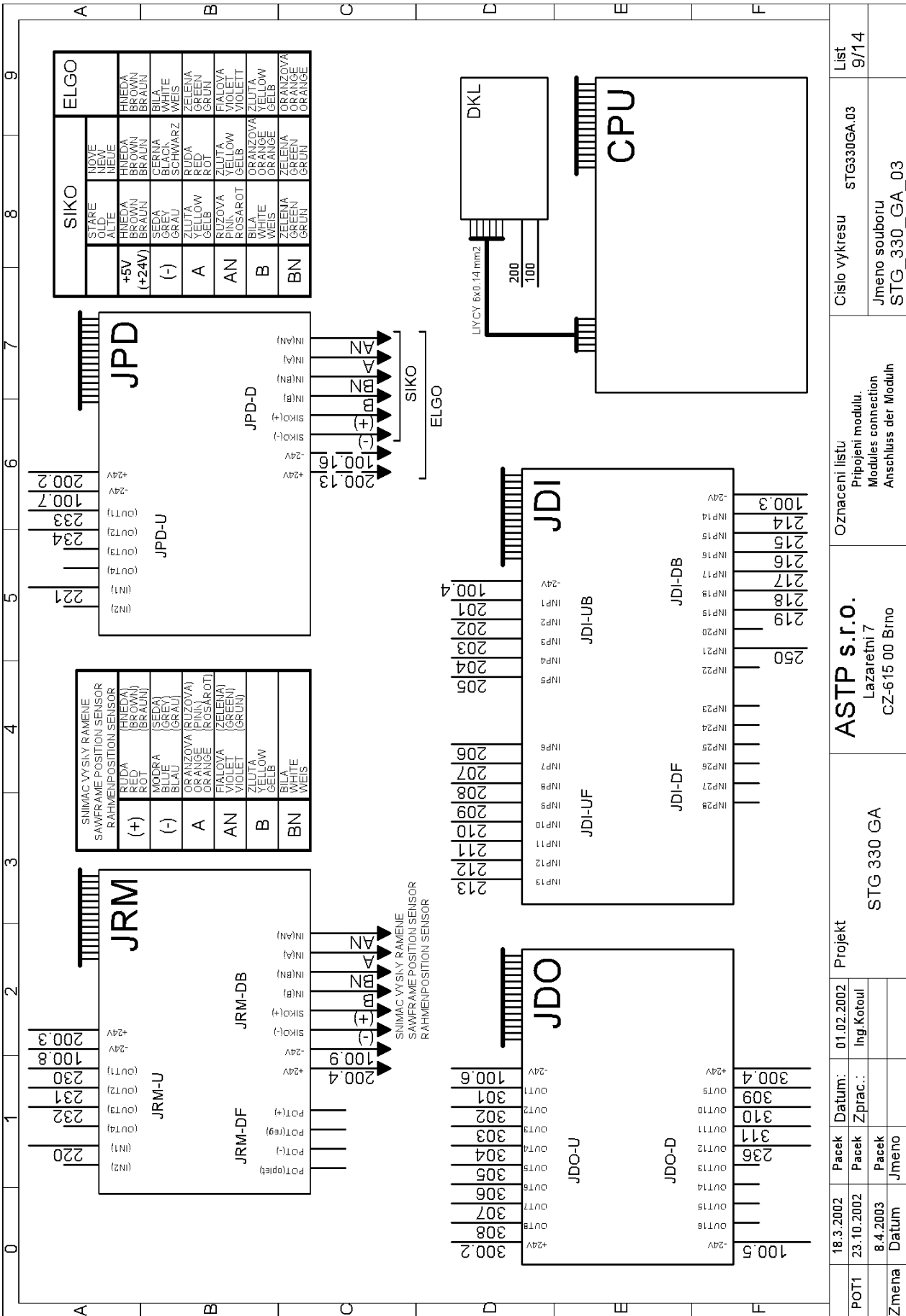


Wiring diagram VII

18.3.2002	Pacek Datum:	01.02.2002	Projekt	ASTP s.r.o.	Označení listu	STG330GA.03	Číslo vykresu	7/14
8.4.2003	Pacek Zprac.:	Ing.Kotoul	STG 330 GA	Lazaretní 7	Propojení napájecích obvodů.			
	Jmeno Datum			CZ-615 00 Brno	Feeding circuits			
					Stromversorgungsgebiete			
					Jmeno souboru	STG 330 GA 03		

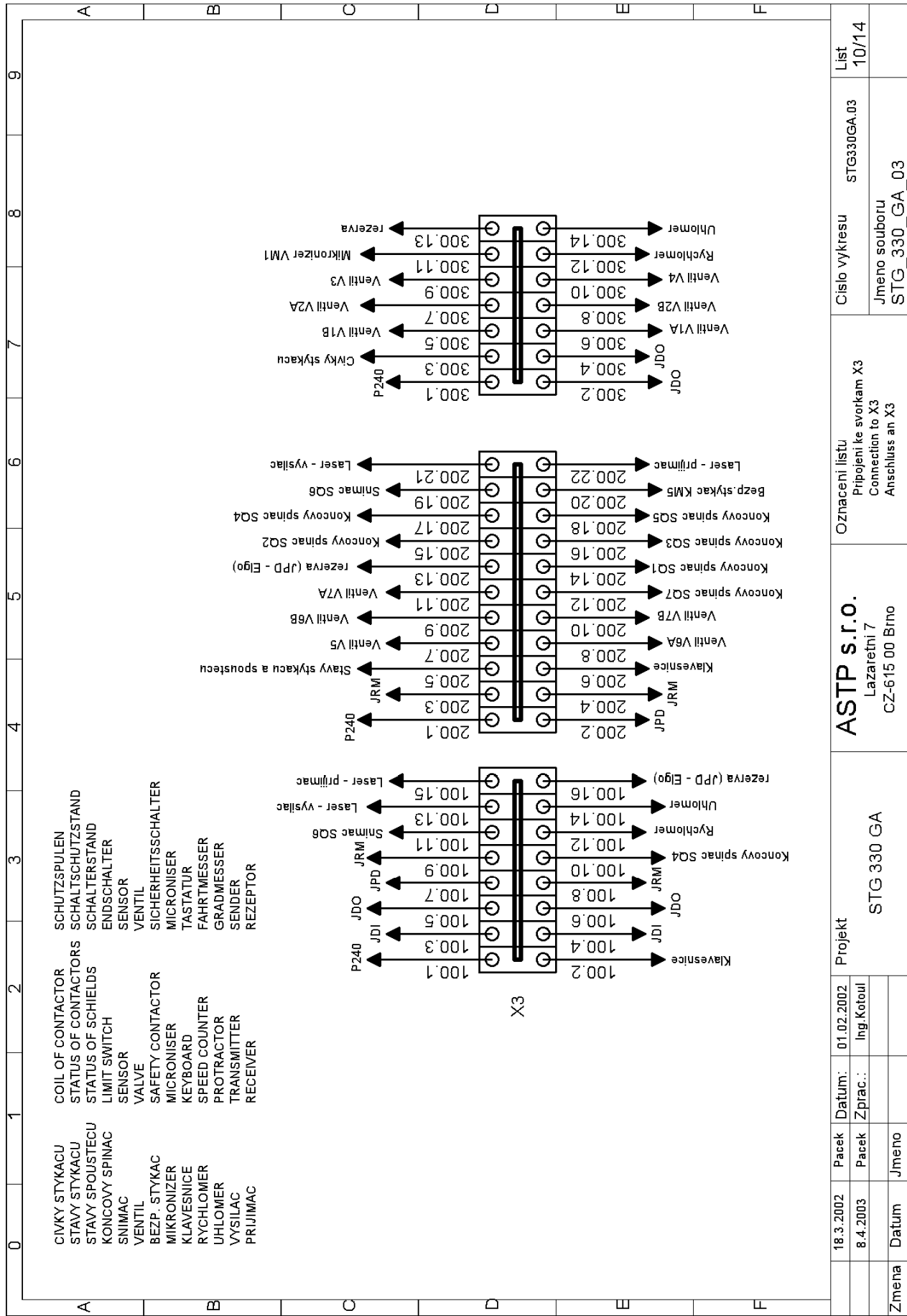


Wiring diagram VIII



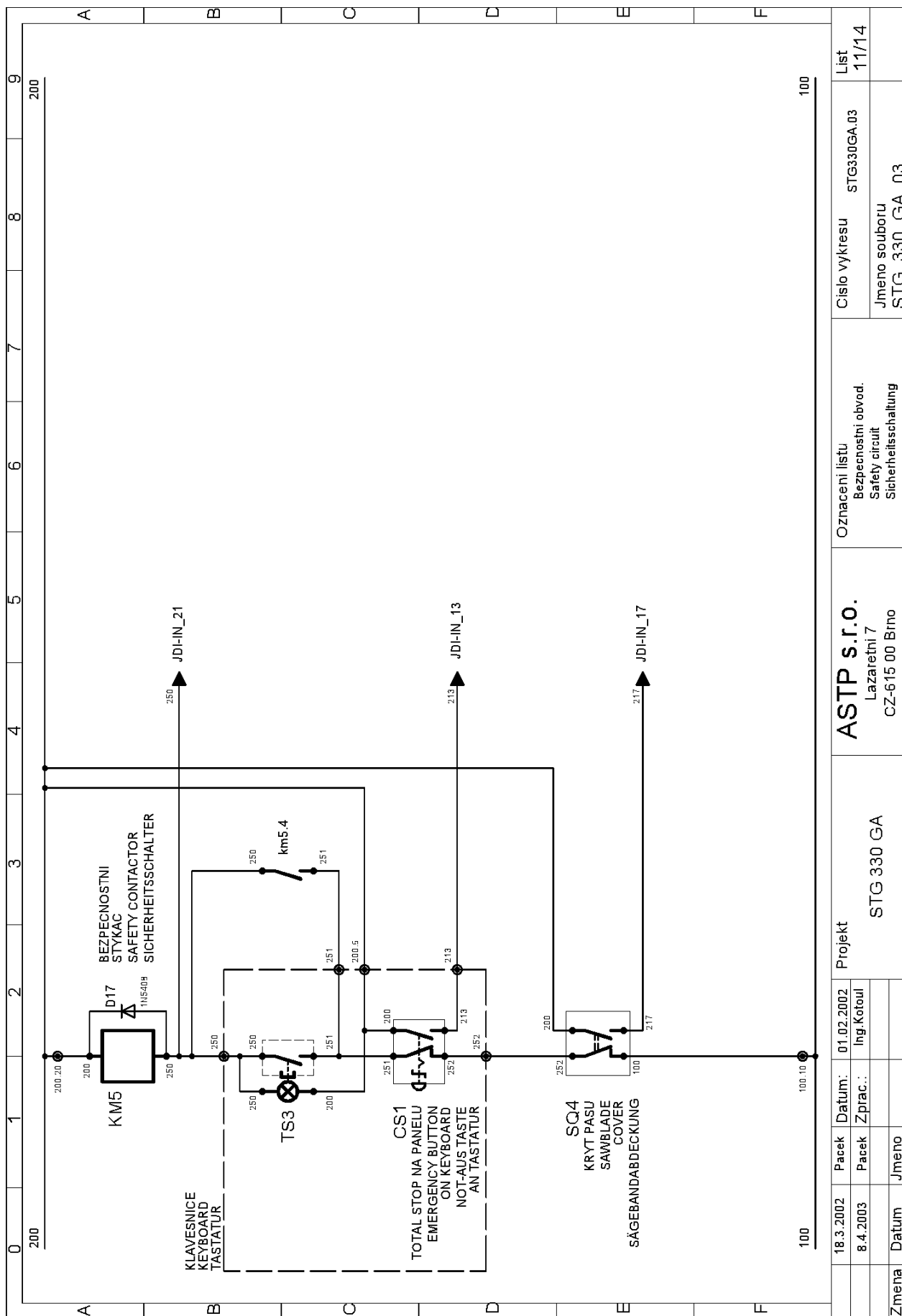
Wiring diagram IX

POTT	18.3.2002	Pacek	01.02.2002	Projekt	ASTP s.r.o.		Oznaceni listu	Cislo vykresu	List
Zmena	23.10.2002	Pacek	Ing.Kotoul		Lazaretni 7		Pripojeni modulu.	STG330GA.03	9/14
	8.4.2003	Pacek			CZ-615 00 Brno		Modul connection		
		Jmeno			STG 330 GA		Anschluss der Moduln	Jmeno souboru	
								STG 330 GA 03	



Wiring diagram X

Zmena	Datum	Jmeno				
	18.3.2002	Pacek	01.02.2002	Projekt	STG 330 GA	ASTP s.r.o. Lazaretni 7 CZ-615 00 Brno
	8.4.2003	Pacek	Ing. Kotouč			Oznaceni listu Pripojeni ke svorkam X3 Connection to X3 Anschluss an X3
		Jmeno				Cislo vykresu STG330GA.03
						List 10/14
						Jmeno souboru STG_330_GA_03



Wiring diagram XI

	0	1	2	3	4	5	6	7	8	9	
A	JDO - Signalizace stavu vstupu										
	1	Zapnout motor chlazení	tlacitko uvolněno		tlacitko stisknuto						
	2	Zapnout motor vnašace	Motor chlazení zapnut	Motor vnašace zapnut		Kryt pasu pily je otevřen					
	3	Zapnout čerpadlo hydrauliky	Motor vnašace zapnut	Čerpadlo hydrauliky zapnuto		Není materiál (pod. sverak)					
	4	Zapnout motor pasu	Motor pasu zapnut	Motor pasu zapnut		Není materiál (přitlak)					
	5	Upnout podavací sverak	Ochrana motoru chlazení OK	Ochrana motoru vnašace OK		Bezpečnostní obvod rozpojen					
	6	Otevřít podavací sverak	Ochrana motoru chlazení OK	Ochrana motoru vnašace OK							
	7	Otevřít hlavní sverak	Ochrana čerpadla hydrauliky OK	Ochrana motoru pasu OK							
	8	Upnout hlavní sverak	Aktivováno automatické ovládání	Aktivováno automatické ovládání							
	9	Aktivovat druhý stupeň čerpadla	Aktivováno ruční ovládání	Start automatického režimu							
	10	Aretovat podavac	Stop automatického režimu	Total stop aktivován							
	11	Aktivovat mikronizer		Podavací sverak upnut							
12	Aktivovat kontrolku aut. režimu		Hlavní sverak upnut								
			Pas pily je naphuty								
B	CPU - Signalizace stavu jednotky										
	1	Spojení s jednotkou DKL OK									
	2	Spojení s jednotkou JDO OK									
	3	Spojení s jednotkou JDI OK									
	4	Spojení s jednotkou JRM OK									
	5	Spojení s jednotkou JPD OK									
	6										
	7	Externí CAN - RXD									
	8	Externí CAN - TXD									
	9	Interní CAN - RXD									
	10	Interní CAN - TXD									
	11	Napájení 5V-KOMI									
12	Napájení 5V										
C	JDI - Signalizace stavu vstupu										
	1	Motor chlazení zapnut	tlacitko uvolněno		tlacitko stisknuto						
	2	Motor vnašace zapnut	Motor chlazení zapnut		Kryt pasu pily je otevřen						
	3	Čerpadlo hydrauliky zapnuto	Motor vnašace zapnut		Není materiál (pod. sverak)						
	4	Motor pasu zapnut	Čerpadlo hydrauliky zapnuto		Není materiál (přitlak)						
	5	Ochrana motoru chlazení OK	Motor pasu zapnut		Bezpečnostní obvod rozpojen						
	6	Ochrana motoru vnašace OK	Ochrana motoru chlazení OK								
	7	Ochrana čerpadla hydrauliky OK	Ochrana motoru vnašace OK								
	8	Ochrana motoru pasu OK	Ochrana čerpadla hydrauliky OK								
	9	Aktivováno automatické ovládání	Ochrana motoru pasu OK								
	10	Aktivováno ruční ovládání	Aktivováno automatické ovládání								
	11	Start automatického režimu	Aktivováno ruční ovládání								
12	Stop automatického režimu	Start automatického režimu									
13	Total stop aktivován	Stop automatického režimu									
14	Podavací sverak upnut										
15	Hlavní sverak upnut										
16	Pas pily je naphuty										
D	PWR - Signalizace stavu napájení										
	1	Napájení 5V-KOMI									
	2	Napájení 5V									
	E	JRM - Signalizace stavu ramene									
		1	Rameno dolu								
		2	Rameno nahoru								
		3	Rychloposuv ramene								
		4	Rameno je dole								
		5	Rameno je nad materiálem								
		6	Rameno je v klidu								
		7	Povel CPU - Zastavit rameno								
		8	Povel CPU - Rychloposuv ramene								
9		Povel CPU - Rameno dolu									
10		Povel CPU - Rameno nahoru									
11		Signal ze snimace vysky ramene									
12	Komunikace s CPU										
F	JPD - Signalizace stavu podavace										
	1	Podavac vzad									
	2	Podavac vpřed									
	3	Regulace podavace aktivni									
	4	Podavac je vzadu									
	5	Podavac je vpředu									
	6	Zadana poloha dosazena									
	7	Povel CPU - Podavac vzad									
	8	Povel CPU - Podavac vpřed									
	9	Povel CPU - Podavac stop									
	10	Reference podavace nastavena									
	11	Signal ze snimace vzdalenessi									
12	Komunikace s CPU										
Zmena	Datum	Jmeno	Projekt		Oznaceni listu		Cislo vykresu		List		
	13.2.2003	Letvina	16.8.2002		ASTP s.r.o.		STG330GA.03		12/14		
	8.4.2003	Pacek	Zprac.: Ing. Malinovsky		Lazaretni 7		Jmeno souboru		STG 330 GA 03		
					CZ-615 00 Brno		STG 330 GA 03				

Wiring diagram XII

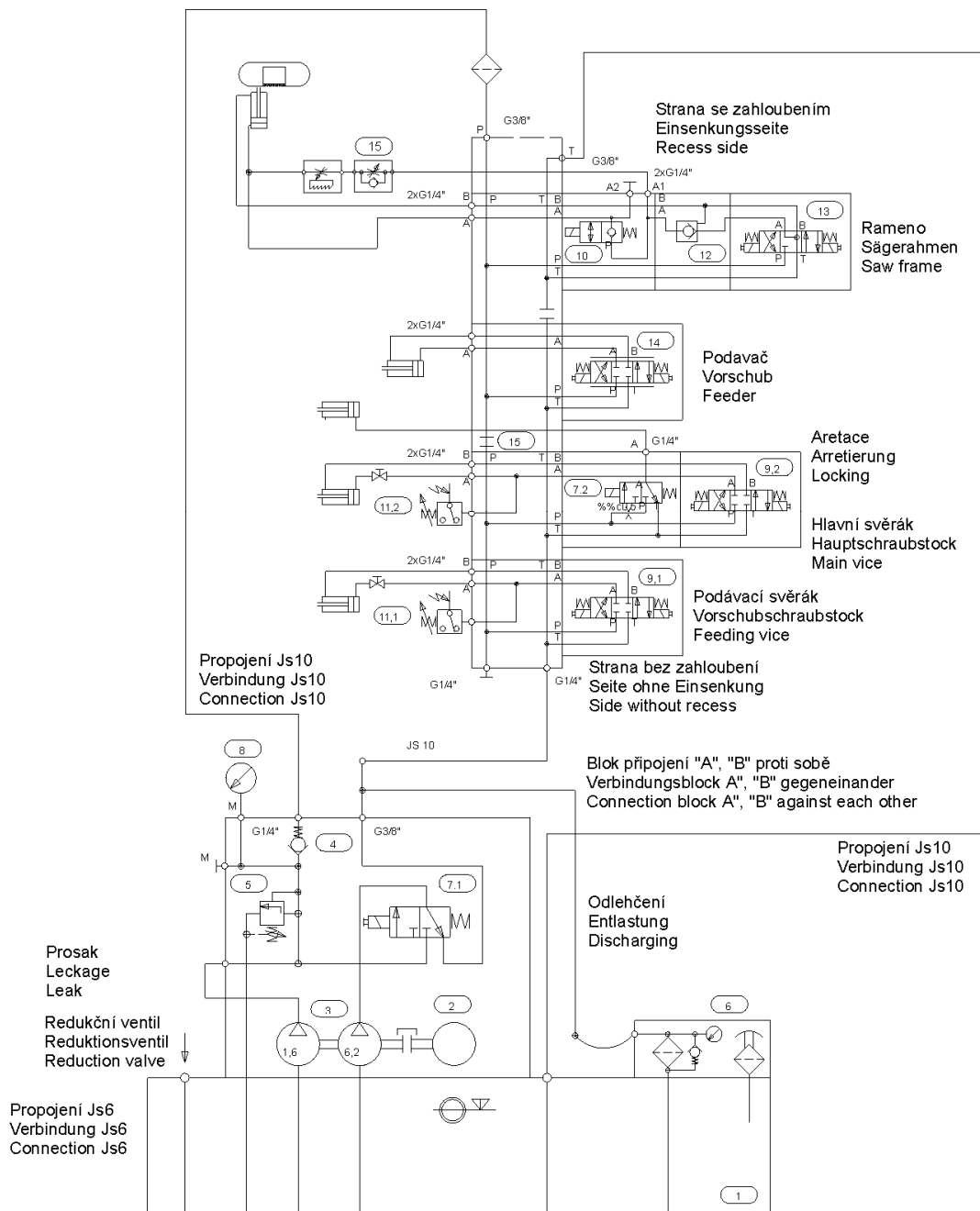


Wiring diagram XIII



Wiring diagram XIV

Hydraulic diagram



Základní technické parametry:
Technische Spezifikation:
Technical specification:

Q	8 + 2,1	dm ³ ·min ⁻¹	ot.	1410	min ⁻¹
p _{max}	4	MPa	P	1,1	kW

Hydraulické schéma:
Hydraulikschemata:
Hydraulic diagram:

870-1184

Schéma / Schema / Diagram: 8701184AU-B.DWG
Datum / Datum / Date: 22. 10. 2002

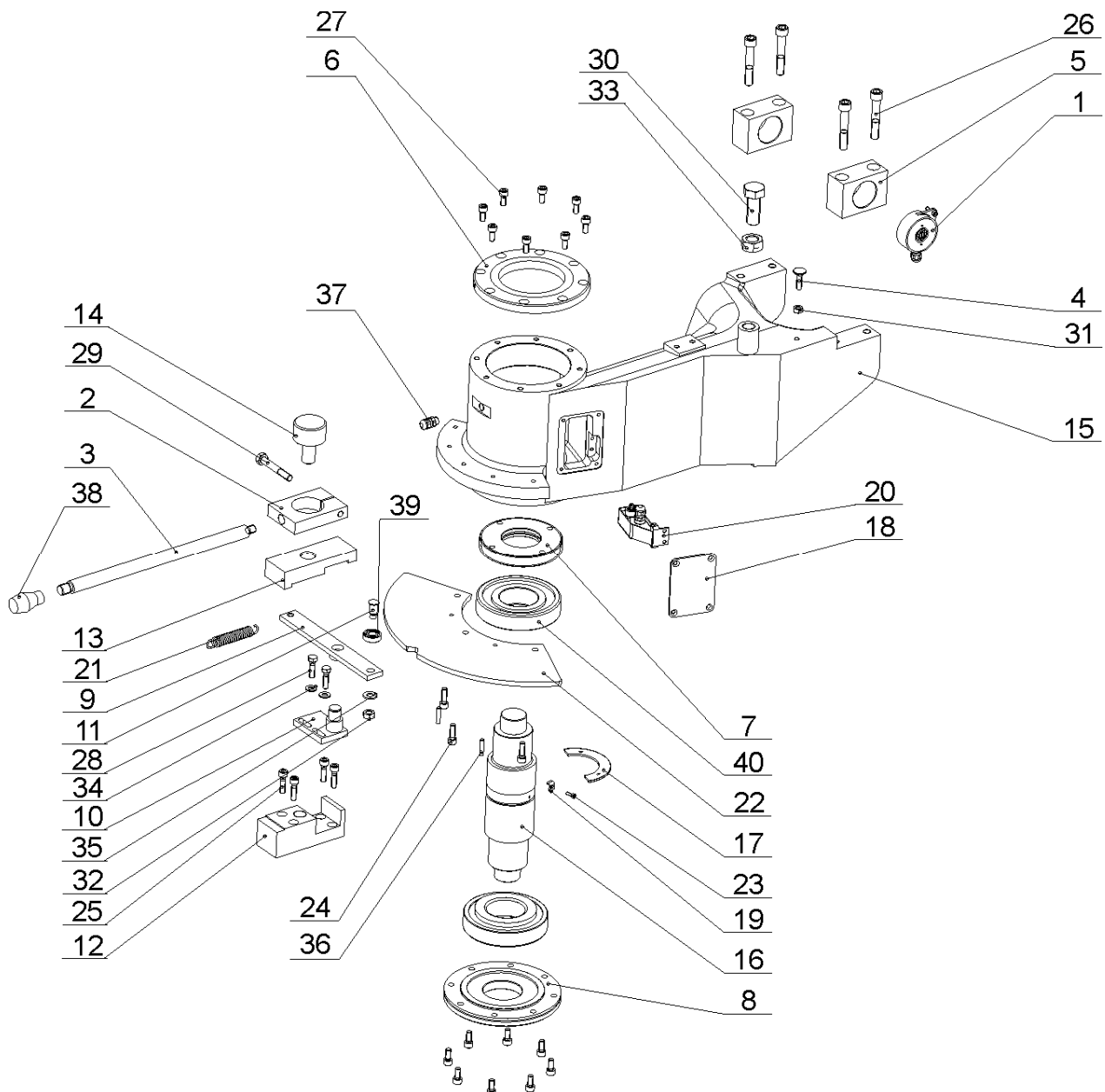
Hydraulic diagram

Spare parts list

Pos.	Name		Pcs.
1	Tank	N20 - Bomar	1
2	Electromotor	1LA7090-4AA	1
3	Hydro generator	P2-6,2/1,6L66313	1
4	One-way valve	VJ01-06/SG-1	1
5	By pass valve	VPP2-04/S-6S	1
6	Filter	FR 043 - 166/0 + DG200-06	1
	Enclosure in the filter	V3.0510-56	1
7	Distributor	ROX1-042D21/02400E1K5	2
8	Manometer	0-10 MPa	1
9	Distributor	RPE 3-043Z11/02400E1K5	2
10	Block of the speed shift	729-0084	1
11	Pressure switch	SUCO 0166 411 031 043	2
12	Hydraulic lock	VJR1-04/MA	1
13	Distributor	RPE 3-043Y11/02400E1K5	1
14	Proportional distributor	PRM 2-043Z11/04-24 MIKRO	1
15	Throttle valve	VSO1-04/R2,5-O	1

Drawing assemblies for spare parts order

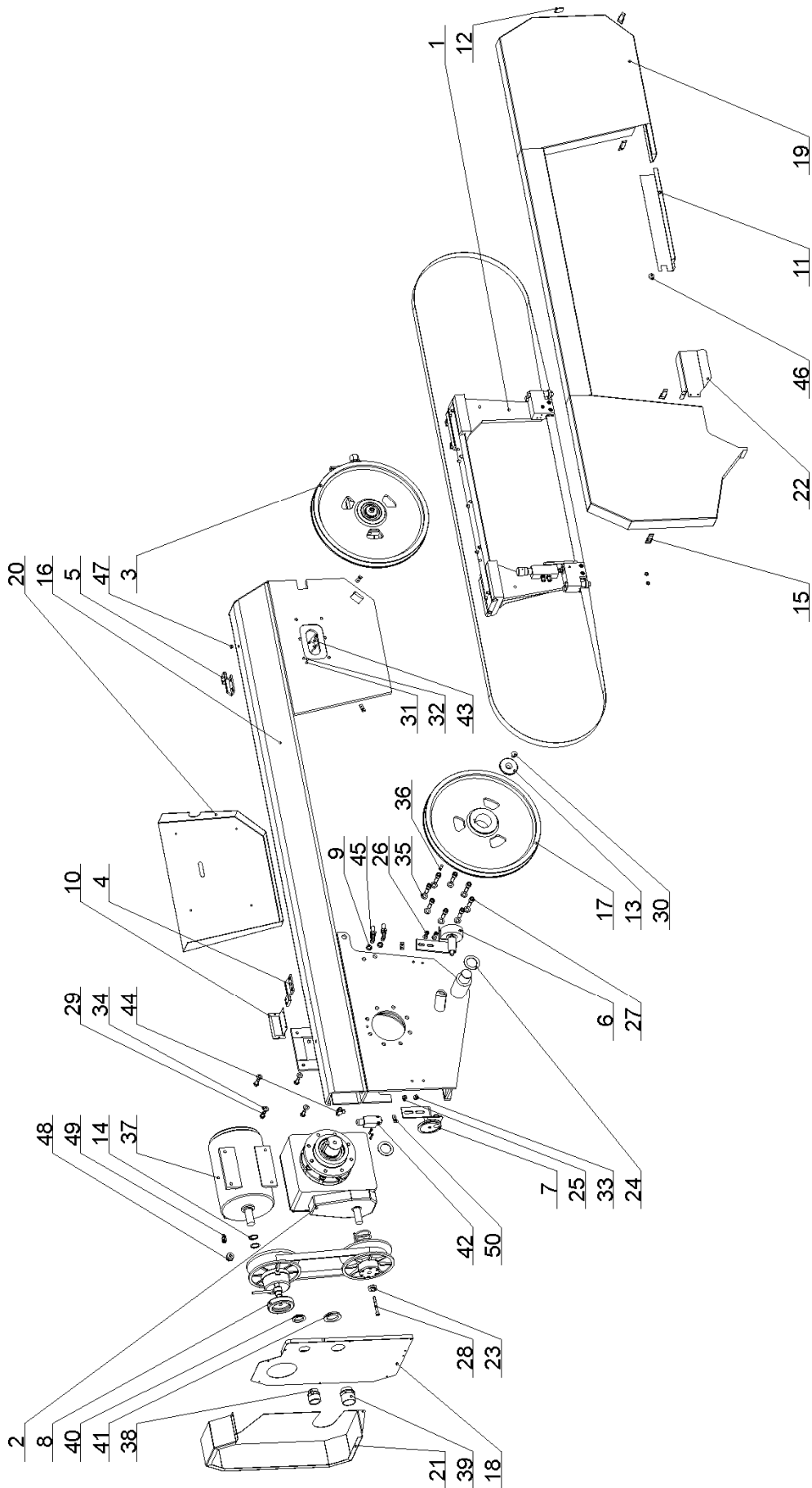
For spare parts order, you must always allege: type of machine (for example STG 120), serial number (for example 125) and year of construction (for example 1999).



Turning console

Turning console

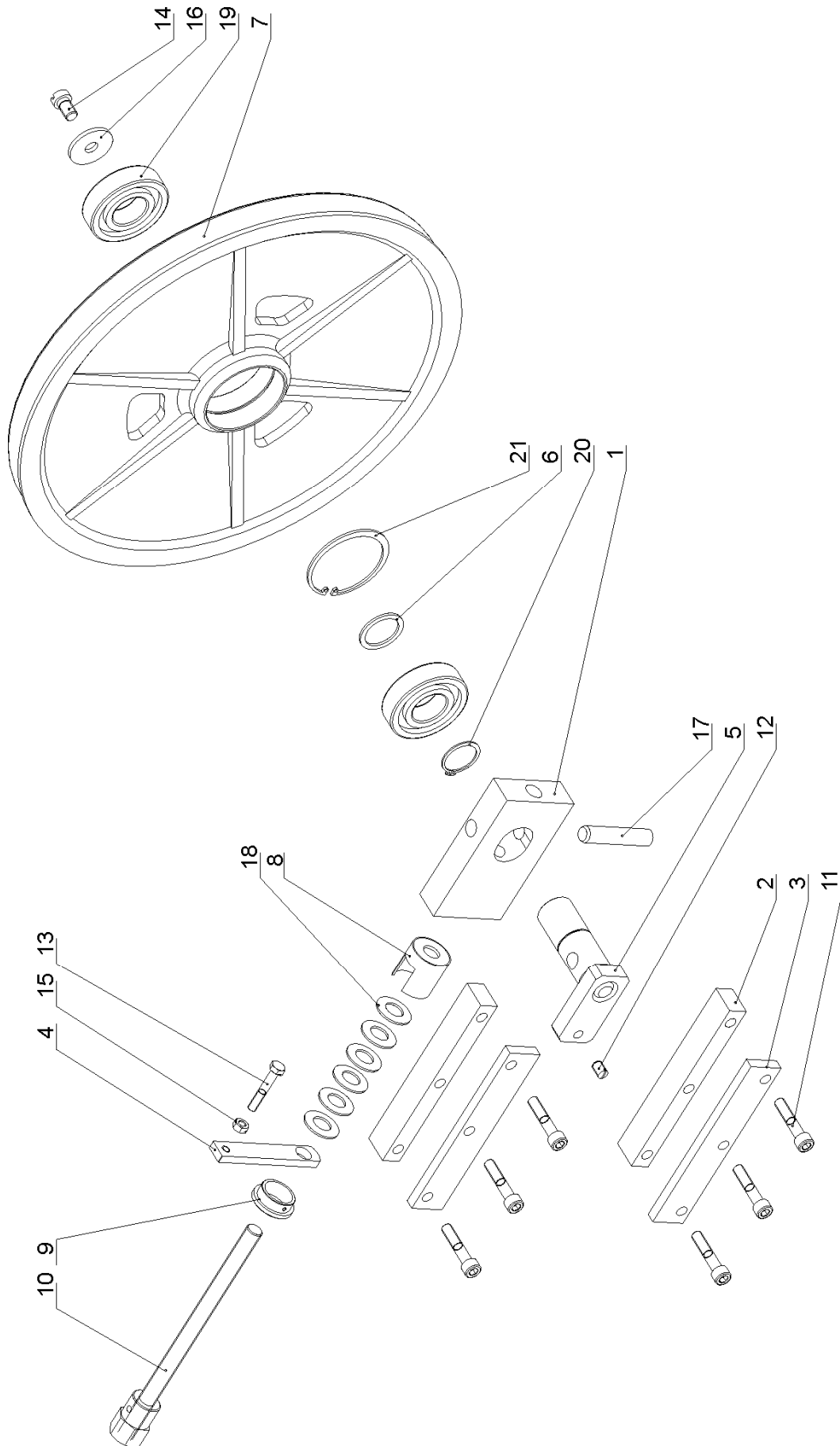
Pos.	Ord. Number	Name	Pcs.
1		Admeasurement of the angle	1
2	30.0702-004	Lever holder	1
3	30.0702-005	Lever	1
4	30.0702-013	Screw	1
5	30.0802-002	Saw frame bearing	2
6	30.0802-004	Top cover	1
7	30.0802-005	Bearing nut	1
8	30.0802-006	Lower holder	1
9	30.0802-009	Lever	1
10	30.0802-010	Pivot	1
11	30.0802-011	Bearing pivot	1
12	30.0809-007	Cube	1
13	30.0809-008	Clamp	1
14	30.0809-009	Screw	1
15	30.2902-001	Console	1
16	30.2902-003	Console pivot	1
17	30.2902-010	Segment	1
18	30.2902-111	Cover	1
19	30.2902-112	Holder	2
20		Sensor of the turning	1
21	31.0206-005	Spring 2.50x16x90x27	1
22	81.2902-007	Dividing plate	1
23	90.001.25.003	Screw M4x12 DIN 912 8.8	2
24	90.001.25.033	Screw M8x25 DIN 912 8.8	3
25	90.001.25.034	Screw M8x30 DIN 912 8.8	4
26	90.001.25.064	Screw M12x70 DIN 912 8.8	4
27	90.001.25.XXX	Screw M8x18 DIN 912 8.8	16
28	90.005.55.017	Screw M8x30 DIN 933 8.8	2
29	90.005.55.042	Screw M10x70 DIN 933 8.8	1
30	90.005.55.050	Screw M20x50 DIN 933 8.8	1
31	90.100.55.005	Nut M8 DIN 934 8.8	1
32	90.100.55.006	Nut M10 DIN 934 8.8	1
33	90.100.55.009	Nut M20 DIN 934 8.8	1
34	90.150.50.005	Washer Ø8,4 DIN 125	2
35	90.150.50.006	Washer Ø10,5 DIN 125	1
36	90.300.0Z.XXX	Cylindrical pin 6x28 DIN 6325	2
37	91.070.010	Bushing M12	1
38	94.002.001	Handle M12	1
39	95.001.005	Bearing 6001 2RS	1
40	95.300.001	Bearing 30312 AX	2



Saw frame

Saw frame

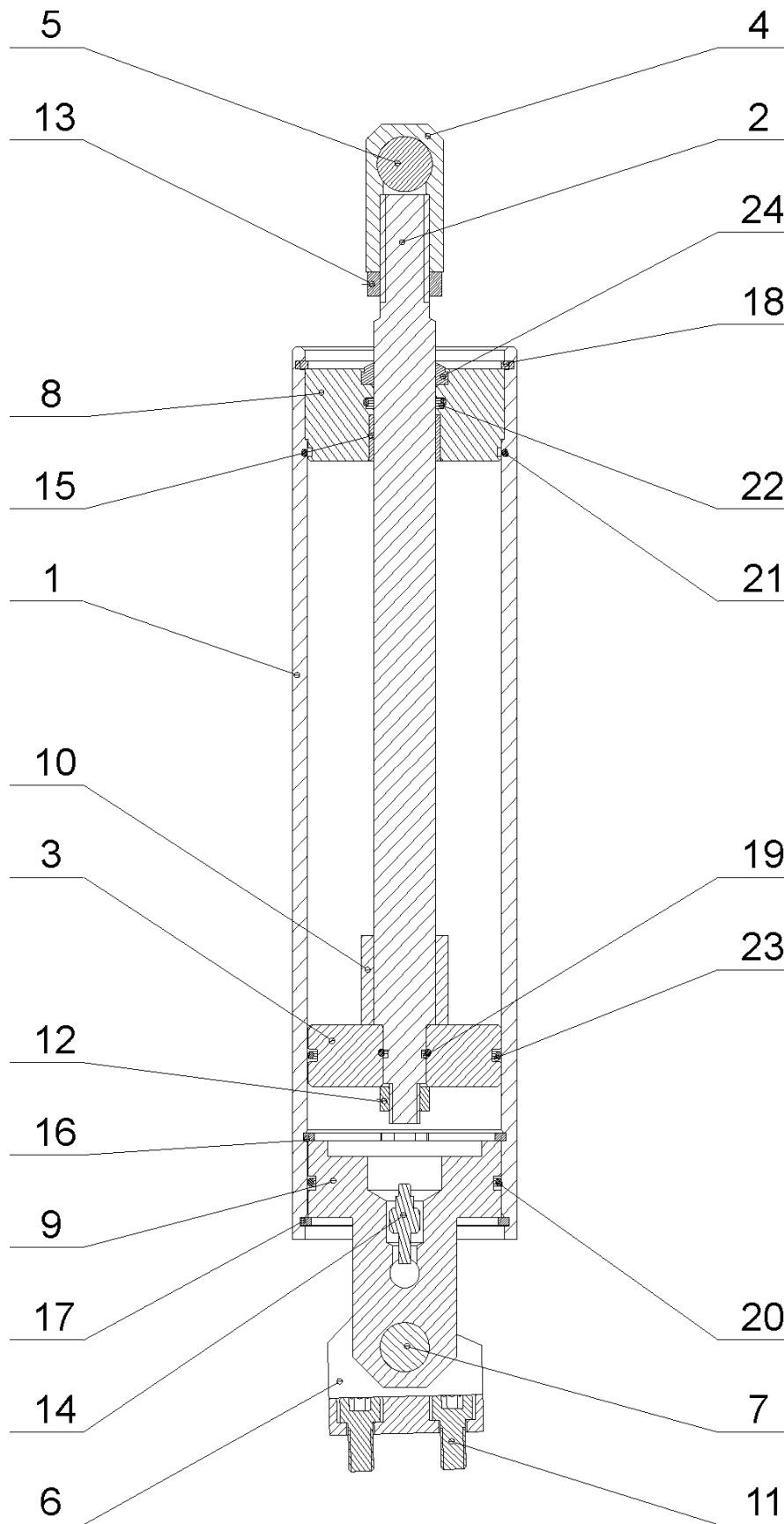
Pos.	Ord. Number	Name	Pcs.
1	see drawing	Saw band guiding	1
2		Gearbox	1
3	see drawing	Stretching	1
4		Left hinge	1
5		Right hinge	1
6	see drawing	Brush	1
7	see drawing	Band - wheel	1
8		Variator	1
9	30.0614-001	Ring	2
10	30.0814-016	Speedometer holder	1
11	30.0814-103	Cover	1
12	30.0814-113	Metal plate	1
13	30.1804-010	Wheel washer	1
14	30.1805-005	Electromotor ring	2
15	30.1814-110	Hinge	4
16	30.2904-001	Saw arm	1
17	30.2904-003	Driving wheel	1
18	30.2914-202	Cover	1
19	30.2914-203	Saw arm cover	1
20	30.2914-204	Stretching cover	1
21	30.2914-205	Variator cover	1
22	30.2914-209	Brush cover	1
23	30.2914-401	Band - wheel	1
24	81.0804-005	Ring	2
25	90.001.25.029	Screw M8x12 DIN 912	2
26	90.001.25.031	Screw M8x16 DIN 912	2
27	90.001.25.060	Screw M12x40 DIN 912	8
28	90.001.25.095	Screw M8x70 DIN 912	1
29	90.005.55.024	Screw M10x25 DIN 933	4
30	90.011.27.009	Screw M12x20 DIN 7991	1
31	90.012.50.007	Screw M4x30 DIN 84	4
32	90.150.50.002	Washer d4,3 DIN 125	4
33	90.150.50.005	Washer d8,4 DIN 125	4
34	90.150.50.006	Washer d10,5 DIN 125	4
35	90.150.50.007	Washer d13 DIN 125	8
36	90.300.0Z.010	Cylindrical pin 8x32 DIN 6325	1
37	91.001.012	Electromotor 7AA 100L 04	1
38	91.071.004	Hose bushing PG29	1
39	91.071.005	Hose bushing PG36	1
40	91.072.007	Nut PG29	1
41	91.072.008	Nut PG36	1
42	91.173.007	Limit switch	1
43	91.173.012	Limit switch - lock	1
44	92.006.001	Jumper T	1
45	92.009.001	Angle grommet	2
46	94.007.001	Plastic screw M5x10	1
47	94.102.001	Ewad	2
48	94.202.005	Reduction 3/4"-6	1
49	94.204.001	Hose holder	1
50	99.100.002	Hinge	4



Stretching

Stretching

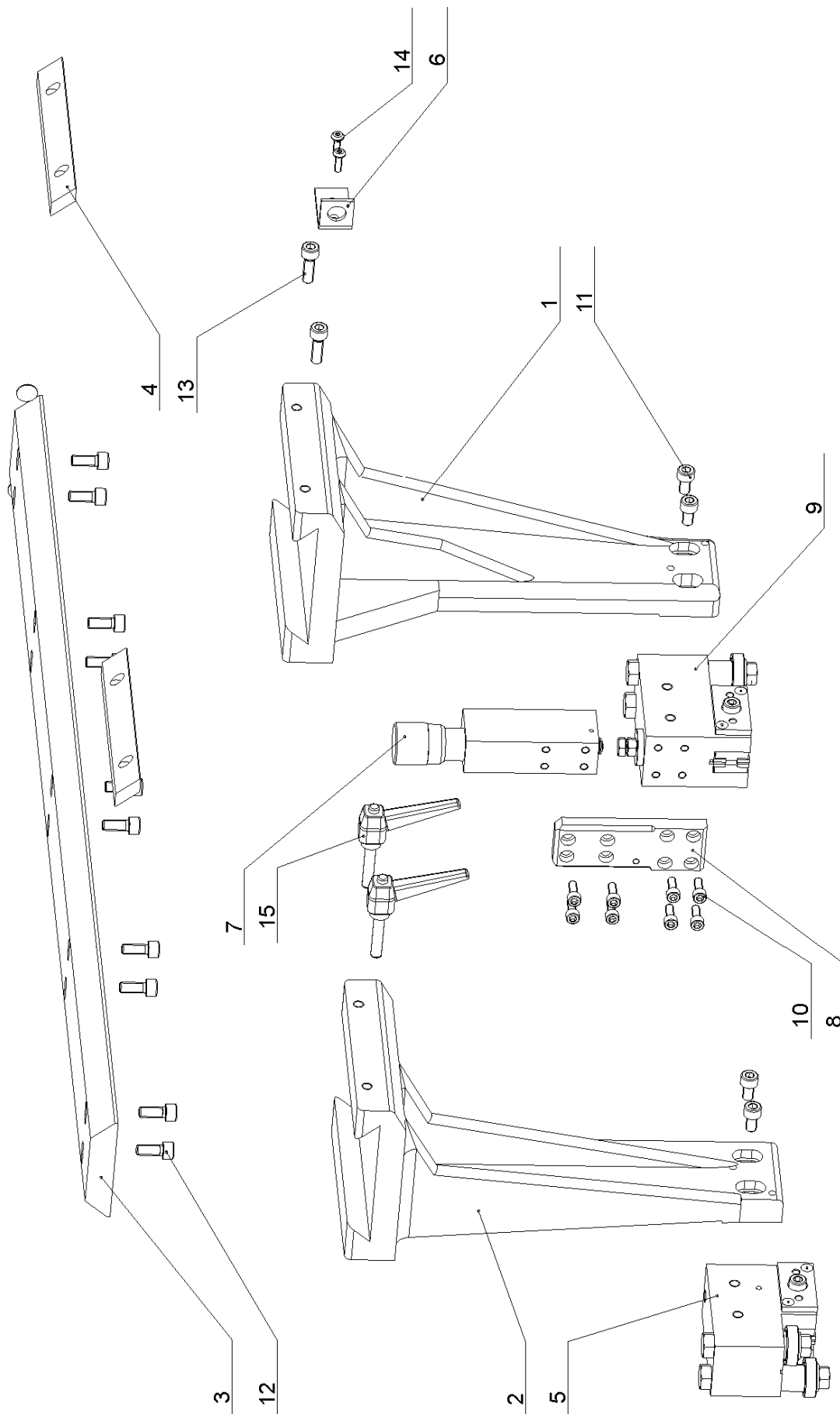
Pos.	Ord. Number	Name	Pcs.
1	30.0808-001	Stretching cube	1
2	30.0808-002	Guiding listel	2
3	30.0808-006	Listel	2
4	30.1708-004	Screw holder	1
5	30.1808-003	Stretching pivot	1
6	30.1808-004	Distance ring	1
7	30.2908-003	Stretching wheel	1
8	30.3508-002	Spring holder	1
9	30.3508-004	Measuring ring	1
10	30.4008-001	Stretching screw	1
11	90.001.25.052	Screw M10x 50 DIN 912 8.8	6
12	90.002.2D.014	Screw M10x16 DIN 913 45H	1
13	90.005.55.XXX	Screw M8x50 DIN 933	1
14	90.012.50.017	Screw M12x20 DIN 84 4.8	1
15	90.100.55.005	Nut M8 DIN 934 8.8	1
16	90.151.50.002	Washer Ø13 DIN 440	1
17	90.301.OZ.XXX	Cylindrical pin Ø16x80 DIN 7	1
18	90.350.OZ.002	Belleville spring 35.5x18.3x2.0x2.8	6
19	95.001.026	Bearing 6307 2RS	2
20	95.800.014	Retaining ring Ø35 DIN 471	1
21	95.801.013	Retaining ring Ø80 DIN 472	1



Lifting cylinder

Lifting cylinder

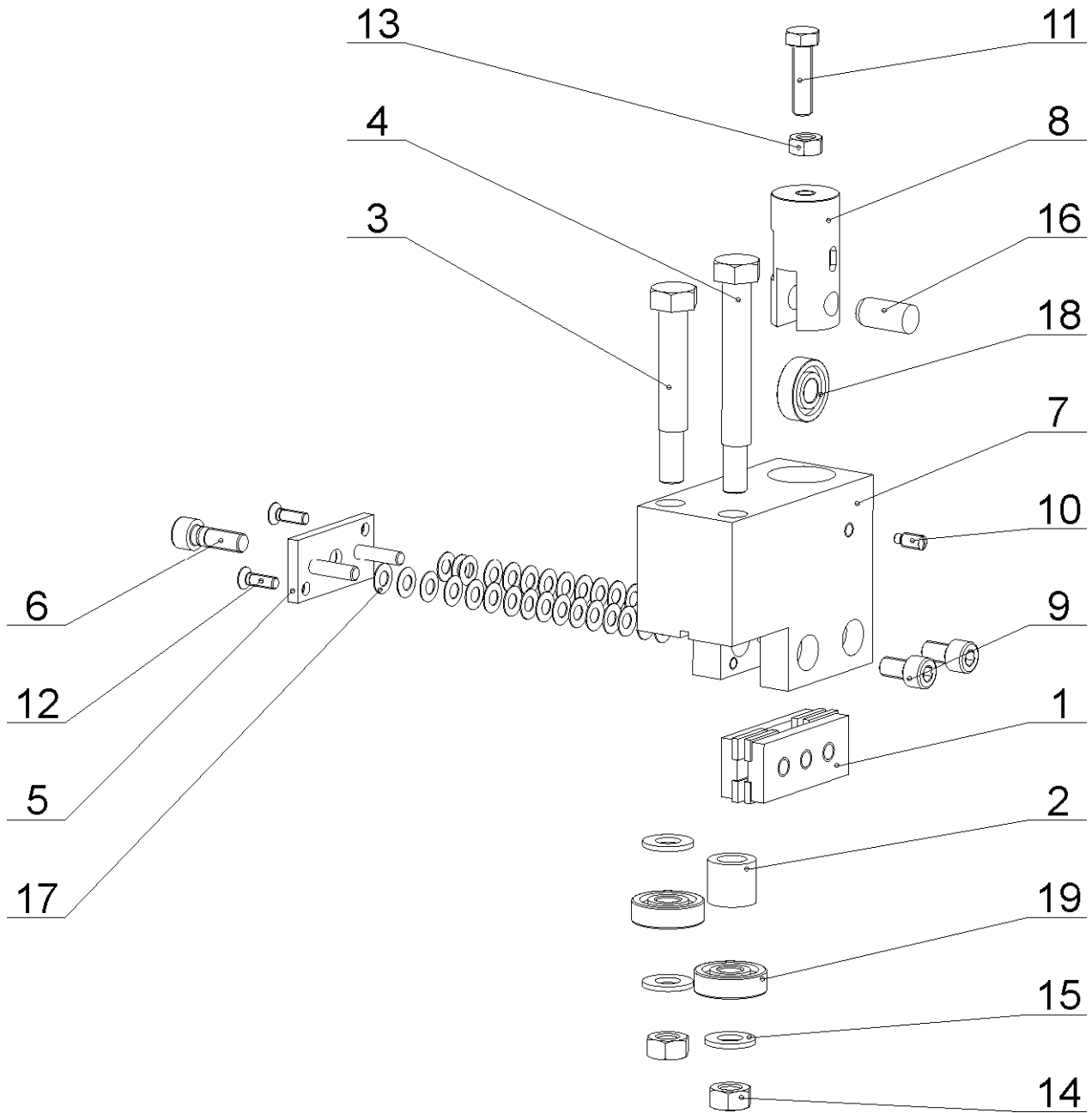
Pos.	Ord. Number	Name	Pcs.
1	30.0607-001	Cylinder	1
2	30.0807-003	Piston rod	1
3	30.0807-004	Piston	1
4	30.0807-006	Piston rod holder	1
5	30.0807-007	Top pivot	1
6	30.0807-008	Lower holder	1
7	30.0807-009	Bottom pivot	1
8	30.1807-001	Top cover	1
9	30.1807-004	Bottom cover	1
10	30.2907-002	Tube	1
11	90.001.25.031	Screw M8x16 DIN 912 8.8	2
12	90.100.55.006	Nut M10 DIN 934 8.8	1
13	90.101.55.003	Nut M16 DIN 439 8.8	1
14	92.151.001	Safety cylinder VPN-H 1/4	1
15	95.700.003	Bush CU 20x15	1
16	95.801.011	Retaining ring Ø63 DIN 472	1
17	95.801.012	Retaining ring Ø65 DIN 472	1
18	95.801.024	Retaining ring Ø68 DIN 472	1
19	96.001.004	O-ring 10x2	1
20	96.001.015	O-ring 56x3,55	1
21	96.001.016	O-ring 60x2	1
22	96.002.010	O-ring 20x3	1
23	96.002.020	O-ring 56x3,5	1
24	96.060.002	Wiping ring 20x28	1



Saw band guiding

Saw band guiding

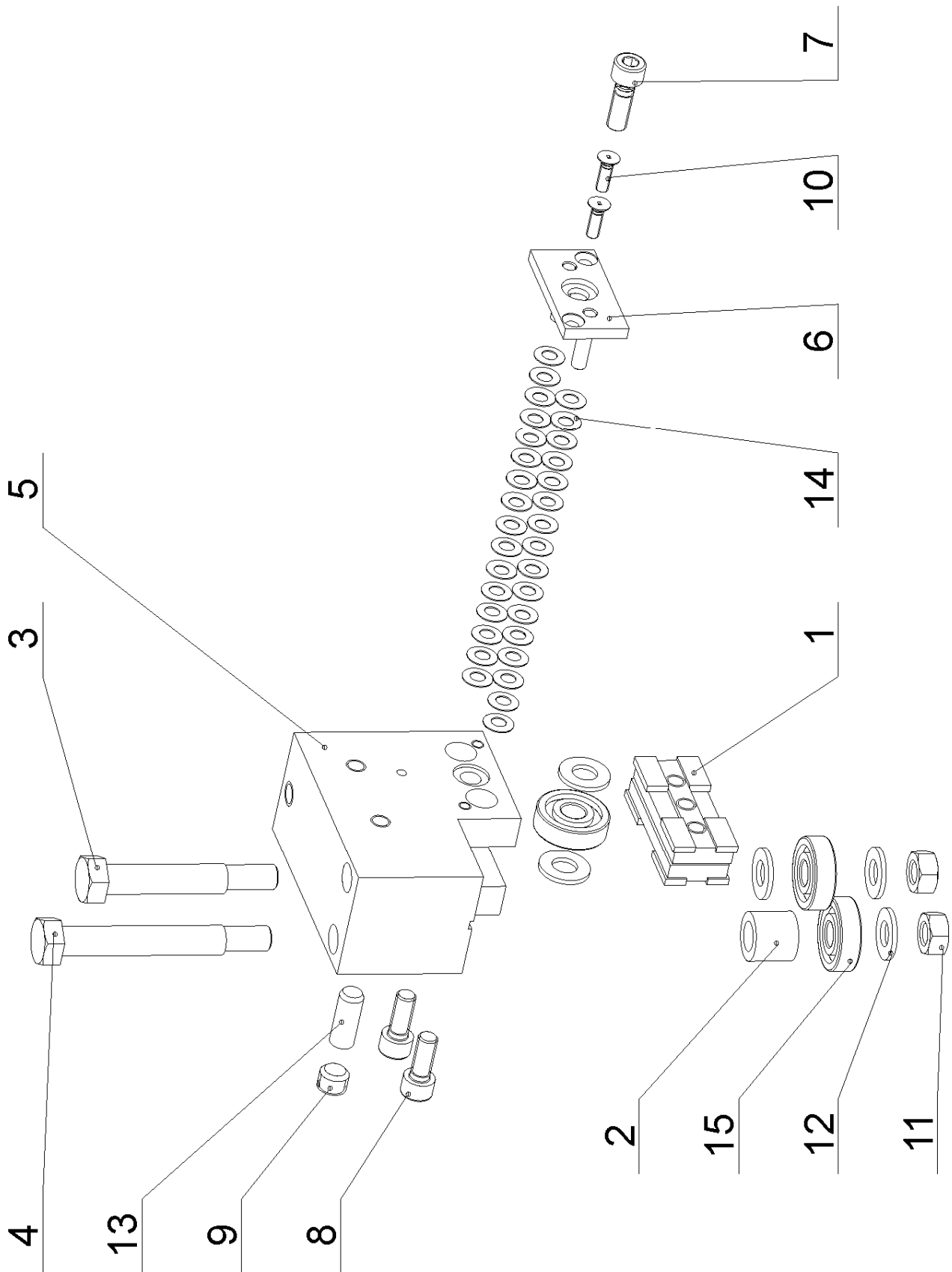
Pos.	Ord. Number	Name	Pcs.
1	30.0810-003	Right holder of the guiding cube	1
2	30.0810-004	Left holder of the guiding cube	1
3	30.0810-008	Guiding	1
4	30.0810-011	Holder listel	2
5	see drawing	Right guiding cube	1
6	30.1814-011	Cylinder holder	1
7	see drawing	Pressure regulation	1
8	30.2016-006	Plate	1
9	see drawing	Left guiding holder	1
10	90.001.25.017	Screw M6x16 DIN 912 8.8	8
11	90.001.25.030	Screw M8x14 DIN 912 8.8	4
12	90.001.25.032	Screw M8x20 DIN 912 8.8	10
13	90.001.25.033	Screw M8x25 DIN 912 8.8	2
14	90.013.27.005	Screw M5x16 ISO 7380 10.9	2
15	94.008.003	Lever M8x40	2



Right guiding cube

Right guiding cube

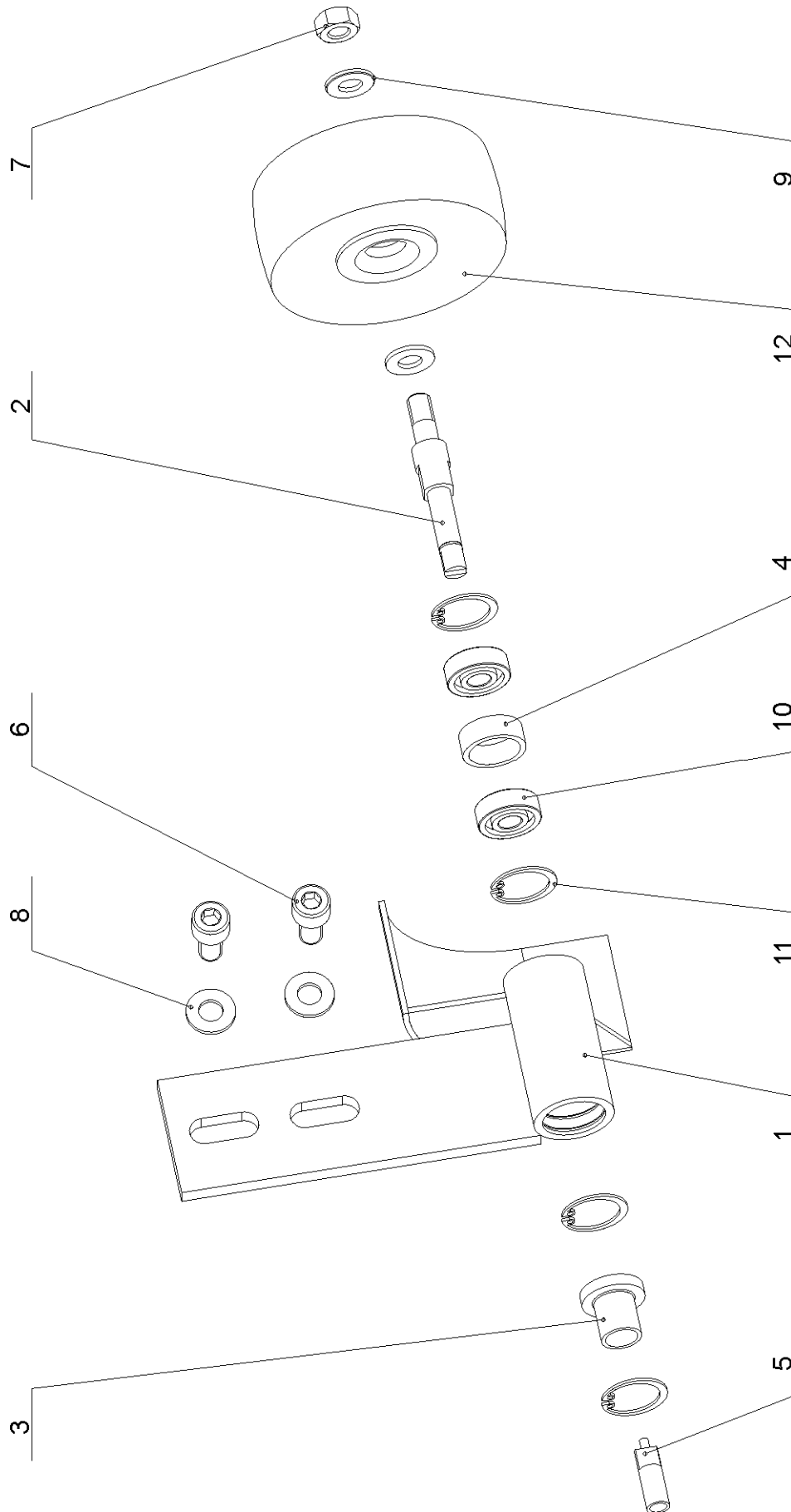
Pos.	Ord. Number	Name	Pcs.
1	30.0810-005	HM holder	2
2	30.0810-007	Bearing tube	1
3	30.0810-009	Eccentric	1
4	30.0810-010	Eccentric	1
5	30.0810-103	Guiding plate	1
6	30.0810-104	Screw	1
7	30.1810-101	Right guiding cube	1
8	30.1810-102	Holder of the bearing	1
9	90.001.25.030	Screw M8x14 DIN 912 8.8	2
10	90.004.2D.0XX	Screw M6x14 DIN 915 45H	1
11	90.005.55.017	Screw M8x30 DIN 933 8.8	1
12	90.011.27.022	Screw M5x16 DIN 7991 10.9	2
13	90.100.55.005	Nut M8 DIN 934 8.8	1
14	90.100.55.006	Nut M10 DIN 934 8.8	2
15	90.150.50.006	Washer Ø10,5 DIN 125	3
16	90.301.OZ.XXX	Cylindrical pin 12x26 DIN 7	1
17	90.350.OZ.001	Belleville spring 12.5x6.2x0.5	32
18	95.001.004	Bearing 6000 2RS	1
19	95.001.014	Bearing 6200 2RS	2



Left guiding cube

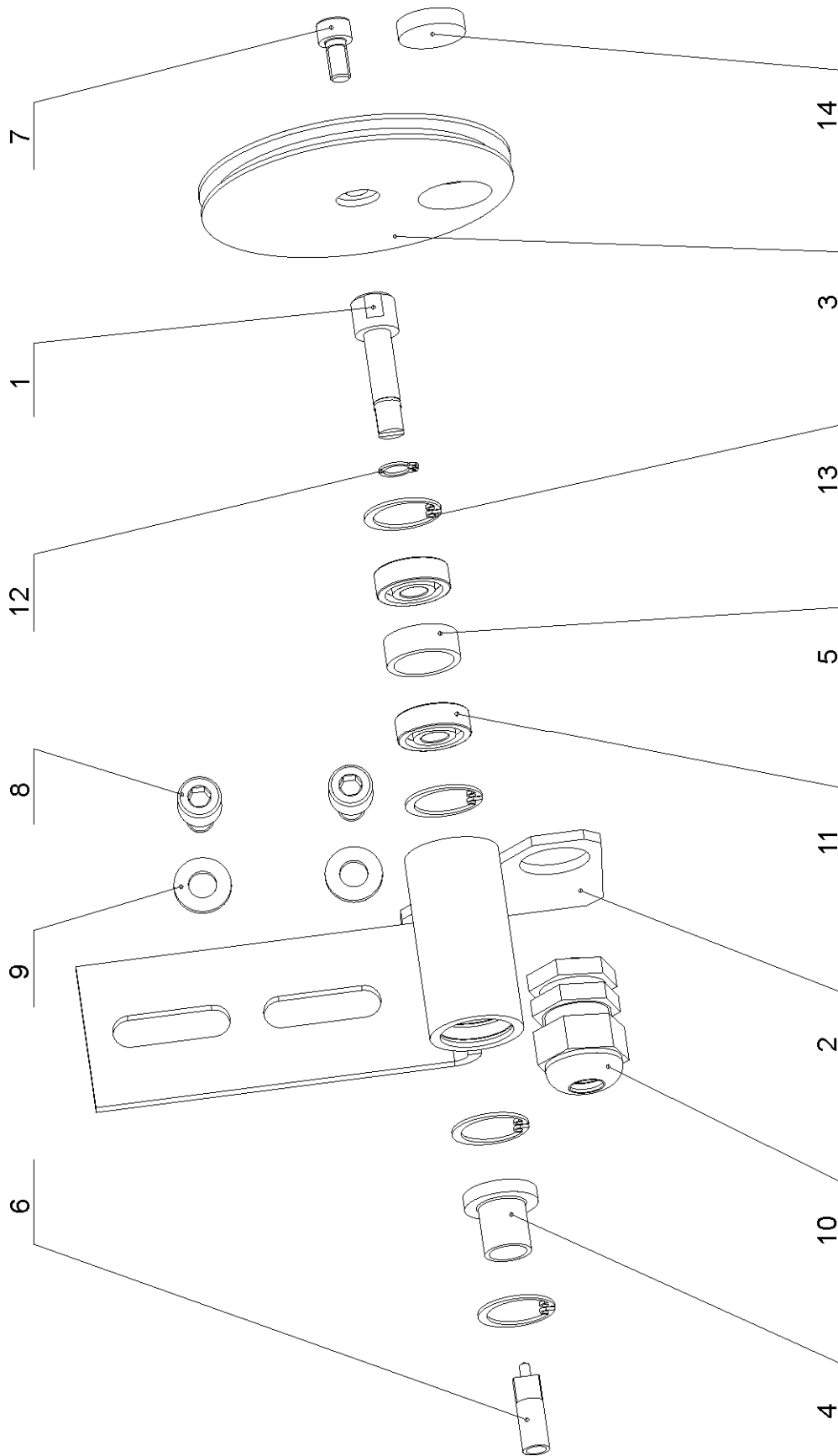
Left guiding cube

Pos.	Ord. Number	Name	Pcs.
1	30.0810-005	HM holder	2
2	30.0810-007	Bearing tube	1
3	30.0810-009	Eccentric	1
4	30.0810-010	Eccentric	1
5	30.0810-101	Left guiding cube	1
6	30.0810-103	Guiding plate	1
7	30.0810-104	Screw	1
8	90.001.25.032	Screw M8x20 DIN 912 8.8	2
9	90.002.2D.016	Screw M12x10 DIN 913 45H	1
10	90.011.27.XXX	Screw M8x20 DIN 7991 10.9	2
11	90.100.55.006	Screw M10 DIN 934 8.8	2
12	90.150.50.006	Washer Ø10,5 DIN 125	5
13	90.301.0Z.XXX	Cylindrical pin 10x26 DIN 7	1
14	90.350.0Z.001	Belleville spring 12.5x6.2x0.5	32
15	95.001.014	Bearing 6200 2RS	3

**Brush**

Brush

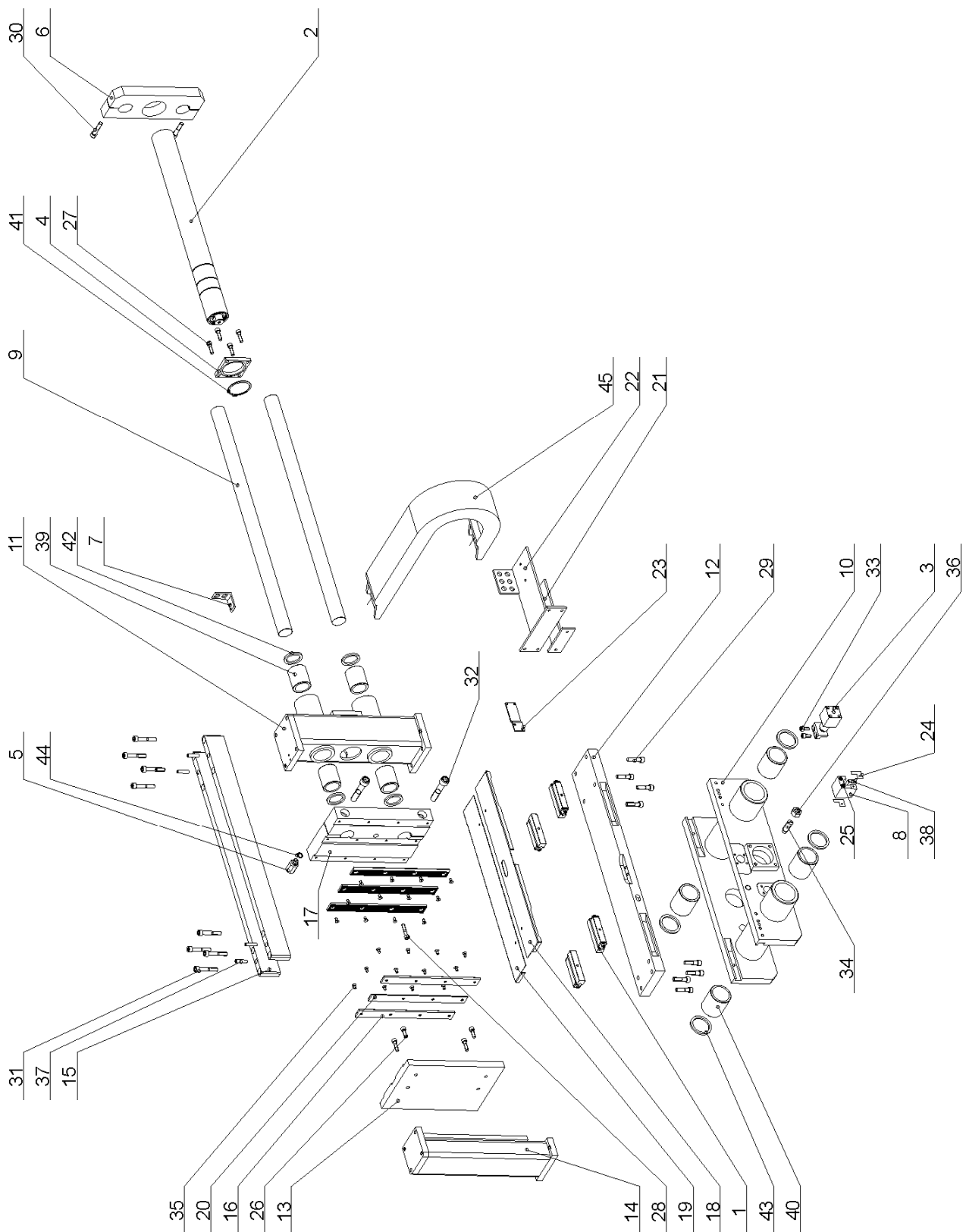
Pos.	Ord. Number	Name	Pcs.
1	30.2914-301	Brush holder	1
2	30.4314-002	Brush shaft	1
3	30.4314-003	Bush	1
4	30.4314-004	Distance ring	1
5	30.4314-006	Terminal	1
6	90.001.25.031	Screw M8x16 DIN 912	2
7	90.100.55.005	Nut M8 DIN 934	1
8	90.150.50.005	Washer Ø8,4 DIN 125	3
9	90.150.50.XXX	Washer Ø8,4 DIN 125	1
10	95.001.001	Bearing 608 2RS	2
11	95.801.XXX	Retaining ring Ø22 DIN 472	4
12	49.250.006	Brush	1



Brush sheave

Brush sheave

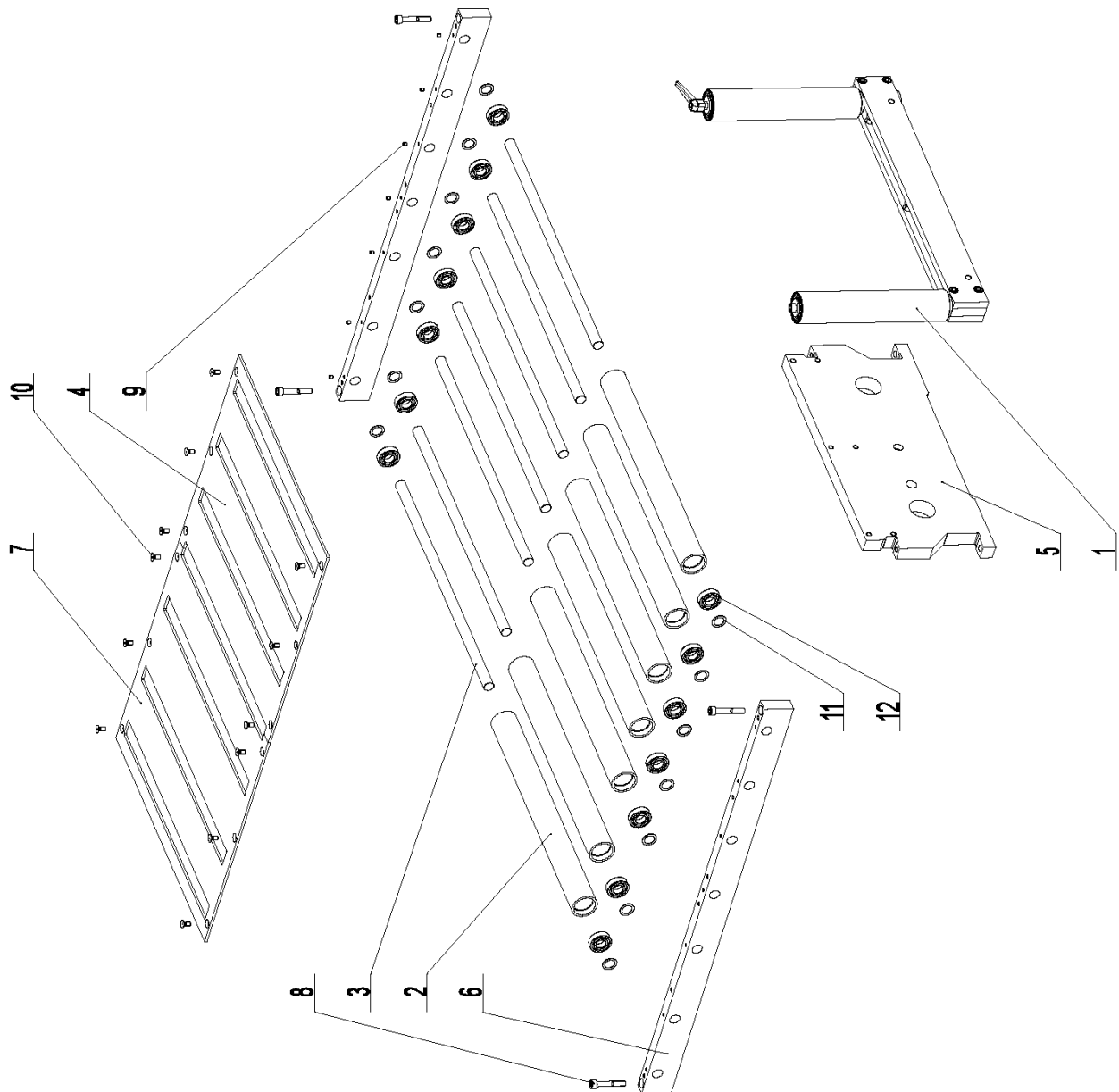
Pos.	Ord. Number	Name	Pcs.
1	30.2914-107	Shaft	1
2	30.2914-402	Holder	1
3	30.2914-404	Sheave	1
4	30.4314-003	Bush	1
5	30.4314-004	Distance ring	1
6	30.4314-006	Terminal	1
7	90.001.25.016	Screw M6x12 DIN 912	1
8	90.001.25.029	Screw M8x12 DIN 912	2
9	90.150.50.005	Washer Ø8,4 DIN 125	2
10	91.070.004	Bushing	1
11	95.001.001	Bearing 608 2RS	2
12	95.800.002	Retaining ring Ø8 DIN 471	1
13	95.801.XXX	Retaining ring Ø22 DIN 472	4
14	99.060.002	Magnet 22x8	1



Feeding vice

Feeding vice

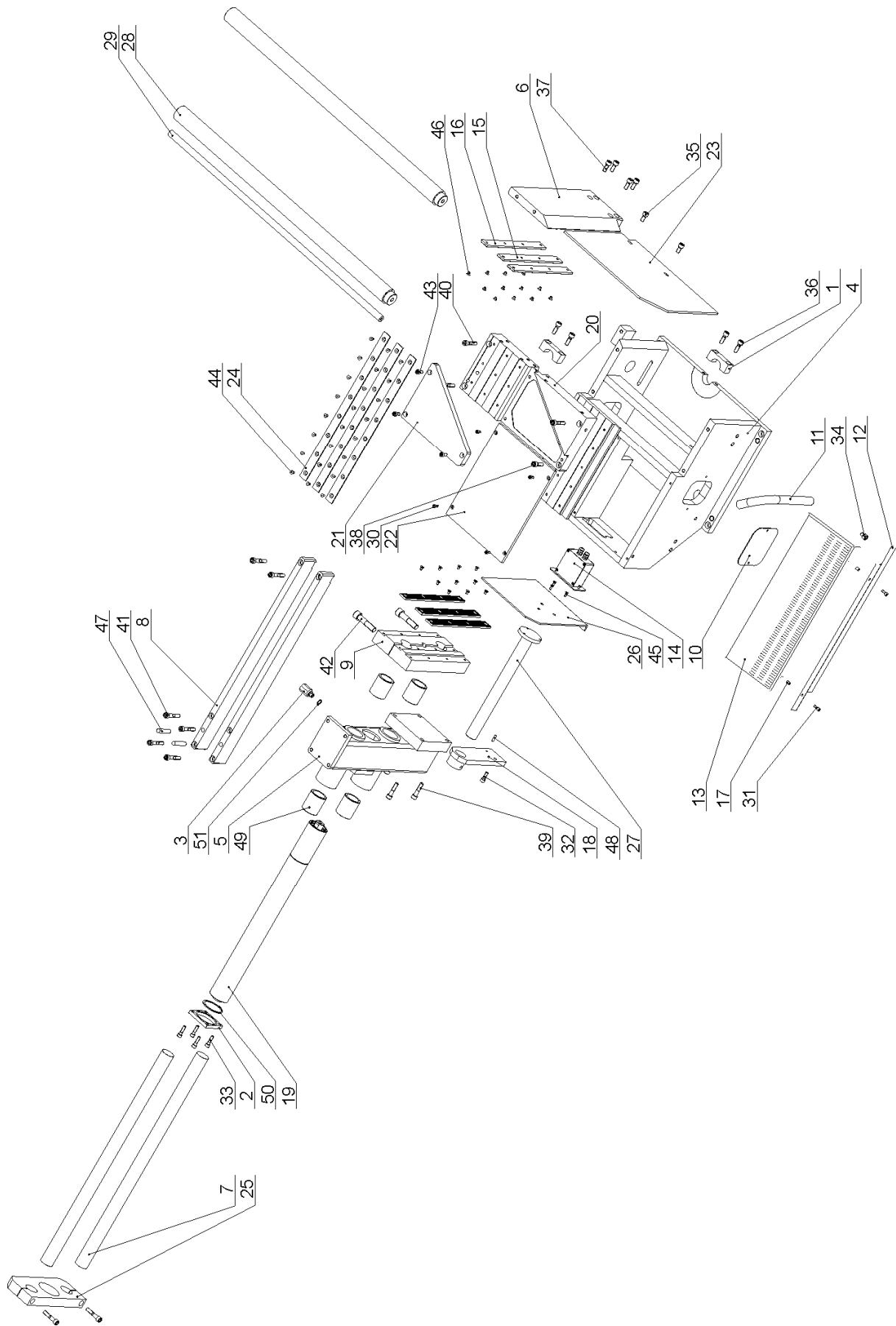
Pos.	Ord. Number	Name	Pcs.
1	See drawing	Roller element	4
2	See drawing	Cylinder	1
3	See drawing	Fixation cylinder	1
4	30.2011-010	Splice plate	1
5	30.2011-011	Screwing	1
6	30.2011-013	Glasses	1
7	30.2014-011	Hose holder	1
8	30.2014-023	Sensor holder	1
9	30.2903-004	Guiding bar	2
10	30.2911-001	Base	1
11	30.2911-002	Pillar	1
12	30.2911-003	Base	1
13	30.2911-004	Jaw	1
14	30.2911-007	Pillar	1
15	30.2911-010	Listel	2
16	30.2911-021	Listel	4
17	30.2911-022	Jaw	1
18	30.2911-023	Cover	1
19	30.2911-024	Cover	1
20	30.2911-025	Listel	2
21	30.2911-026	Console	1
22	30.2911-027	Console	1
23	30.2911-028	Limit switch holder	1
24	30.3511-013	Scraper	2
25	90.001.25.023	Screw M6x50 DIN 912	2
26	90.001.25.033	Screw M8x25 DIN 912	2
27	90.001.25.034	Screw M8x30 DIN 912	6
28	90.001.25.036	Screw M8x40 DIN 912	1
29	90.001.25.050	Screw M10x40 DIN 912	8
30	90.001.25.052	Screw M10x50 DIN 912	2
31	90.001.25.054	Screw M10x60 DIN 912	8
32	90.001.25.098	Screw M16x80 DIN 912	2
33	90.001.25.XXX	Screw M8x18 DIN 912	2
34	90.004.2D.0XX	Screw M16x40 DIN 915	1
35	90.011.27.005	Screw M6x12 DIN 7991	24
36	90.100.55.008	Nut M16 DIN 934	1
37	90.302.0Z.003	Taper pin + thread M8x36 DIN 7978	4
38	91.270.004	Magnetic sensor SIKO	1
39	95.710.001	Ball bush 40x60 KH	4
40	95.710.002	Ball bush 50x70	4
41	95.800.021	Retaining ring Ø62 DIN 471	1
42	96.040.003	Scraper cup 40x52x5	4
43	96.040.004	Scraper cup 50x62x5	4
44	96.082.002	Sealing ring Cu 13/17	1
45	99.170.001	Pipes leading	1



Roller conveyor

Roller conveyor

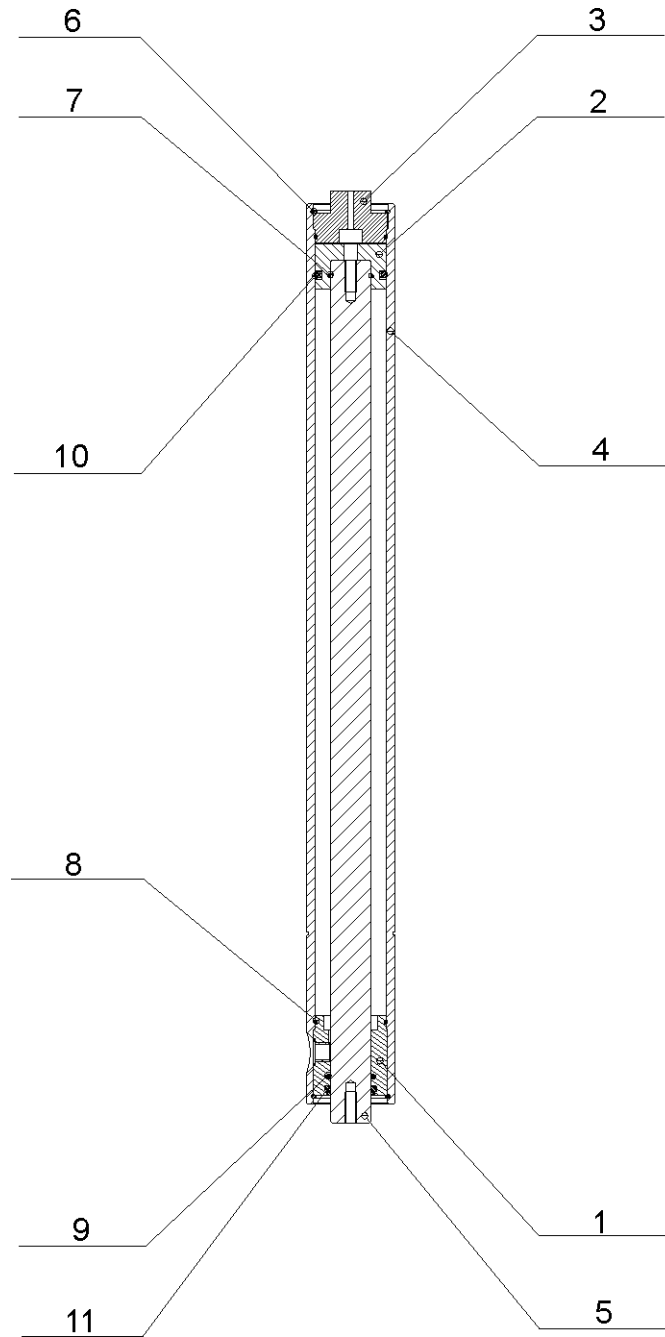
Pos.	Ord. Number	Name	Pcs.
1		Vertical rollers	1
2	30.2911-102	Cylinder	7
3	30.2911-103	Bar	7
4	30.2911-105	Hake	1
5	30.2911-106	Forehead	1
6	30.2911-301	Listel	2
7	30.2911-308	Hake	1
8	90.001.25.054	Screw M10x60 DIN 912	4
9	90.002.2D.029	Screw M6x8 DIN 913	7
10	90.011.27.012	Screw M8x16 DIN 7991	12
11	90.154.50.011	Washer d20x28x1 DIN 988	14
12	95.001.007	Bearing 6004 2RS	14



Main vice

Main vice

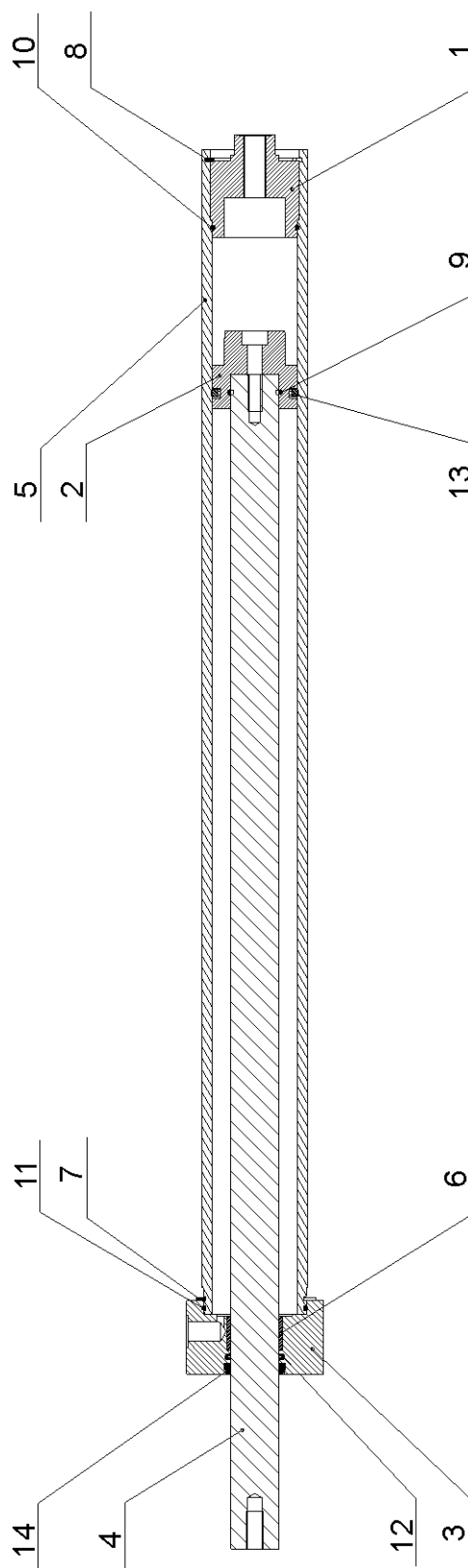
Pos.	Ord. Number	Name	Pcs.
1	30.0809-010	Splice plate	2
2	30.2011-010	Splice plate	1
3	30.2011-011	Screwing	1
4	30.2903-001	Pedestal	1
5	30.2903-002	Pillar	1
6	30.2903-003	Jaw	1
7	30.2903-004	Guiding bar	2
8	30.2903-005	Listel	2
9	30.2903-006	Jaw	1
10	30.2903-007	Cover	1
11	30.2903-008	Tube	1
12	30.2903-011	Glide	1
13	30.2903-012	Holder	1
14	30.2903-100	Display	1
15	30.2911-021	Listel	4
16	30.2911-025	Listel	2
17	30.3509-015	Distance tube	2
18	30.3514-502	Console	1
19		Cylinder	1
20	30.3709-002	Board	1
21	30.3709-003	Exchange board	1
22	30.3709-007	Vice cover	1
23	30.3709-009	Auxiliary vice jaw	1
24	30.3709-014	Frictional listel	3
25		Glasses	1
26	30.3714-401	Auxiliary jaw	1
27	30.3714-402	Guiding of the jaw	1
28	30.4303-018	Guiding bar	2
29	30.4303-021	Rod of the admeasurement	1
30	90.001.25.016	Screw M6x12 DIN 912	4
31	90.001.25.017	Screw M6x16 DIN 912	2
32	90.001.25.033	Screw M8x25 DIN 912	1
33	90.001.25.034	Screw M8x30 DIN 912	4
34	90.001.25.043	Screw M10x12 DIN 912	2
35	90.001.25.046	Screw M10x20 DIN 912	2
36	90.001.25.047	Screw M10x25 DIN 912	4
37	90.001.25.048	Screw M10x30 DIN 912	4
38	90.001.25.049	Screw M10x35 DIN 912	1
39	90.001.25.051	Screw M10x45 DIN 912	4
40	90.001.25.052	Screw M10x50 DIN 912	5
41	90.001.25.054	Screw M10x60 DIN 912	6
42	90.001.25.098	Screw M16x80 DIN 912	2
43	90.001.25.XXX	Screw M8x18 DIN 912	3
44	90.011.27.004	Screw M6x10 DIN 7991	36
45	90.011.27.XXX	Screw M5x14 DIN 7991	3
46	90.011.27.XXX	Screw M6x8 DIN 7991	12
47	90.300.0Z.XXX	Cylindrical pin 12x60 DIN 6325	2
48	90.300.0Z.XXX	Cylindrical pin 6x22 DIN 6325	1
49	95.710.001	Bush 40x60	1
50	95.800.021	Retaining ring Ø62 DIN 471	1
51	96.082.002	Sealing ring CU 13/17	4



Clamping cylinder

Clamping cylinder

Pos.	Ord. Number	Name	Pcs.
1	30.1807-104	Supply	1
2	30.2007-302	Piston	1
3	30.2007-304	Cover	1
4	30.6007-101	Vice cylinder	1
5	30.6007-105	Piston rod	1
6	95.801.009	Retaining ring Ø52 DIN 472	2
7	96.001.007	O ring 25x2	1
8	96.001.013	O ring 45x2	2
9	96.002.014	O ring 28x3	1
10	96.020.005	Q ring	1
11	96.060.003	Wiping ring 28x36	1



Cylinder of the feeder

Cylinder of the feeder

Pos.	Ord. Number	Name	Pcs.
1	30.1807-103	Rear cover	1
2	30.1807-105	Piston	1
3	30.2007-101	Cover	1
4	30.2007-105	Piston rod	1
5	30.3507-101	Cylinder	1
6	95.700.005	CU case 28x20	1
7	95.800.020	Retaining ring Ø60 DIN 471	1
8	95.801.XXX	Retaining ring Ø55 DIN 472	1
9	96.001.007	O ring 25x2	1
10	96.001.013	O ring 45x2	1
11	96.001.014	O ring 55x2	1
12	96.002.014	O ring 28x3	1
13	96.020.005	Q ring	1
14	96.060.003	Wiping ring 28x36	1

