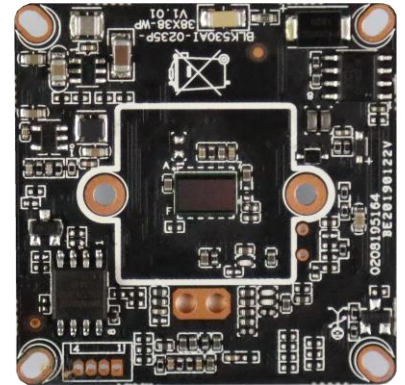


IVG-85X20PS-SV

2.0M Black light illumination License plate identification Module

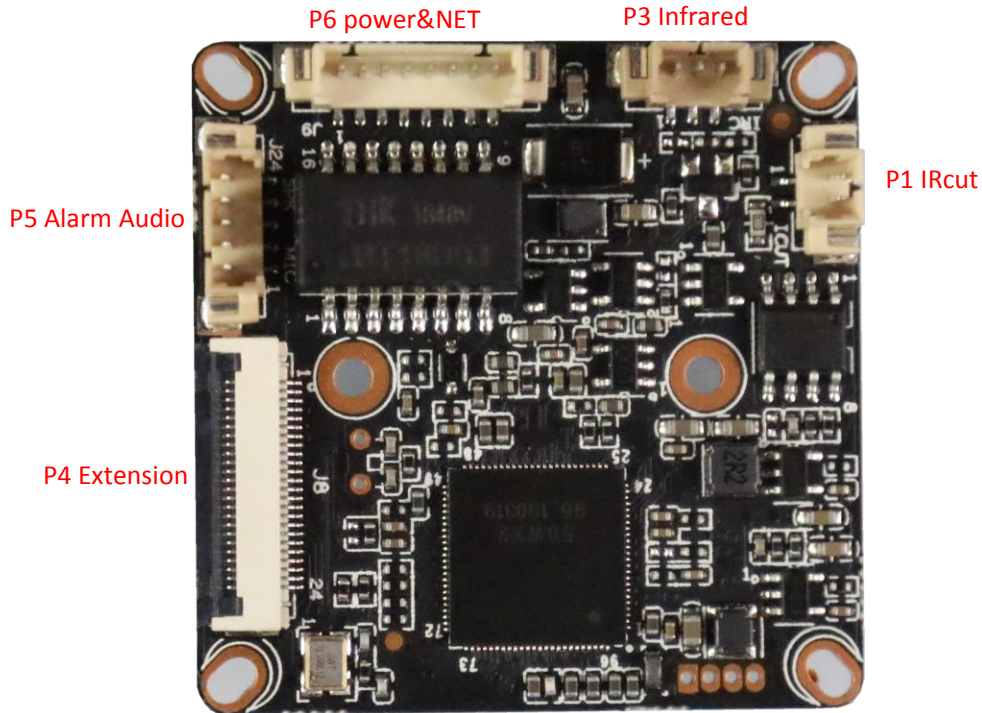
Features:

- 1080P HD resolution, Black light illumination, clear and fine images;
- Support 2D/3D noise reduction, digital wide dynamic;
- Advanced H.265AI/H.265+ (Compatible with H.265/H.264) video compression, Super low rate, high definition quality of image;
- Professional anti-lightning, conform to GB/T17626.5 and IEC61000-4-5.
- Support ONVIF; access third party;
- Support License plate recognition algorithm;
- Provide vehicle license plate recognition module matching debugging tools
- Support various mobile monitoring (iPhone, Android);
- Provide web、CMS、center platform management software MYEYE, provide SDK development
- Support cloud technology, easy to achieve network penetration, fro in-line and alarm information pushed



Parameters:

Model	IVG-85X20PS-SV
System structure	Embedded RTOS, dual-core 32bit DSP (XM550AI), pure hard compression, watch dog
Sensor	2.0M 1/2.9" SC307E Black light illumination CMOS sensor, color 0.0001Lux@F1.2, black/white 0.0001Lux@F1.2
Video compression	H.265AI/H.265+ (Compatible with H.265/H.264), support dual stream, AVI; 0.1M~8Mbps variable; 1~30f/s variable
Image output	Main stream: 1920*1080@25fps, 1280*720@25fps; sub-stream: 704*576@25fps;
Shutter	1/50(1/60)s to 1/10,000s
Lens	N/A
Day and night	Support IR-CUT, IR-CUT coil has an internal resistance of 20 ohms, the power-on time is less than 200ma, and the voltage is 3.5V-6V
Noise reduction	Support 2D/3D
Wide dynamic	Support digital
Auto iris	N/A
Audio compression	G.711, support bidirectional talk, audio&video synchronization
Audio interface	1ch input, level: 2Vp-p, impedance: 1kΩ, support sound pick-up input; 1ch output, impedance: 16Ω, 30mw, support microphone
Network interface	1*RJ45 10/100M adaptive Ethernet port; support RTSP/FTP/DHCP/NTP/UPnP etc
Extension interface	SD card, ALARM1/1, RTC, RESET, USB WIFI
Singal interface	One photo resistance interface, one IR-CUT interface, support photo resistance signal and IR-CUT links to IR
PTZ	N/A
Motor interface	N/A
Alarm I/O	1/0 (support alarm input and video link to background)
WIFI interface	N/A
Reset interface	N/A
SD Card	N/A
Reliability	Comprehensive lightning protection, 7 * 24 hours 65 °C high temperature stable and reliable testing
Intelligence analysis	License plate recognition.
Other function	Supports the license plate recognition module supporting tools, Provide a complete license plate recognition SDK development kit, Support the identification of regional division
ONVIF	Support
Mobile monitoring	Support multiple mobile monitoring (iOS, Android)
Power	DC12V/2A input, power consumption: ≤3W,
Dimension	38mm*38mm
Other	Support POE power supply, not support any custom. The drive voltage of the light board is at 3.3V



sign	Socket	Specific No	Interface Description	Function
P1	J5	1	IC-CUT	IRCUT output
		2	IC-CUT	IRCUT output
P3	J6	1	LED_CTRL	GPIO/PWM
		2	GND	GND
		3	Pwm	IRIN
P4	J8	1	3.3V	3.3V
		2	3.3V	3.3V
		3	GND	GND
		4	RTC_BAT	ALARM_IN1
		5	ALARM_IN1	KET_SET
		6	KET_SET	LED_CTRL
		7	LED_CTRL	ALARM_OUT
		8	ALARM_OUT	GND
		9	GND	WIFI_DATA0
		10	WIFI_DATA0	WIFI_PDN
		11	WIFI_PDN	GND
		12	GND	WIFI_CMD
		13	WIFI_CMD	GND
		14	GND	WIFI_CLK
		15	WIFI_CLK	GND
		16	GND	SD_DATA3
		17	SD_DATA3	ALARM_IN1
		18	SD_DATA2	SD_DATA2

		19	SD_DATA1	SD_DATA1
		20	SD_DATA0	SD_DATA0
		21	GND	GND
		22	SD_CMD	SD_CMD
		23	GND	GND
		24	SD_CLK	SD_CLK
P5	J24	1	MICN	MICN
		2	MICP	MICP
		3	ALARM_IN	ALARM_IN
		4	SPKP	SPKP
		5	SPKN	SPKN
P6	J9	1		
		2	LED1/PHYAD1+	LED
		3	ETHRX-	Ethernet signal
		4	ETHRX+	Ethernet signal
		5	ETHTX-	Ethernet signal
		6	ETHTX+	Ethernet signal
		7	GND	GND
		8	12V	12V