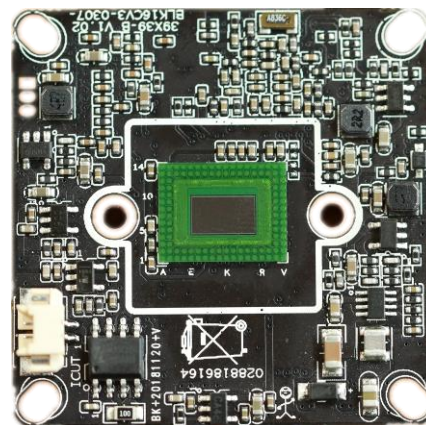


IVG-85H20PYA-S

2.0M Black light illumination H.265 IP Camera Module

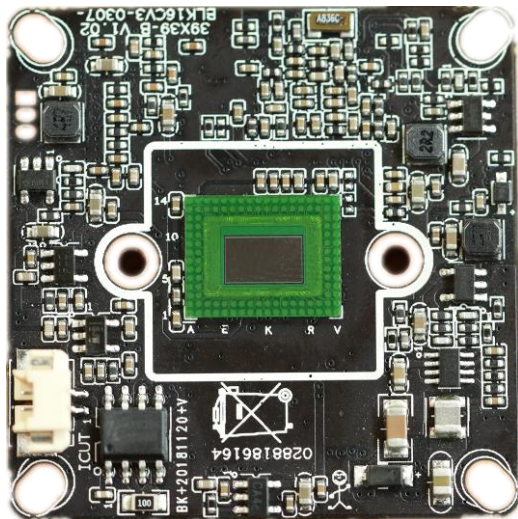
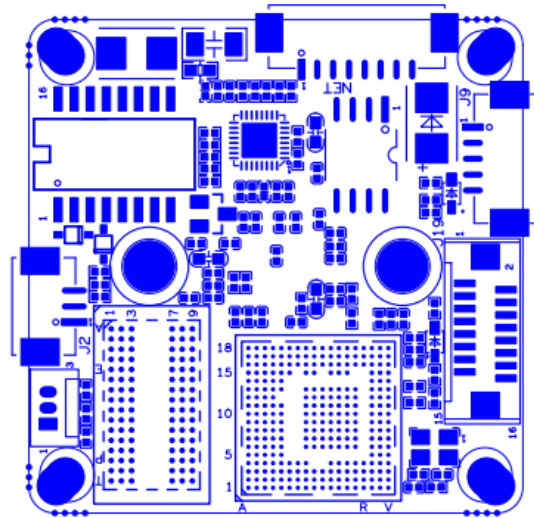
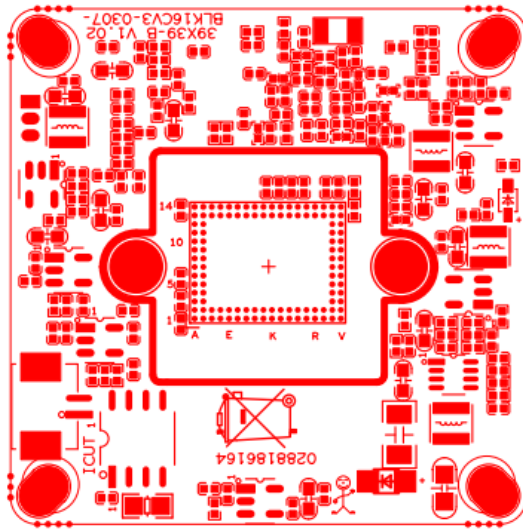
Features:

- 1080P HD Black light illumination resolution,clear and fine images;
- Support 2D/3D noise reduction,digital wide dynamic;
- Advanced H.265AI/H.265+ (Compatible with H.265/H.264) video compression,Super low rate,high definition quality of image;
- Professional anti-lightning,conform to GB/T17626.5 and IEC61000-4-5.
- Support ONVIF;access third party;
- Support various mobile monitoring(iPhone,Android);
- Provide web、CMS、center platform management software MYEYE,provide SDK development
- Support cloud technology,easy to achieve network penetration,fro in-line and alarm information pushed

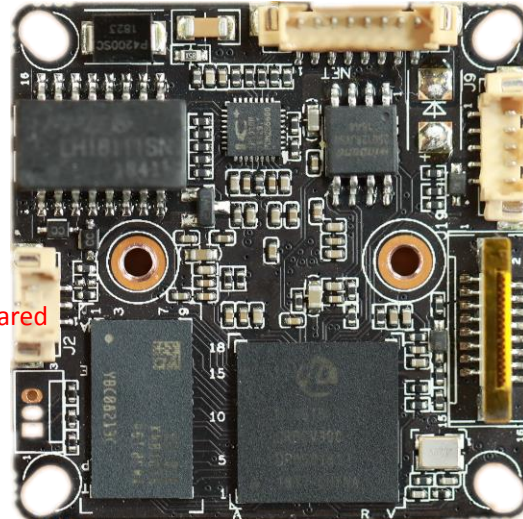


Parameters:

Model	IVG-85H20PYA-S
System structure	Embedded RTOS,dual-core 32bit DSP(Hi3516CV300),pure hard compression ,watch dog
Sensor	2.0M 1/2.8" IMX307 Black light illumination CMOS sensor,color 0.0001Lux@F1.2,black/white 0.0001Lux@F1.2
Video compression	H.265AI/H.265+ (Compatible with H.265/H.264) support dual stream,AVI;0.1M~8Mbps variable;1~30f/s variable
Image output	Main stream: 1920*1080@25fps,1280*720@25fps; sub-stream: 704*576@25fps;
Shutter	1/50(1/60)s to 1/10,000s
Lens	N/A
Day and night	Support IR-CUT, IR-CUT coil has an internal resistance of 20 ohms, the power-on time is less than 200ma, and the voltage is 3.5V-6V
Noise reduction	Support 2D/3D
Wide dynamic	Support digital Wide dynamic
Auto iris	N/A
Audio compression	G.711,support bidirectional talk,audio&video synchronization
Audio interface	1ch input,level:2Vp-p,impedance:1kΩ,support sound pick-up input;1ch output,impedance:16Ω,30mw,support microphone
Network interface	1*RJ45 10/100M adaptive Ethernet port;support RTSP/FTP/PPPOE/DHCP/DDNS/NTP/UPnP etc
Extension interface	1*USB,support WIFI/3G,support SD; 1ch Alarm output; reset key; 1ch Alarm input or LED panel; RTC battery
Singal interface	One photo resistance interface,one IR-CUT interface ,support photo resistance signal and IR-CUT links to IR
PTZ	N/A
Motor interface	N/A
Alarm I/O	1/0 (support alarm input and video link to background)
WIFI interface	N/A
Reset interface	N/A
SD Card	N/A
Reliability	Comprehensive lightning protection, 7 * 24 hours 65 °C high temperature stable and reliable testing
Intelligence analysis	Supporting human detection and tripping line detection, and supports intelligent functions such as number statistics, etc.
Other function	Support WEB,OSD,live video transmission,motion detect and IO alarm,front-end storage/playback/download, and center reminder and image linkage,support JPEG capture; united remote client monitoring sofaware、MYEYE;perfect SDK;
ONVIF	Support
Mobile monitoring	Support multiple mobile monitoring (iOS、Android)
Power	DC12V/2A input, power consumption:≤3W,
Dimension	38mm*38mm
Other	Support POE power supply, not support any custom, The drive voltage of the light board is at 3.3V



P2 IRcut



P1 Power&NET

P6 Alarm Audio

P3 Infrared

P7 Extension

sign	Socket	Specific No	Interface Description	Function
P2	J4	1	IC-CUT	IRCUT output
		2	IC-CUT	IRCUT output
	J1	1	UATRO_RXD	
		2	UATRO_TXD	
		3	GND	GND
P3	J2	1	GPIO6_6/PWM2	GPIO/PWM
		2	GND	GND
		3	IRC_GPIO80	IRIN
P7	J19	1	SDIO1_CCLK_OUT	SD_CLK
		2	SDIO1_CCMD	SD_CMD
		3	SDIO1_CDATA0	SD_DATA0
		4	SDIA1_CDATA1	SD_DATA1
		5	SDIA1_CDATA2	SD_DATA2

		6	SDIA1_CDATA3	SD_DATA3
		7	ALARM_IN2	LED_CTRL
		8	GND	GND
		9	KEY_GPIO8_4	Key-set
		10	VBAT	RTC RTC battery input
		11	GND	GND
		12	ALARM_OUT	ALARM_OUT
		13	USB_DM	USB_DM
		14	USB_DP	USB_DP
		15	VCC	+5V
		16	USB_CONTROL	USB_CONTRL
P6	J9	1	AC_OUTL	AC_OUT
		2	AC_LINEL	MIC_P
		3	GND	GND
		4	ALARM_IN1	ALARM_IN
		5	GND	GND
P1	J3	1	LED/PHY_ADO	LED
		2	LED/PHY_AD1	LED
		3	ETHTX+	Ethernet signal
		4	ETHTX-	Ethernet signal
		5	ETHRX+	Ethernet signal
		6	ETHRX-	Ethernet signal
		7	GND	GND
		8	12V	12V DC input