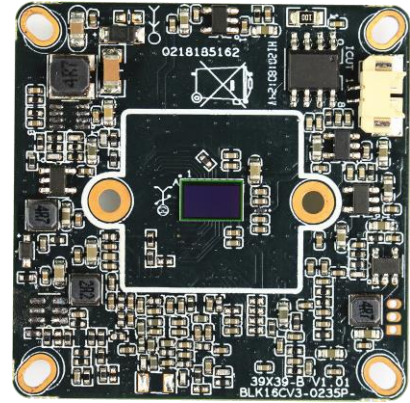


## IPG-80H20PS-S

2.0M H.265 IP Camera Module

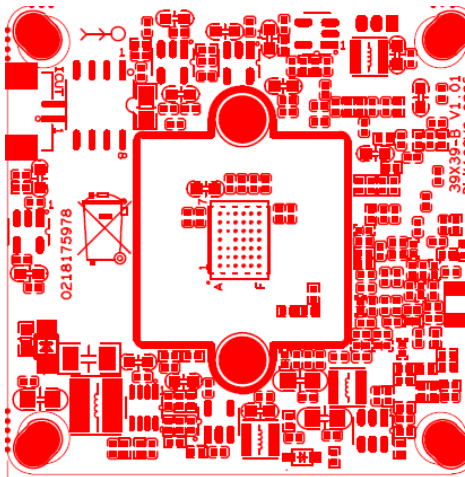
### Features:

- 1080P HD resolution,clear and fine images;
- Support 2D/3D noise reduction,digital wide dynamic;
- Advanced H.265/H.264 video compression,Super low rate,high definition quality of image;
- Professional anti-lightning,conform to GB/T17626.5 and IEC61000-4-5.
- Support ONVIF;access third party;
- Support various mobile monitoring(iPhone,Android);
- Provide web、CMS、center platform management software MYEYE,provide SDK development
- Support cloud technology,easy to achieve network penetration,from in-line and alarm information pushed

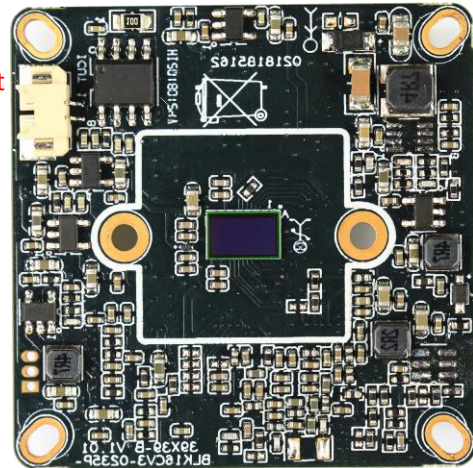


### Parameters:

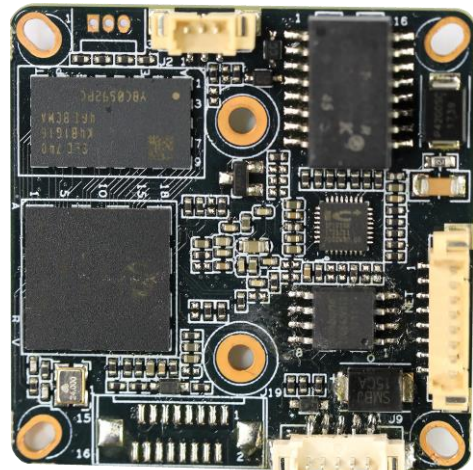
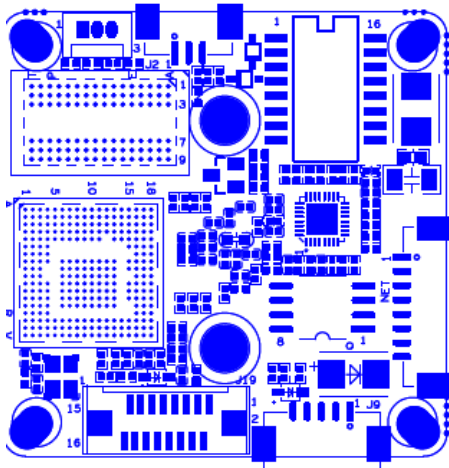
Model	IPG-80H20PS-S
System structure	Embedded RTOS,dual-core 32bit DSP(Hi3516CV300),pure hard compression ,watch dog
Sensor	2.0M CMOS sensor ,color 0.1Lux@F1.2,black/white 0.01Lux@F1.2
Video compression	H.265/H.264,support dual stream,AVI;0.1M~8Mbps variable;1~30f/s variable
Image output	Main stream: 1920*1080@25fps,1280*720@25fps; sub-stream: 704*576@25fps;
Shutter	1/50(1/60)s to 1/10,000s
Lens	N/A
Day and night	Support IR-CUT, IR-CUT coil has an internal resistance of 20 ohms, the power-on time is less than 200ma, and the voltage is 3.5V-6V
Noise reduction	Support 2D/3D
Wide dynamic	Support digital
Auto iris	N/A
Audio compression	G.711,support bidirectional talk,audio&video synchronization
Audio interface	1ch input,level:2Vp-p,impedance:1kΩ,support sound pick-up input;1ch output,impedance:16Ω,30mw,support microphone
Network interface	1*RJ45 10/100M adaptive Ethernet port;support RTSP/FTP/PPPOE/DHCP/DDNS/NTP/UPnP etc
Extension interface	N/A
Singal interface	One photo resistance interface,one IR-CUT interface ,support photo resistance signal and IR-CUT links to IR
PTZ	N/A
Motor interface	N/A
Alarm I/O	1/0 (support alarm input and video link to background)
WIFI interface	N/A
Reset interface	N/A
SD Card	N/A
Reliability	Comprehensive lightning protection, 7 * 24 hours 65 °C high temperature stable and reliable testing
Intelligence analysis	N/A
Other function	Support WEB,OSD,live video transmission,motion detect and IO alarm,front-end storage/playback/download, and center reminder and image linkage,support JPEG capture; united remote client monitoring sofaware、MYEYE;perfect SDK;
ONVIF	Support
Mobile monitoring	Support multiple mobile monitoring (iOS、Android)
Power	DC12V/2A input, power consumption:≤3W,
Dimension	38mm*38mm
Other	Support POE power supply, not support any custom, The drive voltage of the light board is at 3.3V



P3 IRcut



P3 Infrared



P1 Power Ethernet

P6 Alarm Audio

sign	Socket	Specific No	Interface Description	Function
P1	J3	1	LED/PHY_AD0	LED
		2	LED/PHY_AD1	LED
		3	ETHTX+	Ethernet signal
		4	ETHTX-	Ethernet signal
		5	ETHRX+	Ethernet signal
		6	ETHRX-	Ethernet signal
		7	GND	GND
		8	12V	12V DC input
P2	J19	1	SD_CLK	SD_CLK
		2	SD_CMD	SD_CMD
		3	SD_DATA0	SD_DATA0
		4	SD_DATA1	SD_DATA1
		5	SD_DATA2	SD_DATA2
		6	SD_DATA3	SD_DATA3

		7	LED_CTRL	LED_CTRL
		8	GND	GND
		9	Key-set	Key-set
		10	BAT	RTC RTC battery input
		11	GND	GND
		12	ALARM_OUT	ALARM_OUT
		13	USB_DM	USB_DM
		14	USB_DP	USB_DP
		15	+5V	+5V
		16	USB_CONTRL	USB_CONTRL
P3	J2	1	Infrared input	Infrared input
		2	GND	GND
		3	GPIO	GPIO
P3	J4	1	BOUT	IRcut
		2	AOUT	IRcut
P5	J6	1	UART_RX	
		2	UART_TX	
		3	GND	GND
P6	J9	1	AC_OUT	AC_OUT
		2	AC_IN	MIC_P
		3	GND	GND
		4	ALARM_GPIO	ALARM_IN
		5	GND	GND