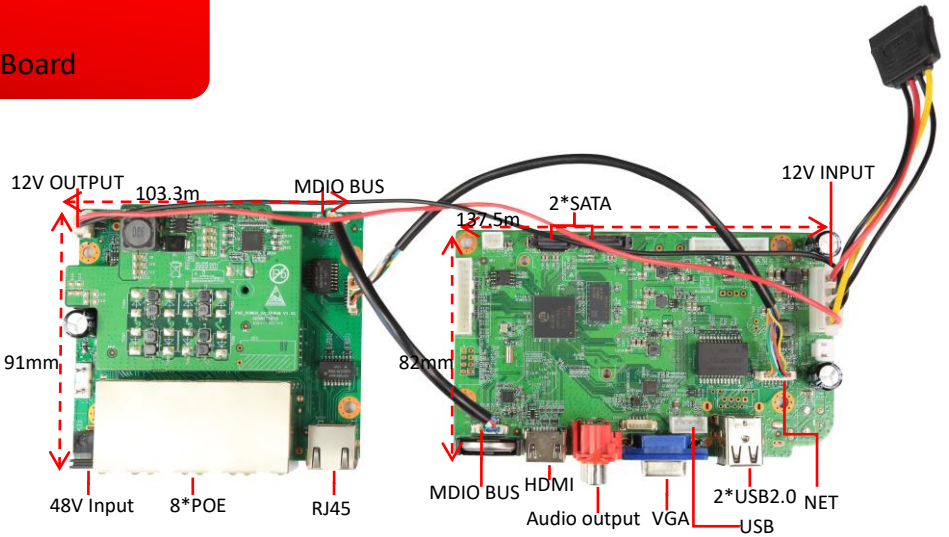


NBD8908R-PL
8ch 5MP POE H.265 NVR Board

Feature:

- Support HDMI VGA HD output;
- Support ONVIF;access third party;
- Support web, CMS, center platform management software MYEYE, provide SDK development;
- Support multiple cloud technology, network penetration, alarm information pushed to your phone and other functions;
- Support multiple network services (support DHCP, FTP, DNS, DDNS, NTP, UPNP, EMAIL, IP searches, Alarm Center, etc.);



Parameters:

Model: NBD8908R-PL

	Model	NBD8908R-PL
System	Main processor	Hi3536D
	Operating System	Embedded Linux
	System resources	Simultaneous multi-channel real-time recording, playback, network operation, USB backup
Interface	Operator interface	16-bit true color graphic menu operation interface, support mouse operation
	Preview	1/4/9
Video	Video input (IP)	8*5M/16*5M/8*1080P
	Access bandwidth	96Mbps
	Forwarding bandwidth	96Mbps
	Video compression	H.265/H.264
	Display quality	Max:1920*1080
	Playback quality	5M/1080P
	Decode	1*5M/1*5M/2*1080P
	VR	Unsupport
Audio	Audio compression	G.711A
	Intercom	Unsupport
Record & playback	Recording mode	Manual>Alarm>Dynamic Detection>Timing
	Local playback	1*5M/1*5M/2*1080P
	Search mode	Search by Time/Calendar/Event/Channel
	Record storage	HDD、Network
	Backup mode	Network backup, USB hard disk, USB burner, SATA burner
External interface	Video output	1ch VGA, 1ch HDMI HD output
	Audio I/O	0/1
	Alarm I/O	0/0
	Network interface	1*RJ45 10M/100M Adaptive Ethernet port, 8* POE ports
	USB interface	2*USB2.0 ports
	HDD	2*SATA(Up to 8TB for each disk)
	ESATA	No
Other	Serial interface	No
	ONVIF	Support
	Power supply	Input: DC48V,PoE Output: 15.4W
	Power Consumption	<10W(Without HDD)
	Work environment	Temperature:0℃-+55℃ , Humidity:10%—90%RH , Atm:86kpa—106kp
	Dimension	137.5mm*82mm+103.3mm*91mm
	Weight	A total of about 218g