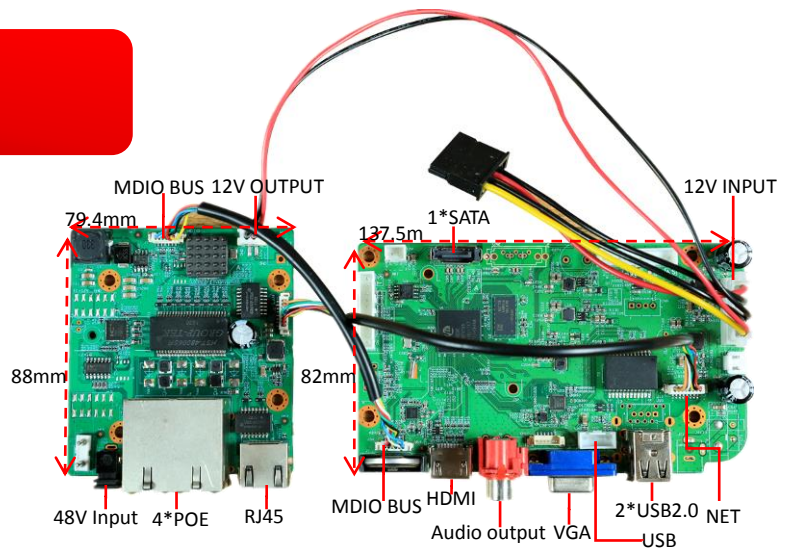


## NBD8904R-PL

### 4ch 1080P POE H.265 NVR Board

**Feature:**

- Support HDMI VGA HD output;
- Support ONVIF;access third party;
- Support web, CMS, center platform management software MYEYE, provide SDK development;
- Support multiple cloud technology, network penetration, alarm information pushed to your phone and other functions;
- Support multiple network services (support DHCP, FTP, DNS, DDNS, NTP, UPNP, EMAIL, IP searches, Alarm Center, etc.);


**Parameters:**
**Model: NBD8904R-PL**

|                    | Model                 | NBD8904R-PL   |
|--------------------|-----------------------|---|
| System             | Main processor        | Hi3536D   |
|                    | Operating System      | Embedded Linux  |
|                    | System resources      | Simultaneous multi-channel real-time recording, playback, network operation, USB backup |
| Interface          | Operator interface    | 16-bit true color graphic menu operation interface, support mouse operation             |
|                    | Preview               | 1/4   |
| Video              | Video input (IP)      | 4*1080P   |
|                    | Access bandwidth      | 24Mbps  |
|                    | Forwarding bandwidth  | 24Mbps  |
|                    | Video compression     | H.265/H.264   |
|                    | Display quality       | Max:1920*1080   |
|                    | Playback quality      | 1080P   |
|                    | Decode                | 1*1080P   |
|                    | VR                    | Unsupport   |
| Audio              | Motion detection      | Support(depend on camera)   |
|                    | Audio compression     | G.711A  |
| Record & playback  | Intercom              | Unsupport   |
|                    | Recording mode        | Manual>Alarm>Dynamic Detection>Timing   |
|                    | Local playback        | 1*1080P   |
|                    | Search mode           | Search by Time/Calendar/Event/Channel   |
|                    | Record storage        | HDD、Network   |
| External interface | Backup mode           | Network backup, USB hard disk, USB burner, SATA burner                                  |
|                    | Video output          | 1ch VGA, 1ch HDMI HD output   |
|                    | Audio I/O             | 0/1   |
|                    | Alarm I/O             | 0/0   |
|                    | Network interface     | 1*RJ45 10M/100M Adaptive Ethernet port, 4* POE ports                                    |
|                    | USB interface         | 2*USB2.0 ports  |
|                    | HDD                   | 1*SATA(Up to 8TB for each disk)   |
|                    | ESATA                 | No  |
| Other              | Serial interface      | No  |
|                    | ONVIF                 | Support   |
|                    | Power supply          | Input: DC48V,PoE Output: 15.4W  |
|                    | Power Consumption     | <10W(Without HDD)   |
|                    | Work environment      | Temperature:0°C-+55°C , Humidity:10%—90%RH , Atm:86kpa—106kp                            |
|                    | Dimension             | 137.5mm*82mm+88mm*79.4mm  |
| Weight             | A total of about 156g |   |