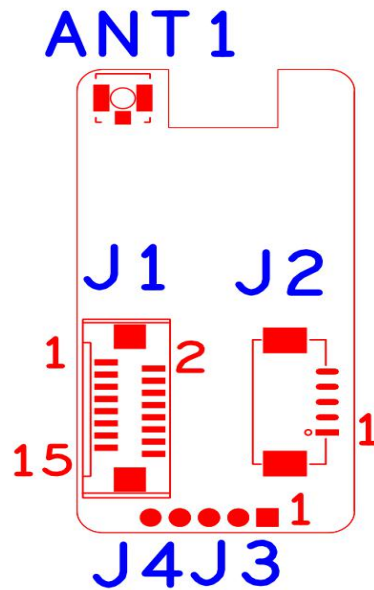


Interface description table

Socket		Specific No	Interface Description	
P1	J5	1	IR-CUT	IR-CUT A OUT
		2	IR-CUT	IR-CUT B OUT
P6	J4	1	GND	GND
		2	UATRO_TXD	UATRO_TXD
		3	UATRO_RXD	UATRO_RXD
		4	BOOTSEL_0	BOOTSEL_0
P5	J6	1	PWM	Soft infrared interface
		2	LED_CTRL	White light interface
		3	ADC1_IN	Infrared light signal control
		4	GND	GND
P3	J9	1	KEY_SET	KEY_SET
		2	LED/PHY_AD1	LED/PHY_AD1
		3	ETHTX+	ETHTX+
		4	ETHTX-	ETHTX-
		5	ETHRX+	ETHRX+
		6	ETHRX-	ETHRX-
		7	GND	GND
		8	12V 输入	MIC
P2	J24	1	MICN	MIC
		2	MICP	GND
		3	GND	GND

		4	SPKP	loudspeaker
		5	SPKN	loudspeaker
P4	J25	1	3V3	3V3
		2	WIFI_DN	WIFI DATA
		3	WIFI_DP	WIFI DATA
		4	GND	GND



Socket	Interface Description	Function			
J2	5P 1.25mm WIFI extension socket	1:GND	2:USB_DP	3:USB_DM	4:+3.3V
		5:USB_CTRL			
J1	16P double row FPC WIFI extension socket	1:NC	2:NC	3:NC	4:NC
		5:NC	6:NC	7:NC	8:GND
		9:NC	10:NC	11:GND	12:NC
		13:USB_DM	14:USB_DP	15:+3.3V	16:USB_CTRL
ANT2	IPEX antenna interface				
J4	Reserve pin header to expand WIFI interface				
J3	Reserve pin header to expand WIFI interface				