

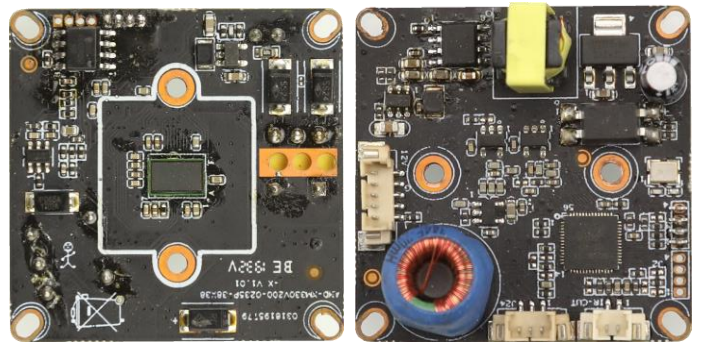
XPG-53X20PSC-C
1080P 12V XPOE Camera Module

Key features:

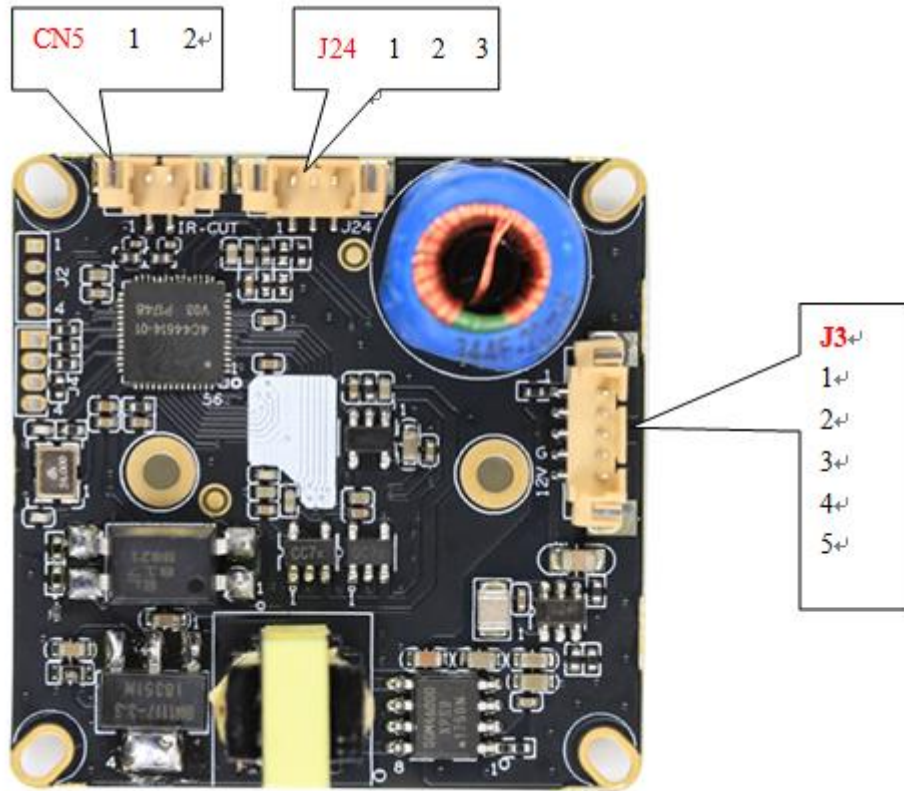
- 1080P FHD resolution, the image is more clear and delicate;
- Output diagram without delay;
- Long transmission distance, up to 50 meters;
- Support XPOE coaxial upgrade, version upgrade convenient and efficient;
- NTSC&PAL 2 in 1, easy to switch through back-end;
- XPOE network port power supply

Model:

XPG-53X20PSC-C

Parameters:


Specifications	XPG-53X20PSC-C
ISP	XM330V200
Sensor	1/2.8 inch SC2239 sensor
Signal format	XPOE
Video Resolution	PAL/NTSC : 1920*1080
Minimum Illumination	color: 0.01Lux@ (F1.2, AGC ON) , 0Lux with IR Black & White: 0.001Lux@ (F1.2, AGC ON) , 0Lux with IR
Alarm Interface	can be connected with Passive Infrared Detection devices(PIR)
Photosensitive Resistance	1 photosensitive resistance interface, support the photosensitive resistor input signal and image, IR-CUT, infrared lamp linkage
Shutter	1/50(1/60) seconds to 1/10,000 seconds
Day and Night Function	Support IR-CUT
Lens Parameters	C/CS interface, M12 lens optional
Video output	1080P@25fps
Power	XPOE (12V)
Temperature and Humidity	- 10 °C ~ 60 °C, humidity is less than 90% (no condensation)
Consumption	<5W
Size	Standard 38*38 positioning hole
Remarks	Support XPOE coaxial, XPOE upgrade



Socket	Specific No.	Interface Description	Function
J24	1	IRC	Infrared led Input
	2	IR-GND	IR-Ground
	3	ALARM_IN1	ALARM input (Reserved)
J3	1	LED+	Led+
	2	GND	Video Ground
	3	VIDEO	Video output
	4	GND	12V Ground
	5	12V	12V DC input
CN5	1	ICR control signal	output
	2	ICR control signal	output