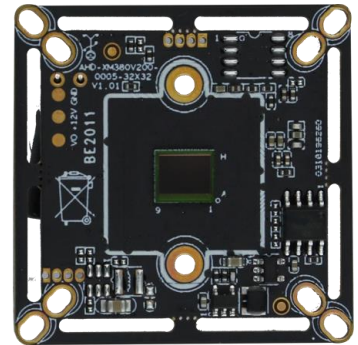


**XAG-53X80PT-YR**

8MP Analog Video dual-light Camera Module

**Key features:**

- 8MP FHD resolution, the image is more clear and delicate;
- Zero-latency data transmission, full real-time, high fidelity;
- Long transmission distance, coaxial transmission up to 500 meters;
- Support UTC, enable OSD by the back-end;
- Support coaxial upgrade, version upgrade convenient and efficient;
- Support XVI/AHD DVR;
- High-definition quality products with competitive price.
- infrared/white light dual-light intelligent switching

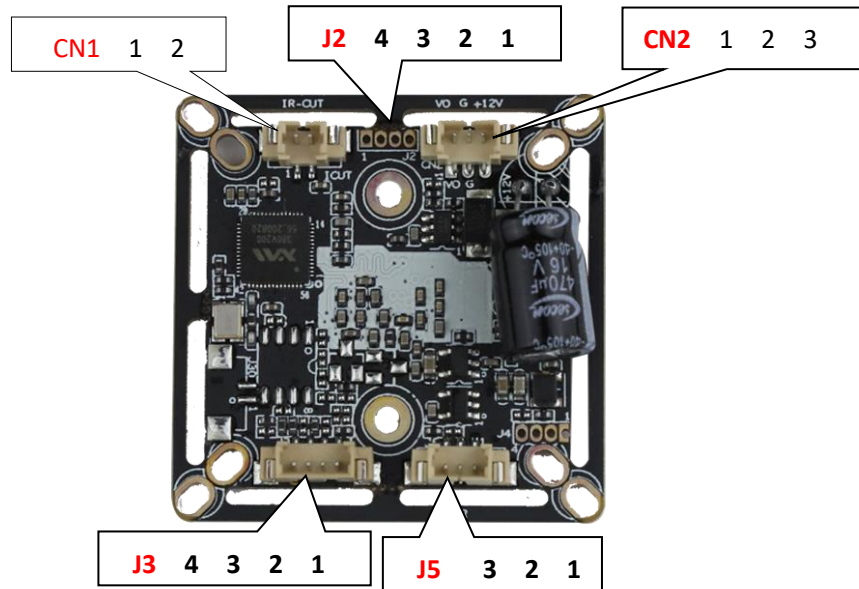

**Model:**

XAG-53X80PT-YR

**Parameters:**

| Specifications            | XAG-53X80PT-YR   |
|---------------------------|--|
| ISP                       | XM380V200  |
| Sensor                    | 1/2.5 inch CMOS sensor   |
| Signal format             | XVI/AHD  |
| Video Resolution          | PAL/NTSC : 3840*2160   |
| Minimum Illumination      | color: 0.01Lux@ (F1.2, AGC ON) , 0Lux with IR  |
|                           | Black & White: 0.001Lux@ (F1.2, AGC ON) , 0Lux with IR   |
| Photosensitive Resistance | 1 photosensitive resistance interface, support the photosensitive resistor input signal and image, IR-CUT, infrared lamp linkage |
| Shutter                   | 1/50(1/60) seconds to 1/10,000 seconds   |
| Day and Night Function    | Support IR-CUT   |
| Lens Parameters           | C/CS interface, M12 lens optional  |
| Video output              | XVI/AHD@8MP  |
| Power                     | DC12V±10%  |
| Temperature and Humidity  | - 10 °C ~ 60 °C, humidity is less than 90% (no condensation)   |
| Consumption               | <5W  |
| Size                      | Standard 32*32 positioning hole, compatible with 38*38 hole  |
| Remarks                   | Support UTC,coaxial upgrade  |

## AHD-XM380V200-0005-32X32-V1\_01 Interface Description



### Detailed Definition:

| Socket | Specific No. | Interface Description | Function              |
|--------|--------------|-----------------------|-----------------------|
| J3     | 1            | GND                   | Ground                |
|        | 2            | ADC2VIN               | System Switch         |
|        | 3            | MODE_N/P              | White light CTRL      |
|        | 4            | ADC2VIN               | System Switch         |
| CN1    | 1            | DRIOUT1               | IRCUT                 |
|        | 2            | DRIOUT2               |                       |
| J5     | 1            | NC                    | NC                    |
|        | 2            | GND                   | Ground                |
|        | 3            | LED1                  | Infrared drive signal |
| CN2    | 1            | CVBS                  | Video out             |
|        | 2            | GND                   | Ground                |
|        | 3            | +12V                  | 12V input             |
| J2     | 1            | ALARM_IN1             | PIR signal input      |
|        | 2            | GND                   | Ground                |
|        | 3            | 3.3V                  | 3.3V input            |
|        | 4            | GND                   | Ground                |