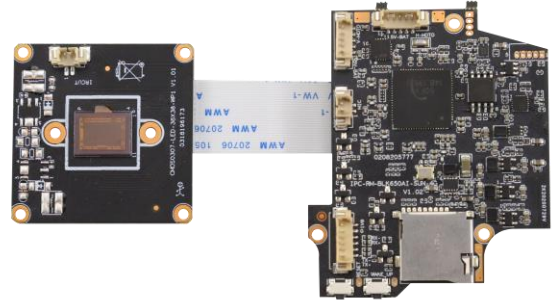


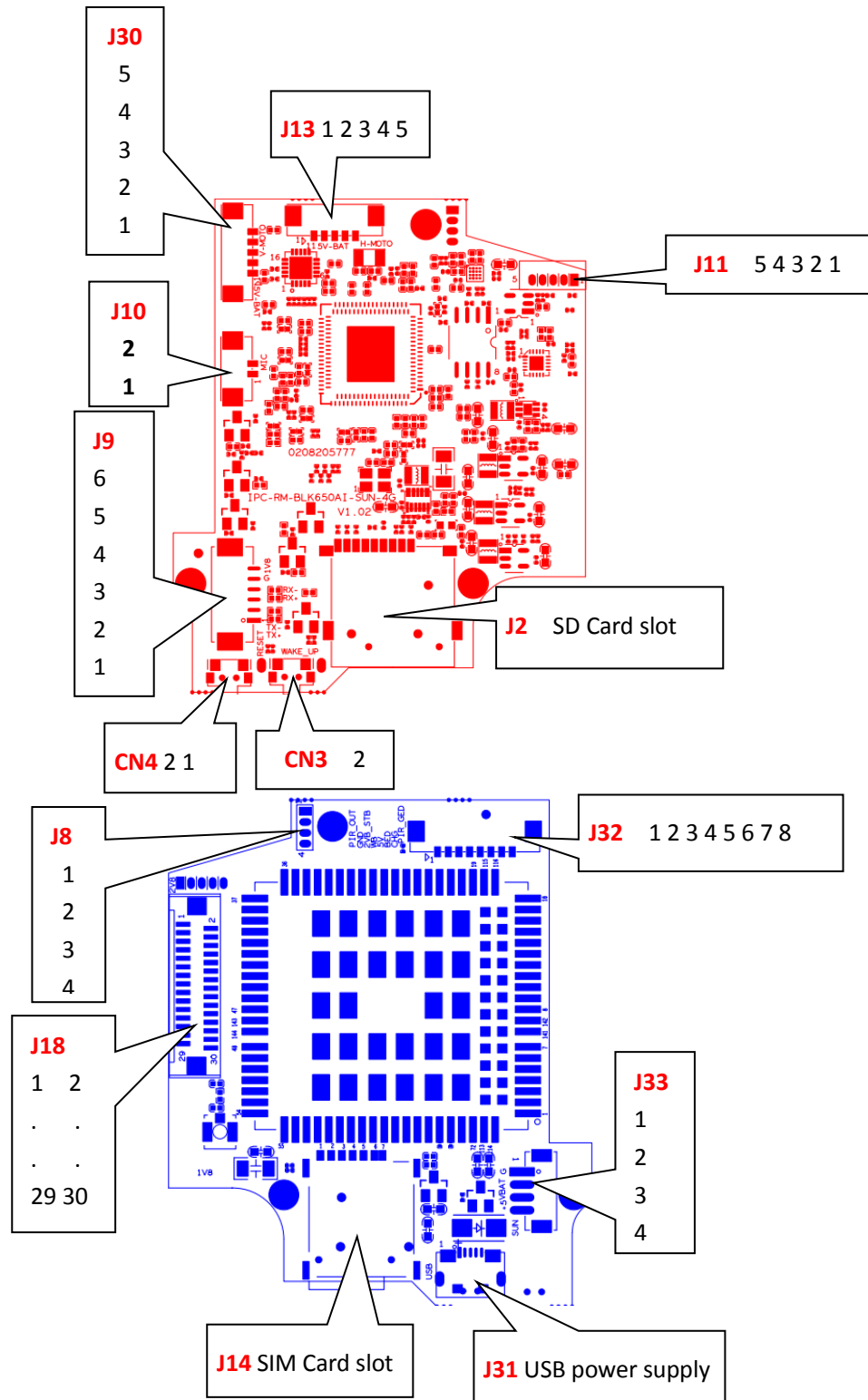
**LPG-QG2-4GS**
**2.0M 4G Low Power Solar Dome Camera module**
**Features:**

- 1080p resolution, clear and delicate image
- Support PIR human infrared sensing and microwave dual detection
- Support app remote wake-up
- DC5V power supply ; Support solar power supply duration (need external solar power panel)
- Support 4G connections
- Built in 4G flow card
- Support 2D/3D noise reduction,digital wide dynamic;
- Advanced H.265X video compression,Super low rate,high definition quality of image;
- Professional anti-lightning,conform to GB/T17626.5 and IEC61000-4-5。
- Support mobile phone monitoring(iOS, Android);
- Support cloud technology,easy to achieve network penetration,fro in-line and alarm


**Parameters:**

Model	LPG-QG2-4GS
System structure	dual-core 32-bit DSP,pure hard compression ,watch dog
Sensor	2.0M 1/2.8"IMX307 CMOS sensor
Video compression	H.265X coding,support dual stream,AVI;0.1M~8Mbps variable
Min.Illumination	Color: 0.0001Lux @(F1.2,AGC ON); 0 Lux with IR Black/White: 0.0001 Lux @ (F1.2,AGC ON),0 Lux with IR
Image output	Main stream: 1920*1080@12fps; sub-stream: 640*360@12fps
Shutter	1/50(1/60)s to 1/10,000s
Lens	N/A
Day and night	Support IR-CUT
Noise reduction	Support 2D/3D
Wide dynamic	Support
Auto iris	N/A
Audio compression	G.711 standard compression,support two-way Bidirectional Talk,support for audio and video synchronization
Audio interface	1ch input,level:2Vp-p,impedance:1kΩ,support sound pick-up input;1ch output,impedance:16Ω,30mw,support microphone;
Network interface	N/A
Extension interface	N/A
Singal interface	one IR-CUT interface
PTZ interface	One horizontal motor interface, one vertical electrical interface
Alarm I/O	N/A
Wireless interface	1 * binding 4G card
Reset interface	Support
Storage mode	Local TF card storage, up to 128G; cloud storage
Reliability	Comprehensive lightning protection, 7 * 24 hours 65 °C high temperature stable and reliable testing
Intelligence analysis	Support PIR human infrared sensing and microwave dual detection and customizing other intelligent functions
Other function	Support cloud technology,easy to achieve network penetration,fro in-line and alarm information pushed
ONVIF	N/A
Mobile monitoring	Support multiple mobile monitoring (iOS, Android)
Power	DC5V±10%
Dimension	59.4mm*49.6mm+38mm*38mm
Other	N/A

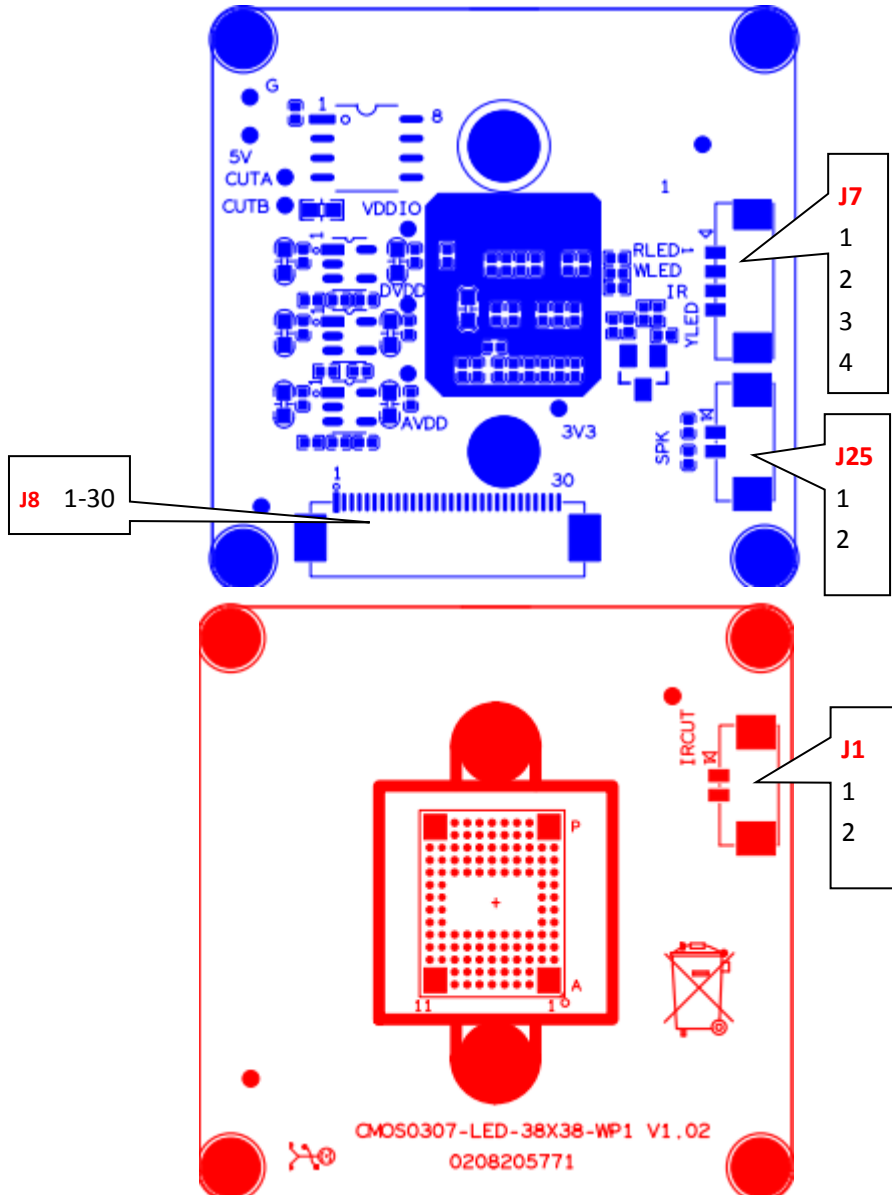
## IPC-RM-BLK650AI-SUN-4G-V1\_02 Interface description



Socket	Specific No	Interface Description	Function
J10	1	MIC_G	MIC interface
	2	MIC_IN	
J30	1	5V	Positive pole of 5V power supply
	2	OUT1	Vertical motor drive interface
	3	OUT2	
	4	OUT3	
	5	OUT4	
J13	1	5V	Positive pole of 5V power supply
	2	OUT1	Horizontal motor drive interface
	3	OUT2	
	4	OUT3	
	5	OUT4	
J1	1	ETHTX+	ETH interface
	2	ETHTX-	
	3	ETHRX+	
	4	ETHRX-	
	5	GND	<b>GND</b>
	6	1V8	<b>1.8V</b>
J11	1	2V8	MCU off line burning interface
	2	SWDIO	
	3	SWDCLK	
	4	GND	
	5	NRST	
J2	1	SD	TF Card slot
K1	1	WAKE_UP	Wake up button
K2	1	RESET	Reset button
J15	1	SENO_MD1N	Master control docking sensor board data output bit
	2	SENO_MD1P	
	3	SENO_MD2N	
	4	SENO_MD2P	
	5	SENO_MD3N	
	6	SENO_MD3P	
	7	CLKP	
	8	CLKN	
	9	SENO_MDOP	

	10	SENO_MDON	
	11	GND	GND
	12	CDS	Photosensitive signal
	13	SENSOR_CLK	Sensor clock
	14	GND	GND
	15	I2C_SDA	I2C control signal
	16	I2C_SCL	
	17	IRCUT_A	IRCUT control signal
	18	IRCUT_B	IRCUT control signal
	19	SENSOR_VS	Sensor column
	20	SENSOR_HS	Sensor line
	21	Sensor_pclk	Sensor_pclk
	22	GND	GND
	23	SPKN	Loudspeaker interface
	24	SPKP	
	25	MCU_WLED	MCU control infrared signal
	26	MCU_RLED	MCU control white light signal
	27	RED	indicator light
	28	GND	GND
	29	3V3	3.3V supply pin
	30	5V	5V supply pin
J31	1	USB	USB debugging power supply
J33	1	GND	GND
	2	VBAT	Battery powered
	3	+5V	5V powered
	4	SOL	Solar power supply detection
J8	1	GND	GND
	2	TX	TX
	3	RX	RX
	4	BOOTSEL	BOOTSEL
J32	1	PIR	Alarm PIR
	2	GND	GND
	3	2V8	Indicator power supply
	4	WB	Microwave alarm
	5	GND	GND
	6	BED_GPIO88	Power on indicator signal
	7	5V	Lamp panel power supply
	8	5V	
J14	1	SIM	SIM Card slot

# CMOS0307-LED-38X38-WP1-V1\_02 Interface description



Socket	Specific No	Interface Description	Function
J7 (Butt light panel)	1	RLED	Infrared control
	2	WLED	White light control
	3	RED_CTRL	Photosensitive signal
	4	YLED	Networking indicator signal
J25	1	SPK	Loudspeaker interface
	2	SPK	
J1	1	IRCUT_A	IRCUT interface
	2	IRCUT_B	
J15	1	SENO_MD1N	Master control docking sensor board data output bit
	2	SENO_MD1P	
	3	SENO_MD2N	
	4	SENO_MD2P	
	5	SENO_MD3N	
	6	SENO_MD3P	
	7	CLKP	
	8	CLKN	
	9	SENO_MDOP	
	10	SENO_MDON	
	11	GND	GND
	12	CDS	Photosensitive signal
	13	SENSOR_CLK	Sensor clock
	14	GND	GND
	15	I2C_SDA	I2C control signal
	16	I2C_SCL	
	17	IRCUT_A	IRCUT control signal
	18	IRCUT_B	IRCUT control signal
	19	SENSOR_VS	Sensor column
	20	SENSOR_HS	Sensor line
	21	Sensor_pclk	Sensor_pclk
	22	GND	GND
	23	SPKN	Loudspeaker interface
	24	SPKP	
	25	MCU_WLED	MCU control infrared signal
	26	MCU_RLED	MCU control white light signal
	27	RED	indicator light
	28	GND	GND
	29	3V3	3.3V supply pin
	30	5V	5V supply pin