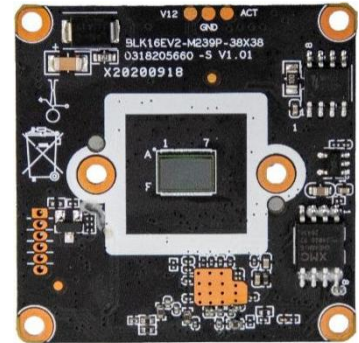


IVG-G4

4.0M Low illumination H.265 AI IP Camera Module

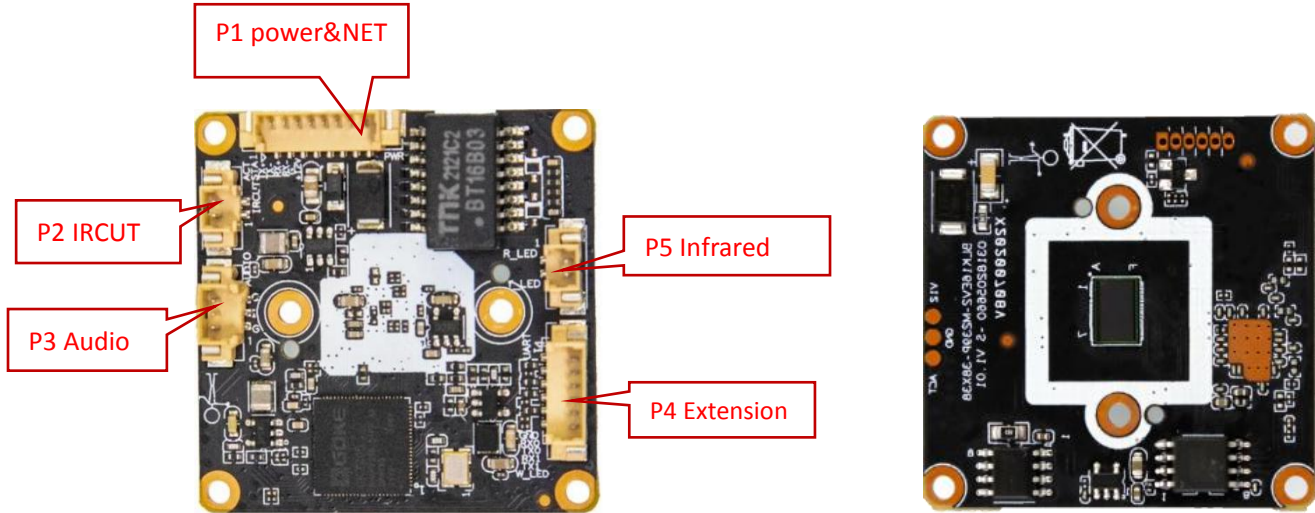
Features:

- Supporting human detection, face detection, and support to customize other intelligent functions
- 4.0MP HD Black light illumination resolution, clear and fine images;
- Support 2D/3D noise reduction, digital wide dynamic;
- Advanced H.265+ (Compatible with H.265/H.264) video compression, Super low rate, high definition quality of image;
- Professional anti-lightning, conform to GB/T17626.5 and IEC61000-4-5.
- Support ONVIF; access third party;
- Support various mobile monitoring (iPhone, Android);
- Provide web、CMS、center platform management software MYEYE, provide SDK development
- Support cloud technology, easy to achieve network penetration, fro in-line and alarm information pushed



Parameters:

| Model | IVG-G4 |
|-----------------------|---|
| System structure | Embedded RTOS, dual-core 32bit DSP (GK7205V210), pure hard compression, watch dog |
| Sensor | 4.0M 1/2.8" SC5239S Low illumination CMOS sensor, color 0.01Lux@F1.2, black/white 0.001Lux@F1.2 |
| Video compression | H.265+ (Compatible with H.265/H.264) support dual stream, AVI; 0.1M~8Mbps variable; 1~30f/s variable |
| Image output | Main stream: 2560*1440@18fps, 2304*1296@20fps, 1920*1080@25fps; sub-stream: 800*448@25fps |
| Shutter | 1/50(1/60)s to 1/10,000s |
| Lens | N/A |
| Day and night | Support IR-CUT, IR-CUT coil has an internal resistance of 20 ohms, the power-on time is less than 200ma, and the voltage is 3.5V-6V |
| Noise reduction | Support 2D/3D |
| Wide dynamic | Support digital Wide dynamic |
| Auto iris | N/A |
| Audio compression | G.711, support bidirectional talk, audio&video synchronization |
| Audio interface | 1ch input, level: 2Vp-p, impedance: 1kΩ, support sound pick-up input; 1ch output, impedance: 16Ω, 30mw, support microphone |
| Network interface | 1*RJ45 10/100M adaptive Ethernet port; support RTSP/FTP/DHCP/NTP/UPnP etc |
| Extension interface | Support external audio power amplifier, white light signal control, UART to expand other functions |
| Singal interface | One photo resistance interface, one IR-CUT interface, support photo resistance signal and IR-CUT links to IR |
| PTZ | N/A |
| Motor interface | N/A |
| Alarm I/O | N/A |
| WIFI interface | N/A |
| Reset interface | N/A |
| SD Card | N/A |
| Reliability | Comprehensive lightning protection, 7 * 24 hours 65 °C high temperature stable and reliable testing |
| Intelligence analysis | Supporting human detection, face detection, and support to customize other intelligent functions |
| Other function | Support WEB, OSD, live video transmission, motion detect and IO alarm, front-end storage/playback/download, and center reminder and image linkage, support JPEG capture; united remote client monitoring software、MYEYE; perfect SDK; |
| ONVIF | Support |
| Mobile monitoring | Support multiple mobile monitoring (iOS, Android) |
| Power | DC12V/2A input, power consumption: ≤3W, |
| Dimension | 38mm*38mm |
| Other | Support POE power supply, not support any custom, The drive voltage of the light board is at 3.3V |



| sign | Socket | Specific No | Interface Description | Function |
|------|--------|-------------|-----------------------|-------------------------------|
| P1 | J1 | 1 | ACT_LED | Indicator light |
| | | 2 | STA_LED | Indicator light |
| | | 3 | ETHTX+ | ETHTX+ |
| | | 4 | ETHTX- | ETHTX- |
| | | 5 | ETHRX+ | ETHRX+ |
| | | 6 | ETHRX- | ETHRX- |
| | | 7 | GND | GND |
| | | 8 | +12V | 12V input |
| P2 | J5 | 1 | IR-CUT | IR-CUT |
| | | 2 | IR-CUT | IR-CUT |
| P3 | J40 | 1 | GND | GND |
| | | 2 | AC_IN | Audio input |
| | | 3 | AC_OUT | Audio output |
| P4 | J44 | 1 | GND | GND |
| | | 2 | UART0_RXD | Debug Serial port accept |
| | | 3 | UART0_TXD | DebugSerial port send |
| | | 4 | UART1_RXD | Serial port accept |
| | | 5 | UART1_TXD | Audio IO port |
| | | 6 | W_LED | White light control |
| P5 | J41 | 1 | R_LED | Infrared light signal control |
| | | 2 | Y_LED | Infrared light control |