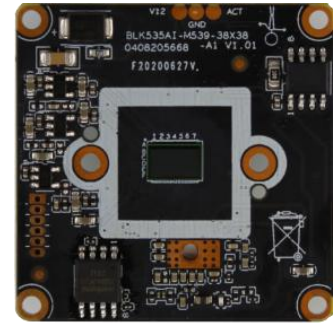
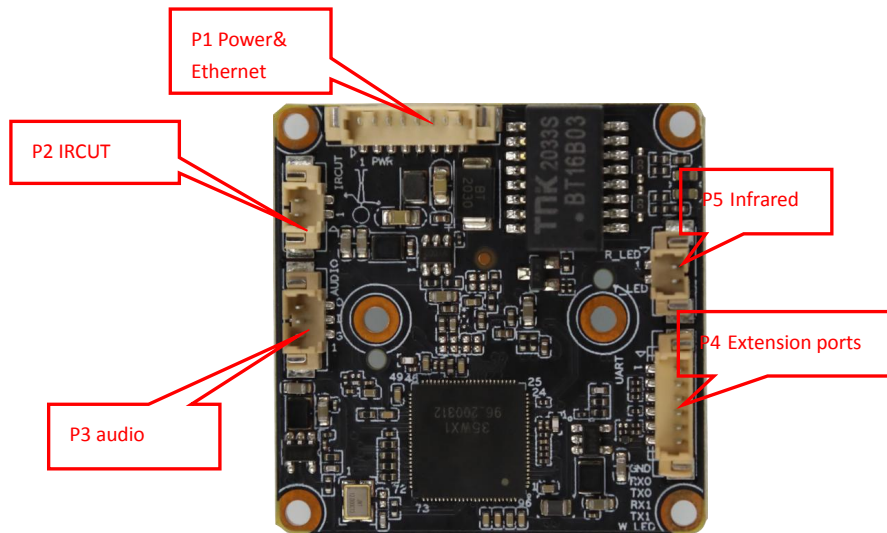


**IVG-85X30PSA-ST**
**3.0M Black light illumination H.265 IP Camera Module**
**Features:**

- Supporting Face detection, Humanoid detection, and supports customization of other smart functions etc.
- 3.0MP HD Black light illumination resolution, clear and fine images;
- Support 2D/3D noise reduction, digital wide dynamic;
- Advanced H.265AI/H.265+ (Compatible with H.265/H.264) video compression, Super low rate, high definition quality of image;
- Professional anti-lightning, conform to GB/T17626.5 and IEC61000-4-5.
- Support ONVIF; access third party, Support various mobile monitoring (iPhone, Android);
- Provide web, CMS, center platform management software MYEYE, provide SDK development
- Support cloud technology, easy to achieve network penetration, from in-line and alarm information pushed


**Parameters:**

Model	IVG-85X30PSA-ST
System structure	Embedded RTOS, dual-core 32bit DSP (XM535AI), pure hard compression, watch dog
Sensor	3.0M 1/2.8" SC3338 Black light CMOS sensor, color 0.0001Lux@F1.2, black/white 0.0001Lux@F1.2
Video compression	H.265AI/H.265+ (Compatible with H.265/H.264), support dual stream, AVI; 0.1M~8Mbps variable; 1~30f/s variable
Image output	Main stream: 2304*1296@20fps, 1920*1080@25fps; sub-stream: 800*448@25fps;
Shutter	1/50(1/60)s to 1/10,000s
Lens	N/A
Day and night	Support IR-CUT, IR-CUT coil has an internal resistance of 20 ohms, the power-on time is less than 200ma, and the voltage is 3.5V-6V
Noise reduction	Support 2D/3D
Wide dynamic	Support digital
Auto iris	N/A
Audio compression	G.711, support bidirectional talk, audio&video synchronization
Audio interface	1ch input, level: 2Vp-p, impedance: 1kΩ, support sound pick-up input; 1ch output, impedance: 16Ω, 30mw, support microphone
Network interface	1*RJ45 10/100M adaptive Ethernet port; support RTSP/FTP/DHCP/NTP/UPnP etc
Extension interface	N/A
Singal interface	One photo resistance interface, one IR-CUT interface, support photo resistance signal and IR-CUT links to IR
PTZ	N/A
Motor interface	N/A
Alarm I/O	N/A
WIFI interface	N/A
Reset interface	N/A
SD Card	N/A
Reliability	Comprehensive lightning protection, 7 * 24 hours -10°C~65°C high temperature stable and reliable testing
Intelligence analysis	Supporting Face detection, Humanoid detection, and supports customization of other smart functions etc.
Other function	Support WEB, OSD, live video transmission, motion detect and IO alarm, front-end storage/playback/download, and center reminder and image linkage, support JPEG capture; united remote client monitoring software, MYEYE; perfect SDK;
ONVIF	Support
Mobile monitoring	Support multiple mobile monitoring (iOS, Android)
Power	DC12V/2A input, power consumption: ≤3W,
Dimension	38mm*38mm
Other	Support POE power supply, not support any custom, The drive voltage of the light board is at 3.3V



Socket	Specific No	Interface Description	Function	Socket
P2	J5	1	IR-CUT	IR-CUT Control line
		2	IR-CUT	IR-CUT Control line
P4	J44	1	GND	GND
		2	RXO	RXO
		3	TXO	TXO
		4	RX1	RX1
		5	TX1	TX1
		6	W_LED	White light interface
P1	J1	1	LED/PHY_AD0	LED/PHY_AD0
		2	LED/PHY_AD1	LED/PHY_AD1
		3	ETHTX+	Ethernet signal+
		4	ETHTX-	Ethernet signal-
		5	ETHRX+	Ethernet signal+
		6	ETHRX-	Ethernet signal-
		7	GND	GND
		8	12V input	12V INPUT
P3	J40	1	GND	GND
		2	AC_INL	AUDIO INPUT
		3	AC_OUTL	AUDIO_OUT
P5	J41	1	R-LED	Soft infrared interface
		2	Y-LED	Hard infrared interface