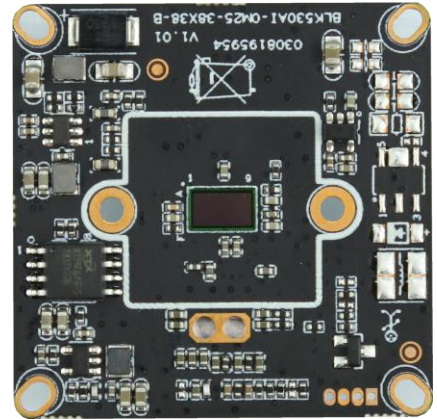


IVG-85X20PT-S

2.0M Black light illumination H.265 IP Camera Module

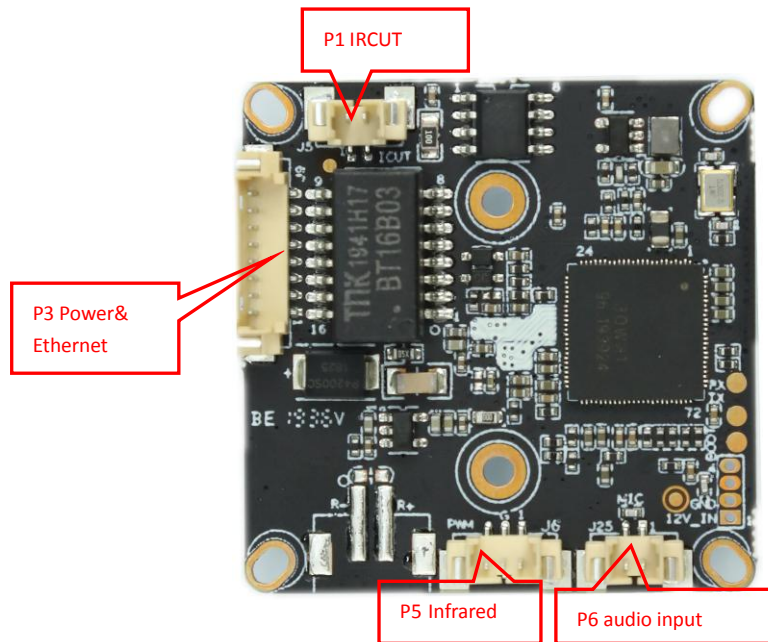
Features:

- Supporting Humanoid detection Face detection and tripping line detection, and supports intelligent functions such as customized face detection, number statistics, etc.
- 1080P HD Black light illumination resolution,clear and fine images;
- Support 2D/3D noise reduction,digital wide dynamic;
- Advanced H.265AI/H.265+ (Compatible with H.265/H.264) video compression,Super low rate,high definition quality of image;
- Professional anti-lightning,conform to GB/T17626.5 and IEC61000-4-5.
- Support ONVIF;access third party, Support various mobile monitoring(iPhone,Android);
- Provide web、CMS、 center platform management software MYEYE,provide SDK development
- Support cloud technology,easy to achieve network penetration,fro in-line and alarm information pushed



Parameters:

Model	IVG-85X20PT-S
System structure	Embedded RTOS,dual-core 32bit DSP(XM530AI),pure hard compression ,watch dog
Sensor	2.0M 1/3"F37 Black light illumination CMOS sensor,color 0.0001Lux@F1.2,black/white 0.0001Lux@F1.2
Video compression	H.265AI/H.265+ (Compatible with H.265/H.264),support dual stream,AVI;0.1M~8Mbps variable;1~30f/s variable
Image output	Main stream: 1920*1080@25fps,1280*720@25fps; sub-stream: 704*576@25fps;
Shutter	1/50(1/60)s to 1/10,000s
Lens	N/A
Day and night	Support IR-CUT,IR-CUT coil has an internal resistance of 20 ohms, the power-on time is less than 200ma, and the voltage is 3.5V-6V
Noise reduction	Support 2D/3D
Wide dynamic	Support digital
Auto iris	N/A
Audio compression	G.711,support bidirectional talk,audio&video synchronization
Audio interface	1ch input,level:2Vp-p,impedance:1kΩ,support sound pick-up input
Network interface	1*RJ45 10/100M adaptive Ethernet port; support RTSP/FTPDHCP/NTP/UPnP etc
Extension interface	N/A
Singal interface	One photo resistance interface,one IR-CUT interface ,support photo resistance signal and IR-CUT links to IR
PTZ	N/A
Motor interface	N/A
Alarm I/O	N/A
WIFI interface	N/A
Reset interface	N/A
SD Card	N/A
Reliability	Comprehensive lightning protection, 7 * 24 hours -10℃~65℃high temperature stable and reliable testing
Intelligence analysis	Supporting Humanoid detection and face detection, and supports intelligent functions such as customized face detection, number statistics, etc.
Other function	Support WEB,OSD,live video transmission,motion detect and IO alarm,front-end storage/playback/download, and center reminder and image linkage,support JPEG capture; united remote client monitoring sofaware、MYEYE;perfect SDK;
ONVIF	Support
Mobile monitoring	Support multiple mobile monitoring (iOS, Android)
Power	DC12V/2A input, power consumption:≤3W,
Dimension	38mm*38mm
Other	Support POE power supply, not support any custom,The drive voltage of the light board is at 3.3V



Socket	Specific No	Interface Description	Function	Socket
P1	J5	1	IR-CUT	IR-CUT Control line
		2	IR-CUT	IR-CUT Control line
P7		1	GND	GND
		2	UATRO_TXD	UART0_TXD
		3	UATRO_RXD	UART0_RXD
P5	J6	1	ADC1_IN	INFRARED LIGHT SIGNAL CONTROL
		2	GND	GND
		3	PWM	PWM OUTPUT
P3	J9	1	LED/PHY_AD0	LED/PHY_AD0
		2	LED/PHY_AD1	LED/PHY_AD1
		3	ETHTX+	Ethernet signal+
		4	ETHTX-	Ethernet signal-
		5	ETHRX+	Ethernet signal+
		6	ETHRX-	Ethernet signal-
		7	GND	GND
		8	12V input	12V INPUT
P2	J26	1	12V	12V
		2	GND	GND
		3	AC_OUTL	AUDIO OUTPUT
		4	AO_EN/YLED_GPIO093	AO_EN/YLED_GPIO093
P6	J24	1	GND	GND
		2	AC_INL/MICP	AUDIO INPUT
P4	J27	1	R-	R-
		2	R+	R+