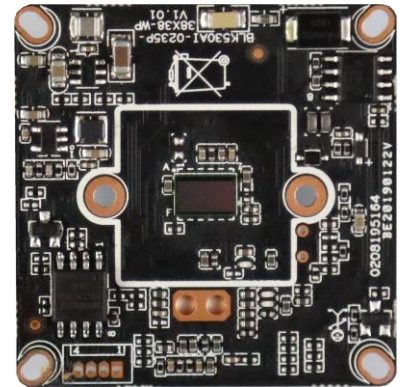
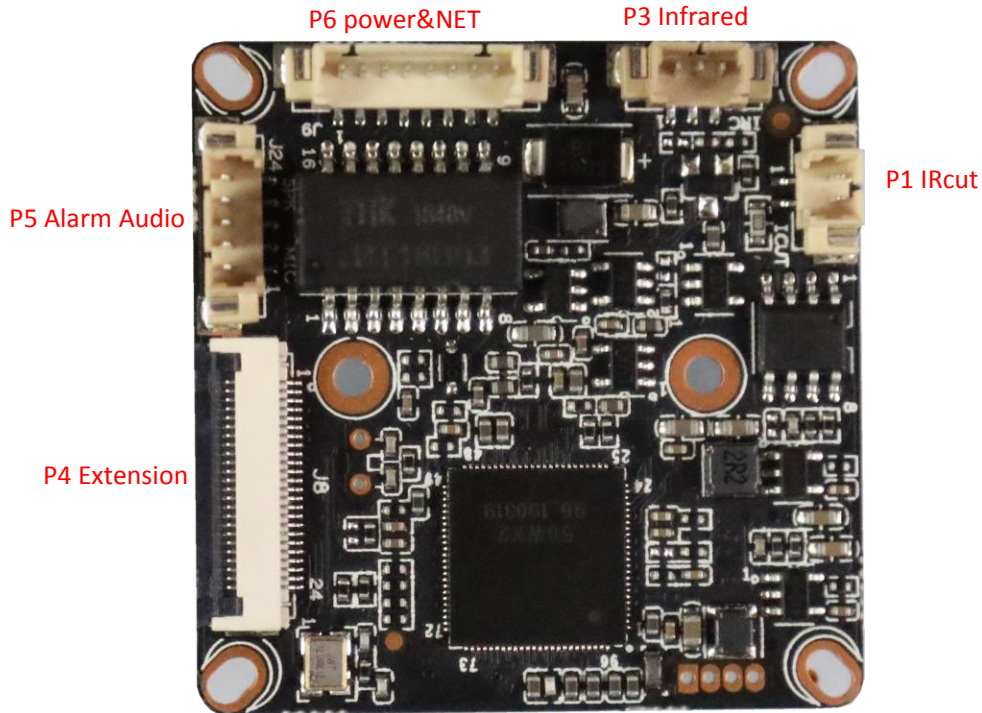


IVG-85X20PS-SY
2.0M Black light illumination Face Recognition IP Module
Features:

- Supporting face detection and recognition, capturing clear face images;
- Real-time face snapshot comparison;
- 1080P HD resolution, Black light illumination,clear and fine images;
- Support 2D/3D noise reduction,digital wide dynamic;
- Advanced H.265AI/H.265+ (Compatible with H.265/H.264) video compression,Super low rate,high definition quality of image;
- Professional anti-lightning,conform to GB/T17626.5 and IEC61000-4-5.
- Support ONVIF;access third party;
- Support various mobile monitoring(iPhone,Android);
- Provide web、CMS、center platform management software MYEYE,provide SDK development
- Support cloud technology,easy to achieve network penetration,fro in-line and alarm information pushed


Parameters:

Model	IVG-85X20PS-SY
System structure	Embedded RTOS,dual-core 32bit DSP(XM550AI),pure hard compression ,watch dog
Sensor	2.0M 1/2.9"SC307E Black light illumination CMOS sensor ,color 0.0001Lux@F1.2,black/white 0.0001Lux@F1.2
Video compression	H.265AI/H.265+ (Compatible with H.265/H.264),support dual stream,AVI;0.1M~8Mbps variable;1~30f/s variable
Image output	Main stream: 1920*1080@25fps,1280*720@25fps; sub-stream: 704*576@25fps;
Shutter	1/50(1/60)s to 1/10,000s
performance	Single face recognition delay < 500ms
Pixel size	Minimum support for 80*80 pixel point size face capture
Scope of face capture	Support side face capture, partially occluded face capture and multi-color face capture.
Number of face captures	Capturing 8 to 32 face images per second
Day and night	Support IR-CUT,IR-CUT coil has an internal resistance of 20 ohms, the power-on time is less than 200ma, and the voltage is 3.5V-6V
Noise reduction	Support 2D/3D
Wide dynamic	Support digital
Audio compression	G.711,support bidirectional talk,audio&video synchronization
Audio interface	1ch input,level:2Vp-p,impedance:1kΩ,support sound pick-up input;1ch output,impedance:16Ω,30mw,support microphone
Network interface	1*RJ45 10/100M adaptive Ethernet port; support RTSP/FTP/DHCP/NTP/UPnP etc
Extension interface	SD card,ALARM1/1, RTC,RESET,USB WIFI
Singal interface	One photo resistance interface,one IR-CUT interface ,support photo resistance signal and IR-CUT links to IR
Alarm I/O	1/0 (support alarm input and video link to background)
Application scenarios	Enterprises and residential environments such as security gates, Airport security, border inspection, ATM machines, face attendance, etc.
Reliability	Comprehensive lightning protection, 7 * 24 hours 65 °C high temperature stable and reliable testing
Intelligence analysis	Support for face detection, with the use of PC or NVR, can carry out black-and-white list, face recognition function, support for fuzzy detection, scene transformation, video occlusion and other basic intelligence.
Other function	Supports the license plate recognition module supporting tools,Provide a complete license plate recognition SDK development kit,Support the identification of regional division
ONVIF	Support
Mobile monitoring	Support multiple mobile monitoring (iOS, Android)
Power	DC12V/2A input, power consumption:≤3W,
Dimension	38mm*38mm
Other	Support POE power supply,The drive voltage of the light board is at 3.3V



sign	Socket	Specific No	Interface Description	Function
P1	J5	1	IC-CUT	IRCUT output
		2	IC-CUT	IRCUT output
P3	J6	1	LED_CTRL	GPIO/PWM
		2	GND	GND
		3	Pwm	IRIN
P4	J8	1	3.3V	3.3V
		2	3.3V	3.3V
		3	GND	GND
		4	RTC_BAT	ALARM_IN1
		5	ALARM_IN1	KET_SET
		6	KET_SET	LED_CTRL
		7	LED_CTRL	ALARM_OUT
		8	ALARM_OUT	GND
		9	GND	WIFI_DATA0
		10	WIFI_DATA0	WIFI_PDN
		11	WIFI_PDN	GND
		12	GND	WIFI_CMD
		13	WIFI_CMD	GND
		14	GND	WIFI_CLK
		15	WIFI_CLK	GND
		16	GND	SD_DATA3
		17	SD_DATA3	ALARM_IN1
		18	SD_DATA2	SD_DATA2

		19	SD_DATA1	SD_DATA1
		20	SD_DATA0	SD_DATA0
		21	GND	GND
		22	SD_CMD	SD_CMD
		23	GND	GND
		24	SD_CLK	SD_CLK
P5	J24	1	MICN	MICN
		2	MICP	MICP
		3	ALARM_IN	ALARM_IN
		4	SPKP	SPKP
		5	SPKN	SPKN
P6	J9	1		
		2	LED1/PHYAD1+	LED
		3	ETHRX-	Ethernet signal
		4	ETHRX+	Ethernet signal
		5	ETHTX-	Ethernet signal
		6	ETHTX+	Ethernet signal
		7	GND	GND
		8	12V	12V