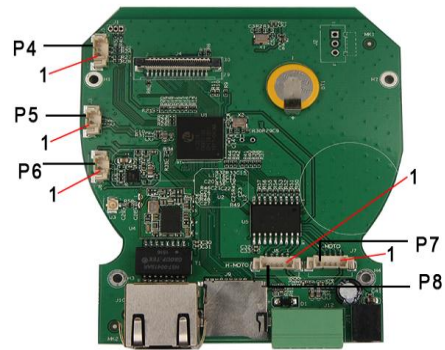


IPM-53H13PE-WRC

Features:

- Main stream 1280\*960, 1280\*720;Sub stream 704\*576;
- Support Micro SD card,up to 32G;
- Support ONVIF; Support Third-party NVR;
- Support for mobile video surveillance(iOS,android);
- Support Web, CMS, platform management software MYEYE,Provide SDK ;
- Support cloud service, network penetration, alarm information pushed to phone ,etc.



Parameters:

Model	IPM-53H13PE-WRC
System structure	Embedded RTOS, dual-core 32-bit DSP (Hi3518E),pure hard compression ,watch dog
illumination	color 0.01Lux@F1.2,black/white 0.001Lux@F1.2
Video compression	H.264,support dual stream,AVI;0.1M~6Mbps variable;1~20f/s variable
Image output	Main stream: 1280*960, 1280*720, sub-stream: 704*576;
Audio interface	1ch input,electrical level 2Vp-p,impedance 1kΩ,support pickup input;1ch output, impedance 16Ω,30mv output power,support to connect the headset or power amplifier
Audio processing	G.711 standard compression,support two-way Bidirectional Talk,support for audio and video synchronization
Alarm input	1 channel
Alarm output	1 channel
Motor interface	A horizontal motor interface, a vertical electrical interfaces, a limit switch;
SD card	Support,maximum 32G
Other function	Support WEB configure,support for OSD,support real-time video transmission, support mobile surveillance,support for mobile detection alarm center after the screen pop-up reminders and linkage;supports JPEG capture;support unified client remote monitoring software,MYEYE platform system applications;provide perfect the SDK development package;
ONVIF	unsupport
Mobile monitoring	Support multiple mobile monitoring (iOS, Android)
Other	Restore factory settings button interface, support photo resistor linkage;
Explain	Does not accept any custom.