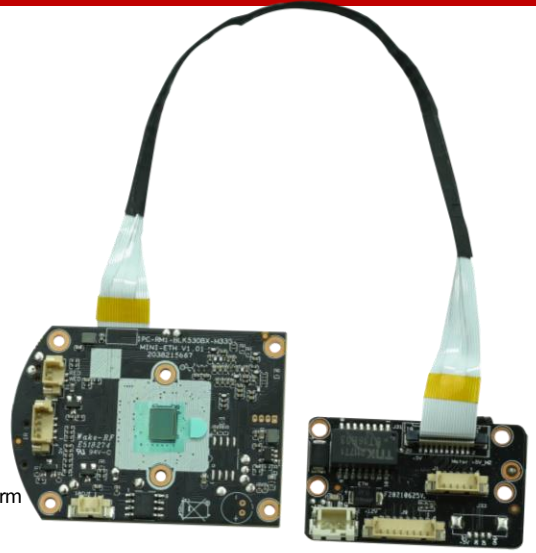


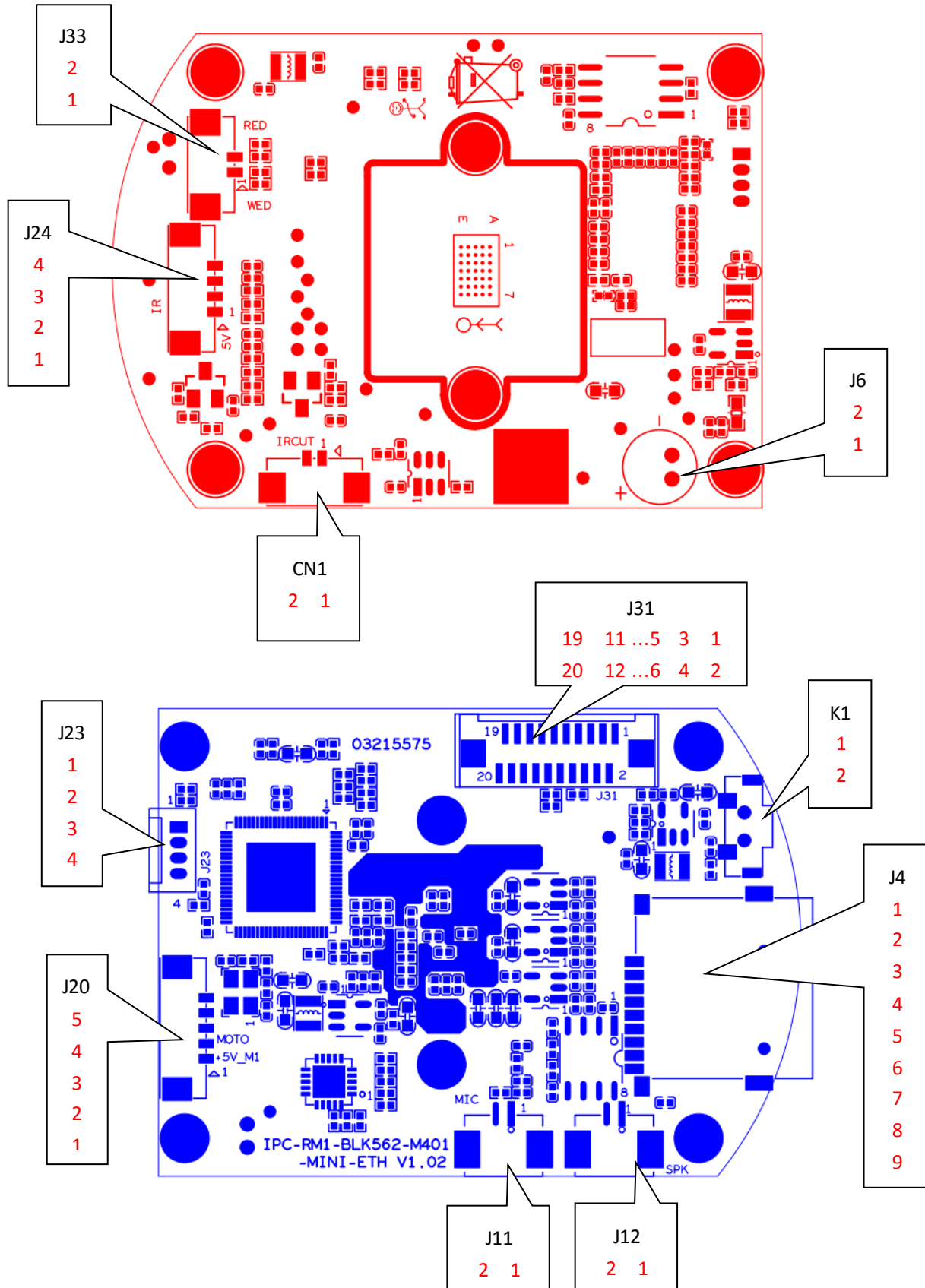
IPG-X5-WQ
5MP WiFi Dome Camera module
Features:

- 5MP resolution, clear and fine images;
- Support for wired and wireless connections
- Supporting human detection;
- Support 2D/3D noise reduction, digital wide dynamic;
- Advanced H.265X video compression, Super low rate, high definition quality of image;
- Professional anti-lightning, conform to GB/T17626.5 and IEC61000-4-5;
- Support ONVIF; access third party;
- Support various mobile monitoring (iPhone, Android);
- Support cloud technology, easy to achieve network penetration, from in-line and alarm information pushed;


Parameters:

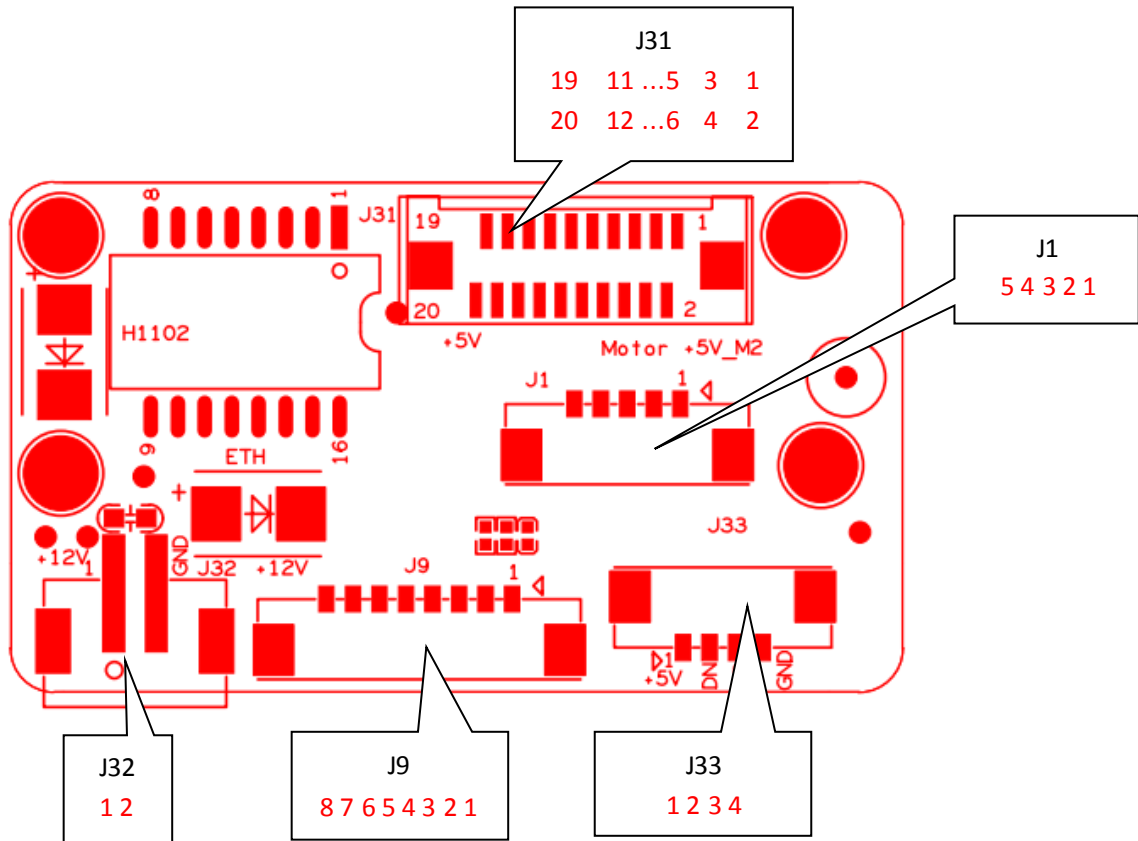
Model	IPG-X5-WQ
System structure	dual-core 32-bit DSP (XM650), pure hard compression, watch dog
Sensor	5MP 1/2.7SC5335P CMOS sensor
Video compression	H.265X coding, support dual stream, AVI; 0.1M~10Mbps variable
Min. Illumination	Color: 0.001Lux @(F1.2, AGC ON); 0 Lux with IR Black/White: 0.0001 Lux @ (F1.2, AGC ON), 0 Lux with IR
Image output	Main stream: 2592*1944@12fps; sub-stream: 640*360@12fps
Shutter	1/50(1/60)s to 1/10,000s
Lens	N/A
Day and night	Support IR-CUT
Noise reduction	Support 2D/3D
Wide dynamic	Support
Auto iris	N/A
Audio compression	G.711 standard compression, support two-way Bidirectional Talk, support for audio and video synchronization
Audio interface	1ch input, level: 2Vp-p, impedance: 1kΩ, support sound pick-up input; 1ch output, impedance: 16Ω, 30mw, support microphone;
Network interface	1 RJ45 Ethernet interface, 10/100M adaptive
Extension interface	N/A
Signal interface	one IR-CUT interface
PTZ interface	One horizontal motor interface, one vertical electrical interface
Alarm I/O	N/A
Network interface	supporting wireless network connection
Reset interface	Support
Storage mode	Local TF card, up to 128G; cloud storage
Reliability	Comprehensive lightning protection, 7 * 24 hours 65 °C high temperature stable and reliable testing
Intelligence analysis	Supporting human detection, support to customizing other intelligent functions
Other function	It supports remote monitoring of mobile client, push message after alarm of human figure detection, and supports MJPEG capture;
ONVIF	support
Mobile monitoring	support
Power	DC12V
Dimension	38mm*53mm+24mm*42mm
Other	N/A

IPG-X5-WQ
Interface description



Socket	Specific No	Interface Description	Function
J33	1	WED_GPIO041	White light control port
	2	RED_GPIO039	Infrared light control port
J24	1	5V	5V
	2	GND	GND
	3	ADC1_IN	Photosensitive signal acquisition port
	4	GPI0091	indicator light
CN1	1	IRCUT_B	IRCUT signal 2
	2	IRCUT_A	IRCUT signal 1
J6(reserve)	1	MIC_IN	Microphone signal input
	2	MIC_G	GND
J23	1	GND	GND
	2	UART0_TXD	Serial port sending
	3	UART0_RXD	Serial port receiving
	4	X	Empty
J20	1	+5V_M1	Horn signal
	2	OUT1	Vertical motor signal
	3	OUT2	Vertical motor signal
	4	OUT3	Vertical motor signal
	5	OUT4	Vertical motor signal
J11	1	MIC_IN	Microphone signal input
	2	MIC_G	GND
J12	1	SPKN	Horn signal
	2	SPKP	Horn signal
J4	1	SD_DATA2	TF card data signal
	2	SD_DATA3	TF card data signal
	3	SD_CMD	TF card data signal
	4	3V3_SD	3.3V power supply
	5	SD_CLK	TF card clock signal
	6	GND	GND
	7	SD_DATA0	TF card data signal
	8	SD_DATA1	TF card data signal
	9	SD_CDTCT	TF card detection signal
K1	1	GND	GND
	2	KEY_SET	Key reset
J31 (Docking board interface)	1	OUT1	Horizontal motor signal
	2	OUT2	Horizontal motor signal
	3	OUT3	Horizontal motor signal
	4	OUT4	Horizontal motor signal
	5	GND	GND

	6	KEY_SET	Interface board reserved reset button
	7	GND	GND
	8	WIFI_PDN	WiFi signal detection port
	9	WIFI_DN	WiFi signal
	10	WIFI_DP	WiFi signal
	11	GND	GND
	12	TPTX -	Network port send signal negative
	13	TPTX+	Network port sending signal positive
	14	GND	GND
	15	TPRX+	Network port sending signal positive
	16	TPRX -	Network port send signal negative
	17	GND	GND
	18	1V8	1.8V
	19	+5V	5V
	20	+5V	5V



Socket	Specific No	Interface Description	Function
J32	1	+12V	12V
	2	GND	GND
J9	1	KEY_SET	Reset button of tail line belt
	2	+3.3V	3.3V
	3	ETHTX+	Network port sending signal positive
	4	ETHTX -	Network port send signal negative
	5	ETHRX+	Network port sending signal positive
	6	ETHRX -	Network port send signal negative
	7	GND	GND
	8	12V	12V
J33 (Reserved 4G module interface)	1	+5V_3V3	5V
	2	WIFI_DN	4G module signal
	3	WIFI_DP	4G module signal
	4	GND	GND
J1	1	+5V_M2	5V
	2	OUT1	Horizontal motor signal
	3	OUT2	Horizontal motor signal
	4	OUT3	Horizontal motor signal

	5	OUT4	Horizontal motor signal
J31(Docking motherboard)	1	OUT1	Horizontal motor signal
	2	OUT2	Horizontal motor signal
	3	OUT3	Horizontal motor signal
	4	OUT4	Horizontal motor signal
	5	GND	GND
	6	KEY_SET	Reset button of tail line belt
	7	GND	GND
	8	WIFI_PDN	WiFi signal detection port
	9	WIFI_DN	WiFi signal
	10	WIFI_DP	WiFi signal
	11	GND	GND
	12	TPTX -	Network port send signal negative
	13	TPTX+	Network port sending signal positive
	14	GND	GND
	15	TPRX+	Network port sending signal positive
	16	TPRX -	Network port send signal negative
	17	GND	GND
	18	1V8	1.8V
	19	+5V	5V
	20	+5V	5V