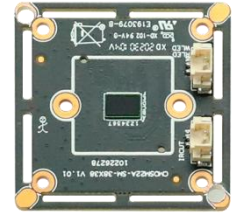


IPG-X4-WEQ
4MP Bullet&Dome Integrated Camera Module
Features:

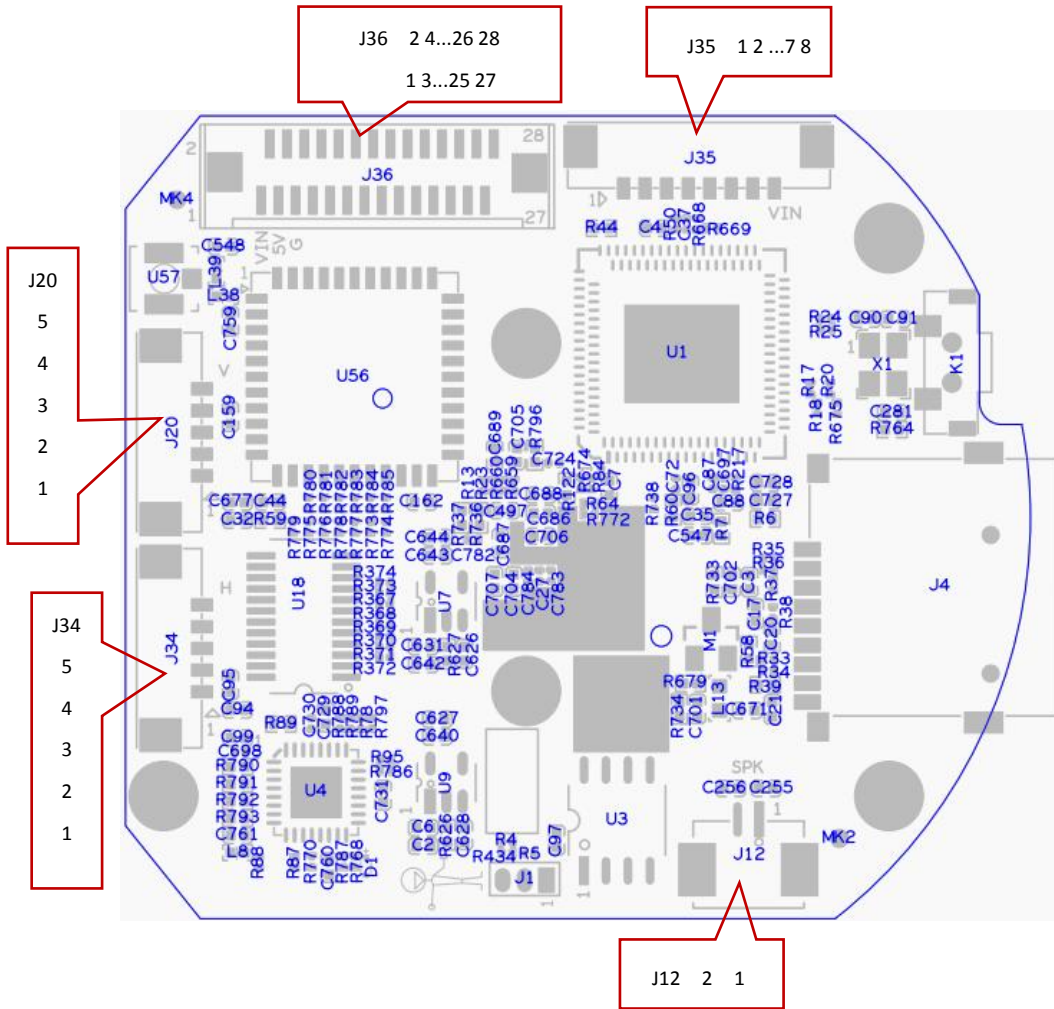
- 2MP Bullet and 2MP Dome cameras spliced into 4MP with clear and detailed image;
- Support human shape detection, tracking and capturing;
- Support dual light, human shape and intelligence (line mixing, area care, etc.);
- Support for wired and wireless connections
- Support 2D/3D noise reduction,digital wide dynamic;
- Advanced H.265AI video compression,Super low rate,high definition quality of image;
- Professional anti-lightning,conform to GB/T17626.5 and IEC61000-4-5;
- Support ONVIF;access third party;
- Support various mobile monitoring(iPhone,Android);
- Support cloud technology,easy to achieve network penetration,fro in-line and alarm information pushed;

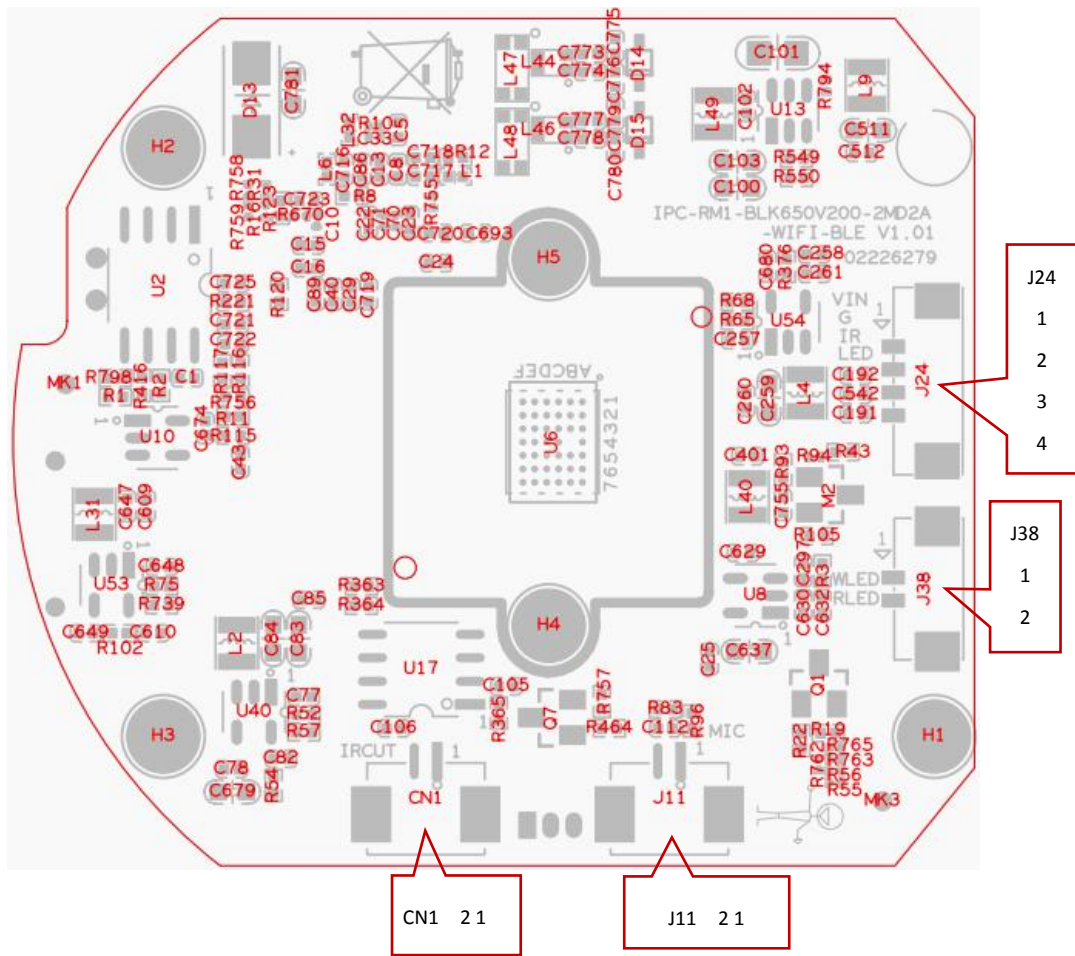

Parameters:

Model	IPG-X4-WEQ
System structure	dual-core 32-bit DSP (XM650V200) ,pure hard compression ,watch dog
Sensor	2 pcs 1080P 1/2.8" SC233A CMOS sensor
Video compression	H.265AI coding,support dual stream,AVI;0.1M~10Mbps variable
Min.Illumination	Color: 0.01Lux @(F1.2,AGC ON); 0 Lux with IR Black/White: 0.001 Lux @(F1.2,AGC ON),0 Lux with IR
Image output	Main stream: 1920*2160@12fps; sub-stream:800*896@12fps
Shutter	1/50(1/60)s to 1/10,000s
Lens	N/A
Day and night	Support IR-CUT
Noise reduction	Support 2D/3D
Wide dynamic	Support
Auto iris	N/A
Audio compression	G.711 standard compression,support two-way Bidirectional Talk,support for audio and video synchronization
Audio interface	1ch input,level:2Vp-p,impedance:1kΩ,support sound pick-up input;1ch output,impedance:16Ω,30mw,support microphone;
Network interface	1 RJ45 Ethernet interface, 10/100M adaptive
Extension interface	N/A
Singal interface	one IR-CUT interface
PTZ interface	One horizontal motor interface, one vertical motor interface
Alarm I/O	N/A
Network interface	supporting wireless network connection
Reset interface	Support
Storage mode	Local TF card, up to 128G; cloud storage
Reliability	Comprehensive lightning protection, 7 * 24 hours 65 °C high temperature stable and reliable testing
Intelligence analysis	Supporting human detection ,support to customizing other intelligent functions
Other function	It supports remote monitoring of mobile client, push message after alarm of human figure detection, and supports MJPEG capture;
ONVIF	support
Mobile monitoring	support
Power	DC12V
Dimension	53mm*46mm+38mm*38mm

IPG-X4-WEQ

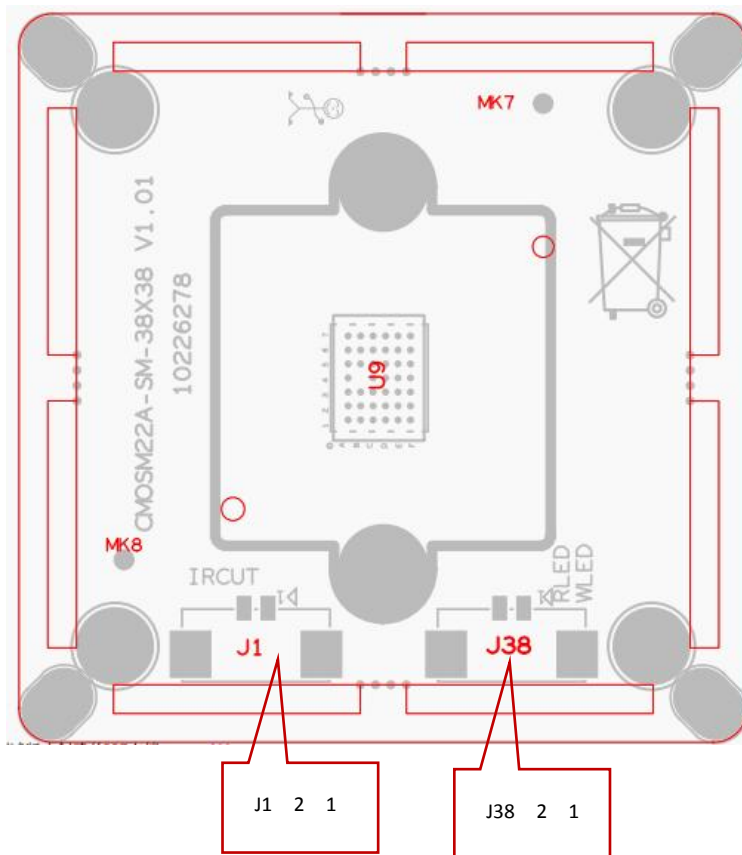
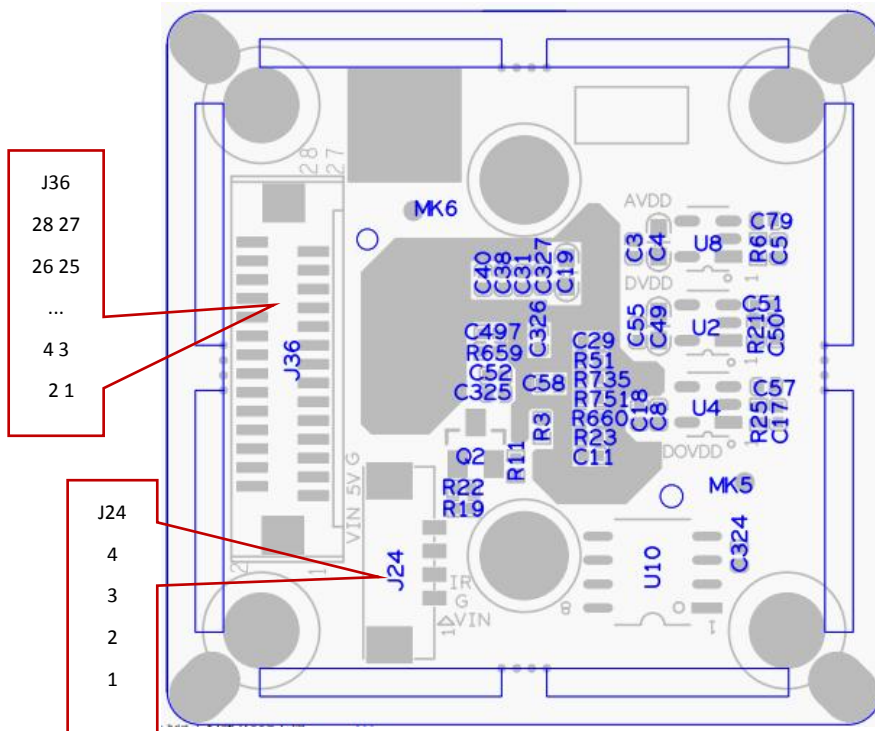
Interface description





Socket	Specific No	Interface Description	Function
J36	1	VCC_IN	12V Power Supply
	2		
	3	5V	5V Power Supply
	4		
	5	GND	GND
	6		
	7	IR	Hard photosensitive input signal
	8	RLED	Infrared lamp control signal
	9	WLED	White light control signal
	10	GND	GND
	11	IRCUTA	IRCUT drive
	12	IRCUTB	
	13	GND	GND
	14	SCL	IIC signal
	15	SDA	
	16	RST	Sensor reset

	17	GND	GND
	18	SEN0_MCLK	SENSOR Correlation signal
	19	GND	
	20	SEN_CLK0N	
	21	SEN_CLK0P	
	22	GND	
	23	SEN_D0N	
	24	SEN_D0P	
	25	GND	
	26	SEN_D1N	
	27	SEN_D1P	
	28	GND	
J20	1	5V	
	2	OUT8	
	3	OUT7	
	4	OUT6	
	5	OUT5	
J34	1	5V	Horizontal motor interface
	2	OUT1	
	3	OUT2	
	4	OUT3	
	5	OUT4	
J12	1	SPKN	SPK
	2	SPKP	
J35	1	LINK/KEY_SET	Network interface indicator/reset button
	2	ACT	Wired network
	3	ETHTX+	
	4	ETHTX-	
	5	ETHRX+	
	6	ETHRX-	
	7	GND	GND
	8	VCC_IN	12V Power Supply
J11	1	MIC_G	MIC
	2	MIC_IN	
CN1	1	OUT1	IRCUT
	2	OUT2	
J24	1	VCC_IN	12V Power Supply
	2	GND	GND
	3	IR	Hard photosensitive input signal
	4	LED	indicator light
J38	1	WLED	White light control signal
	2	RLED	Infrared lamp control signal



Socket	Specific No	Interface Description	Function
J36	1	VCC_IN	12V Power Supply
	2		
	3	5V	5V Power Supply
	4		
	5	GND	GND
	6		
	7	IR	Hard photosensitive input signal
	8	RLED	Infrared lamp control signal
	9	WLED	White light control signal
	10	GND	GND
	11	IRCUTA	IRCUT drive
	12	IRCUTB	
	13	GND	GND
	14	SCL	IIC signal
	15	SDA	
	16	RST	Sensor reset
	17	GND	GND
	18	SEN0_MCLK	SENSOR Correlation signal
	19	GND	
	20	SEN_CLK0N	
	21	SEN_CLK0P	
	22	GND	
	23	SEN_D0N	
	24	SEN_D0P	
	25	GND	
	26	SEN_D1N	
	27	SEN_D1P	
	28	GND	
J24	1	VCC_IN	12V Power Supply
	2	GND	GND
	3	IR	Hard photosensitive input signal
	-	-	-
J38	1	WLED	White light control signal
	2	RLED	Infrared lamp control signal
J1	1	OUT1	IRCUT
	2	OUT1	