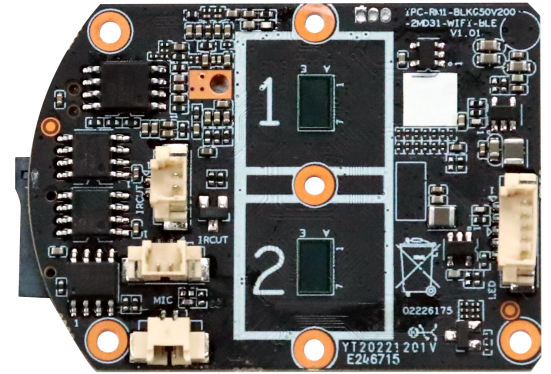


IPG-X2-WR2

1080P Binocular WiFi PT Camera module

Features:

- 1080P resolution,clear and fine images;
- Support binocular 5x hybrid zoom;
- Support picture in picture display,Double-screen synchronization preview, SD card recording supports playback zoom;
- Support human shape ,supports human form zoom tracking.;
- Support for wireless connections
- Support 2D/3D noise reduction,digital wide dynamic;
- Advanced H.265AI video compression,Super low rate,high definition quality of image;
- Professional anti-lightning,conform to GB/T17626.5 and IEC61000-4-5;
- Support ONVIF;access third party;Support various mobile monitoring(iPhone,Android);
- Support cloud technology,easy to achieve network penetration,fro in-line and alarm information pushed;

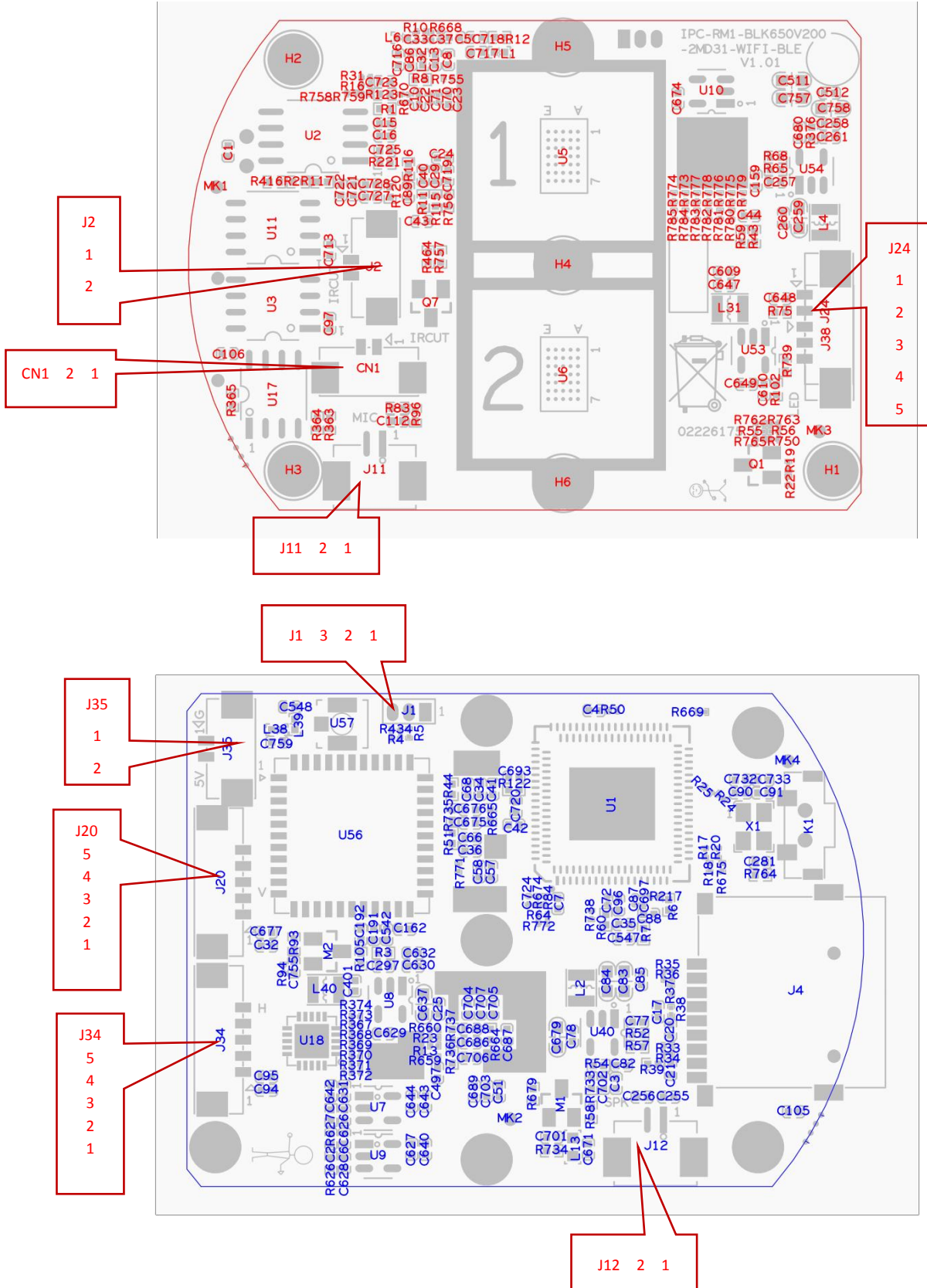


Parameters:

Model	IPG-X2-WR2
System structure	dual-core 32-bit DSP (XM650V200) ,pure hard compression ,watch dog
Sensor	2 pcs 1080P 1/3.2"SC2331 CMOS sensor
Video compression	H.265AI coding,support dual stream,AVI;0.1M~10Mbps variable
Min.Illumination	Color: 0.01Lux @(F1.2,AGC ON); 0 Lux with IR Black/White: 0.001 Lux @ (F1.2,AGC ON),0 Lux with IR
Image output	Main stream: 1920*1080@12fps; sub-stream: 800*448@12fps
Shutter	1/50(1/60)s to 1/10,000s
Lens	N/A
Day and night	Support IR-CUT
Noise reduction	Support 2D/3D
Wide dynamic	Support
Auto iris	N/A
Audio compression	G.711 standard compression,support two-way Bidirectional Talk,support for audio and video synchronization
Audio interface	1ch input,level:2Vp-p,impedance:1kΩ,support sound pick-up input;1ch output,impedance:16Ω,30mw,support microphone;
Extension interface	N/A
Singal interface	one IR-CUT interface
PTZ interface	One horizontal motor interface, one vertical motor interface
Alarm I/O	N/A
Network interface	supporting wireless network connection
Reset interface	Support
Storage mode	Local TF card, up to 128G; cloud storage
Reliability	Comprehensive lightning protection, 7 * 24 hours 65 °C high temperature stable and reliable testing
Intelligence analysis	Supporting human detection ,support to customizing other intelligent functions
Other function	It supports remote monitoring of mobile client, push message after alarm of human figure detection, and supports MJPEG capture;
ONVIF	support
Mobile monitoring	support
Power	DC5V
Dimension	38mm*54mm

IPG-X2-WR2

Interface description



Socket	Specific No	Interface Description	Function
J2	1	IR-CUTA	Lens 1 IR-CUT interface
	2	IR-CUTB	
CN1	1	IR-CUTA	Lens 2 IR-CUT interface
	2	IR-CUTB	
J11	1	MIC_G	Microphone interface
	2	MIC_IN	
J24	1	5V	5V power supply
	2	GND	GND
	3	ADC1_IN	Hard photosensitive signal acquisition
	4	RLED	Infrared light control signal
	5	WLED	White light control signal
J35	1	GND	Power supply interface
	2	5V	
J20	1	5V	Vertical motor interface
	2	OUT1	
	3	OUT2	
	4	OUT3	
	5	OUT4	
J34	1	5V	Horizontal motor interface
	2	OUT8	
	3	OUT7	
	4	OUT6	
	5	OUT5	
J12	1	SPKN	Speaker Interface
	2	SPKP	