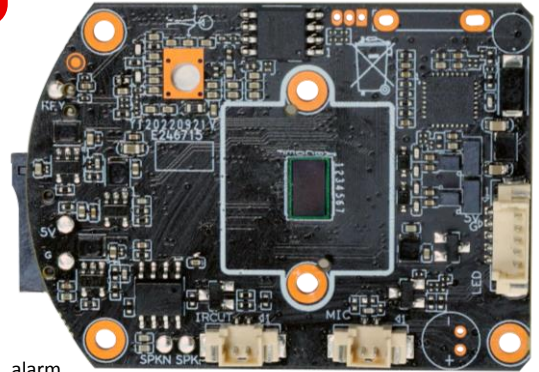


**IPG-X2-WQ**
**1080P WiFi Dome Camera module**
**Features:**

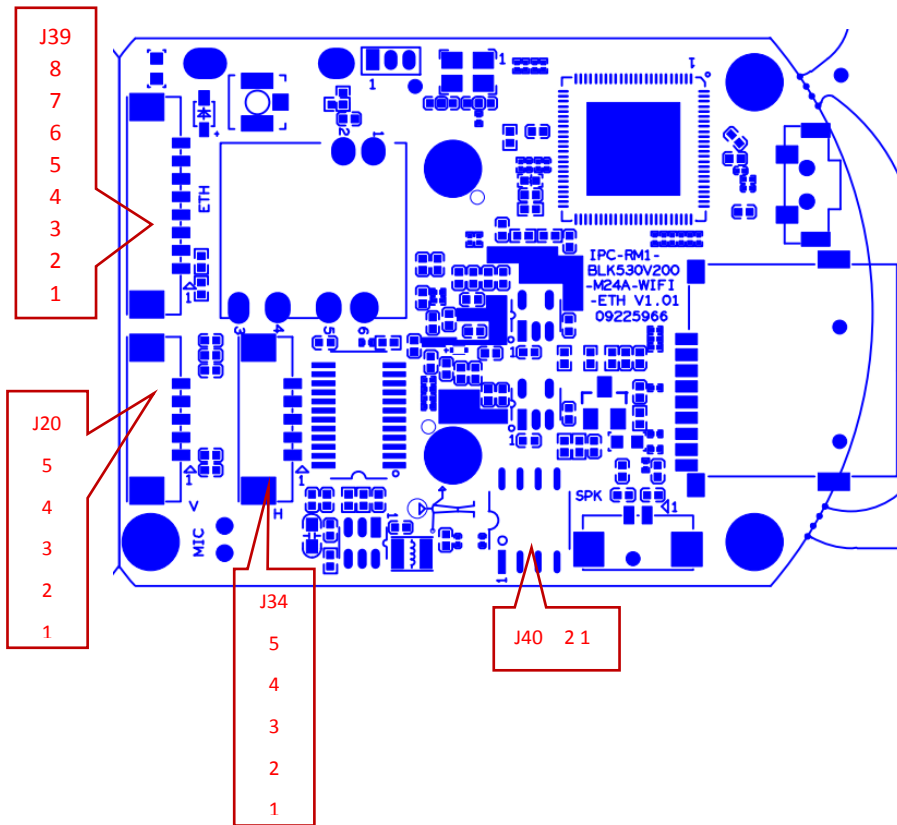
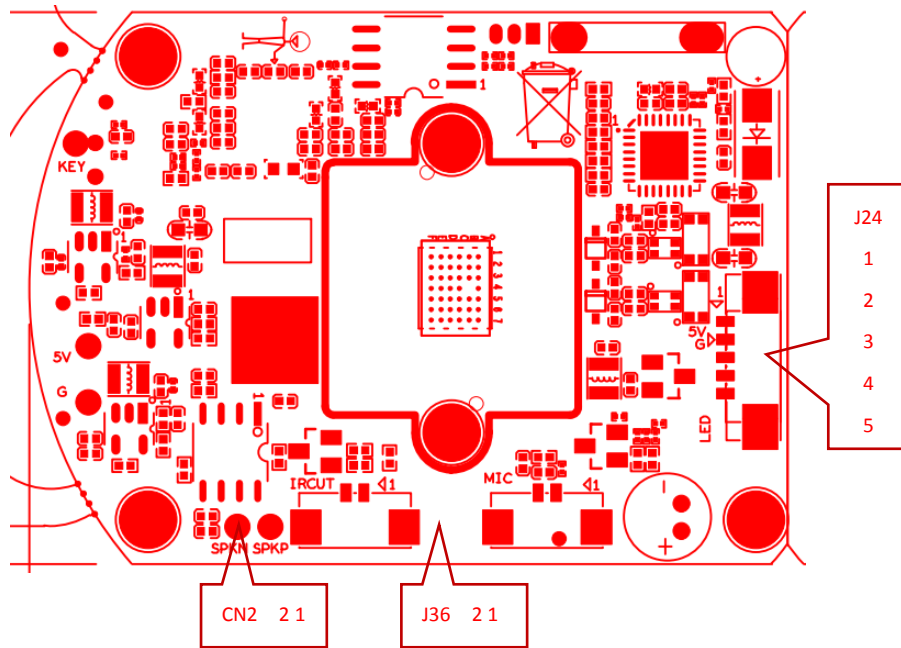
- 1080P resolution, clear and fine images;
- Support for wired and wireless connections
- Supporting human detection;
- Support 2D/3D noise reduction, digital wide dynamic;
- Advanced H.265AI video compression, Super low rate, high definition quality of image;
- Professional anti-lightning, conform to GB/T17626.5 and IEC61000-4-5;
- Support ONVIF; access third party;
- Support various mobile monitoring (iPhone, Android);
- Support cloud technology, easy to achieve network penetration, from in-line and alarm information pushed;


**Parameters:**

Model	IPG-X4-WQ
System structure	dual-core 32-bit DSP (XM530V200) ,pure hard compression ,watch dog
Sensor	1080P 1/2.8" High performance CMOS sensor
Video compression	H.265AI coding, support dual stream, AVI; 0.1M~10Mbps variable
Min. Illumination	Color: 0.01Lux @(F1.2, AGC ON); 0 Lux with IR Black/White: 0.001 Lux @ (F1.2, AGC ON), 0 Lux with IR
Image output	Main stream: 1920*1080@12fps; sub-stream: 800*448@12fps
Shutter	1/50(1/60)s to 1/10,000s
Lens	N/A
Day and night	Support IR-CUT
Noise reduction	Support 2D/3D
Wide dynamic	Support
Auto iris	N/A
Audio compression	G.711 standard compression, support two-way Bidirectional Talk, support for audio and video synchronization
Audio interface	1ch input, level: 2Vp-p, impedance: 1kΩ, support sound pick-up input; 1ch output, impedance: 16Ω, 30mw, support microphone;
Network interface	1 RJ45 Ethernet interface, 10/100M adaptive
Extension interface	N/A
Singal interface	one IR-CUT interface
PTZ interface	One horizontal motor interface, one vertical motor interface
Alarm I/O	N/A
Network interface	supporting wireless network connection
Reset interface	Support
Storage mode	Local TF card, up to 128G; cloud storage
Reliability	Comprehensive lightning protection, 7 * 24 hours 65 °C high temperature stable and reliable testing
Intelligence analysis	Supporting human detection ,support to customizing other intelligent functions
Other function	It supports remote monitoring of mobile client, push message after alarm of human figure detection, and supports MJPEG capture;
ONVIF	support
Mobile monitoring	support
Power	DC12V
Dimension	38mm*54mm

### IPG-X2-WQ

### Interface description



Socket	Specific No	Interface Description	Function
CN2	1	IR-CUT	IR-CUT drive
	2	IR-CUT	IR-CUT drive
J36	1	MIC_N	Microphone signal
	2	MIC_P	Microphone signal
J24	1	5V	5V power supply
	2	GND	GND
	3	IRIN_GPIO7_1	Hard photosensitive input signal
	4	RLED/GPIO2_0	Infrared lamp control signal
	5	WLED/GPIO0_4	White light control signal
J39	1	ETH_LINK_ACT_LED	Network light
	2	ETH_LINK_STA_LED	Network light
	3	ETHTX+	Network interface data
	4	ETHTX-	Network interface data
	5	ETHRX+	Network interface data receiving
	6	ETHRX-	Network interface data receiving
	7	GND	GND
	8	+12V_IN	12V power supply
J20	1	5V	5V power supply
	2	OUT1	Motor drive signal
	3	OUT2	Motor drive signal
	4	OUT3	Motor drive signal
	5	OUT4	Motor drive signal
J34	1	5V	5V power supply
	2	OUT1	Motor drive signal
	3	OUT2	Motor drive signal
	4	OUT3	Motor drive signal
	5	OUT4	Motor drive signal
	1	SPKN	Horn signal
	2	SPKP	Horn signal