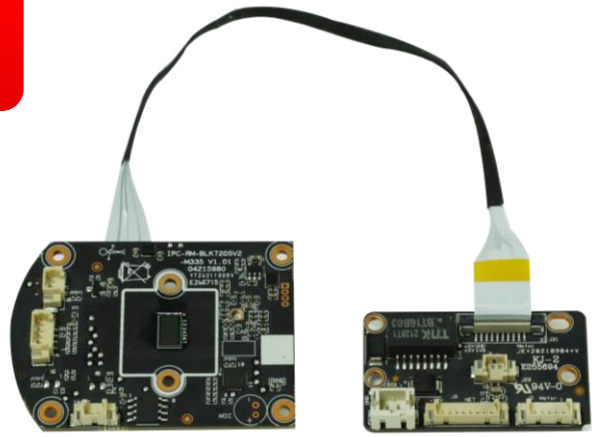


IPG-G3-WQ
3MP WiFi Dome Camera module
Features:

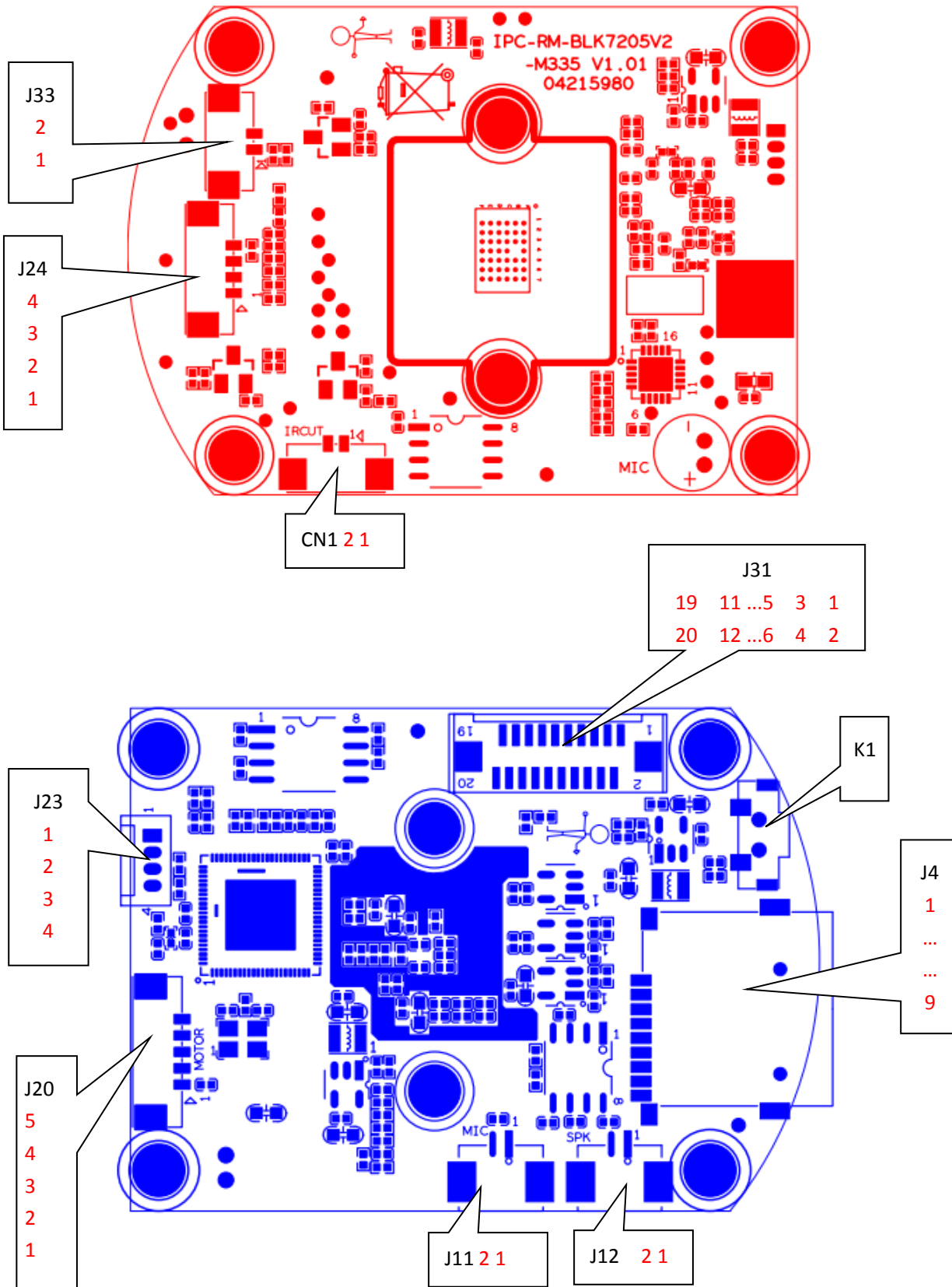
- 3MP resolution,clear and fine images;
- Support for wired and wireless connections
- Supporting human detection;
- Support 2D/3D noise reduction,digital wide dynamic;
- Advanced H.265AI video compression,Super low rate,high definition quality of image;
- Professional anti-lightning,conform to GB/T17626.5 and IEC61000-4-5;
- Support ONVIF;access third party;
- Support various mobile monitoring(iPhone,Android);
- Support cloud technology,easy to achieve network penetration,from in-line and alarm information pushed;


Parameters:

Model	IPG-G3-WQ
System structure	dual-core 32-bit DSP (GK7205V200) ,pure hard compression ,watch dog
Sensor	3MP 1/2.7"SC4239H CMOS sensor
Video compression	H.265AI coding,support dual stream,AVI;0.1M~10Mbps variable
Min.Illumination	Color: 0.01Lux @(F1.2,AGC ON); 0 Lux with IR Black/White: 0.001 Lux @ (F1.2,AGC ON),0 Lux with IR
Image output	Main stream: 2304*1296@12fps; sub-stream: 800*448@12fps
Shutter	1/50(1/60)s to 1/10,000s
Lens	N/A
Day and night	Support IR-CUT
Noise reduction	Support 2D/3D
Wide dynamic	Support
Auto iris	N/A
Audio compression	G.711 standard compression,support two-way Bidirectional Talk,support for audio and video synchronization
Audio interface	1ch input,level:2Vp-p,impedance:1kΩ,support sound pick-up input;1ch output,impedance:16Ω,30mw,support microphone;
Network interface	1 RJ45 Ethernet interface, 10/100M adaptive
Extension interface	N/A
Singal interface	one IR-CUT interface
PTZ interface	One horizontal motor interface, one vertical electrical interface
Alarm I/O	N/A
Network interface	supporting wireless network connection
Reset interface	Support
Storage mode	Local TF card, up to 128G; cloud storage
Reliability	Comprehensive lightning protection, 7 * 24 hours 65 °C high temperature stable and reliable testing
Intelligence analysis	Supporting human detection ,support to customizing other intelligent functions
Other function	It supports remote monitoring of mobile client, push message after alarm of human figure detection, and supports MJPEG capture;
ONVIF	support
Mobile monitoring	support
Power	DC12V
Dimension	38mm*54mm+24mm*42mm

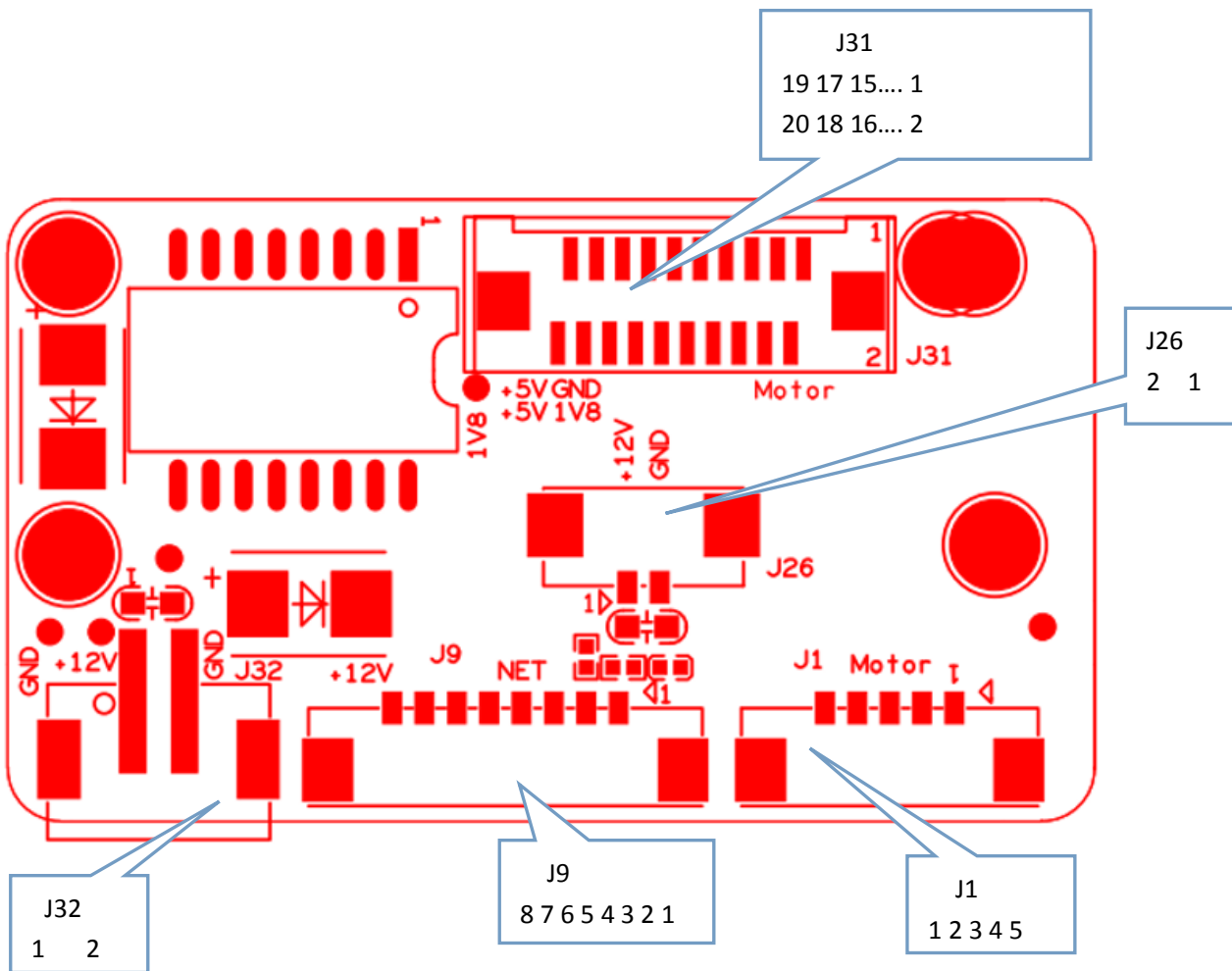
IPG-G3-WQ

Interface description



Socket	Specific No	Interface Description	Function	
J20	1	+5V_M1	Vertical motor power signal	Connected to vertical motor
	2	OUT1	Vertical motor signal	
	3	OUT2	Vertical motor signal	
	4	OUT3	Vertical motor signal	
	5	OUT4	Vertical motor signal	
J11	1	AC_IN	Microphone signal input	Connect the microphone
	2	GND	GND	
J23	1	GND	GND	Serial port debugging seat
	2	UART0_TXD	UART	
	3	UART0_RXD	UART	
	4	NC	NC	
J31	1	OUT1	Horizontal motor signal	Interface board
	2	OU2	Horizontal motor signal	
	3	OU3	Horizontal motor signal	
	4	OU4	Horizontal motor signal	
	5	GND	GND	
	6	KEY_SET	Reset button	
	7	GND	GND	
	8	WIFI_PDN	WIF IPower control signal	
	9	WIFI_DN	WiFi signal negative	
	10	WIFI_DP	WiFi signal positive	
	11	GND	GND	
	12	TPTX-	Network data transmission -	
	13	TPTX+	Network data transmission +	
	14	GND	GND	
	15	TPRX+	Network data transmission +	
	16	TPRX-	Network data transmission -	
	17	GND	GND	
	18	NC	NC	
	19	+5V	5V power output	
	20	+5V	5V power output	
J4	1	SD_DATA2	SD card data data2	Connected to SD card
	2	SD_DATA3	SD card data data3	
	3	SD_CMD	command	
	4	3V3_SD	SD card power supply 3.3V	
	5	SD_CLK	SD card clock	
	6	GND	GND	
	7	SD_DATA0	SD card data DATA0	
	8	SD_DATA1	SD card data DATA1	

	9	SD_CDTCT	SD card detection	
J24	1	5V	5V	Light receiving board
	2	GND	GND	
	3	IRIN_GPIO1_7	Photosensitive signal acquisition port	
	4	LED_GPIO1_6	indicator light	
J33	1	WLED/GPIO0_4	White light control	Connected to IRCUT
	2	RLED/GPIO2_0	Red light control	
CN1	1	IRCUTB	IR_CUT wiring B	Connect horn
	2	IRCUTA	IR_CUT wiring B	
J12	1	SPKN	Horn signal -	Connect horn
	2	SPKP	Horn signal +	



Socket	Specific No	Interface Description	Function
J31	1	OUT1	Motor signal
	2	OUT2	Motor signal
	3	OUT3	Motor signal
	4	OUT4	Motor signal
	5	GND	GND
	6	KEY_SET	Reset button
	7	GND	GND
	8	WIFI_PDN	WiFi power control signal
	9	WIFI_DN	USB negative
	10	WIFI_DP	USB positive
	11	GND	GND
	12	TPTX-	Network port transmission
	13	TPTX+	Network port transmission
	14	GND	GND
	15	TPRX+	Network port receiving signal
	16	TPRX-	Network port receiving signal
	17	GND	GND
	18	1V8	1V8 Power Supply
	19	+5V	5V Power Supply
	20	+5V	5V Power Supply
J1	1	+5V	5V Power Supply
	2	OUT1	Horizontal motor signal
	3	OUT2	Horizontal motor signal
	4	OUT3	Horizontal motor signal
	5	OUT4	Horizontal motor signal
J9	1	KEY_SET	Reset button
	2	Led	Network port light signal
	3	ETHTX+	Network transformer transmission signal line
	4	ETHTX-	Network transformer transmission signal line
	5	ETHRX+	Network transformer receiving signal line
	6	ETHRX-	Network transformer receiving signal line

	7	GND	GND
	8	12V	12V Power Supply
J32	1	12V	12V Power Supply
	2	GND	GND
J26	1	12V	12V Power Supply
	2	GND	GND