

IPG-85X20PSE-WPN

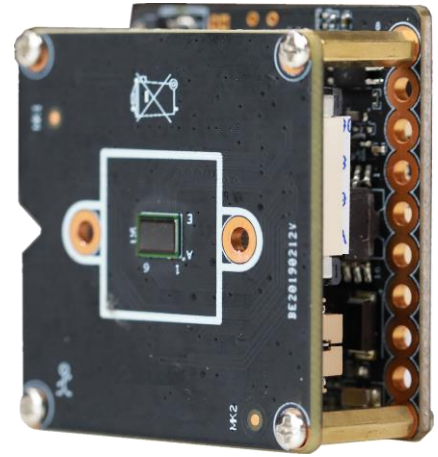
2.0M Black light illumination dual-line network camera module

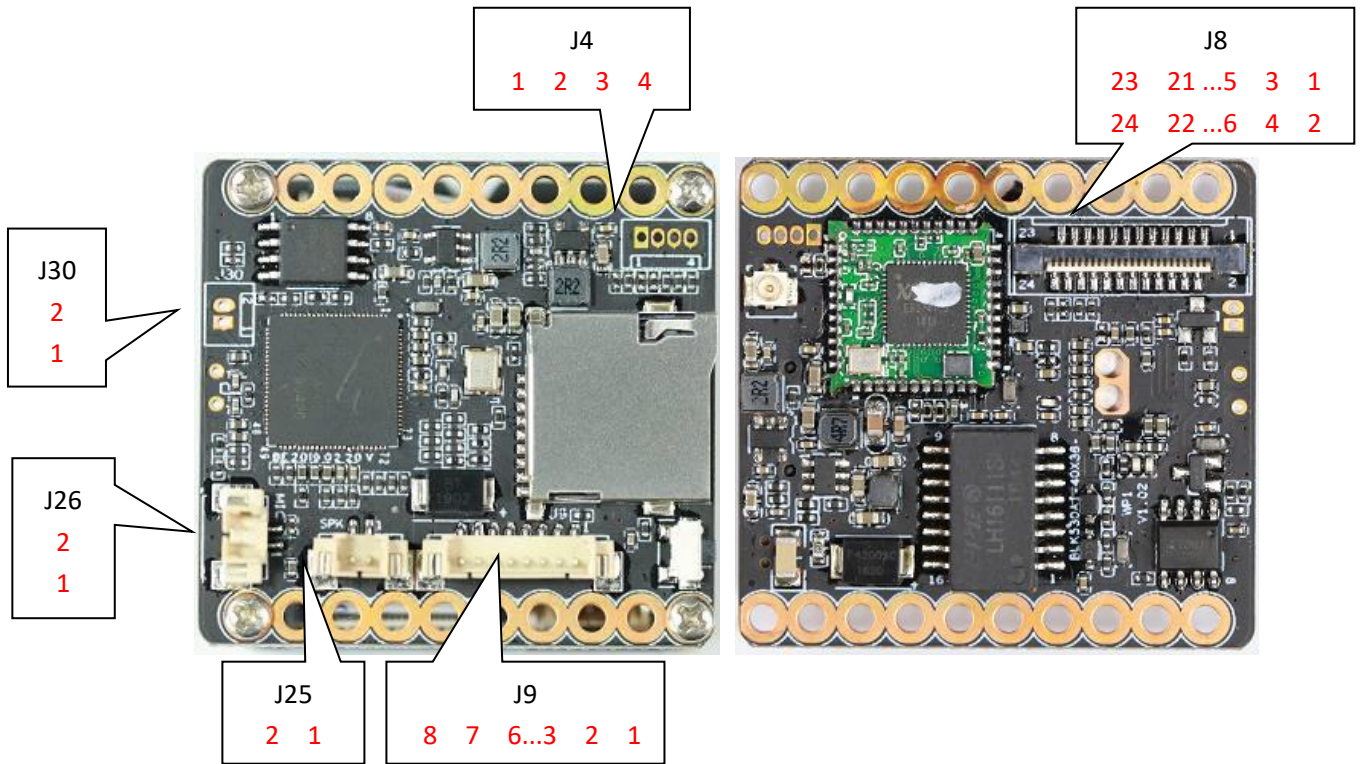
Features:

- 2.0M resolution, Black light illumination clear and fine images;
- Support for wired and wireless connections
- Support 2D/3D noise reduction,digital wide dynamic;
- Advanced H.265A1/H.265+ (Compatible with H.265/H.264) video compression,Super low rate,high definition quality of image;
- Professional anti-lightning,conform to GB/T17626.5 and IEC61000-4-5。
- Support mobile phone monitoring(iOS, Android);
- Provide web、CMS、 provide SDK development
- Support cloud technology,easy to achieve network penetration,fro in-line and alarm information pushed

Parameters:

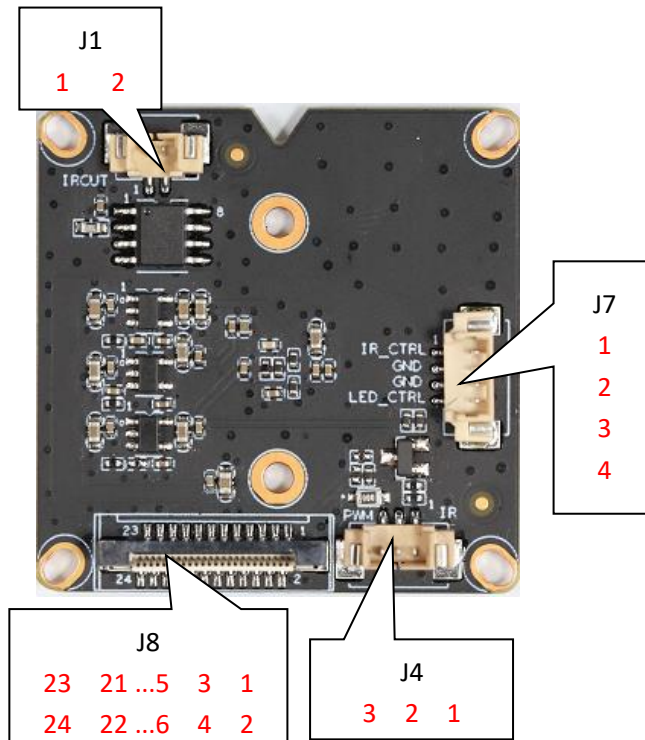
Model	IPG-85X20PSE-WPN
System structure	Embedded RTOS, dual-core 32-bit DSP (XM530),pure hard compression ,watch dog
Sensor	2.0M 1/2.9"SC307E Black light illumination CMOS sensor ,color 0.0001Lux@F1.2,black/white 0.0001Lux@F1.2
Video compression	H.265X coding,support dual stream,AVI;0.1M~8Mbps variable
Image output	Main stream: 1920*1080@12fps; sub-stream: 640*360@12fps
Shutter	1/50(1/60)s to 1/10,000s
Lens	N/A
Day and night	Support IR-CUT
Noise reduction	Support 2D/3D
Wide dynamic	Support
Auto iris	N/A
Audio compression	G.711 standard compression,support two-way Bidirectional Talk,support for audio and video synchronization
Audio interface	1ch input,level:2Vp-p,impedance:1kΩ,support sound pick-up input;1ch output,impedance:16Ω,30mw,support microphone;
Network interface	1 RJ45 Ethernet interface, 10/100M adaptive; Support for network protocols such as RTSP/FTP/PPPOE / DHCP/DDNS / NTP/UPnP
Extension interface	N/A
Singal interface	one IR-CUT interface
PTZ	N/A
Motor interface	N/A
Alarm I/O	N/A
WIFI interface	Supports wireless connections
Reset interface	Support
SD Card	Support Maximum128G
Reliability	Comprehensive lightning protection, 7 * 24 hours 65 °C high temperature stable and reliable testing
Intelligence analysis	Supporting human detection and customizing other intelligent functions
Other function	Support WEB,OSD,live video transmission,motion detect and IO alarm,front-end storage/playback/download, and center reminder and image linkage,support JPEG capture: united remote client monitoring sofaware、MYEYE;perfect SDK;
ONVIF	Support
Mobile monitoring	Support multiple mobile monitoring (iOS, Android)
Power	DC5V-12V
Dimension	38mm*40mm+38mm*38mm
Other	Does not accept any custom.





Socket	Specific No	Interface Description	Function	
J9	1	KEY_SET	KEY_SET	Connect the tail line of the camera module
	2	LED1	LED/PHY_AD1	
	3	ETHTX+	Ethernet signal+	
	4	ETHTX-	Ethernet signal-	
	5	ETHRX+	Ethernet signal+	
	6	ETHRX-	Ethernet signal-	
	7	GND	GND	
	8	12V	12V DC input	
J26	1	MICIN	MIC IN-	Connect the pickup
	2	MICIP	MIC IP+	
J25	1	SPKN	SPKN-	Connect the speakers
	21	SPKP	SPKP+	
J30	1	RTC_BAT	RTC_BAT	Connect the RTC Battery
	2	GND	GND	
J4	1	GND	GND	Serial port debugging seat
	2	UART0_TXD	UART0_TXD	
	3	UART0_RXD	UART0_RXD	
	4	BOOTSEL_0	BOOTSEL_0	
J8	1	I_MIPI_DATA1N	I_MIPI_DATA1N	Connect the sensor module
	2	I_MIPI_DATA1P	I_MIPI_DATA1P	
	3	I_MIPI_DATA2N	I_MIPI_DATA2N	
	4	I_MIPI_DATA2P	I_MIPI_DATA2P	

5	I_MIPI_DATA3N	I_MIPI_DATA3N
6	I_MIPI_DATA3P	I_MIPI_DATA3P
7	I_MIPI_CLKP	I_MIPI_CLKP
8	I_MIPI_CLKN	I_MIPI_CLKN
9	I_MIPI_DATA0P	I_MIPI_DATA0P
10	I_MIPI_DATA0N	I_MIPI_DATA0N
11	GND	GND
12	ADC1_IN	ADC1_IN
13	SEN0_MCLK	SEN0_MCLK
14	GND	GND
15	SDA	SDA
16	SCL	SCL
17	IRCUT_A	IRCUT_A
18	IRCUT_B	IRCUT_B
19	IR_CTRL/ALARM_IN	IR_CTRL/ALARM_IN
20	GND	GND
21	LED_CTRL/ALARM_OUT	LED_CTRL/ALARM_OUT
22	PWM	PWM
23	GND	GND
24	+5V	+5V



Socket	Specific No	Interface Description	Function	
J1	1	IR_CUTA	IR-CUT Control line A	Connect IR-CUT
	2	IR_CUTB	IR-CUT Control line B	
J4	1	IR	IR	Infrared signal
	2	GND	GND	

	3	PWM	PWM	input
J7	1	IR_CTRL/ALARM_IN	IR_CTRL/ALARM_IN	GPIO
	2	GND	GND	
	3	GND	GND	
	4	LED_CTRL/ALARM_OUT	LED_CTRL/ALARM_OUT	
J8	24	I_MIPI_DATA1N	I_MIPI_DATA1N	Connect the main module
	23	I_MIPI_DATA1P	I_MIPI_DATA1P	
	22	I_MIPI_DATA2N	I_MIPI_DATA2N	
	21	I_MIPI_DATA2P	I_MIPI_DATA2P	
	20	I_MIPI_DATA3N	I_MIPI_DATA3N	
	19	I_MIPI_DATA3P	I_MIPI_DATA3P	
	18	I_MIPI_CLKP	I_MIPI_CLKP	
	17	I_MIPI_CLKN	I_MIPI_CLKN	
	16	I_MIPI_DATA0P	I_MIPI_DATA0P	
	15	I_MIPI_DATA0N	I_MIPI_DATA0N	
	14	GND	GND	
	13	ADC1_IN	ADC1_IN	
	12	SEN0_MCLK	SEN0_MCLK	
	11	GND	GND	
	10	SDA	SDA	
	9	SCL	SCL	
	8	IRCUT_A	IRCUT_A	
	7	IRCUT_B	IRCUT_B	
	6	IR_CTRL/ALARM_IN	IR_CTRL/ALARM_IN	
	5	GND	GND	
4	LED_CTRL/ALARM_OUT	LED_CTRL/ALARM_OUT		
3	PWM	PWM		
2	GND	GND		
1	+5V	+5V		