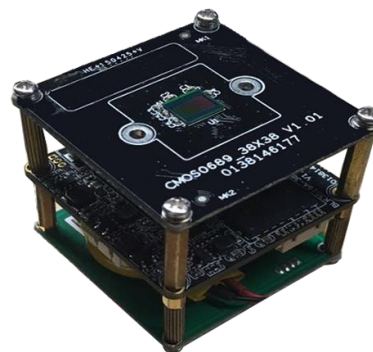
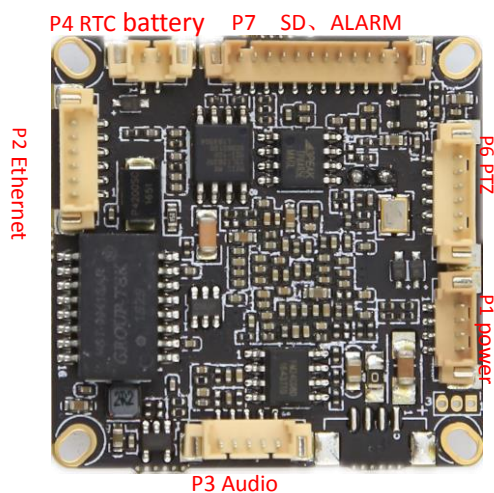
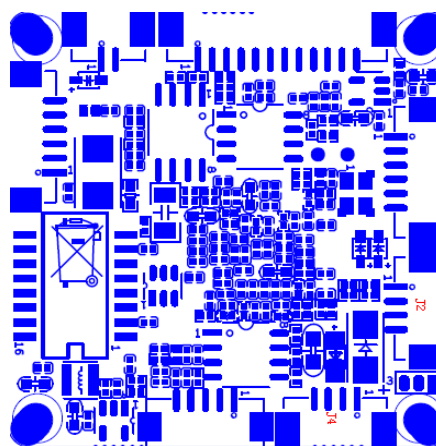
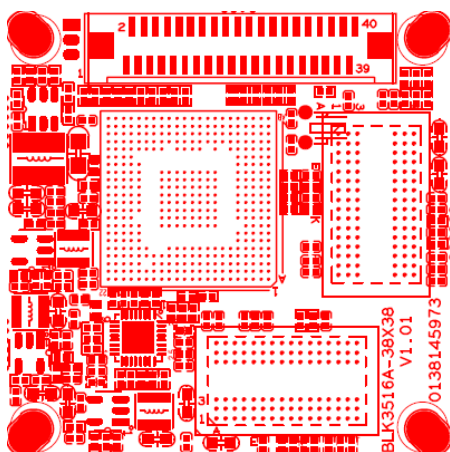


IPG-83H40PL-P
Features:

- 4MP、3MP HD resolution,clear and fine images;
- Support 2D/3D noise reduction,digital wide dynamic;
- Advanced H.265/H.264 video compression;
- Super low rate,high definition quality of image;
- Professional anti-lightning,conform to GB/T17626.5 and IEC61000-4-5.
- Support cloud technology,easy to achieve network penetration, fro in-line and alarm information pushed
- Support ONVIF
- Provide web、CMS、center platform management software MYEYE,provide SDK development


Parameters:

Model	IPG-83H40PL-P
System structure	Embedded RTOS,dual-core 32bit DSP(Hi3516D),pure hard compression ,watch dog
Sensor	4.0M 1/3" OV4689 low illumination CMOS; color 0.01Lux@F1.2,black/white 0.001Lux@F1.2
Video compression	H.265/H.264,support dual stream,AVI;0.1M~10Mbps variable;1~30f/s variable
Image output	Main stream:4MP 2560*1440@25fps,3MP 2048*1536@25fps;sub-stream: 704*576 @15fps
Day and night	Support IR-CUT, IR-CUT coil has an internal resistance of 20 ohms, the power-on time is less than 200ma, and the voltage is 3.5V-6V
Noise reduction	Support 2D/3D
Wide dynamic	Support DWDR;
Audio interface	1ch input,level:2Vp-p,impedance:1kΩ,support sound pick-up input;1ch output,impedance:16Ω,30mw,support microphone;
Audio compression	G.711,support bidirectional talk,audio&video synchronization;
Network interface	1*RJ45 10/100M adaptive Ethernet port;support RTSP/FTP/PPPOE/DHCP/DDNS/NTP/UPnP etc
USB interface	1*USB,support WIFI/3G
Auto iris	One auto iris interface,support DC drive
Singal interface	One photo resistance interface,one IR-CUT interface ,support photo resistance signal and IR-CUT links to IR
PTZ	1*RS485,support kinds of PZT protocols
Alarm I/O	2/1 (support alarm input and video link to background)
SD Card	Support
Reliability	Comprehensive lightning protection, in line with national and international standards; 7 * 24 hours 65 °C high temperature stable and reliable testing (including mounted machine testing)
Other function	Support WEB,OSD,live video transmission,motion detect and IO alarm,front-end storage/playback/download, and center reminder and image linkage,support JPEG capture; united remote client monitoring sofaware、MYEYE;perfect SDK;
ONVIF	Support
Mobile monitoring	Support multiple mobile monitoring (iOS, Android)
Other	DC12V/2A input, power consumption:≤3W,dimension 38mm*38mm, The drive voltage of the light board is at 3.3V



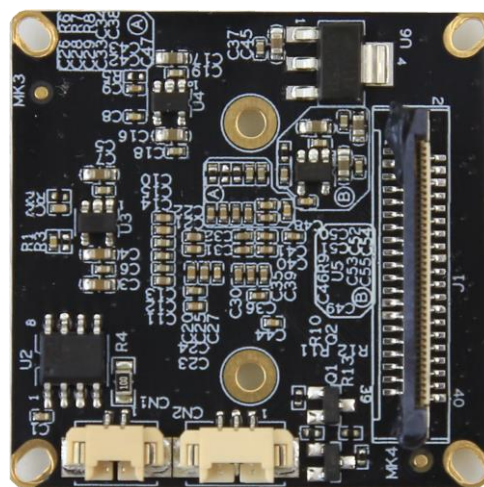
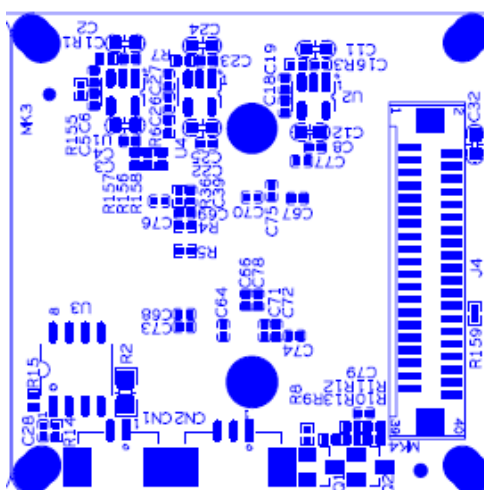
sign	Socket	Specific No	Interface Description	Function
P1	J2	1	NC	Undefined
		2	NC	Undefined
		3	GND	GND
		4	+12V	12V DC input
P2	J8	1	ETHTR-	Ethernet signal
		2	ETHTR+	Ethernet signal
		3	LED/PHY_AD3	LED
		4	ETHTX-	Ethernet signal
		5	ETHTX+	Ethernet signal
		6	LED/PHY_AD0	LED
P3	J6	1	GND	GND
		2	VDAC_CVBS	VDAC_CVBS
		3	AGND	AGND
		4	AC_OURL	speaker_OUT
		5	AC_LINEL	MIC_P
P4	J7	1	GND	GND
		2	VBAT	VBAT
P5	J3	1	UART_RXD	



		2	UART_TXD	
		3	GND	GND
P6	J4	1	GND	GND
		2	USB_DP	USB_DP
		3	USB_DM	USB_DM
		4	+5V	+5V
P7	CN1	1	ALARM_IN1	ALARM_IN1
		2	GND	GND
		3	ALARM_IN2	ALARM_IN2
		4	GND	GND
		5	RS485A	RS485A
		6	RS485B	RS485B
P9	J1	1	(12v)	12V DC input
		2	(12v)	12V DC input
		3	GND	GND
		4	GND	GND
		5	(5v)	5V DC input
		6	GND	GND
		7	DOUT7	Video signal output
		8	DOUT6	Video signal output
		9	DOUT5	Video signal output
		10	DOUT4	Video signal output
		11	DOUT3	Video signal output
		12	DOUT2	Video signal output
		13	DOUT1	Video signal output
		14	DOUT0	Video signal output
		15	VIDEOIN_HD	VIDEOIN_HD
		16	VIDEOIN_PCLK	VIDEOIN_PCLK
		17	VIDEOIN_VD	VIDEOIN_VD
		18	GND	GND
		19	NC	NC
		20	SCL	SCL
		21	NC	NC
		22	MCBSP_DR_SPI1_EN	SPI
		23	NC	NC
		24	REDCTRL	REDCTRL
		25	GND	GND
		26	GND	GND
		27	GND	GND
		28	1.8V output	1.8V output
		29	SDA	I2C SDA
		30	NC	NC
		31	NC	NC



		32	NC	NC
		33	NC	NC
		34	DOUT11	Video signal output
		35	DOUT10	Video signal output
		36	DOUT9	Video signal output
		37	DOUT8	Video signal output
		38	IRCUT	IRCUT
		39	IRCUT	IRCUT
		40	GND	GND



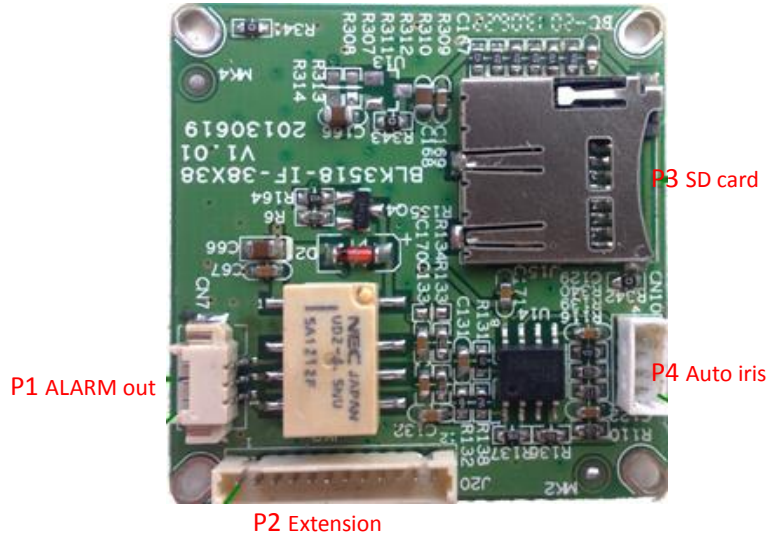
P1 Extension interface

P3 IR-CUT P2 Infrared

P1	J4	1	(12v)	12V DC input
		2	(12v)	12V DC input
		3	GND	GND
		4	GND	GND
		5	(5v)	5V DC input
		6	GND	GND
		7	DOUT7	Video signal output
		8	DOUT6	Video signal output



		9	DOUT5	Video signal output
		10	DOUT4	Video signal output
		11	DOUT3	Video signal output
		12	DOUT2	Video signal output
		13	DOUT1	Video signal output
		14	DOUT0	Video signal output
		15	VIDEOIN_HD	VIDEOIN_HD
		16	VIDEOIN_PCLK	VIDEOIN_PCLK
		17	VIDEOIN_VD	VIDEOIN_VD
		18	GND	GND
		19	NC	NC
		20	SCL	SCL
		21	NC	NC
		22	MCBSP_DR_SPI1_EN	SPI
		23	NC	NC
		24	REDCTRL	REDCTRL
		25	GND	GND
		26	GND	GND
		27	GND	GND
		28	1.8V DC input	1.8V DC input
		29	SDA	I2C SDA
		30	NC	NC
		31	NC	NC
		32	NC	NC
		33	NC	NC
		34	DOUT11	Video signal output
		35	DOUT10	Video signal output
		36	DOUT9	Video signal output
		37	DOUT8	Video signal output
		38	IRCUT	IRCUT
		39	IRCUT	IRCUT
		40	GND	GND
P2	CN2	1	Led	Led
		2	GND	GND
		3	NC	NC
P3	CN1	1	IRCUT	IRCUT input control
		2	IRCUT	IRCUT input control



sign	Socket	Specific No	Interface Description	Function
P1	CN7	1	ALARM NO	ALARM output
		2	ALARM COM	ALARM COM
		3	GND	GND
P2	J20	1	GND	GND
		2	5V	5V DC input
		3	3.3V	3.3V DC input
		4	GPIO32	ALARM output
		5	GPIO53	PWM output
		6	-	-
		7	SD_CLK	SD_CLK
		8	SD_CMD	SD_CMD
		9	SD_DATA3	SD_DATA3
		10	SD_DATA2	SD_DATA2
		11	SD_DATA1	SD_DATA1
		12	SD_DATA0	SD_DATA0
P4	CN10	1	IRIS_CON-	IRIS_CON-
		2	IRIS_CON+	IRIS_CON+
		3	IRIS_DRV	IRIS_DRV
		4	GDN	GDN