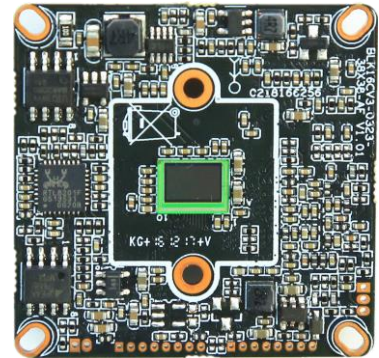


**IPG-83H20PY-S**

**2.0M Low illumination CMOS Network Camera**

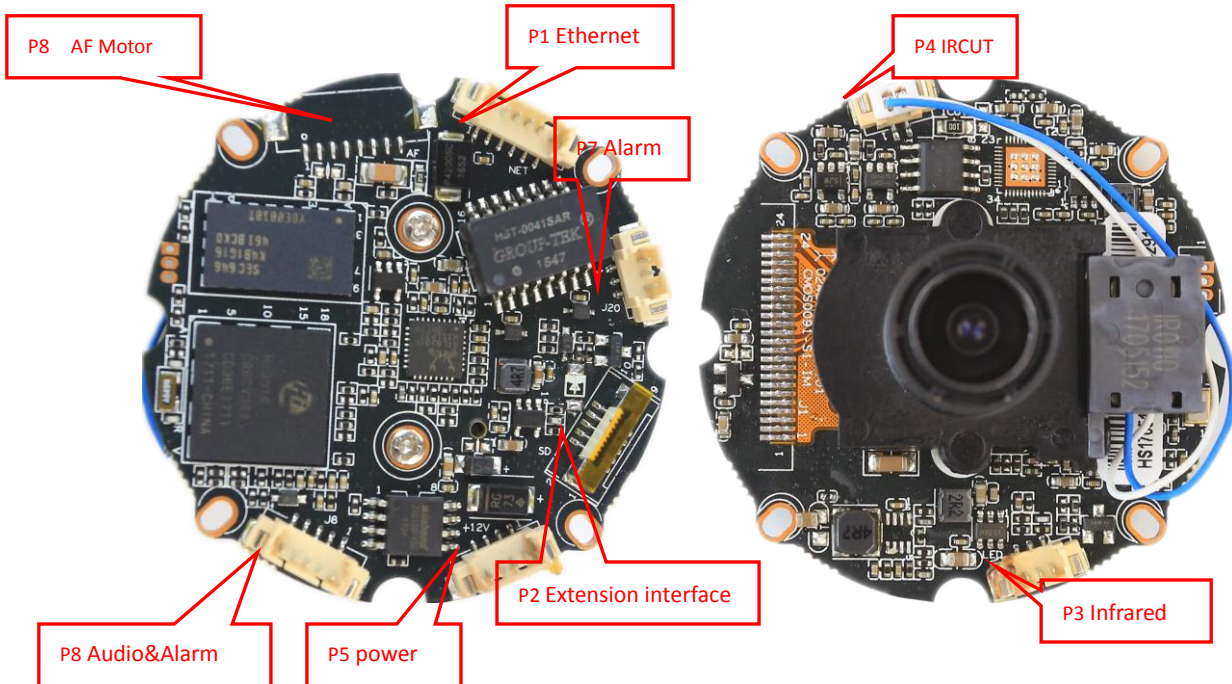
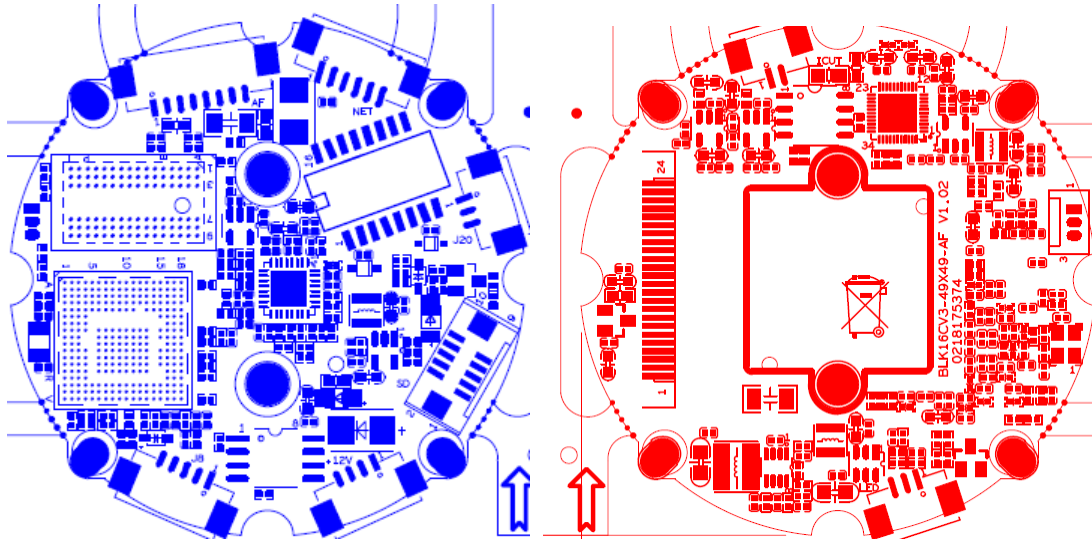
**Features:**

- 2M HD resolution,clear and fine images;
- Support 2D/3D noise reduction,digital wide dynamic;
- Advanced H.265/H.264 video compression,Super low rate,high definition quality of image;
- Professional anti-lightning,conform to GB/T17626.5 and IEC61000-4-5.
- Support ONVIF ,access third party;
- Support various mobile monitoring(iPhone,Android);
- Provide web、CMS、 center platform management software MYEYE,provide SDK development
- Support cloud technology,easy to achieve network penetration,fro in-line and alarm information pushed



**Parameters:**

Model	IPG-83H20PY-S
System structure	Embedded RTOS,dual-core 32bit DSP(Hi3516CV300),pure hard compression ,watch dog
Sensor	2.0M 1/2.9" IMX323 Low illumination CMOS sensor ,color 0.01Lux@F1.2,black/white 0.001Lux@F1.2
Video compression	H.265/H.264,support dual stream,AVI;0.1M~8Mbps variable;1~30f/s variable
Image output	Main stream: 1920*1080@25fps, 1280*720@25fps; sub-stream: 704*576@25fps;
Shutter	1/50(1/60)s to 1/10,000s
Lens	No
Day and night	Support IR-CUT, IR-CUT coil has an internal resistance of 20 ohms, the power-on time is less than 200ma, and the voltage is 3.5V-6V
Noise reduction	Support 2D/3D
Wide dynamic	Support
Auto iris	N/A
Audio compression	N/A
Audio interface	N/A
Network interface	1*RJ45 10/100M adaptive Ethernet port;support RTSP/FTP/PPPOE/DHCP/DDNS/NTP/UPnP etc
Extension interface	N/A
Singal interface	One photo resistance interface,one IR-CUT interface ,support photo resistance signal and IR-CUT links to IR
PTZ	N/A
Motor interface	No
Alarm I/O	N/A
WIFI interface	N/A
Reset interface	N/A
SD Card	N/A
Reliability	Comprehensive lightning protection, 7 * 24 hours 65 °C high temperature stable and reliable testing
Intelligence analysis	N/A
Other function	Support WEB,OSD,live video transmission,motion detect and IO alarm,front-end storage/playback/download, and center reminder and image linkage,support JPEG capture; united remote client monitoring sofaware、MYEYE;perfect SDK;
ONVIF	Support
Mobile monitoring	Support multiple mobile monitoring (iOS, Android)
Power	DC12V/2A input, power consumption:≤3W,
Dimension	38mm*38mm
Other	Support POE power supply (optional) not support any custom . The drive voltage of the light board is at 3.3V



sign	Socket	Specific No	Interface Description	Function
P1	J3	1	ETHRX-	Ethernet signal
		2	ETHRX+	Ethernet signal
		3	LED/PHY_AD3	LED
		4	ETHTX-	Ethernet signal
		5	ETHTX+	Ethernet signal
		6	LED/PHY_ADO	LED
P2	J19	1	SD_CLK	SD_CLK
		2	SD_CMD	SD_CMD
		3	SD_DATA0	SD_DATA0
		4	SD_DATA1	SD_DATA1
		5	SD_DATA2	SD_DATA2
		6	SD_DATA3	SD_DATA3



		7	GND	GND
		8	GND	GND
		9	+5V	+5V OUT
		10	BAT	RTC
P3	J2	1	Infrared IN	Infrared IN
		2	GND	GND
		3	NC	NC
P4	J4	1	BOUT	IRcut
		2	AOUT	IRcut
P5	J7	1	NC	NC
		2	NC	NC
		3	GND	GND
		4	12V	12V IN
P6	J6	1	GND	GND
		2	UART_TX	UART_TX
		3	UART_RX	UART_RX
P7	J20	1	ALARM_OUT	ALARM_OUT
		2	GND	GND
		3	ALARM_IN	ALARM_IN
P8	J8	1	AC_OUT	AC_OUT
		2	AC_IN	AC_IN
		3	GND	GND
		4	ALARM_IN2	ALARM_IN2
		5	GND	GND
P9	J17	1	OUT1	AF Motor driven
		2	OUT3	AF Motor driven
		3	OUT4	AF Motor driven
		4	OUT5	AF Motor driven
		5	OUT6	AF Motor driven
		6	OUT7	AF Motor driven
		7	OUT8	AF Motor driven
		8	OUT9	AF Motor driven