

## IPG-80X20PTA-WPNG

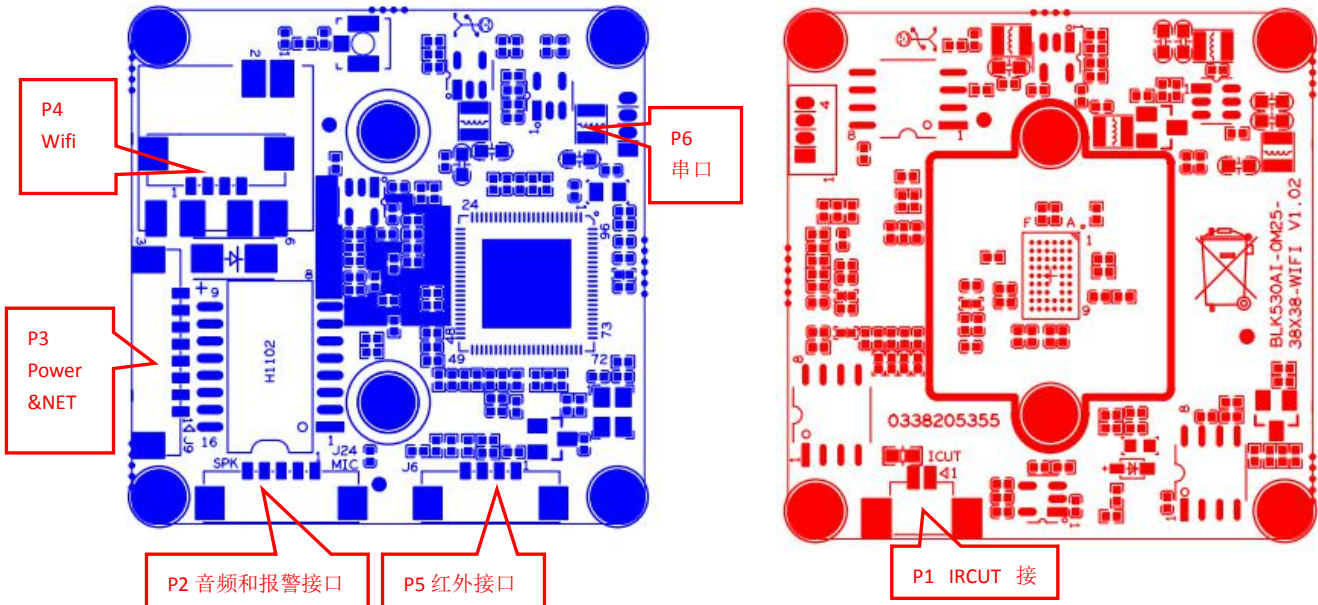
### 2.0M Wireline-WiFi IP camera Module

**Features:**

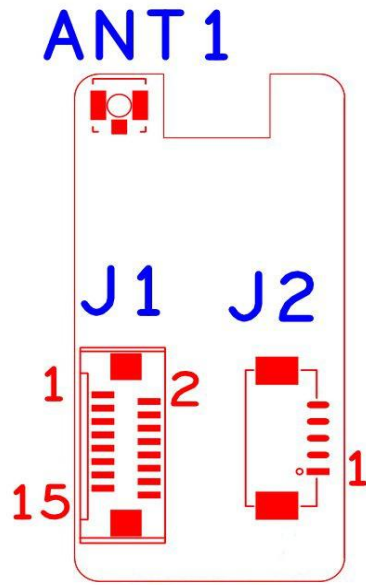
- Support 450m signal stable connection in open environment, excellent through wall performance WiFi chip, strong anti-interference
- Supporting human detection and face detection,support to customize intelligent functions
- 2.0M resolution,clear and fine images;
- Support for wired and wireless connections
- Support 2D/3D noise reduction,digital wide dynamic;
- Advanced H.265+ video compression,Super low rate,high definition quality of image;
- Professional anti-lightning,conform to GB/T17626.5 and IEC61000-4-5。
- Support matching WIFI NVR board, recommend to cooperate with NBD8004RA-UWG NVR board to achieve 450m;


**Parameters:**

|                       |  |
|-----------------------|--|
| Model                 | IPG-80X20PTA-WPNG  |
| System structure      | Embedded RTOS, dual-core 32-bit DSP (XM530AI),pure hard compression ,watch dog   |
| Sensor                | 2.0M 1/3"F37H CMOS sensor,color 0.1Lux@F1.2,black/white 0.01Lux@F1.2   |
| Video compression     | H.265+ coding,support dual stream,AVI;0.1M~6Mbps variable  |
| Image output          | Main stream: 1920*1080@15fps; sub-stream: 640*360@15fps  |
| Shutter               | 1/50(1/60)s to 1/10,000s   |
| Lens                  | N/A  |
| Day and night         | Support IR-CUT,IR-CUT coil has an internal resistance of 20 ohms, the power-on time is less than 200ma, and the voltage is 3.5V-6V |
| Noise reduction       | Support 2D/3D  |
| Wide dynamic          | Support  |
| Auto iris             | N/A  |
| Audio compression     | G.711 standard compression,support two-way Bidirectional Talk,support for audio and video synchronization                          |
| Audio interface       | 1ch input,level:2Vp-p,impedance:1kΩ,support sound pick-up input;1ch output,impedance:16Ω,30mw,support microphone;                  |
| Network interface     | 1 RJ45 Ethernet interface, 10/100M adaptive  |
| Extension interface   | N/A  |
| Singal interface      | one IR-CUT interface   |
| PTZ                   | N/A  |
| Motor interface       | N/A  |
| Alarm I/O             | N/A  |
| WIFI interface        | Supports 450 meters wireless connections   |
| Reset interface       | N/A  |
| SD Card               | N/A  |
| Reliability           | Comprehensive lightning protection, 7 * 24 hours 65 ℃ high temperature stable and reliable testing                                 |
| Intelligence analysis | Supporting human detection and face detection , support to customizing other intelligent functions                                 |
| Other function        | Support IO alarm,front-end storage/playback/download, and center reminder and image linkage,support JPEG capture;perfect SDK;      |
| ONVIF                 | Unsupport  |
| Mobile monitoring     | Unsupport  |
| Power                 | DC5V-12V   |
| Dimension             | 38mm*38mm+38mm*19mm  |
| Other                 | The drive voltage of the light board is at 3.3V  |



| Socket |     | Specific No | Interface Description |                               |
|--------|-----|-------------|-----------------------|-------------------------------|
| P1     | J5  | 1           | IR-CUT                | IR-CUT A OUT                  |
|        |     | 2           | IR-CUT                | IR-CUT B OUT                  |
| P6     | J4  | 1           | GND                   | GND                           |
|        |     | 2           | UATRO_TXD             | UATRO_TXD                     |
|        |     | 3           | UATRO_RXD             | UATRO_RXD                     |
|        |     | 4           | BOOTSEL_0             | BOOTSEL_0                     |
| P5     | J6  | 1           | PWM                   | PWM-OUT                       |
|        |     | 2           | LED_CTRL              | Infrared lamp control signal  |
|        |     | 3           | ADC1_IN               | Infrared light signal control |
|        |     | 4           | GND                   | GND                           |
| P3     | J9  | 1           | KEY_SET               | KEY_SET                       |
|        |     | 2           | LED/PHY_AD1           | LED/PHY_AD1                   |
|        |     | 3           | ETHTX+                | ETHTX+                        |
|        |     | 4           | ETHTX-                | ETHTX-                        |
|        |     | 5           | ETHRX+                | ETHRX+                        |
|        |     | 6           | ETHRX-                | ETHRX-                        |
|        |     | 7           | GND                   | GND                           |
|        |     | 8           | 12V 输入                | 12V INPUT                     |
| P2     | J24 | 1           | MICN                  | MIC                           |
|        |     | 2           | MICP                  | MIC                           |
|        |     | 3           | GND                   | GND                           |
|        |     | 4           | SPKP                  | loudspeaker                   |
|        |     | 5           | SPKN                  | loudspeaker                   |
| P4     | J25 | 1           | 3V3                   | 3V3                           |
|        |     | 2           | WIFI_DN               | WIFI DATA                     |
|        |     | 3           | WIFI_DP               | WIFI DATA                     |
|        |     | 4           | GND                   | GND                           |



| Socket | Specific No | Interface Description | Function                     |
|--------|-------------|-----------------------|------------------------------|
| J2     | 1           | GND                   | 5P1.25mm WIFI Expansion seat |
|        | 2           | USB_DP                |                              |
|        | 3           | USB_DM                |                              |
|        | 4           | +5V                   |                              |
|        | 5           | USB_CTRL              |                              |
| ANT1   | 1           |                       | IPEXAntenna interface        |

PS: USB\_CTRL is the power supply control pin of the WIFI module. Low level enables power supply.