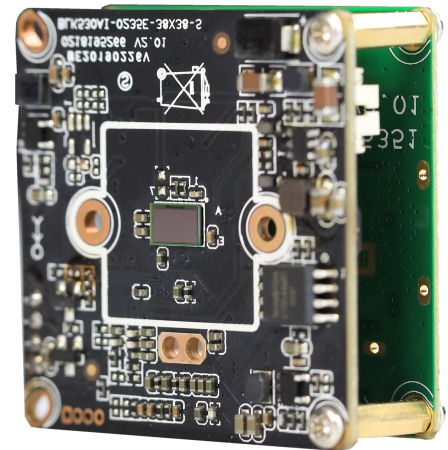


## IPG-80X20PSD-WPNE

### 2.0M Wireline-WiFi IP camera Module

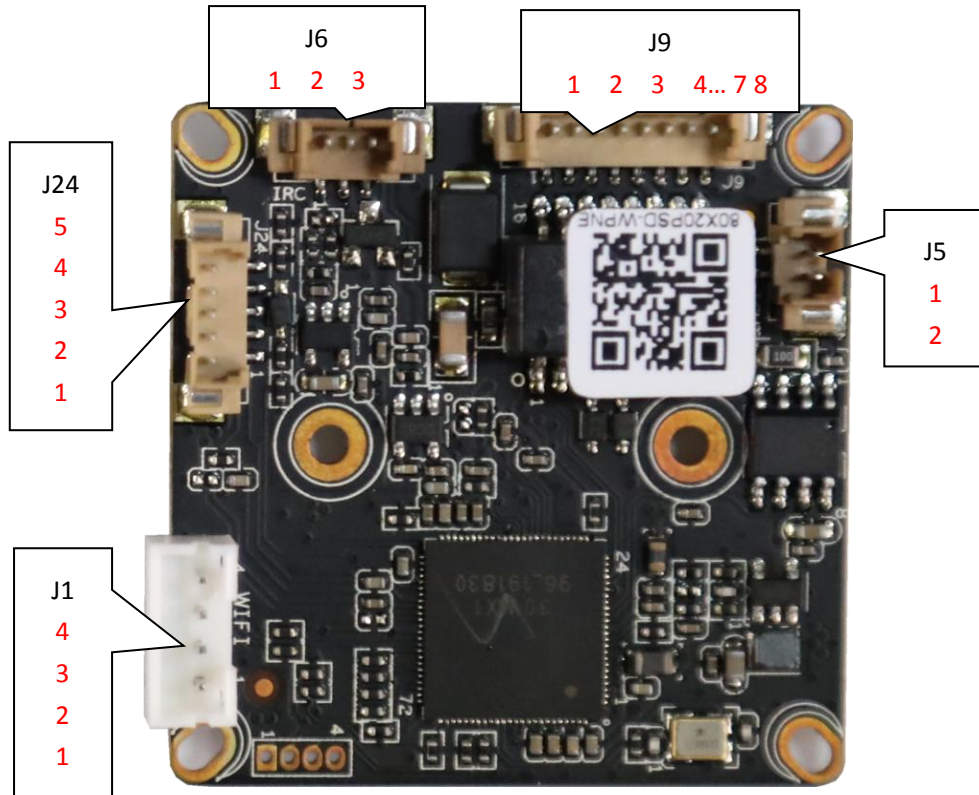
#### Features:

- Supporting human detection and supports intelligent functions
- 2.0M resolution,clear and fine images;
- Support for wired and wireless connections
- Support 2D/3D noise reduction,digital wide dynamic;
- Advanced H.265+ video compression,Super low rate,high definition quality of image;
- Professional anti-lightning,conform to GB/T17626.5 and IEC61000-4-5。
- Support matching WIFI NVR board, recommend to cooperate with NBD8004RA-UWSE NVR board to achieve 500m;



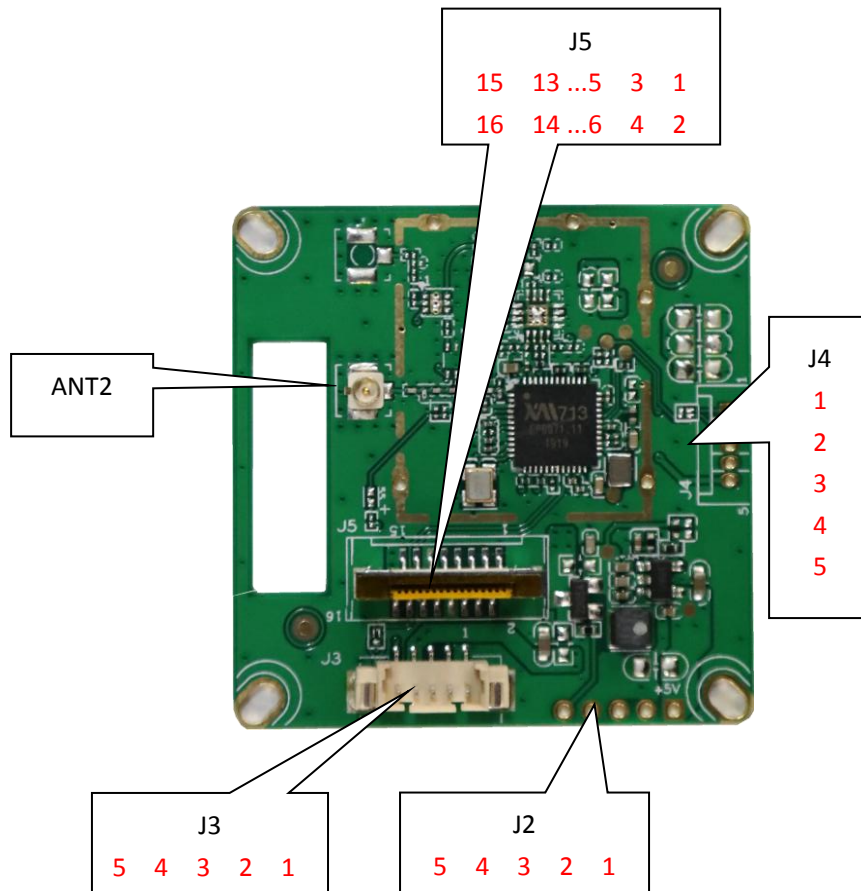
#### Parameters:

Model	IPG-80X20PSD-WPNE
System structure	Embedded RTOS, dual-core 32-bit DSP (XM530AI),pure hard compression ,watch dog
Sensor	2.0M 1/3" SC2235E CMOS sensor,color 0.1Lux@F1.2,black/white 0.01Lux@F1.2
Video compression	H.265+ coding,support dual stream,AVI;0.1M~6Mbps variable
Image output	Main stream: 1920*1080@15fps; sub-stream: 640*360@15fps
Shutter	1/50(1/60)s to 1/10,000s
Lens	N/A
Day and night	Support IR-CUT,IR-CUT coil has an internal resistance of 20 ohms, the power-on time is less than 200ma, and the voltage is 3.5V-6V
Noise reduction	Support 2D/3D
Wide dynamic	Support
Auto iris	N/A
Audio compression	G.711 standard compression,support two-way Bidirectional Talk,support for audio and video synchronization
Audio interface	1ch input,level:2Vp-p,impedance:1kΩ,support sound pick-up input;1ch output,impedance:16Ω,30mw,support microphone;
Network interface	1 RJ45 Ethernet interface, 10/100M adaptive; Support for network protocols such as RTSP/FTP/PPPOE / DHCP/DDNS / NTP/UPnP
Extension interface	N/A
Singal interface	one IR-CUT interface
PTZ	N/A
Motor interface	N/A
Alarm I/O	1/1
WIFI interface	Supports 600 meters wireless connections
Reset interface	N/A
SD Card	N/A
Reliability	Comprehensive lightning protection, 7 * 24 hours 65 ℃ high temperature stable and reliable testing
Intelligence analysis	Supporting human detection and customizing other intelligent functions
Other function	Support IO alarm,front-end storage/playback/download, and center reminder and image linkage,support JPEG capture; perfect SDK;
ONVIF	Unsupport
Mobile monitoring	Unsupport
Power	DC5V-12V
Dimension	38mm*38mm+38mm*38mm
Other	The drive voltage of the light board is at 3.3V



Socket	Specific No	Interface Description	Function	
J9	1	LED0	LED/PHY_AD0	Connect the tail line of the camera module
	2	LED1	LED/PHY_AD1	
	3	ETHTX+	Ethernet signal+	
	4	ETHTX-	Ethernet signal-	
	5	ETHRX+	Ethernet signal+	
	6	ETHRX-	Ethernet signal-	
	7	GND	GND	
	8	12V	12V DC input	
J24	1	AC_OUTL	AC_OUT	Audio&Alarm
	2	AC_INL/MICP	AC_IN	
	3	GND	GND	
	4	ALARM_IN1	ALARM_GPIO	
	5	ALARM_OUT	ALARM_GPIO ( Reserve )	
J1	1	+5V WIFI	+5Voutput	WIFI/4G module
	2	USB_DN	USB data-	
	3	USB_DP	USB data+	
	4	GND	GND	
J5	1	IR_CUTA	IR-CUT A OUT	IR_CUT
	2	IR_CUTB	IR-CUT B OUT	
J6	1	IR	Infrared input	Connect the

2	GND	GND	camera lamp board
3	PWM	PWM-OUT	



Socket	Specific No	Interface Description	Function	
ANT2		RF_TR	IPEX connector	Connect IPEX to SMA feeder
J4	1	UART_TX	UART_TX	serial port
	2	UART_RX	UART_RX	
	3	GND	GND	
	4	NC	NC	
	5	+3.3V	+3.3V out	
J2	1	+5V	+5V in	WIFI 2.0mm
	2	USB_DM	USB_DM	
	3	USB_DP	USB_DP	
	4	GND	GND	
	5	USB_CTRL	WIFI power supply IO	
J3	1	+5V	+5V in	WIFI 1.25mm 5 PIN
	2	USB_DM	USB_DM	
	3	USB_DP	USB_DP	

	4	GND	GND	
	5	USB_CTRL	WIFI power supply IO	
J5	1	NC	NC	WIFI FPC
	2	NC	NC	
	2	NC	NC	
	3	NC	NC	
	4	NC	NC	
	5	NC	NC	
	6	NC	NC	
	7	NC	NC	
	8	GND	GND	
	9	NC	NC	
	10	NC	NC	
	11	GND	GND	
	12	NC	NC	
	13	USB_DM	USB_DM	
	14	USB_DP	USB_DP	
15	+5V	+5V in		
16	USB_CTRL	WIFI power supply IO		