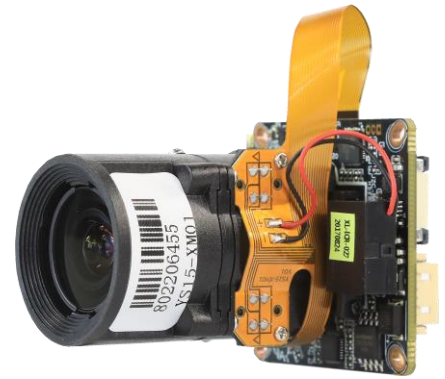


IPG-80HE20AF

2.0M H.265 Autofocal IP Module

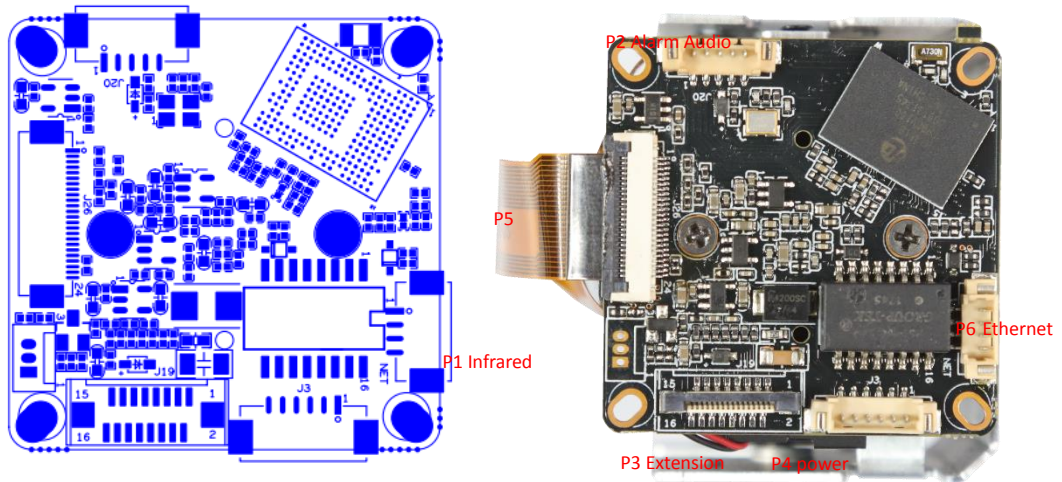
Features:

- 2.0M HD resolution, Autofocal, clear and fine images;
- Support 2D/3D noise reduction, digital wide dynamic;
- Advanced H.265+/H.265X video compression, Super low rate, high definition quality of image;
- Professional anti-lightning, conform to GB/T17626.5 and IEC61000-4-5.
- Support ONVIF ,access third party;
- Support various mobile monitoring(iPhone,Android);
- Provide web、CMS、center platform management software MYEYE, provide SDK development
- Support cloud technology, easy to achieve network penetration, fro in-line and alarm information pushed



Parameters:

Model	IPG-80HE20AF
System structure	Embedded RTOS, dual-core 32bit DSP (Hi3516EV100), pure hard compression ,watch dog
Sensor	2.0M 1/2.9" CMOS sensor ,color 0.1Lux@F1.2, black/white 0.01Lux@F1.2
Video compression	H.265+/H.265X support dual stream, AVI; 0.1M~8Mbps variable; 1~30f/s variable
Image output	Main stream: 1920*1080@20fps, 1280*720@25fps; sub-stream: 704*576@25fps;
Shutter	1/50(1/60)s to 1/10,000s
Lens	Standard 2.8mm—12mm auto-zoom
Day and night	Support IR-CUT, IR-CUT coil has an internal resistance of 20 ohms, the power-on time is less than 200ma, and the voltage is 3.5V-6V
Noise reduction	Support 2D/3D
Wide dynamic	Support
Auto iris	N/A
Audio compression	G.711, support bidirectional talk, audio&video synchronization
Audio interface	1ch input, level: 2Vp-p, impedance: 1kΩ, support sound pick-up input; 1ch output, impedance: 16Ω, 30mw, support microphone
Network interface	1*RJ45 10/100M adaptive Ethernet port; support RTSP/FTP/PPPOE/DHCP/DDNS/NTP/UPnP etc
Extension interface	support SD, alarm I/O, RTC battery, USB
Singal interface	One photo resistance interface, one IR-CUT interface ,support photo resistance signal and IR-CUT links to IR
PTZ	1*RS485
Motor interface	Support driven AF lens
Alarm I/O	1/I(support alarm input and video link to background)
WIFI interface	N/A
Reset interface	N/A
SD Card	N/A
Reliability	Comprehensive lightning protection, 7 * 24 hours 65 °C high temperature stable and reliable testing
Intelligence analysis	N/A
Other function	Support WEB, OSD, live video transmission, motion detect and IO alarm, front-end storage/playback/download, and center reminder and image linkage, support JPEG capture: united remote client monitoring software、MYEYE; perfect SDK;
ONVIF	Support
Mobile monitoring	Support multiple mobile monitoring (iOS, Android)
Power	DC12V/2A input, power consumption: ≤3W,
Dimension	38mm*38mm
Other	Support POE power supply (optional) , The drive voltage of the light board is at 3.3V



sign	Socket	Specific No	Interface Description	
P1	J30	1	Infrared input	
		2	GND	
		3	GPIO0_0	
P2	J20	1	AC_OUT	
		2	AC_IN	
		3	GND	
		4	ALARM_GPIO	
		5	GND	
P3	J19	1	SD_CLK	
		2	SD_CMD	
		3	SD_DATA0	
		4	SD_DATA1	
		5	SD_DATA2	
		6	SD_DATA3	
		7	ALARM2_GPIO82	
		8	GND	
		9	KEY_SET	
		10	BAT	
		11	GND	
		12	ALARM_OUT	
		13	USB_DM	
		14	USB_DP	
		15	+5V	
		16	USB_CONTROL	
P4	J1	1	12V	
		2	GND	
		3	RXD1	UART1

		4	TXD1	
		5	RXD0	
		6	TXD0	UART0
P6		1	ETHRX-	
		2	ETHRX+	
		3	ETHTX-	
		4	ETHTX+	