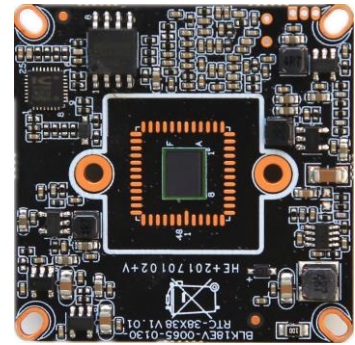


IPG-53HV13PT-A

1.3M Network Camera Module

Features:

- 1.3M HD resolution, clear and fine images;
- Support 2D/3D noise reduction, digital wide dynamic;
- Advanced H.264 video compression, Super low rate, high definition quality of image;
- Professional anti-lightning, conform to GB/T17626.5 and IEC61000-4-5.
- Support ONVIF ,access third party;
- Support various mobile monitoring (iPhone, Android);
- Provide web、CMS、center platform management software MYEYE, provide SDK development
- Support cloud technology, easy to achieve network penetration, fro in-line and alarm information pushed



Parameters:

| | |
|-----------------------|---------------------------------------------------------------------------------------------------------------------------------------------------------------------------------------------------------------------------------------|
| Model | IPG-53HV13PT-A |
| System structure | Embedded RTOS, dual-core 32bit DSP (Hi 3518EV200), pure hard compression , watch dog |
| Sensor | 1.3M 1/3" H65 Low illumination CMOS sensor ,color 0.01Lux@F1.2, black/white 0.001Lux@F1.2 |
| Video compression | H.264, support dual stream, AVI; 0.1M~6Mbps variable; 1~30f/s variable |
| Image output | Main stream: 1280*960@25fps, 1280*720@25fps; sub-stream: 704*576@25fps; |
| Shutter | 1/50(1/60)s to 1/10,000s |
| Lens | No |
| Day and night | Support IR-CUT |
| Noise reduction | Support 2D/3D |
| Wide dynamic | Support |
| Auto iris | N/A |
| Audio compression | G.711, support bidirectional talk, audio&video synchronization |
| Audio interface | 1ch input, level: 2Vp-p, impedance: 1kΩ, support sound pick-up input; 1ch output, impedance: 16Ω, 30mw, support microphone; |
| Network interface | 1*RJ45 10/100M adaptive Ethernet port; support RTSP/FTP/PPPOE/DHCP/DDNS/NTP/UPnP etc |
| Extension interface | 1*USB, support WIFI/3G, support SD; |
| Singal interface | One photo resistance interface, one IR-CUT interface ,support photo resistance signal and IR-CUT links to IR |
| PTZ | N/A |
| Motor interface | N/A |
| Alarm I/O | 1/I (support alarm input and video link to background) |
| WIFI interface | N/A |
| Reset interface | N/A |
| SD Card | N/A |
| Reliability | Comprehensive lightning protection, 7 * 24 hours 65 °C high temperature stable and reliable testing |
| Intelligence analysis | No |
| Other function | Support WEB, OSD, live video transmission, motion detect and IO alarm, front-end storage/playback/download, and center reminder and image linkage, support JPEG capture; united remote client monitoring sofaware、MYEYE; perfect SDK; |
| ONVIF | Support |
| Mobile monitoring | Support multiple mobile monitoring (iOS, Android) |
| Power | DC12V/2A input, power consumption: ≤3W, |
| Dimension | 38mm*38mm |
| Other | Support POE power supply (optional) |