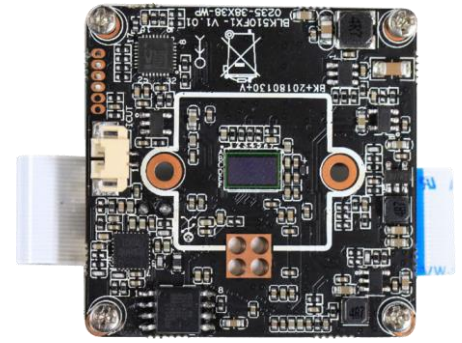


IPG-50XF20PS-WPN

2.0M dual-line network camera module

Features:

- 2.0M resolution,clear and fine images;
- Support for wired and wireless connections
- Support 2D/3D noise reduction,digital wide dynamic;
- Advanced H.265X/H.264 video compression,Super low rate,high definition quality of image;
- Professional anti-lightning,conform to GB/T17626.5 and IEC61000-4-5。
- Support mobile phone monitoring(iOS, Android);
- Provide web、CMS、 provide SDK development
- Support cloud technology,easy to achieve network penetration,fro in-line and alarm information pushed



Parameters:

| | |
|-----------------------|---|
| Model | IPG-50XF20PS-WPN |
| System structure | Embedded RTOS, dual-core 32-bit DSP (XM510),pure hard compression ,watch dog |
| Sensor | 2.0M 1/2.9" SC2235P CMOS sensor,color 0.1Lux@F1.2,black/white 0.01Lux@F1.2 |
| Video compression | H.265X/H.264,support dual stream,AVI;0.1M~8Mbps variable |
| Image output | Main stream: 1280*1080@12fps; sub-stream: 640*360@12fps |
| Shutter | 1/50(1/60)s to 1/10,000s |
| Lens | N/A |
| Day and night | Support IR-CUT |
| Noise reduction | Support 2D/3D |
| Wide dynamic | Support |
| Auto iris | N/A |
| Audio compression | G.711 standard compression,support two-way Bidirectional Talk,support for audio and video synchronization |
| Audio interface | 1ch input,level:2Vp-p,impedance:1kΩ,support sound pick-up input;1ch output,impedance:16Ω,30mw,support microphone; |
| Network interface | N/A |
| Extension interface | N/A |
| Singal interface | one IR-CUT interface |
| PTZ | N/A |
| Motor interface | N/A |
| Alarm I/O | N/A |
| WIFI interface | Supports wired and wireless connections |
| Reset interface | Support |
| SD Card | Support Maximum 128G |
| Reliability | Comprehensive lightning protection, 7 * 24 hours 65 °C high temperature stable and reliable testing |
| Intelligence analysis | NO |
| Other function | Support WEB,OSD,live video transmission,motion detect and IO alarm,front-end storage/playback/download, and center reminder and image linkage,support JPEG capture; united remote client monitoring sofaware、MYEYE;perfect SDK; |
| ONVIF | NO |
| Mobile monitoring | Support multiple mobile monitoring (iOS, Android) |
| Power | DC5V |
| Dimension | 38mm*38mm+38mm*38mm |
| Other | Does not accept any custom. |