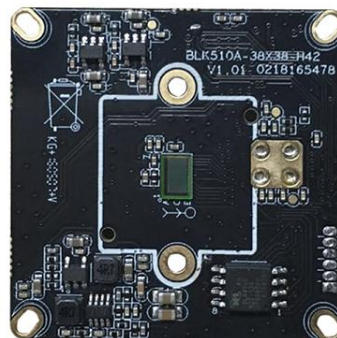


IPG-50X10PE-S

Features:

- 1.0M 1/4" H42 CMOS sensor
- Support 3D DNR, DWDR;
- Support ONVIF;Support Third-party NVR;
- Support for mobile video surveillance(iOS,android);
- Support Web, CMS, platform management software MYEYE,Provide SDK ;
- Support cloud service, network penetration, alarm information pushed to phone ,etc.



Parameters:

Model	IPG-50X10PE-S
System structure	Embedded RTOS,dual-core 32bit DSP(XM510),pure hard compression ,watch dog
Sensor	1.0M 1/4" H42 CMOS sensor ,color 0.1Lux@F1.2,black/white 0.01Lux@F1.2
Video compression	H.264,support dual stream,AVI;0.1M~6Mbps variable;1~30f/s variable
Image output	Main stream: 1280*720, 704*576;sub-stream: 704*576;
Noise reduction	Support 2D/3D
Wide dynamic	Support digital
Network interface	1*RJ45 10/100M adaptive Ethernet port;support RTSP/FTP/PPPOE/DHCP/DDNS/NTP/UPnP etc
Singal interface	One photo resistance interface,one IR-CUT interface ,support photo resistance signal and IR-CUT links to IR
Auto iris	No
SD Card	Unsupport
Reliability	Comprehensive lightning protection, in line with national and international standards; 7 * 24 hours 65 °C high temperature stable and reliable testing (including mounted machine testing)
Other function	Support OSD,live video transmission,motion detect and IO alarm,front-end storage/playback/download, and center reminder and image linkage,support JPEG capture; united remote client monitoring sofaware . MYEYE;perfect SDK;
ONVIF	Support
Mobile monitoring	Support multiple mobile monitoring (iOS, Android)
Power	DC12V/2A input, power consumption: ≤3W
Dimension	38mm*38mm
Explain	Support POE power supply (optional), not support any custom