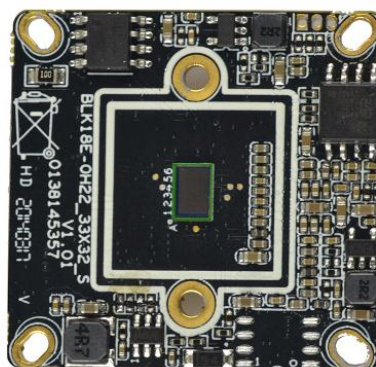


IPG-50H10Q-S

Features:

- 1/4" CMOS sensor ;
- Main stream:1280\*720; 704\*576;sub-stream: 704\*576;352\*288;
- Support 3D DNR, DWDR; Support QQ connect
- Support for mobile video surveillance(iOS,android);
- Support Web, CMS, platform management software MYEYE,Provide SDK ;
- Support cloud service, network penetration, alarm information pushed to phone ,etc.



Parameters:

Model	IPG-50H10Q-S
System structure	Embedded RTOS,dual-core 32bit DSP( Hi3518E),pure hard compression ,watch dog
Sensor	1/4" CMOS sensor ; color 0.1Lux@F1.2,black/white 0.01Lux@F1.2
Video compression	H.264,support dual stream,AVI;0.1M~4Mbps variable;1~25f/s variable
Image output	Main stream:1280*720; 704*576sub-stream: 704*576;352*288;
Noise reduction	Support 2D/3D
Wide dynamic	Support digital
Network	1 RJ45, 10/100M, support RTSP/FTP/PPPOE/DHCP/DDNS/NTP/UPnP
Singal interface	One photo resistance interface,one IR-CUT interface ,support photo resistance signal and IR-CUT links to IR
Auto iris	No
SD card	No
Reliability	Comprehensive lightning protection, in line with national and international standards; 7 * 24 hours 65 °C high temperature stable and reliable testing (including mounted machine testing)
Other function	Support OSD,live video transmission,motion detect and IO alarm,front-end storage/playback/download, and center reminder and image linkage,support JPEG capture; united remote client monitoring sofaware . MYEYE;perfect SDK;
ONVIF	Unsupport
Mobile monitoring	Support multiple mobile monitoring (iOS, Android)
Other	DC12V/2A input, power consumption:≤3W,dimension 32mm*32mm
Explain	Support POE power supply (optional), not support any custom