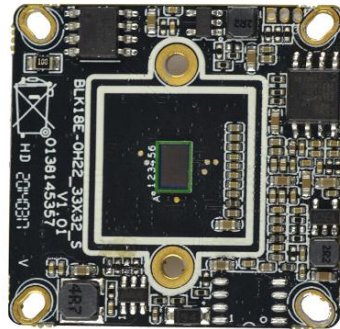


1.0M CMOS Network Camera Module



1. Features:

- Ultimate 32: best structure adaptability, suitable for all kinds of precision shells;
- Comprehensive lightning protection design: in line with national standards GB/T17626.5, the international standard IEC61000-4-5;
- Support Poe expansion: in line with international standards IEEE802.3at/af;
- XM Cloud technology • one step to internet unique P2P penetration technology, connectivity rate of nearly 100%;
- through harsh high temperature test: 7 * 24 hours 65 °C high temperature stable and reliable testing (including machine)

2. Model

IPG-50H10PE-SL

3. Parameters

Specifications	IPG-50H10PE-SL
System Structure	Embedded RTOS design, dual-core 32-bit DSP (Hi3518E), pure hardware compression, watchdog;
Sensor	1/4 " H42 CMOS sensor;
Illumination	Color 0.1Lux @ F1.2, black and white 0.01 Lux@F1.2;
Video compression	H.264, support dual-stream, AVI format; support stream 0.1M ~ 6Mbps adjustable; support frame rate from 1 to 25 frames / sec adjustable;
Image output	main stream:1280*720, 704*576;sub-stream:704*576, 352*288;
Network interface	1 RJ45, 10/100M Ethernet adaptive interface; support RTSP / FTP / PPPOE / DHCP / DDNS / NTP / UPnP network protocols;
Other interface	1 external single, 1 IR-CUT, support photo resistor input signal and image, IR-CUT, infrared light linkage;
features	Support WEB configure, support for OSD, support real-time video transmission, support mobile surveillance, support for mobile detection alarm center after the screen pop-up reminders and linkage; supports JPEG capture; support unified client remote monitoring software, MYEYE platform system applications; provide perfect the SDK development package;
ONVIF	support

Mobile monitoring	Support multiple mobile monitoring (iOS, Android)
Power	DC12V
dimension	32mm*32mm
Reliability	Comprehensive lightning protection, in line with national and international standards; 7 * 24 hours 65 °C high temperature stable and reliable testing (including mounted machine testing)
directions	Support POE power supply (optional),-S is neutral generic version, does not accept any custom