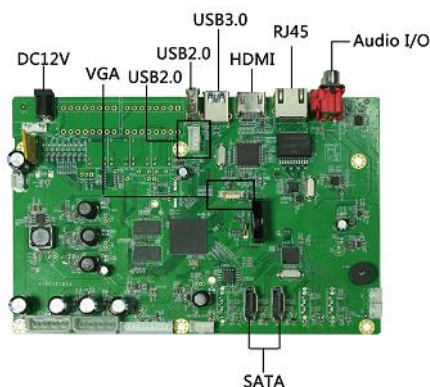


NBD8016H2-Q-V2
Features:

- support VGA HDMI 4K output;
- Support web, CMS, center platform management software MYEYE, provide SDK development;
- Support multiple cloud technology, network penetration, alarm information pushed to your phone and other functions;
- Support multiple network services (support DHCP, FTP, DNS, DDNS, NTP, UPNP, EMAIL, 3G,WIFI,IP searches etc.);
- Visit remotely,built-in ARSP,achieve start up by one step.


Technical Parameters:
Model: NBD8016H2-Q-V2

	Model	NBD8016H2-Q-V2
System	Main processor	Hi3798C
	Operating System	Embedded Linux
	System Resources	Simultaneous multi-channel real-time recording, playback, network operation, USB backup
Operator Interface	Operator interface	16-bit true color graphic menu operation interface, support mouse operation
	Preview	1/4/8/16
Video	Video input (IP)	8*5M/16*4M/16*3M
	Video standards	PAL(625TVL,50f/s); NTSC(525TVL,60f/s)
	Video compression	H.265/H.264
	Display quality	Max:4K
	Playback quality	5M/4M/3M
	Decode	4*5M/4*4M/8*3M
Audio	Motion detection	Depend on camera
	Audio compression	G.711A
Record & playback	intercom	Support
	Recording mode	Manual>Alarm>Video Detection>Continuous
	Local Playback	4*5M/4*4M/8*3M
Storage &	Search mode	search by Time/calendar/event/channel
	Record Storage	HDD 、 network
Interface	Backup mode	Network backup, USB hard disk, USB burner, SATA burner
	Video output	1ch HDMI ,1ch VGA output
	Audio I/O	1/1
	Alarm I/O	No (Can be extended to 16/4)
	Network interface	1*RJ45 10M/100M /1000MAdaptive Ethernet port
	USB interface	2*USB2.0 port,1*USB3.0 port
	Hard disk	2*SATA(Up to 8TB for each disk)
other	PTZ control	Control PTZ device by network
	ONVIF	Support
	Power supply	12V/4A
	Power Consumption	<10W(Without HDD)
	Work environment	Temperature:0°C-+ 55°C , Humidity:10%—90%RH , Atm:86kpa—106kp
	dimension	192.5mm(H)*127mm(W)
	weight	Around159g