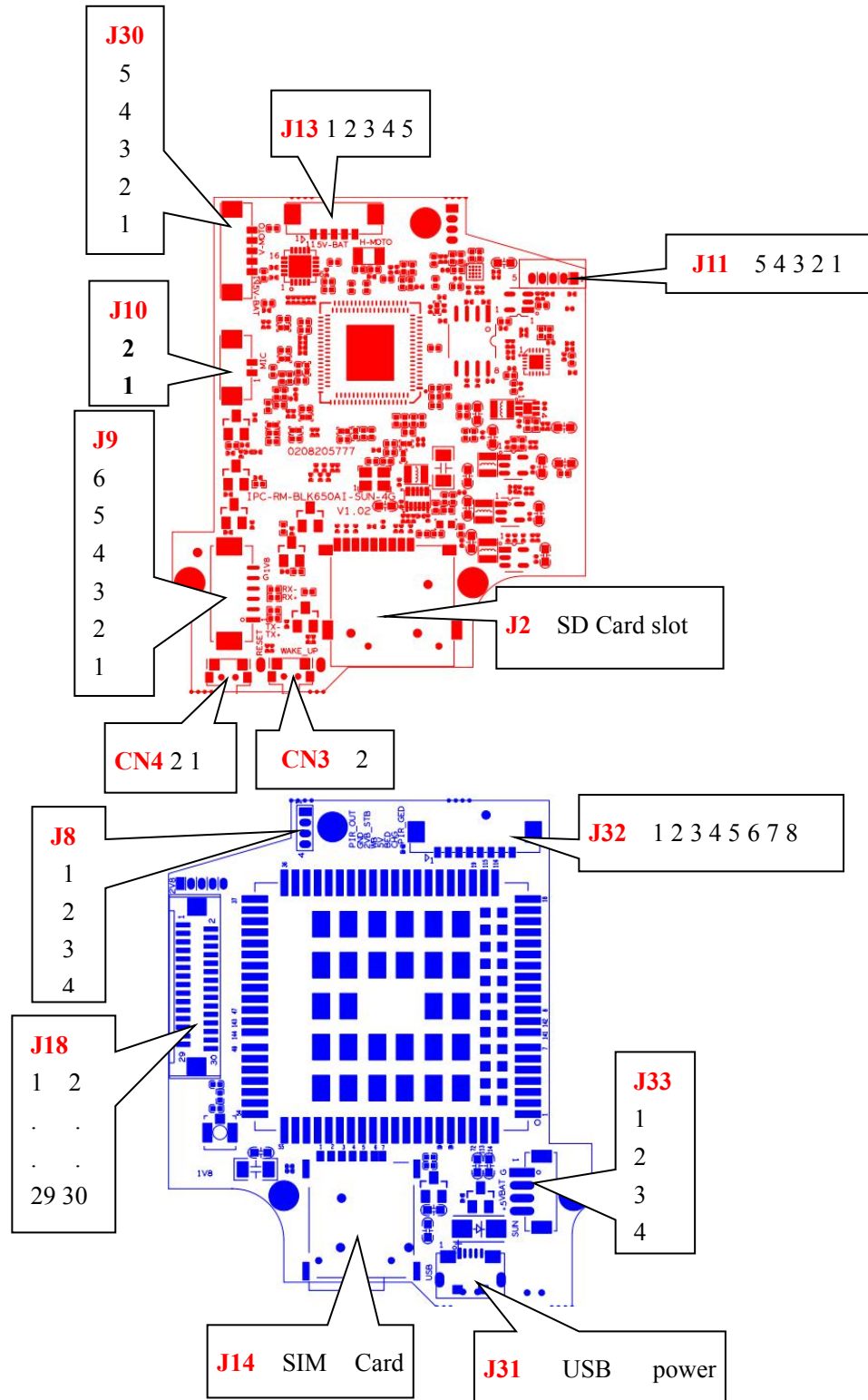


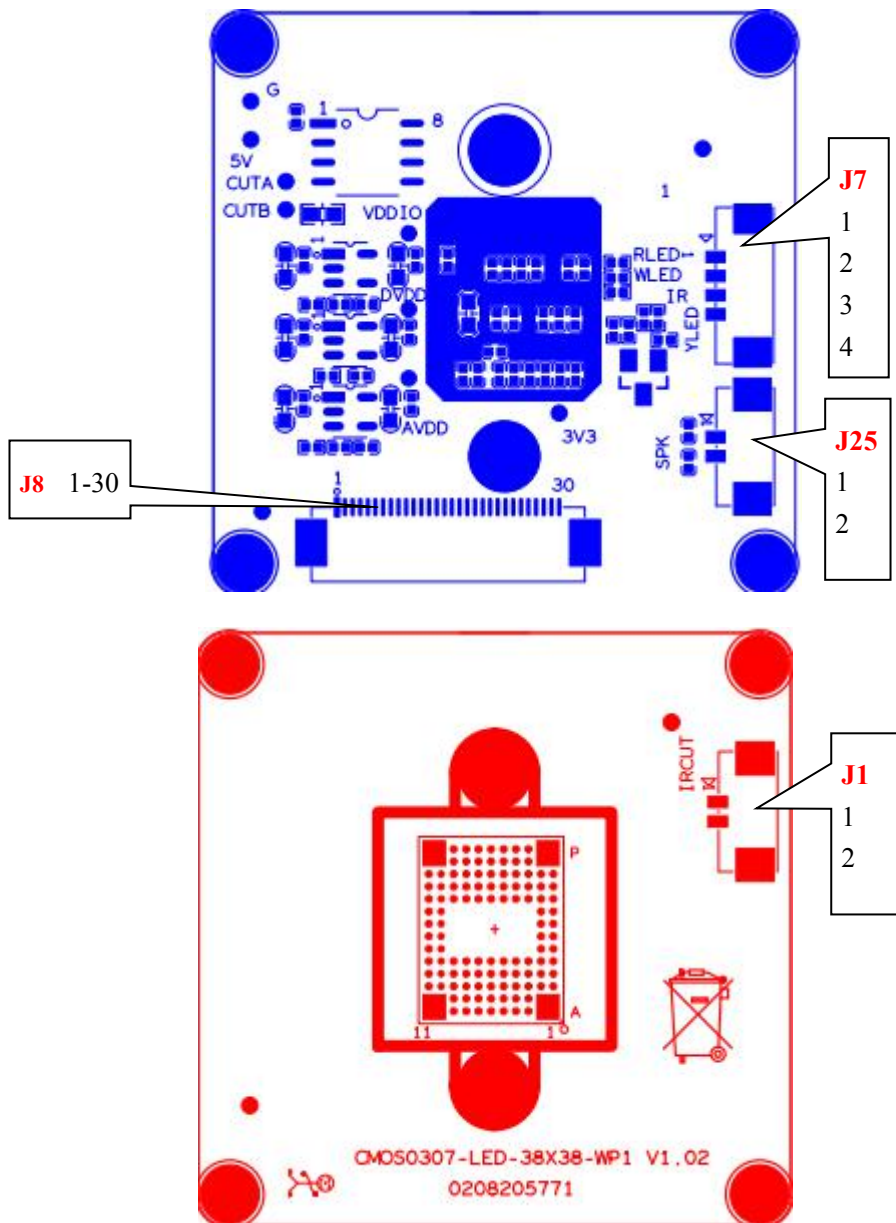
IPC-RM-BLK650AI-SUN-4G-V1_02 Interface description



Socket	Specific No	Interface Description	Function
J10	1	MIC_G	MIC interface
	2	MIC_IN	
J30	1	5V	Positive pole of 5V power supply
	2	OUT1	Vertical motor drive interface
	3	OUT2	
	4	OUT3	
	5	OUT4	
J13	1	5V	Positive pole of 5V power supply
	2	OUT1	Horizontal motor drive interface
	3	OUT2	
	4	OUT3	
	5	OUT4	
J1	1	ETHTX+	ETH interface
	2	ETHTX-	
	3	ETHRX+	
	4	ETHRX-	
	5	GND	GND
	6	1V8	1.8V
J11	1	2V8	MCU off line burning interface
	2	SWDIO	
	3	SWDCLK	
	4	GND	
	5	NRST	
J2	1	SD	TF Card slot
K1	1	WAKE_UP	Wake up button
K2	1	RESET	Reset button
J15	1	SENO_MD1N	Master control docking sensor board data output bit
	2	SENO_MD1P	
	3	SENO_MD2N	
	4	SENO_MD2P	
	5	SENO_MD3N	
	6	SENO_MD3P	
	7	CLKP	
	8	CLKN	
	9	SENO_MDOP	

	10	SENO_MDON	
	11	GND	GND
	12	CDS	Photosensitive signal
	13	SENSOR_CLK	Sensor clock
	14	GND	GND
	15	I2C_SDA	I2C control signal
	16	I2C_SCL	
	17	IRCUT_A	IRCUT control signal
	18	IRCUT_B	IRCUT control signal
	19	SENSOR_VS	Sensor column
	20	SENSOR_HS	Sensor line
	21	Sensor_pclk	Sensor_pclk
	22	GND	GND
	23	SPKN	Loudspeaker interface
	24	SPKP	
	25	MCU_WLED	MCU control infrared signal
	26	MCU_RLED	MCU control white light signal
	27	RED	indicator light
	28	GND	GND
	29	3V3	3.3V supply pin
	30	5V	5V supply pin
J31	1	USB	USB debugging power supply
J33	1	GND	GND
	2	VBAT	Battery powered
	3	+5V	5V powered
	4	SOL	Solar power supply detection
J8	1	GND	GND
	2	TX	TX
	3	RX	RX
	4	BOOTSEL	BOOTSEL
J32	1	PIR	Alarm PIR
	2	GND	GND
	3	2V8	Indicator power supply
	4	WB	Microwave alarm
	5	GND	GND
	6	BED_GPIO88	Power on indicator signal
	7	5V	Lamp panel power supply
	8	5V	
J14	1	SIM	SIM Card slot

CMOS0307-LED-38X38-WP1-V1_02 Interface description



Socket	Specific No	Interface Description	Function
J7 (Butt light panel)	1	RLED	Infrared control
	2	WLED	White light control
	3	RED_CTRL	Photosensitive signal
	4	YLED	Networking indicator signal
J25	1	SPK	Loudspeaker interface
	2	SPK	
J1	1	IRCUT_A	IRCUT interface
	2	IRCUT_B	
J15	1	SENO_MD1N	Master control docking sensor board data output bit
	2	SENO_MD1P	
	3	SENO_MD2N	
	4	SENO_MD2P	
	5	SENO_MD3N	
	6	SENO_MD3P	
	7	CLKP	
	8	CLKN	
	9	SENO_MDOP	
	10	SENO_MDON	
	11	GND	GND
	12	CDS	Photosensitive signal
	13	SENSOR_CLK	Sensor clock
	14	GND	GND
	15	I2C_SDA	I2C control signal
	16	I2C_SCL	
	17	IRCUT_A	IRCUT control signal
	18	IRCUT_B	IRCUT control signal
	19	SENSOR_VS	Sensor column
	20	SENSOR_HS	Sensor line
	21	Sensor_pclk	Sensor_pclk
	22	GND	GND
	23	SPKN	Loudspeaker interface
	24	SPKP	
	25	MCU_WLED	MCU control infrared signal
	26	MCU_RLED	MCU control white light signal
	27	RED	indicator light
	28	GND	GND
	29	3V3	3.3V supply pin
	30	5V	5V supply pin

