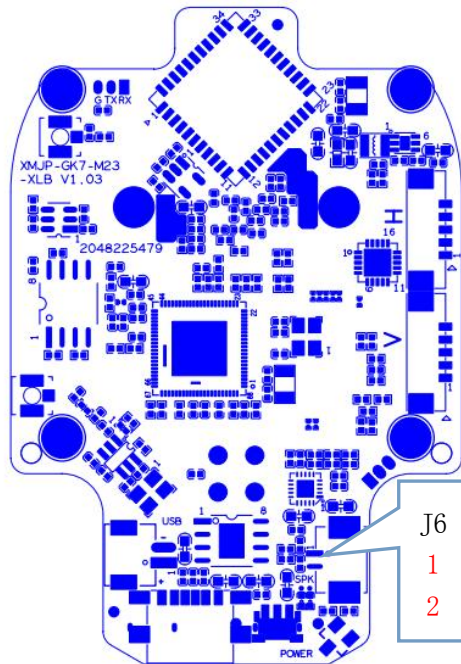
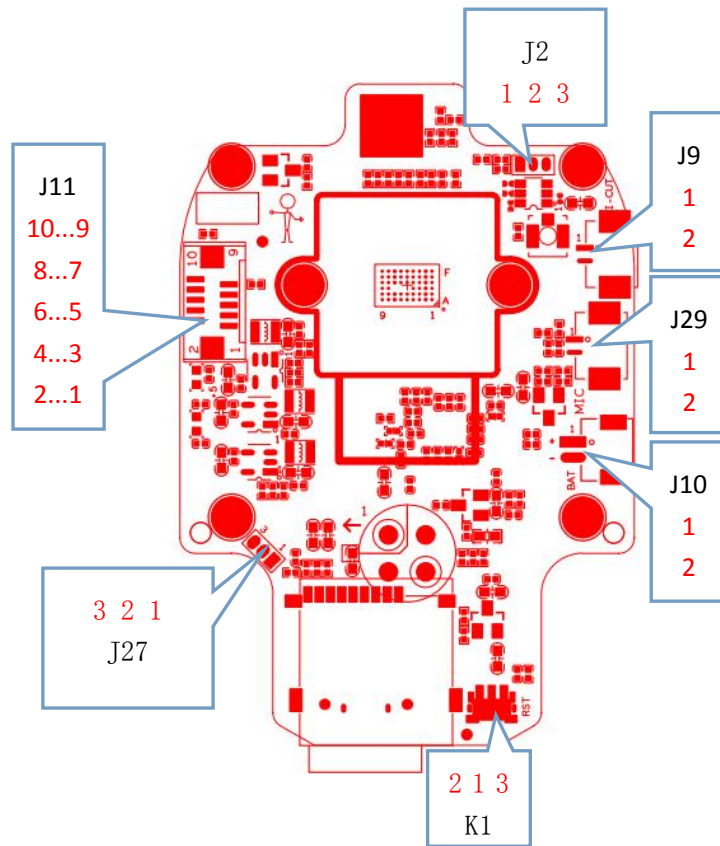


LPG-G4-GL Interface description



Socket	Specific No	Interface Description	Function
J11	1	+5V_BQ	+5V Power Supply
	2	+5V_BQ	+5V Power Supply
	3	3V3	3.3V
	4	GND	GND
	5	GND	GND
	6	GPIO50	White light signal
	7	RLED_EN	Infrared signal
	8	ADC_IN	Photosensitive signal
	9	MCU_LED1	Blue light distribution network indicator
	10	MCU_LED2	Red low battery indicator
J9	1	OUT1	IR CUT signal
	2	OUT2	IR CUT signal
J29	1	MIC_N	MIC signal
	2	MIC_P	MIC signal
J10	1	+5V_LI	+5V battery
	2	GND	GND
K1	1	SW_ON/OFF	SET KEY
	2	GND	GND
	3	GND	GND
	4	GND	GND
	5	GND	GND
	6	GND	GND
	7	GND	GND
J6	1	Horn signal	Horn signal
	2	Horn signal	Horn signal
J2	1	UART_RXD	Serial port receiving
	2	UART_TXD	Serial port sending
	3	GND	GND
J27	1	UART_RXD	Serial port receiving
	2	UART_TXD	Serial port sending
	3	GND	GND