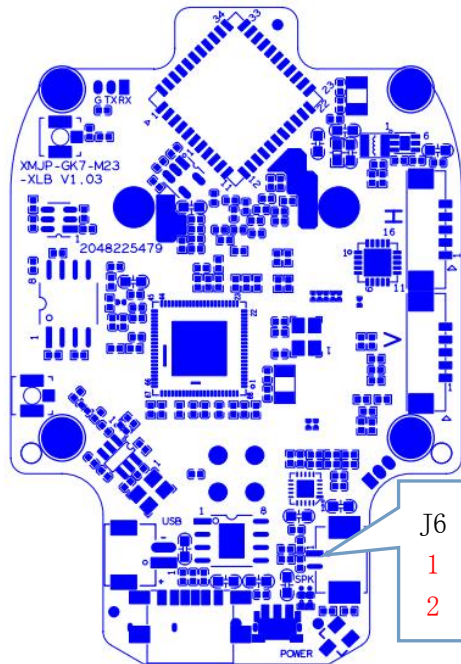
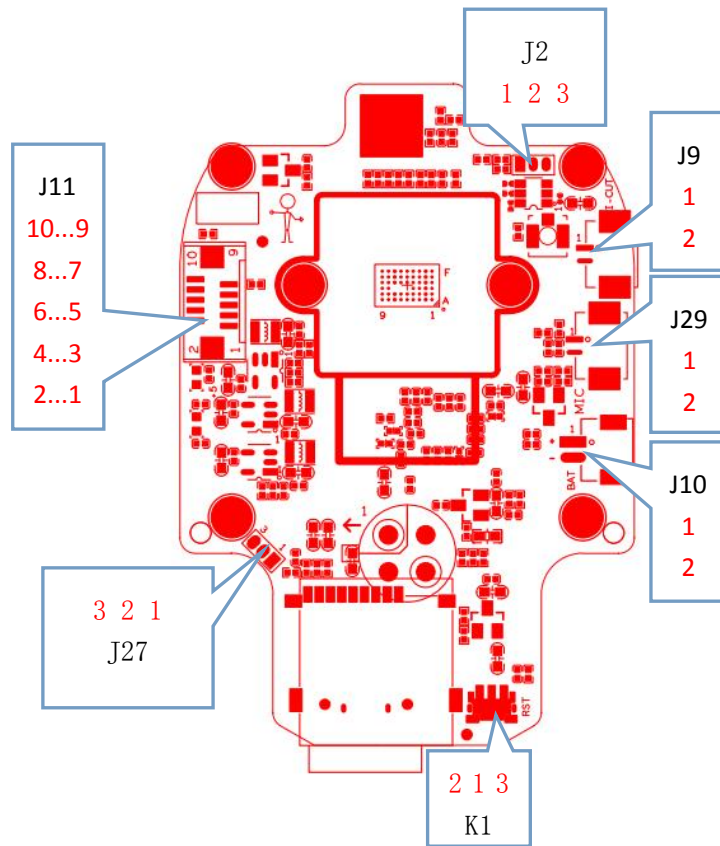


LPG-G4-GL-E40 Interface description



| Socket | Specific No | Interface Description | Function |
|--------|-------------|-----------------------|---|
| J11 | 1 | +5V_BQ | +5V Power Supply |
| | 2 | +5V_BQ | +5V Power Supply |
| | 3 | 3V3 | 3.3V |
| | 4 | GND | GND |
| | 5 | GND | GND |
| | 6 | GPIO50 | White light signal |
| | 7 | RLED_EN | Infrared signal |
| | 8 | ADC_IN | Photosensitive signal |
| | 9 | MCU_LED1 | Blue light distribution network indicator |
| | 10 | MCU_LED2 | Red low battery indicator |
| J9 | 1 | OUT1 | IRCUT signal |
| | 2 | OUT2 | IRCUT signal |
| J29 | 1 | MIC_N | MIC signal |
| | 2 | MIC_P | MIC signal |
| J10 | 1 | +5V_LI | +5V battery |
| | 2 | GND | GND |
| K1 | 1 | SW_ON/OFF | SET KEY |
| | 2 | GND | GND |
| | 3 | GND | GND |
| | 4 | GND | GND |
| | 5 | GND | GND |
| | 6 | GND | GND |
| | 7 | GND | GND |
| J6 | 1 | Horn signal | Horn signal |
| | 2 | Horn signal | Horn signal |
| J2 | 1 | UART_RXD | Serial port receiving |
| | 2 | UART_TXD | Serial port sending |
| | 3 | GND | GND |
| J27 | 1 | UART_RXD | Serial port receiving |
| | 2 | UART_TXD | Serial port sending |
| | 3 | GND | GND |