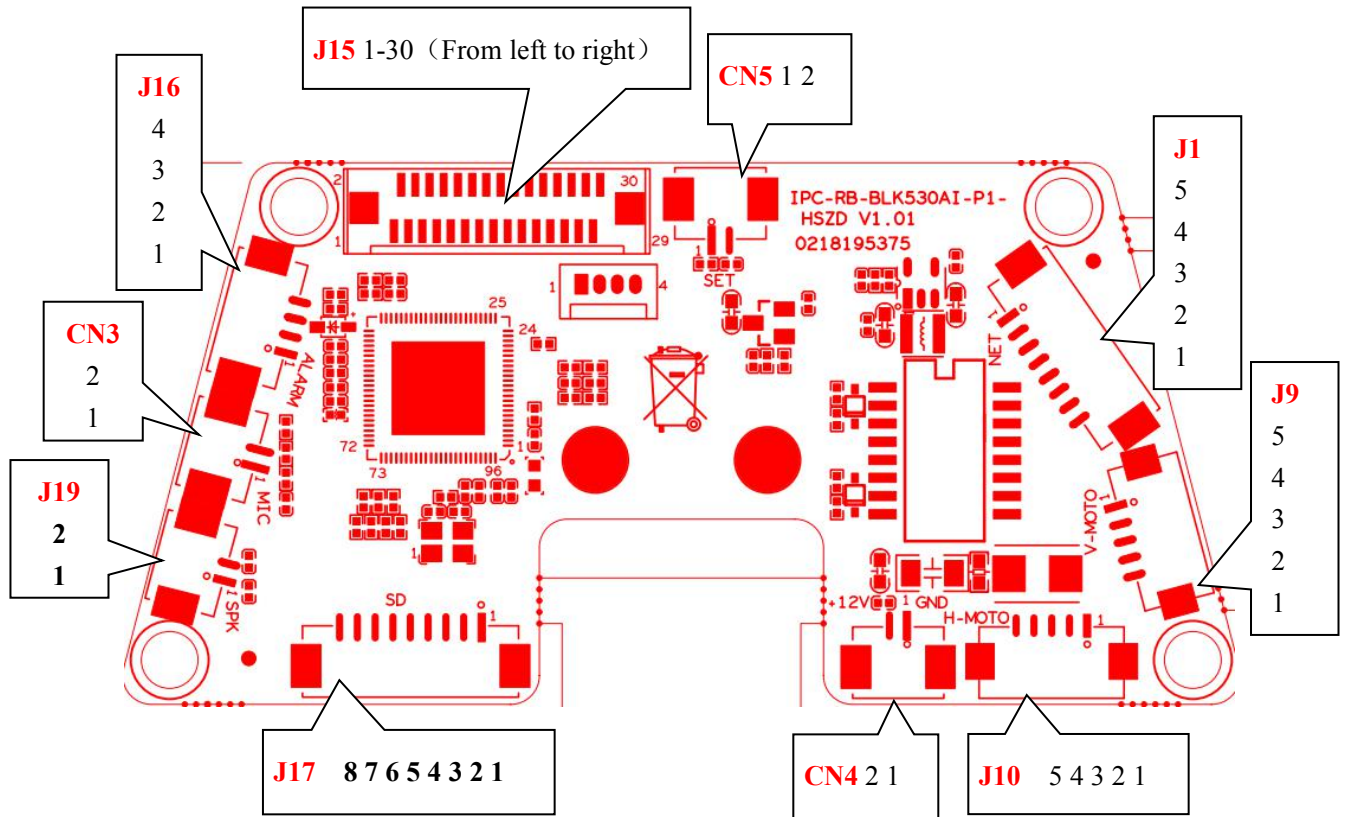


IPC-RB-BLK530AI-P1-HSZD-V1_01 Interface description

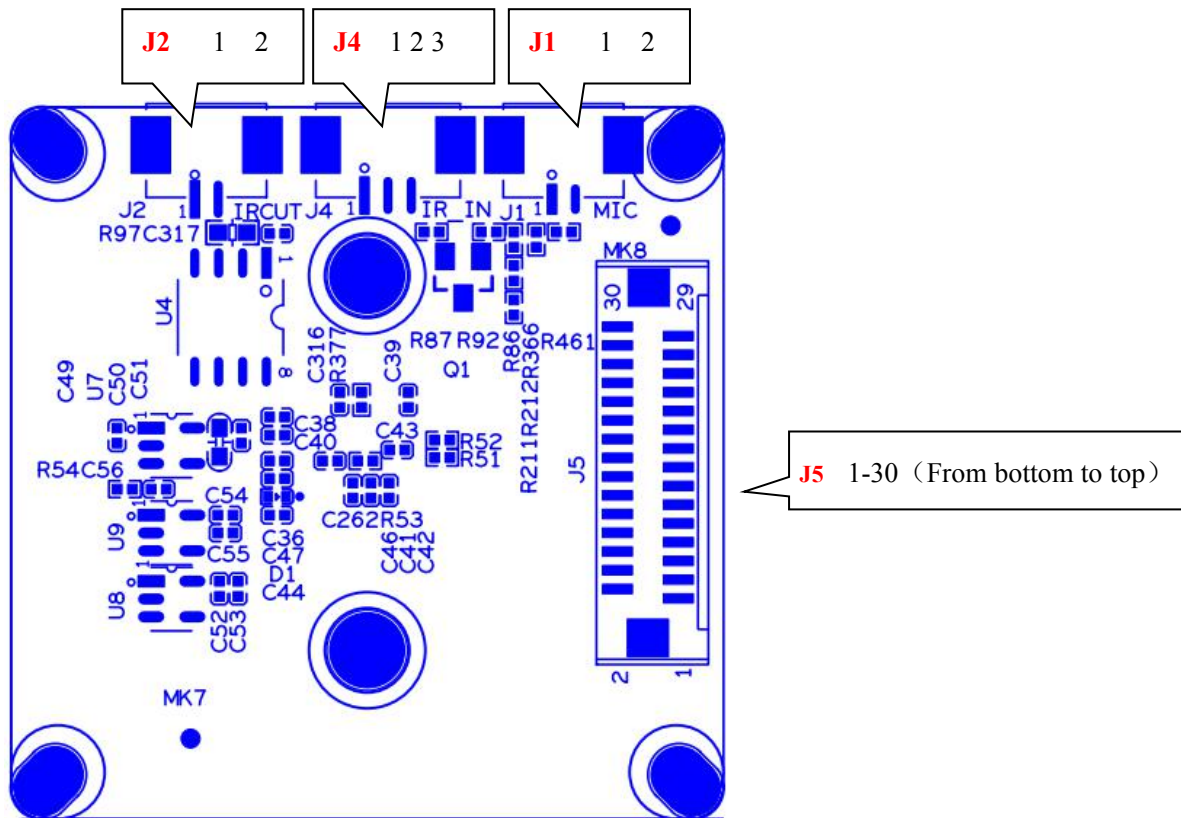


Socket	Specific No	Interface Description	Function
CN3	1	MIC_G	MIC Interface
	2	MIC_IN	
J19	1	SPKN	Loudspeaker Interface
	2	SPKP	
J9	1	5V	5V power
	2	OUT1	Motor drive interface (vertical motor)
	3	OUT2	
	4	OUT3	
	5	OUT4	
J10	1	5V	5V power
	2	OUT1	Motor drive interface (horizontal motor)
	3	OUT2	
	4	OUT3	
	5	OUT4	
	1	NC	NC
	2	LED1/PHY_AD1+	Network port indicator
	3	ETHTX+	

J1	4	ETHTX-	ETH Interface
	5	ETHRX+	
	6	ETHRX-	
	7	GND	GND
	8	12V	12V power
J15	1	SENO_MDON	Master control docking sensor board data output bit
	2	SENO_MDOP	
	3	SENO_MD1N	
	4	SENO_MD1P	
	5	SENO_MCN	
	6	SENO_MCP	
	7	GND	GND
	8		
	9		
	10		
	11		
	12	I2C control signal	
	13		I2C_SDA
	14	I2C_SCL	
	15	LED1_I039	GPI039LED control signal
	16	RED_CTRL	Photosensitive control signal
	17	IRCUT_A	IRCUT control signal
	18	IRCUT_B	IRCUT control signal
	19	MIC_G	MIC Interface
	20	MIC_IN	
	21	GND	GND
	22		
	23		
	24		
	25	5V	5V power supply pin
	26	5V	5V power supply pin
	27	5V	5V power supply pin
	28	3V3	3.3V power supply pin
	29	3V3	3.3V power supply pin
	30	SENSOR_CLK	SENSOR Clock
CN5	1	KEY_SET	Reset button
	2	GND	GND
CN4	1	GND	GND
	2	12V	12V power supply pin
J16	1	ALARMIN	Alarm input
	2	GND	GND
	3		
	4	ALAMOUT	Alarm output

J17	1	GND	GND
	2	3V3	3.3V power supply pin
	3	SD_DATA2	SD Interface
	4	SD_DATA3	
	5	SD_CMD	
	6	SD_CLK	
	7	SD_DATA0	
	8	SD_DATA1	
	9	SD_CDTCT	

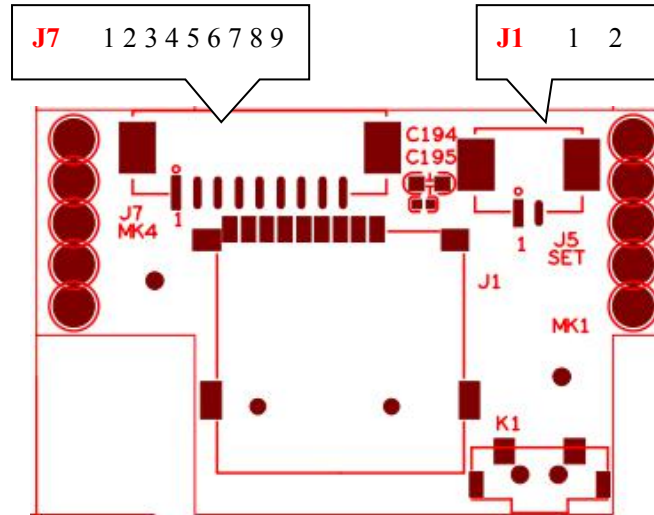
CMOS0235P-38X38-MINI-V1_01 Interface description



Socket	Specific No	Interface Description	Function
J4	1	LED1_I039	Led Signal control pin
	2	GND	GND
	3	RED_CTRL	Infrared control
J1	1	MIC_G	MIC Interface
	2	MIC_IN	
J2	1	IRCUT_A	IRCUT Interface

	2	IRCU_T_B	
J5	1	SENO_MDON	Master control docking sensor board data output bit
	2	SENO_MDOP	
	3	SENO_MD1N	
	4	SENO_MD1P	
	5	SENO_MCN	
	6	SENO_MCP	
	7	GND	GND
	8		
	9		
	10		
	11		
	12		
	13	I2C_SDA	I2C control signal
	14	I2C_SCL	
	15	LED1_IO39	GPIO39LED control signal
	16	RED_CTRL	Photosensitive control signal
	17	IRCU_T_A	IRCU_T control signal
	18	IRCU_T_B	IRCU_T control signal
	19	MIC_G	MIC Interface
	20	MIC_IN	
	21	GND	GND
	22		
	23		
	24		
	25	5V	5V power supply pin
	26	5V	5V power supply pin
	27	5V	5V power supply pin
	28	3V3	3.3V power supply pin
	29	3V3	3.3V power supply pin
	30	SENSOR_CLK	SENSOR Clock

IF-SD-ABQ-V1_01 Interface description



Socket	Specific No	Interface Description	Function
J17	9	GND	GND
	8	3V3	3.3V power supply pin
	7	SD_DATA2	SD Interface
	6	SD_DATA3	
	5	SD_CMD	
	4	SD_CLK	
	3	SD_DATA0	
	2	SD_DATA1	
1	SD_CDTCT		
J1	1	KEY_SET	Reset button
	2	GND	GND