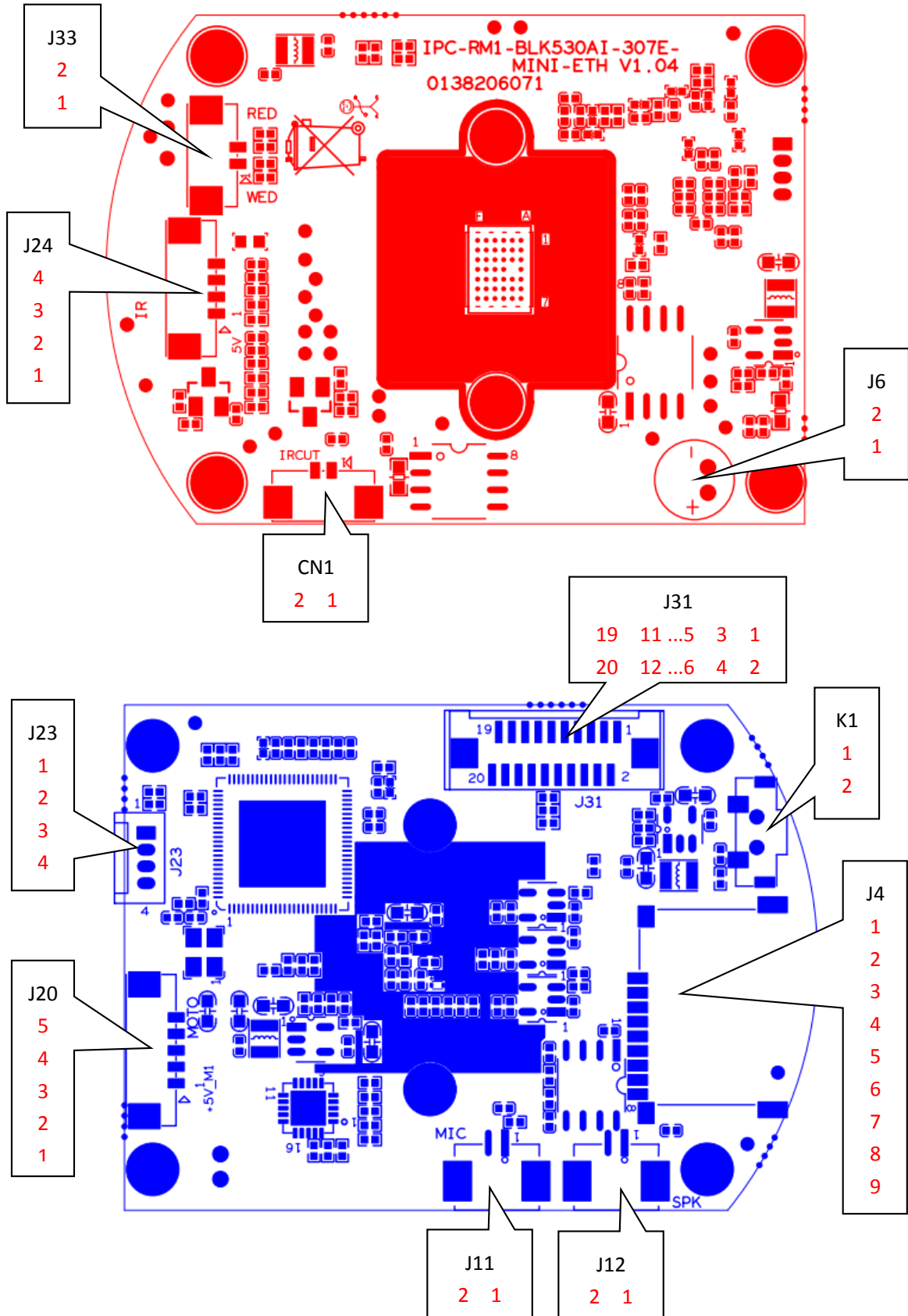


IPC-RM1-BLK530AI-307E-MINI-ETH-V1_04

Interface description

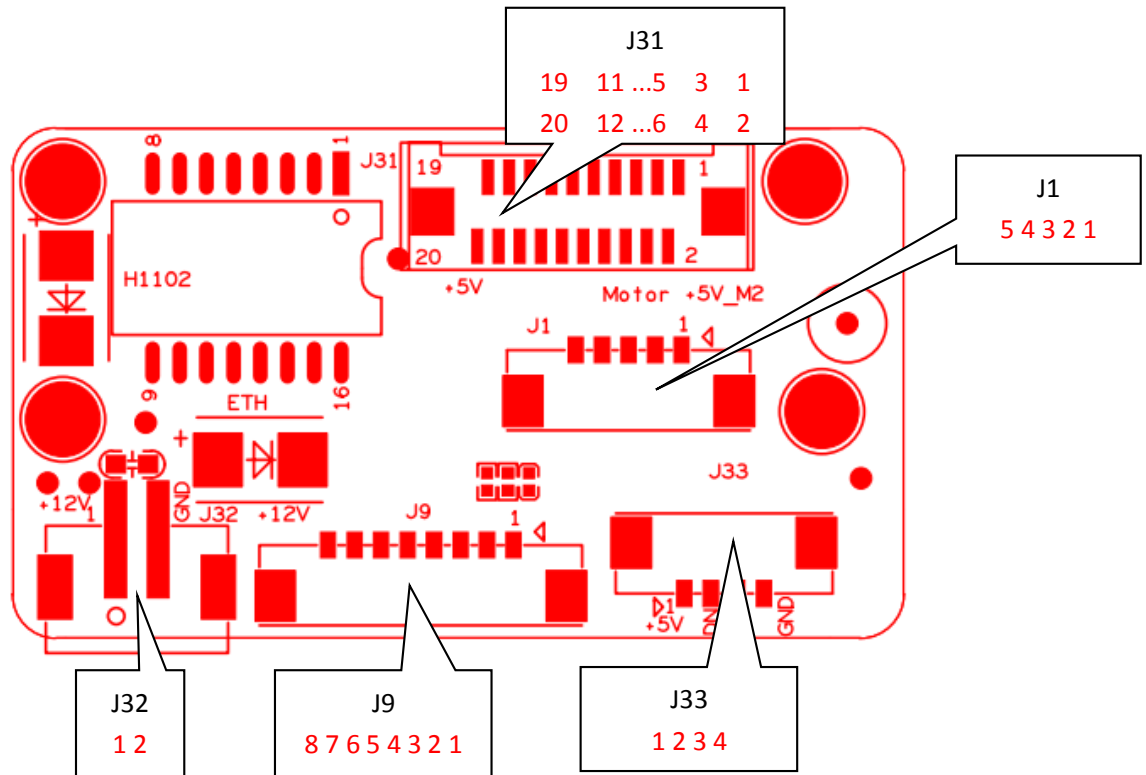


Socket	Specific No	Interface Description	Function
J33	1	WED_GPIO041	White light control port
	2	RED_GPIO039	Infrared light control port
J24	1	5V	5V
	2	GND	GND
	3	ADC1_IN	Photosensitive signal acquisition port
	4	GPIO091	indicator light
CN1	1	IRCUT_B	IRCUT signal 2
	2	IRCUT_A	IRCUT signal 1
J6(reserve)	1	MIC_IN	Microphone signal input
	2	MIC_G	GND
J23	1	GND	GND
	2	UART0_TXD	Serial port sending
	3	UART0_RXD	Serial port receiving
	4	X	Empty
J20	1	+5V_M1	Horn signal
	2	OUT1	Vertical motor signal
	3	OUT2	Vertical motor signal
	4	OUT3	Vertical motor signal
	5	OUT4	Vertical motor signal
J11	1	MIC_IN	Microphone signal input
	2	MIC_G	GND
J12	1	SPKN	Horn signal
	2	SPKP	Horn signal
J4	1	SD_DATA2	TF card data signal
	2	SD_DATA3	TF card data signal
	3	SD_CMD	TF card data signal
	4	3V3_SD	3.3V power supply
	5	SD_CLK	TF card clock signal
	6	GND	GND
	7	SD_DATA0	TF card data signal
	8	SD_DATA1	TF card data signal
	9	SD_CDTCT	TF card detection signal
K1	1	GND	GND
	2	KEY_SET	Key reset
J31 (Docking board interface)	1	OUT1	Horizontal motor signal
	2	OUT2	Horizontal motor signal
	3	OUT3	Horizontal motor signal
	4	OUT4	Horizontal motor signal

	5	GND	GND
	6	KEY_SET	Interface board reserved reset button
	7	GND	GND
	8	WIFI_PDN	WiFi signal detection port
	9	WIFI_DN	WiFi signal
	10	WIFI_DP	WiFi signal
	11	GND	GND
	12	TPTX -	Network port send signal negative
	13	TPTX+	Network port sending signal positive
	14	GND	GND
	15	TPRX+	Network port sending signal positive
	16	TPRX -	Network port send signal negative
	17	GND	GND
	18	1V8	1.8V
	19	+5V	5V
	20	+5V	5V

IPC-RM530-WIFI713G-4G-IF-MINI V2.02

Interface description



Socket	Specific No	Interface Description	Function
J32	1	+12V	12V
	2	GND	GND
J9	1	KEY_SET	Reset button of tail line belt
	2	+3.3V	3.3V
	3	ETHTX+	Network port sending signal positive
	4	ETHTX -	Network port send signal negative
	5	ETHRX+	Network port sending signal positive
	6	ETHRX -	Network port send signal negative
	7	GND	GND
	8	12V	12V
J33 (Reserved 4G module interface)	1	+5V_3V3	5V
	2	WIFI_DN	4G module signal
	3	WIFI_DP	4G module signal
	4	GND	GND

J1	1	+5V_M2	5V
	2	OUT1	Horizontal motor signal
	3	OUT2	Horizontal motor signal
	4	OUT3	Horizontal motor signal
	5	OUT4	Horizontal motor signal
J31(Docking motherboard)	1	OUT1	Horizontal motor signal
	2	OUT2	Horizontal motor signal
	3	OUT3	Horizontal motor signal
	4	OUT4	Horizontal motor signal
	5	GND	GND
	6	KEY_SET	Reset button of tail line belt
	7	GND	GND
	8	WIFI_PDN	WiFi signal detection port
	9	WIFI_DN	WiFi signal
	10	WIFI_DP	WiFi signal
	11	GND	GND
	12	TPTX -	Network port send signal negative
	13	TPTX+	Network port sending signal positive
	14	GND	GND
	15	TPRX+	Network port sending signal positive
16	TPRX -	Network port send signal negative	
17	GND	GND	
18	1V8	1.8V	
19	+5V	5V	
20	+5V	5V	

