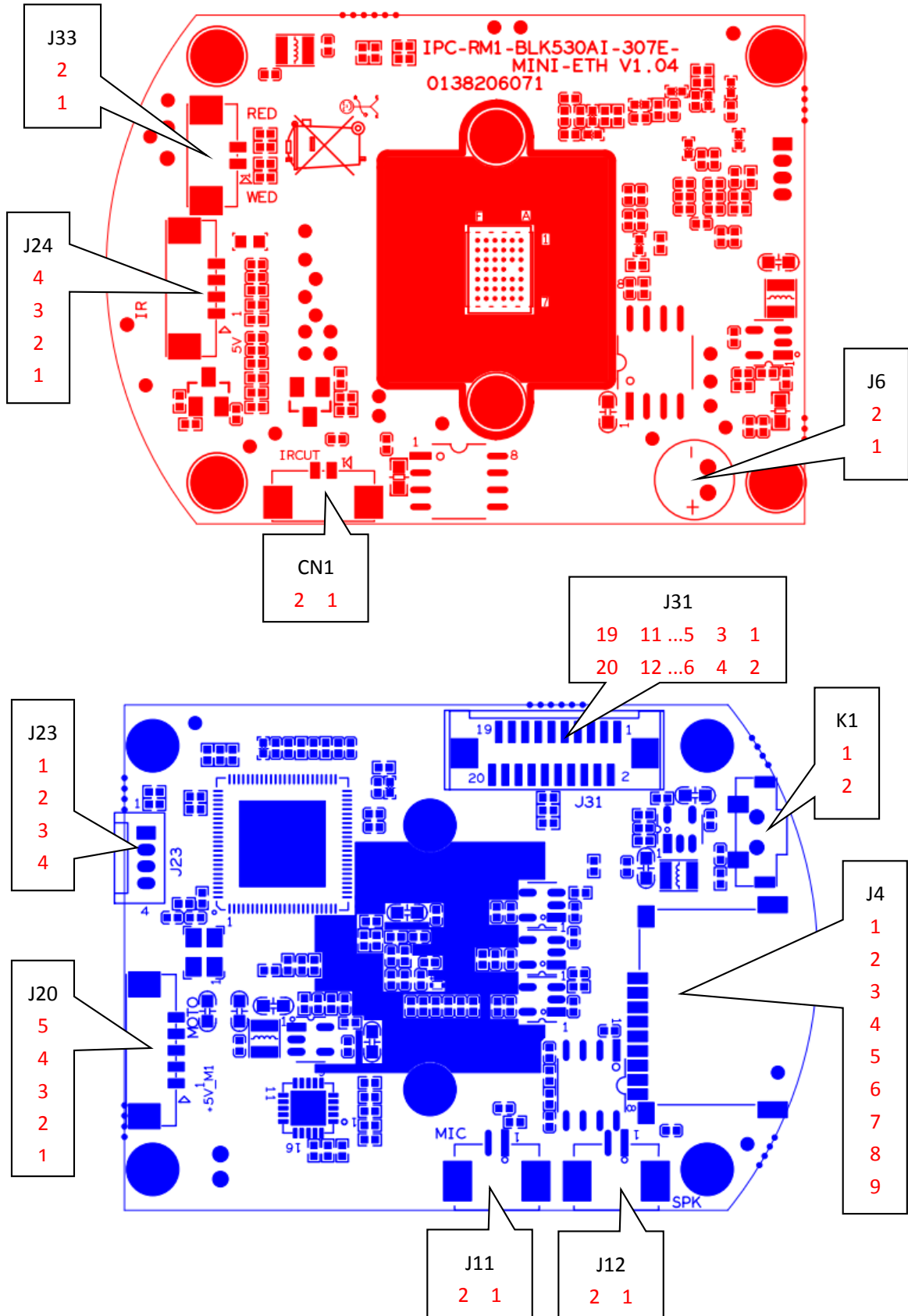


IPC-RM1-BLK530AI-307E-MINI-ETH-V1_04

Interface description

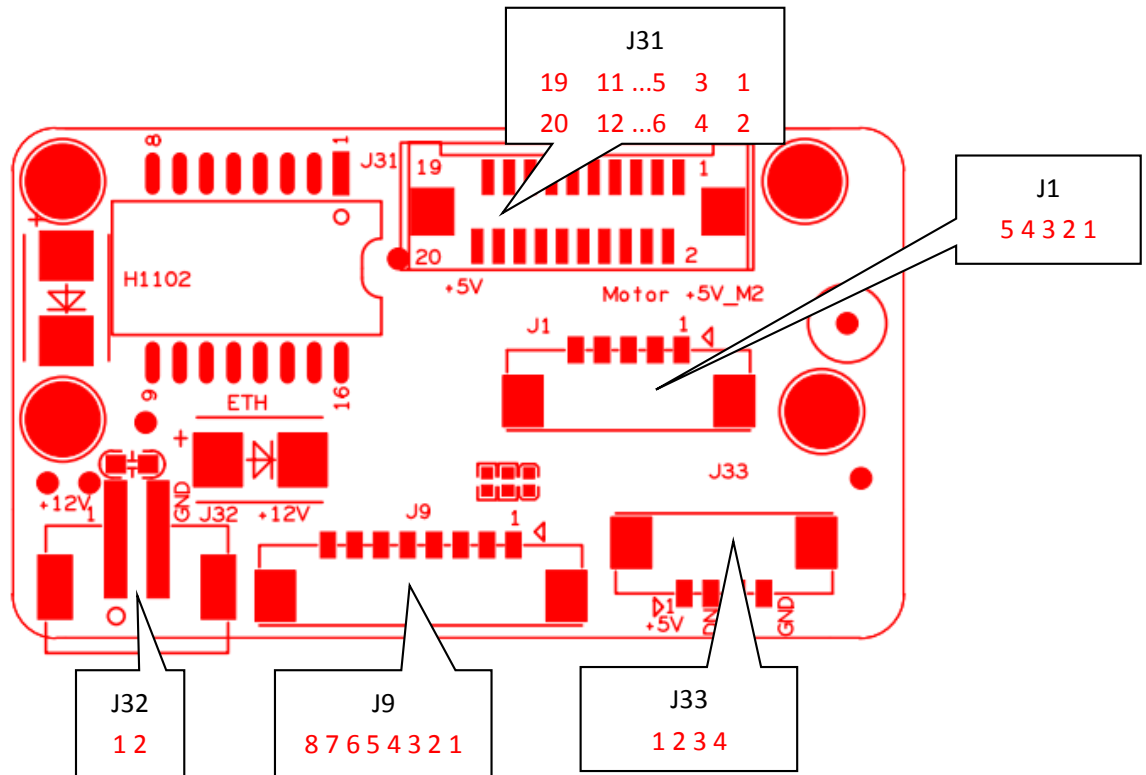


| Socket | Specific No | Interface Description | Function |
|---------------------------------|-------------|-----------------------|--|
| J33 | 1 | WED_GPIO041 | White light control port |
| | 2 | RED_GPIO039 | Infrared light control port |
| J24 | 1 | 5V | 5V |
| | 2 | GND | GND |
| | 3 | ADC1_IN | Photosensitive signal acquisition port |
| | 4 | GPIO091 | indicator light |
| CN1 | 1 | IRCUT_B | IRCUT signal 2 |
| | 2 | IRCUT_A | IRCUT signal 1 |
| J6(reserve) | 1 | MIC_IN | Microphone signal input |
| | 2 | MIC_G | GND |
| J23 | 1 | GND | GND |
| | 2 | UART0_TXD | Serial port sending |
| | 3 | UART0_RXD | Serial port receiving |
| | 4 | X | Empty |
| J20 | 1 | +5V_M1 | Horn signal |
| | 2 | OUT1 | Vertical motor signal |
| | 3 | OUT2 | Vertical motor signal |
| | 4 | OUT3 | Vertical motor signal |
| | 5 | OUT4 | Vertical motor signal |
| J11 | 1 | MIC_IN | Microphone signal input |
| | 2 | MIC_G | GND |
| J12 | 1 | SPKN | Horn signal |
| | 2 | SPKP | Horn signal |
| J4 | 1 | SD_DATA2 | TF card data signal |
| | 2 | SD_DATA3 | TF card data signal |
| | 3 | SD_CMD | TF card data signal |
| | 4 | 3V3_SD | 3.3V power supply |
| | 5 | SD_CLK | TF card clock signal |
| | 6 | GND | GND |
| | 7 | SD_DATA0 | TF card data signal |
| | 8 | SD_DATA1 | TF card data signal |
| | 9 | SD_CDTCT | TF card detection signal |
| K1 | 1 | GND | GND |
| | 2 | KEY_SET | Key reset |
| J31 (Docking board interface) | 1 | OUT1 | Horizontal motor signal |
| | 2 | OUT2 | Horizontal motor signal |
| | 3 | OUT3 | Horizontal motor signal |
| | 4 | OUT4 | Horizontal motor signal |

| | | | |
|--|----|----------|---------------------------------------|
| | 5 | GND | GND |
| | 6 | KEY_SET | Interface board reserved reset button |
| | 7 | GND | GND |
| | 8 | WIFI_PDN | WiFi signal detection port |
| | 9 | WIFI_DN | WiFi signal |
| | 10 | WIFI_DP | WiFi signal |
| | 11 | GND | GND |
| | 12 | TPTX - | Network port send signal negative |
| | 13 | TPTX+ | Network port sending signal positive |
| | 14 | GND | GND |
| | 15 | TPRX+ | Network port sending signal positive |
| | 16 | TPRX - | Network port send signal negative |
| | 17 | GND | GND |
| | 18 | 1V8 | 1.8V |
| | 19 | +5V | 5V |
| | 20 | +5V | 5V |

IPC-RM530-WIFI713G-4G-IF-MINI V2.02

Interface description



| Socket | Specific No | Interface Description | Function |
|---|-------------|-----------------------|--------------------------------------|
| J32 | 1 | +12V | 12V |
| | 2 | GND | GND |
| J9 | 1 | KEY_SET | Reset button of tail line belt |
| | 2 | +3.3V | 3.3V |
| | 3 | ETHTX+ | Network port sending signal positive |
| | 4 | ETHTX - | Network port send signal negative |
| | 5 | ETHRX+ | Network port sending signal positive |
| | 6 | ETHRX - | Network port send signal negative |
| | 7 | GND | GND |
| | 8 | 12V | 12V |
| J33 (Reserved 4G module interface) | 1 | +5V_3V3 | 5V |
| | 2 | WIFI_DN | 4G module signal |
| | 3 | WIFI_DP | 4G module signal |
| | 4 | GND | GND |

| | | | |
|----------------------------------|--------|-----------------------------------|---|
| J1 | 1 | +5V_M2 | 5V |
| | 2 | OUT1 | Horizontal motor signal |
| | 3 | OUT2 | Horizontal motor signal |
| | 4 | OUT3 | Horizontal motor signal |
| | 5 | OUT4 | Horizontal motor signal |
| J31(Docking motherboard) | 1 | OUT1 | Horizontal motor signal |
| | 2 | OUT2 | Horizontal motor signal |
| | 3 | OUT3 | Horizontal motor signal |
| | 4 | OUT4 | Horizontal motor signal |
| | 5 | GND | GND |
| | 6 | KEY_SET | Reset button of tail line belt |
| | 7 | GND | GND |
| | 8 | WIFI_PDN | WiFi signal detection port |
| | 9 | WIFI_DN | WiFi signal |
| | 10 | WIFI_DP | WiFi signal |
| | 11 | GND | GND |
| | 12 | TPTX - | Network port send signal negative |
| | 13 | TPTX+ | Network port sending signal positive |
| | 14 | GND | GND |
| | 15 | TPRX+ | Network port sending signal positive |
| 16 | TPRX - | Network port send signal negative | |
| 17 | GND | GND | |
| 18 | 1V8 | 1.8V | |
| 19 | +5V | 5V | |
| 20 | +5V | 5V | |

