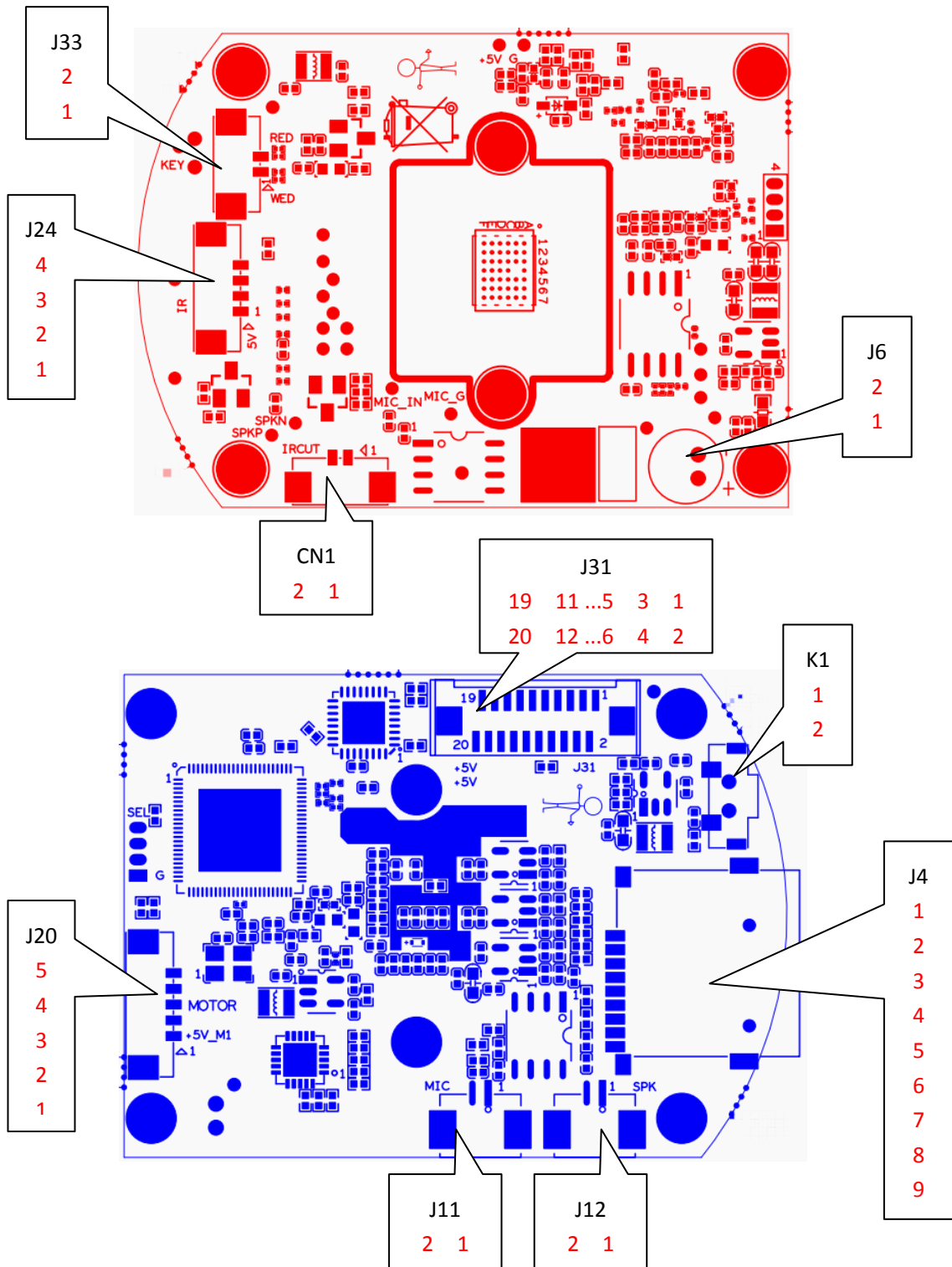


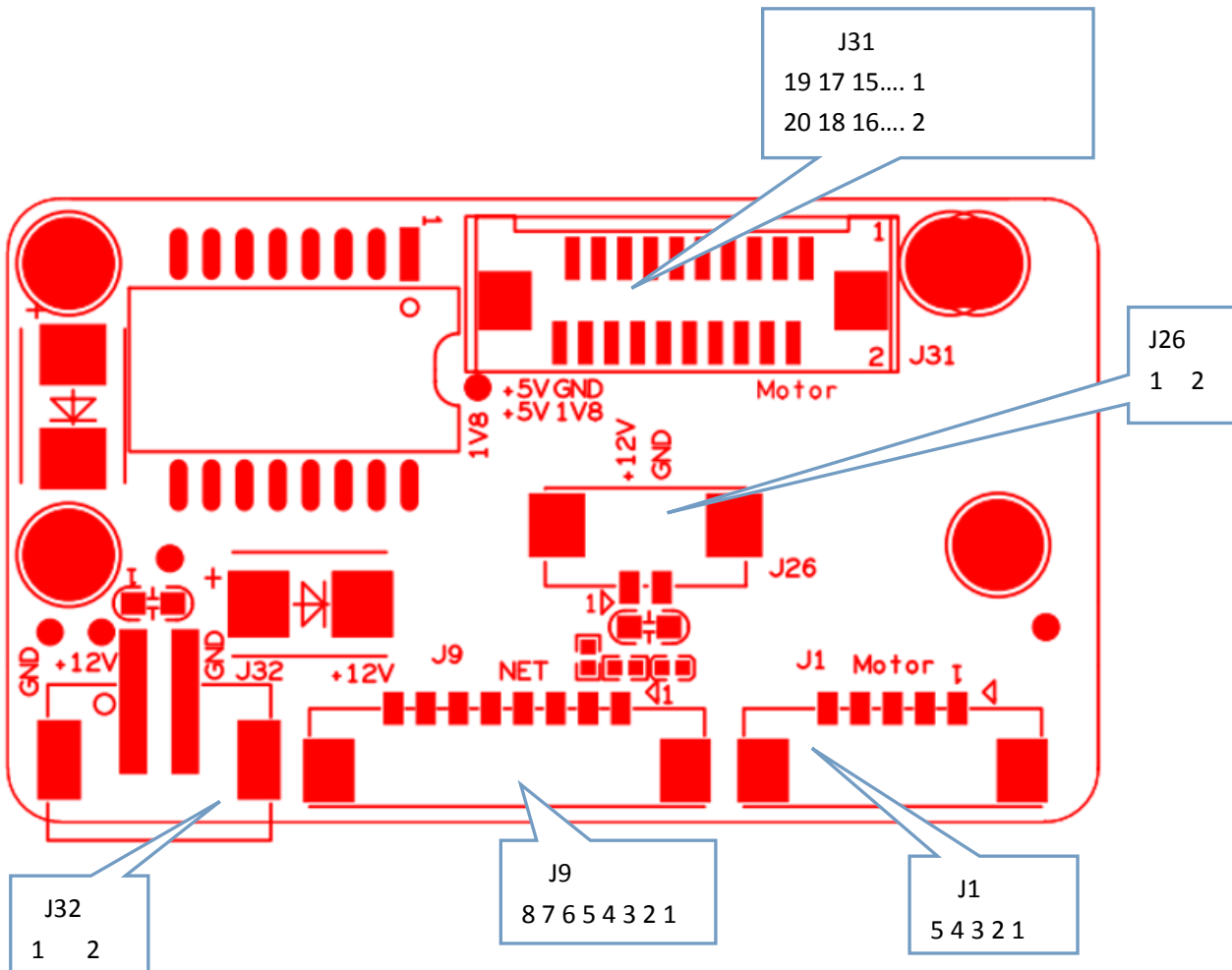
IPG-X4-WQ

Interface description



Socket	Specific No	Interface Description	Function
J33	1	WED	White light control
	2	RED	Red light control
J24	1	5V	5V
	2	GND	GND
	3	ADC1_IN	Photosensitive signal acquisition port
	4	LED	indicator light
CN1	1	IRCUT_B	IRCUT signal 2
	2	IRCUT_A	IRCUT signal 1
J6 (reserve)	1	MIC_IN	Microphone signal input
	2	MIC_G	GND
J20	1	+5V_M1	5V
	2	OUT1	Vertical motor signal
	3	OUT2	Vertical motor signal
	4	OUT3	Vertical motor signal
	5	OUT4	Vertical motor signal
J11	1	MIC_IN	Microphone signal input
	2	MIC_G	GND
J12	1	SPKN	Horn signal
	2	SPKP	Horn signal
J4	1	SD_DATA2	SD card data data2
	2	SD_DATA3	SD card data data3
	3	SD_CMD	command
	4	3V3_SD	SD card power supply 3.3V
	5	SD_CLK	SD card clock
	6	GND	GND
	7	SD_DATA0	SD card data DATA0
	8	SD_DATA1	SD card data DATA1
	9	SD_CDTCT	SD card detection
K1	1	GND	GND
	2	KEY_SET	Press the key to reset
J31 (Docking interface board)	1	OUT1	Horizontal motor signal
	2	OUT2	Horizontal motor signal
	3	OUT3	Horizontal motor signal
	4	OUT4	Horizontal motor signal
	5	GND	GND
	6	KEY_SET	Reset button
	7	GND	GND
	8	WIFI_PDN	WIF IPower control signal
	9	WIFI_DN	WiFi signal negative

10	WIFI_DP	WiFi signal positive
11	GND	GND
12	TPTX -	Network data transmission -
13	TPTX+	Network data transmission +
14	GND	GND
15	TPRX+	Network data transmission +
16	TPRX -	Network data transmission -
17	GND	GND
18	NC	NC
19	+5V	5V power output
20	+5V	5V power output



Socket	Specific No	Interface Description	Function
J31	1	OUT1	Motor signal
	2	OUT2	Motor signal
	3	OUT3	Motor signal
	4	OUT4	Motor signal
	5	GND	GND
	6	KEY_SET	Reset button
	7	GND	GND
	8	WIFI_PDN	WiFi power control signal
	9	WIFI_DN	USB negative
	10	WIFI_DP	USB positive
	11	GND	GND
	12	TPTX-	Network port transmission
	13	TPTX+	Network port transmission
	14	GND	GND
	15	TPRX+	Network port receiving signal
	16	TPRX-	Network port receiving signal
	17	GND	GND
	18	1V8	1V8 Power Supply
	19	+5V	5V Power Supply
	20	+5V	5V Power Supply
J1	1	+5V	5V Power Supply
	2	OUT1	Horizontal motor signal
	3	OUT2	Horizontal motor signal
	4	OUT3	Horizontal motor signal
	5	OUT4	Horizontal motor signal
J9	1	KEY_SET	Reset button
	2	Led	Network port light signal
	3	ETHTX+	Network transformer transmission signal line
	4	ETHTX-	Network transformer transmission signal line
	5	ETHRX+	Network transformer receiving signal line
	6	ETHRX-	Network transformer receiving signal line

	7	GND	GND
	8	12V	12V Power Supply
J32	1	12V	12V Power Supply
	2	GND	GND
J26	1	12V	12V Power Supply
	2	GND	GND