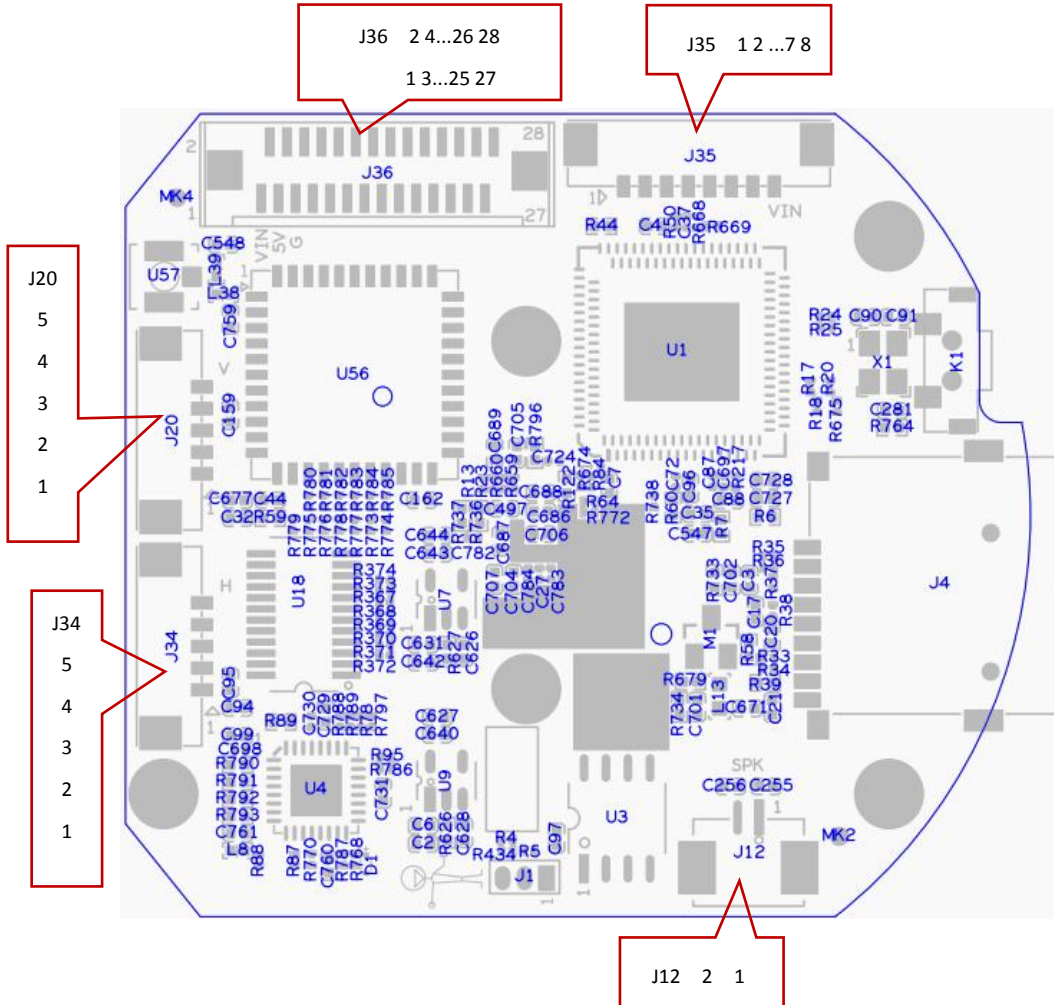
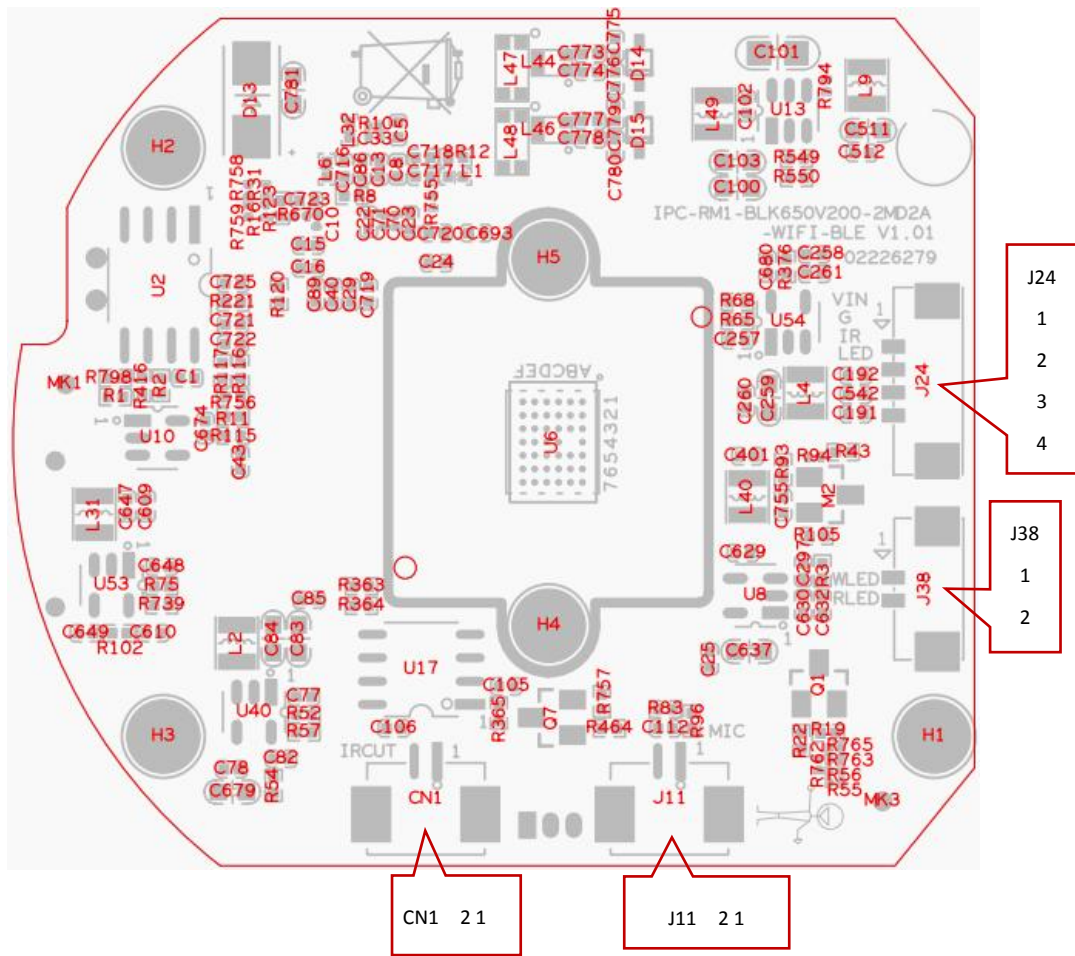


IPG-X4-WEQ

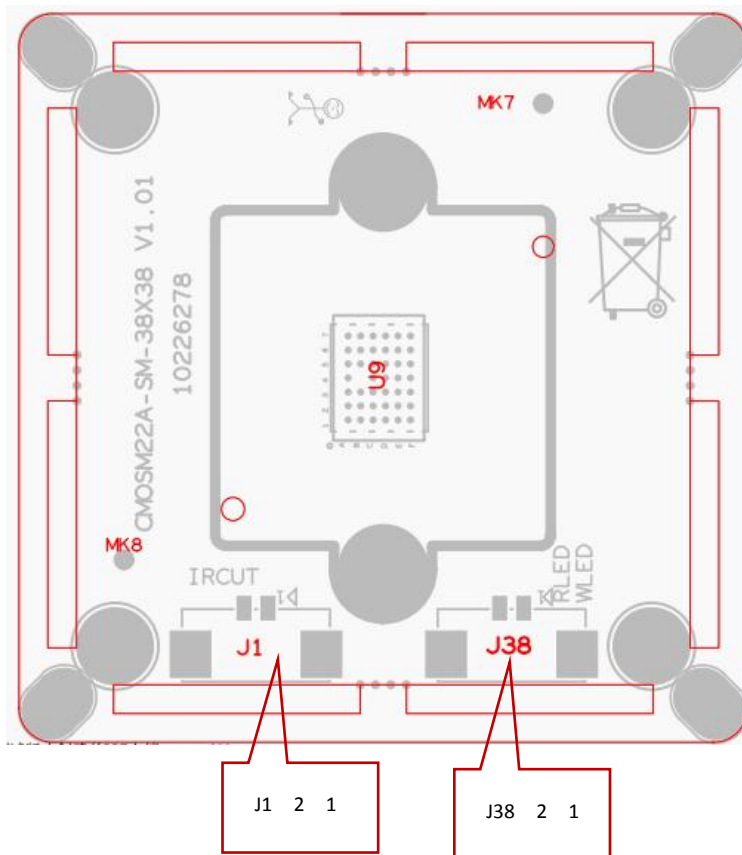
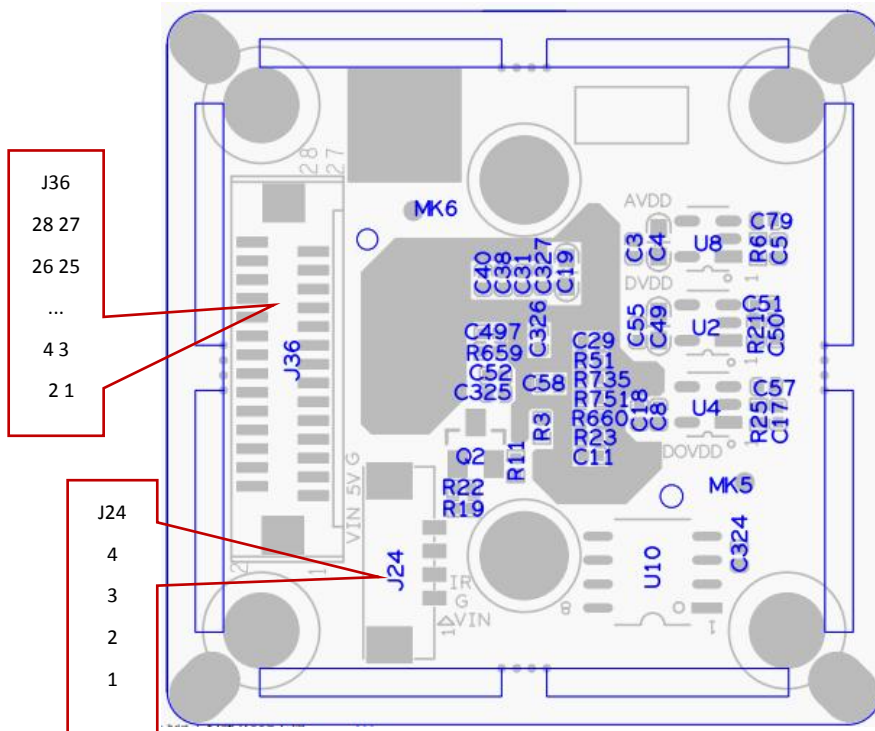
Interface description





Socket	Specific No	Interface Description	Function
J36	1	VCC_IN	12V Power Supply
	2		
	3	5V	5V Power Supply
	4		
	5	GND	GND
	6		
	7	IR	Hard photosensitive input signal
	8	RLED	Infrared lamp control signal
	9	WLED	White light control signal
	10	GND	GND
	11	IRCUTA	IRCUT drive
	12	IRCUTB	
	13	GND	GND
	14	SCL	IIC signal
	15	SDA	
	16	RST	Sensor reset

	17	GND	GND
	18	SEN0_MCLK	SENSOR Correlation signal
	19	GND	
	20	SEN_CLK0N	
	21	SEN_CLK0P	
	22	GND	
	23	SEN_D0N	
	24	SEN_D0P	
	25	GND	
	26	SEN_D1N	
	27	SEN_D1P	
	28	GND	
J20	1	5V	
	2	OUT8	
	3	OUT7	
	4	OUT6	
	5	OUT5	
J34	1	5V	Horizontal motor interface
	2	OUT1	
	3	OUT2	
	4	OUT3	
	5	OUT4	
J12	1	SPKN	SPK
	2	SPKP	
J35	1	LINK/KEY_SET	Network interface indicator/reset button
	2	ACT	Wired network
	3	ETHTX+	
	4	ETHTX-	
	5	ETHRX+	
	6	ETHRX-	
	7	GND	GND
	8	VCC_IN	12V Power Supply
J11	1	MIC_G	MIC
	2	MIC_IN	
CN1	1	OUT1	IRCUT
	2	OUT2	
J24	1	VCC_IN	12V Power Supply
	2	GND	GND
	3	IR	Hard photosensitive input signal
	4	LED	indicator light
J38	1	WLED	White light control signal
	2	RLED	Infrared lamp control signal



Socket	Specific No	Interface Description	Function
J36	1	VCC_IN	12V Power Supply
	2		
	3	5V	5V Power Supply
	4		
	5	GND	GND
	6		
	7	IR	Hard photosensitive input signal
	8	RLED	Infrared lamp control signal
	9	WLED	White light control signal
	10	GND	GND
	11	IRCUTA	IRCUT drive
	12	IRCUTB	
	13	GND	GND
	14	SCL	IIC signal
	15	SDA	
	16	RST	Sensor reset
	17	GND	GND
	18	SEN0_MCLK	SENSOR Correlation signal
	19	GND	
	20	SEN_CLK0N	
	21	SEN_CLK0P	
	22	GND	
	23	SEN_D0N	
	24	SEN_D0P	
	25	GND	
	26	SEN_D1N	
	27	SEN_D1P	
	28	GND	
J24	1	VCC_IN	12V Power Supply
	2	GND	GND
	3	IR	Hard photosensitive input signal
	-	-	-
J38	1	WLED	White light control signal
	2	RLED	Infrared lamp control signal
J1	1	OUT1	IRCUT
	2	OUT1	