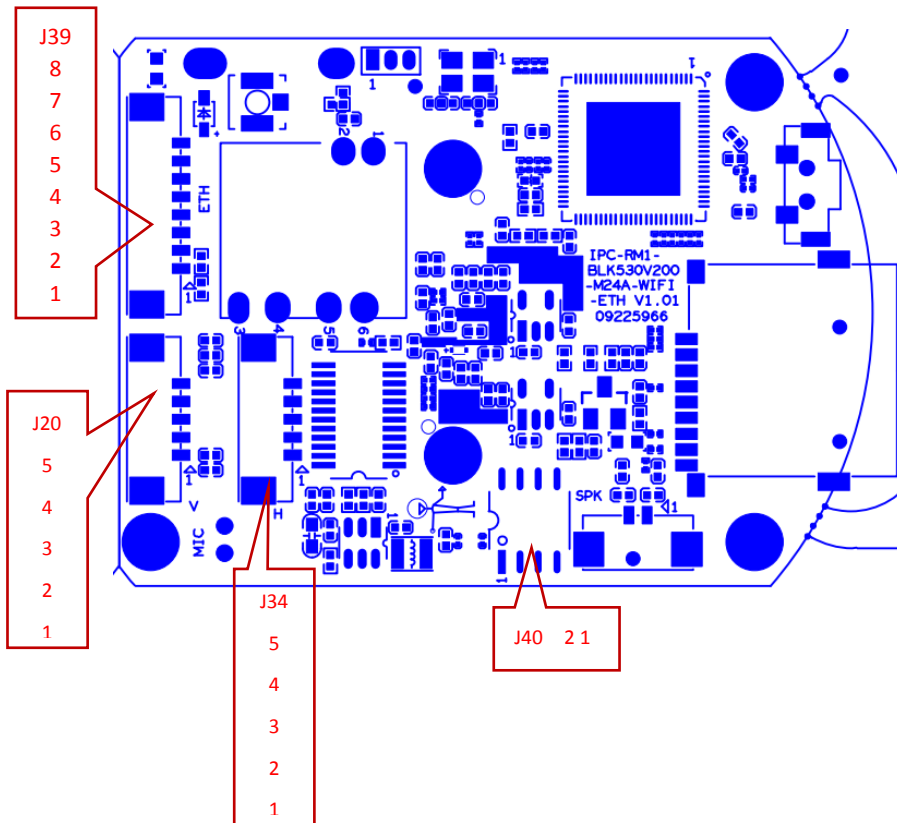
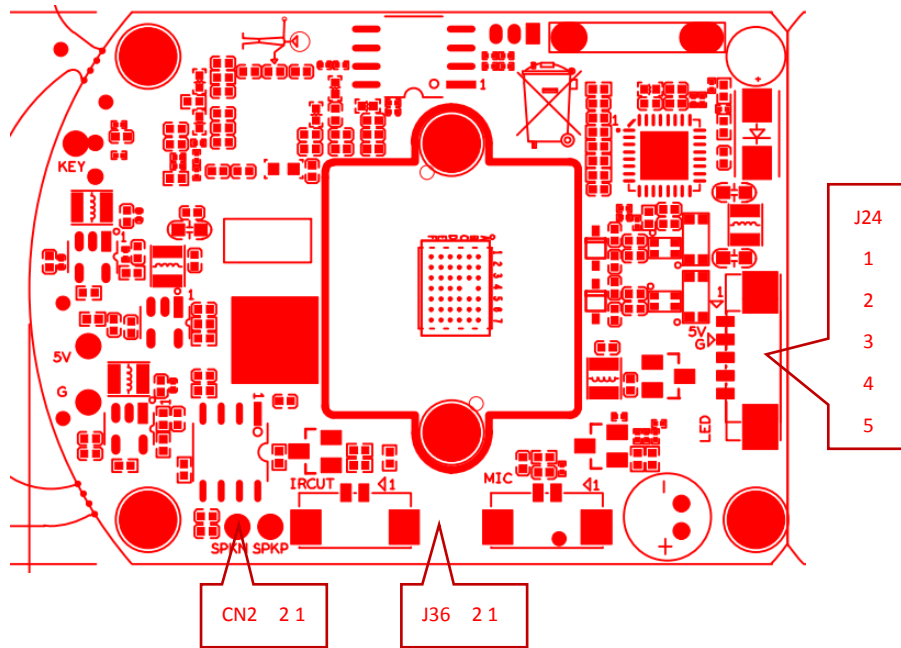


IPG-X2-WQ

Interface description



| Socket | Specific No | Interface Description | Function |
|--------|-------------|-----------------------|----------------------------------|
| CN2 | 1 | IR-CUT | IR-CUT drive |
| | 2 | IR-CUT | IR-CUT drive |
| J36 | 1 | MIC_N | Microphone signal |
| | 2 | MIC_P | Microphone signal |
| J24 | 1 | 5V | 5V power supply |
| | 2 | GND | GND |
| | 3 | IRIN_GPIO7_1 | Hard photosensitive input signal |
| | 4 | RLED/GPIO2_0 | Infrared lamp control signal |
| | 5 | WLED/GPIO0_4 | White light control signal |
| J39 | 1 | ETH_LINK_ACT_LED | Network light |
| | 2 | ETH_LINK_STA_LED | Network light |
| | 3 | ETHTX+ | Network interface data |
| | 4 | ETHTX- | Network interface data |
| | 5 | ETHRX+ | Network interface data receiving |
| | 6 | ETHRX- | Network interface data receiving |
| | 7 | GND | GND |
| | 8 | +12V_IN | 12V power supply |
| J20 | 1 | 5V | 5V power supply |
| | 2 | OUT1 | Motor drive signal |
| | 3 | OUT2 | Motor drive signal |
| | 4 | OUT3 | Motor drive signal |
| | 5 | OUT4 | Motor drive signal |
| J34 | 1 | 5V | 5V power supply |
| | 2 | OUT1 | Motor drive signal |
| | 3 | OUT2 | Motor drive signal |
| | 4 | OUT3 | Motor drive signal |
| | 5 | OUT4 | Motor drive signal |
| | 1 | SPKN | Horn signal |
| | 2 | SPKP | Horn signal |