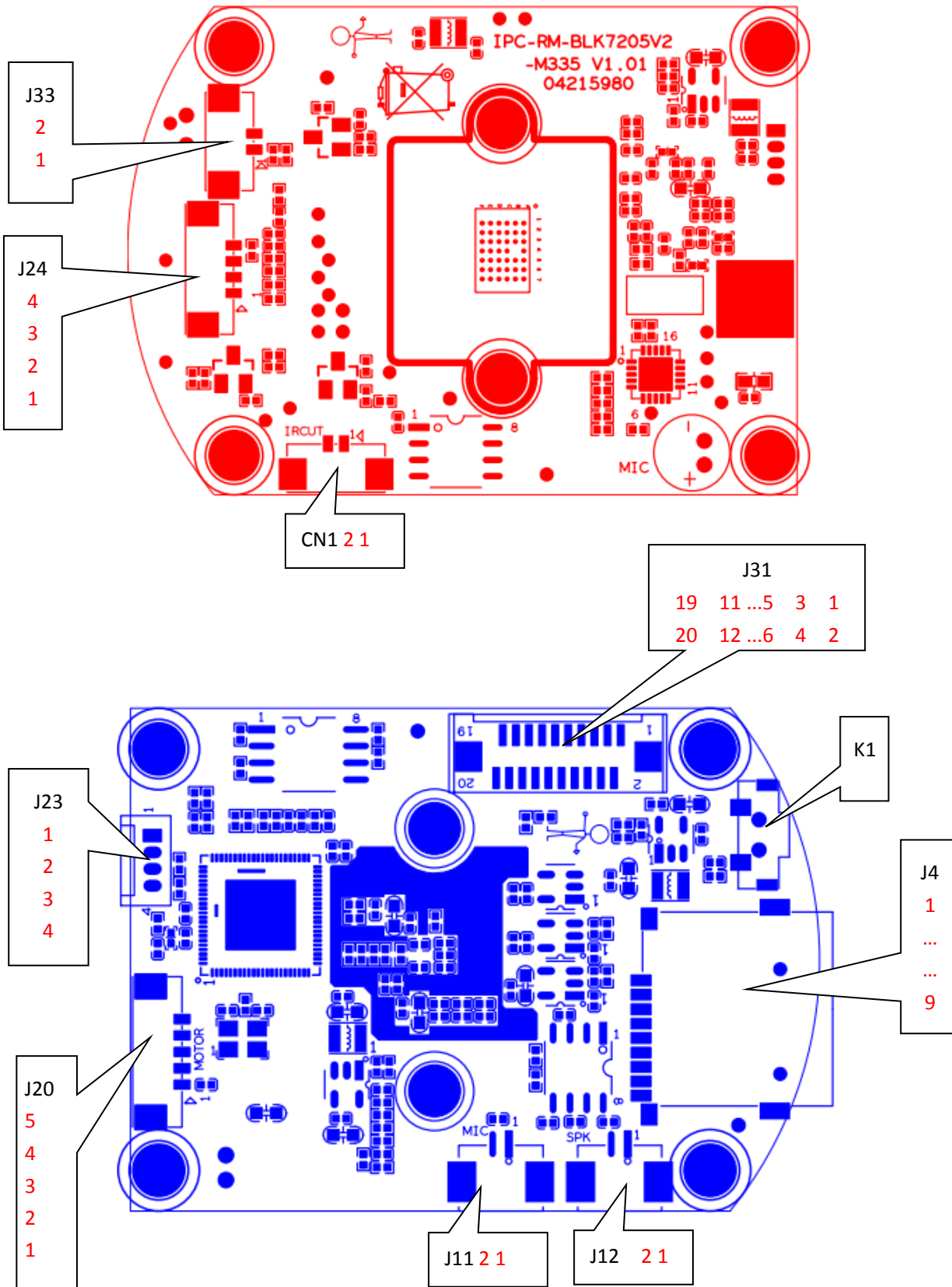


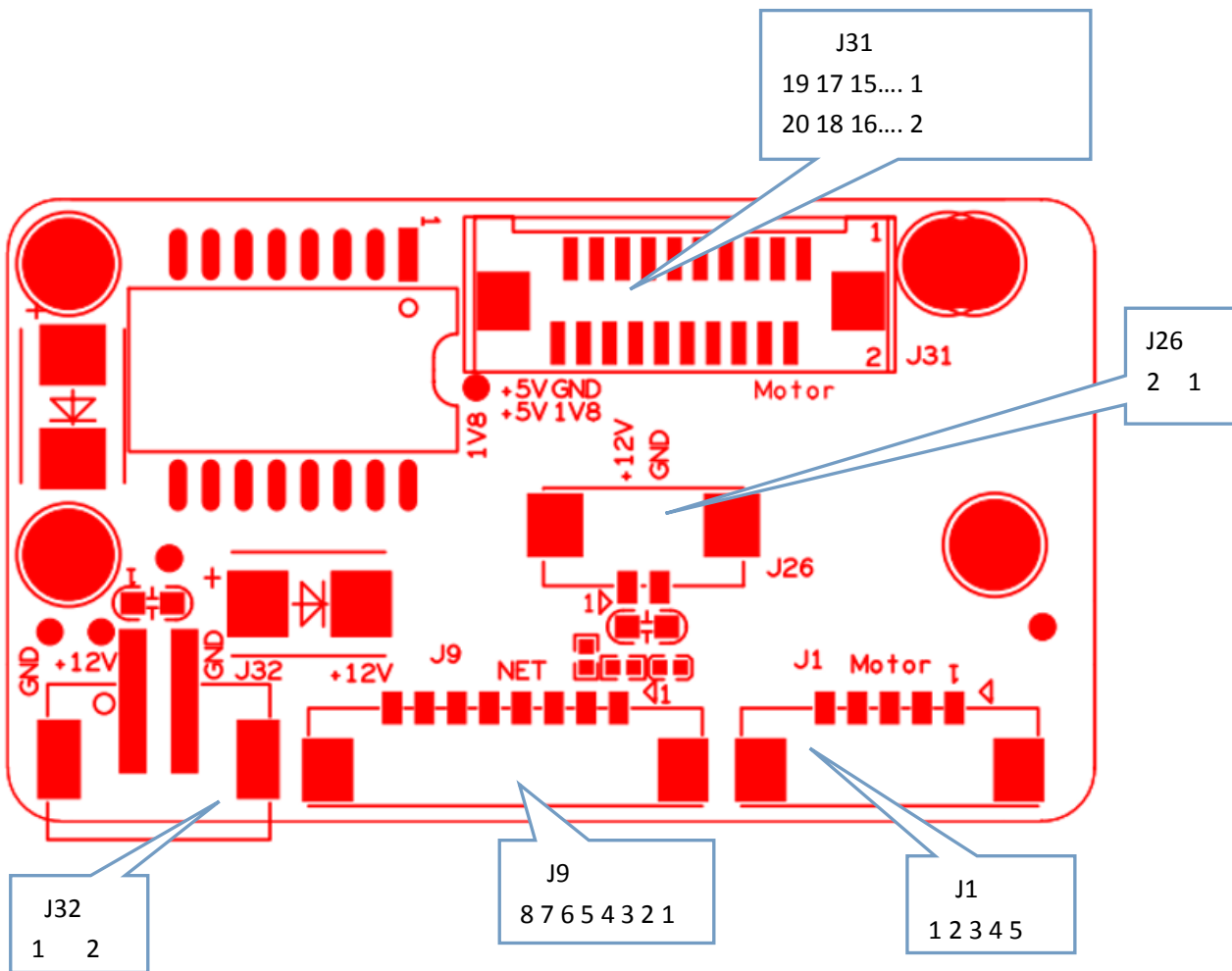
IPG-G3-WQ

Interface description



Socket	Specific No	Interface Description	Function	
J20	1	+5V_M1	Vertical motor power signal	Connected to vertical motor
	2	OUT1	Vertical motor signal	
	3	OUT2	Vertical motor signal	
	4	OUT3	Vertical motor signal	
	5	OUT4	Vertical motor signal	
J11	1	AC_IN	Microphone signal input	Connect the microphone
	2	GND	GND	
J23	1	GND	GND	Serial port debugging seat
	2	UART0_TXD	UART	
	3	UART0_RXD	UART	
	4	NC	NC	
J31	1	OUT1	Horizontal motor signal	Interface board
	2	OU2	Horizontal motor signal	
	3	OU3	Horizontal motor signal	
	4	OU4	Horizontal motor signal	
	5	GND	GND	
	6	KEY_SET	Reset button	
	7	GND	GND	
	8	WIFI_PDN	WIF IPower control signal	
	9	WIFI_DN	WiFi signal negative	
	10	WIFI_DP	WiFi signal positive	
	11	GND	GND	
	12	TPTX-	Network data transmission -	
	13	TPTX+	Network data transmission +	
	14	GND	GND	
	15	TPRX+	Network data transmission +	
	16	TPRX-	Network data transmission -	
	17	GND	GND	
	18	NC	NC	
	19	+5V	5V power output	
	20	+5V	5V power output	
J4	1	SD_DATA2	SD card data data2	Connected to SD card
	2	SD_DATA3	SD card data data3	
	3	SD_CMD	command	
	4	3V3_SD	SD card power supply 3.3V	
	5	SD_CLK	SD card clock	
	6	GND	GND	
	7	SD_DATA0	SD card data DATA0	
	8	SD_DATA1	SD card data DATA1	

	9	SD_CDTCT	SD card detection	
J24	1	5V	5V	Light receiving board
	2	GND	GND	
	3	IRIN_GPIO1_7	Photosensitive signal acquisition port	
	4	LED_GPIO1_6	indicator light	
J33	1	WLED/GPIO0_4	White light control	Connected to IRCUT
	2	RLED/GPIO2_0	Red light control	
CN1	1	IRCUTB	IR_CUT wiring B	Connect horn
	2	IRCUTA	IR_CUT wiring B	
J12	1	SPKN	Horn signal -	Connect horn
	2	SPKP	Horn signal +	



Socket	Specific No	Interface Description	Function
J31	1	OUT1	Motor signal
	2	OUT2	Motor signal
	3	OUT3	Motor signal
	4	OUT4	Motor signal
	5	GND	GND
	6	KEY_SET	Reset button
	7	GND	GND
	8	WIFI_PDN	WiFi power control signal
	9	WIFI_DN	USB negative
	10	WIFI_DP	USB positive
	11	GND	GND
	12	TPTX-	Network port transmission
	13	TPTX+	Network port transmission
	14	GND	GND
	15	TPRX+	Network port receiving signal
	16	TPRX-	Network port receiving signal
	17	GND	GND
	18	1V8	1V8 Power Supply
	19	+5V	5V Power Supply
	20	+5V	5V Power Supply
J1	1	+5V	5V Power Supply
	2	OUT1	Horizontal motor signal
	3	OUT2	Horizontal motor signal
	4	OUT3	Horizontal motor signal
	5	OUT4	Horizontal motor signal
J9	1	KEY_SET	Reset button
	2	Led	Network port light signal
	3	ETHTX+	Network transformer transmission signal line
	4	ETHTX-	Network transformer transmission signal line
	5	ETHRX+	Network transformer receiving signal line
	6	ETHRX-	Network transformer receiving signal line

	7	GND	GND
	8	12V	12V Power Supply
J32	1	12V	12V Power Supply
	2	GND	GND
J26	1	12V	12V Power Supply
	2	GND	GND