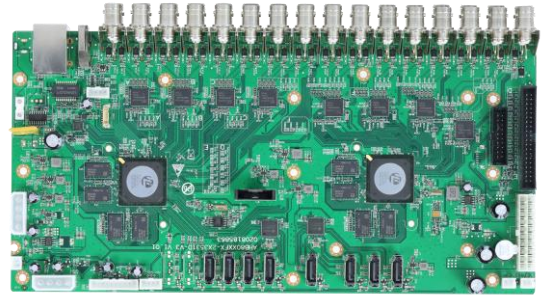




## AHB8032F8-GS



### Feature:

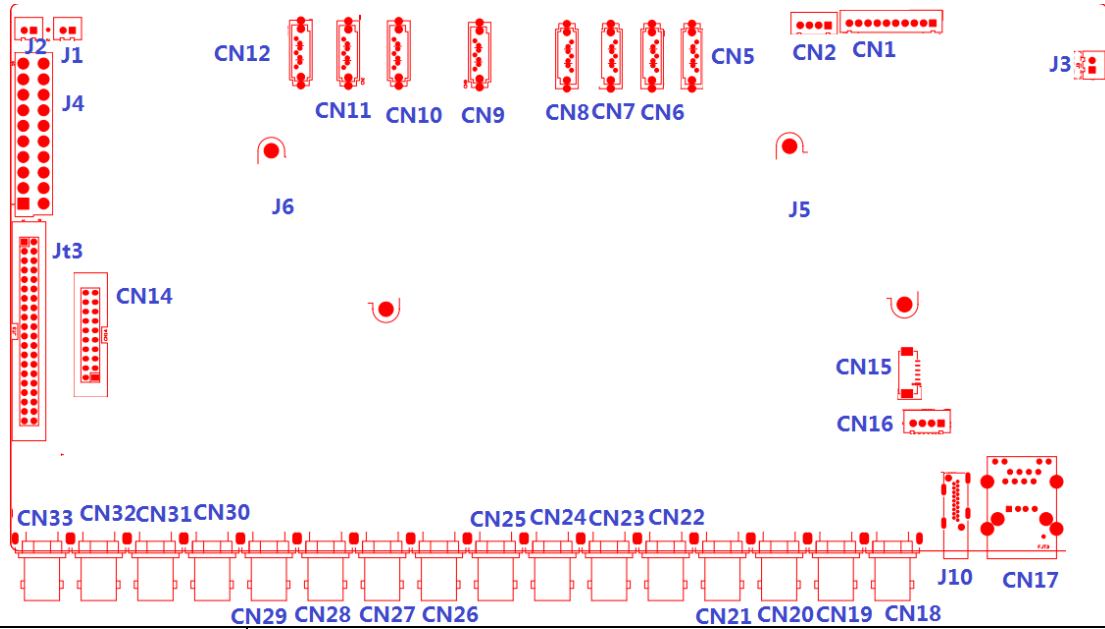
- Support H.265+ encoding, ultra-low bitrates, compatible with H.264 surroundings;
- Support VGA, HDMI full HD output simultaneously;
- Support ONVIF; access third party;
- Support multiple cloud technology, network penetration, alarm information pushed to your phone and other functions;
- Support web, CMS, center platform management software MYEYE, provide SDK development;
- Support various mobile monitoring (iPhone, Android);
- Remote Access, With DNS (ARSP), easy to monitor remotely
- Support UTC, control signal & video stream transmit through one single coaxial
- Support XVI/AHD/TVI/CVI/CVBS/IP six signals;

### Specification:

	Model	AHB8032F8-GS
System	Main processor	HI3531D*2
Interface	Preview	1/4/8/9/16/32
Video	Codec	H.265+
	Monitor quality	VGA(1080P at most);HDMI(4K at most)
	Preview ability	32*4K-N@15fps(6 in 1); 32*5M@12fps(6 in 1); 32*4M@15fps(6 in 1); 32*3M@18fps (6 in 1); 32*1080P(6 in 1);
	Encode ability	32*4K-N@7fps(6 in 1); 32*5M@6fps(6 in 1); 32*4M@8fps(6 in 1); 32*3M@10fps (6 in 1); 32*1080P@15fps(6 in 1);
	Decode ability	8*4K-N@7fps(6 in 1); 8*5M@6fps(6 in 1); 16*4M@8fps(6 in 1); 16*3M@10fps (6 in 1); 16*1080P@15fps(6 in 1)
	Multi-mode input	Analog: 32*5M; 32*4M; Digital to analog conversion: support network: 32*1080P; 16*3M; 8*5M
	Motion Detection	Each screen can be set to 192 (16 * 12) detection areas; multi-level sensitivity can be set (Limited local channel)
Audio	Audio compression	G.711A
	Intercom	support
Record & playback	Record mode	manual>alarm>motion detection>timing
	Local Playback	8/16ch(analog input mode)
	Search mode	Search by time, calendar, event, channel
Storage & backup	Video storage	HDD, network
	Backup mode	Network, USB hard disk, USB burner, SATA burner
External Interface	Video input	32ch BNC
	Video output	1ch VGA, 1ch HDMI
	Loop Vout	N/A
	Audio I/O	0(Can be extended to16ch)/0(Can be extended to1ch)
	Alarm I/O	0(Can be extended to16ch)/0(Can be extended to4ch)
	Network interface	RJ45 10M/100M/1000M self-adaption
	PTZ control	Can be extended to 1*RS485, 1*RS232,Support kinds of PTZ protocols
	USB	2* USB 2.0 ports



	HDD	8*SATA ports (Max 8TB/per)
	Wireless	3G WIFI (extend via USB)
General	Power supply	ATX
	Power Consumption	<15W (without HDD)
	Working environment	Temperature:0℃—+55℃, Humidity:10%—90%, Atm:86kpa—106kpa
	Dimension	294mm*147mm
	Weight	470g



代号	功能描述	接口定义			
CN14	音频+报警扩展座子	1: AUDIO_OUT_MAIN	2: +5V	3: GND	4: +5V
		5: AUDIO1	6: +5V	7: AUDIO4	8: AUDIO5
		9: GND	10: GND	11: AUDIO2	12: AUDIO3
		13: AUDIO8	14: AUDIO7	15: AUDIO6	16: ALARM_IN1
		17: ALARM_IN4	18: ALARM_IN2	19: ALOUT1	20: ALARM_IN3
JT3	40PIN 组合扩展座子	1: VIDEO_OUT_MAIN	2: AUDIO16	3: AUDIO15	4: GND
		5: AUDIO11	6: AUDIO12	7: GND	8: AUDIO10
		9: AUDIO9	10: GND	11: AUDIO14	12: AUDIO13
		13: GND	14: ALOUT4	15: ALOUT2	16: GND
		17: ALOUT3	18: ALARM_IN16	19: GND	20: RS232_R
		21: RS232_T	22: GND	23: RS485_B	24: RS485_A
		25: GND	26: ALARM_IN10	27: ALARM_IN9	28: ALARM_IN11
		29: ALARM_IN8	30: ALARM_IN12	31: GND	32: GND
		33: ALARM_IN5	34: ALARM_IN13	35: ALARM_IN6	36: ALARM_IN14
		37: ALARM_IN7	38: ALARM_IN15	39: GND	40: GND
J4	ATX 电源	1: +3.3V	2: +3.3V	3: GND	4: +5V
		5: GND	6: +5V	7: GND	8: NC
		9: +5_STB	10: +12V	11: +3.3	12: NC
		13: GND	14: PWR_S	15: GND	16: GND
		17: GND	18: NC	19: +5V	20: +5V



J1	风扇电源座子	1:+12V	2:GND		
J2	风扇电源座子	1:+12V	2:GND		
CN12	SATA 接口				
CN11	SATA 接口				
CN10	SATA 接口				
CN9	SATA 接口				
CN2	USB 扩展座子				
CN1	10PIN 带单片机前面板扩展座子	1:+5V	2: GND	3:+5_STB	4:GND
		5:NC	6:NC	7: URXD3	8: UTXD3
		9: PWR_S	10:GND		
J3	风扇电源座子	1:+12V	2:GND		
CN17	USB+单网口组合接口				
J10	侧插式 HDMI 接口				
CN16	USB 扩展座子				
CN13	VGA 扩展座子				
CN18	BNC 视频输入接口	上:VIDE031	下: VIDE032		
CN19	BNC 视频输入接口	上:VIDE029	下: VIDE030		
CN20	BNC 视频输入接口	上:VIDE027	下: VIDE028		
CN21	BNC 视频输入接口	上:VIDE025	下: VIDE026		
CN22	BNC 视频输入接口	上:VIDE023	下: VIDE024		
CN23	BNC 视频输入接口	上:VIDE021	下: VIDE022		
CN24	BNC 视频输入接口	上:VIDE019	下: VIDE020		
CN25	BNC 视频输入接口	上:VIDE017	下: VIDE018		
CN26	BNC 视频输入接口	上:VIDE015	下: VIDE016		
CN27	BNC 视频输入接口	上:VIDE013	下: VIDE014		
CN28	BNC 视频输入接口	上:VIDE011	下: VIDE012		
CN29	BNC 视频输入接口	上:VIDE09	下: VIDE010		
CN30	BNC 视频输入接口	上:VIDE07	下: VIDE08		
CN31	BNC 视频输入接口	上:VIDE05	下: VIDE06		
CN32	BNC 视频输入接口	上:VIDE03	下: VIDE04		
CN33	BNC 视频输入接口	上:VIDE01	下: VIDE02		
J5	散热片				
J6	散热片				